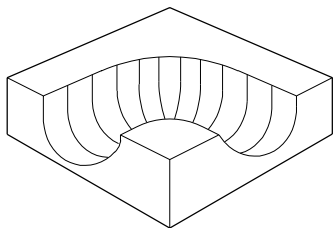
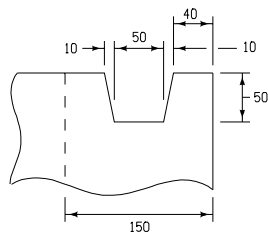


TYPICAL SECTION A-A

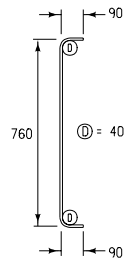
SHOWING THE DESIRED LOCATION OF INLET AND OUTLET



PERSPECTIVE VIEW OF CONCRETE FILLET

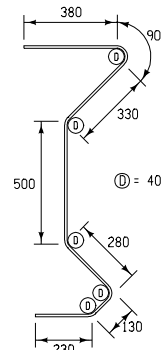


KEYED CONSTRUCTION JOINT DETAIL



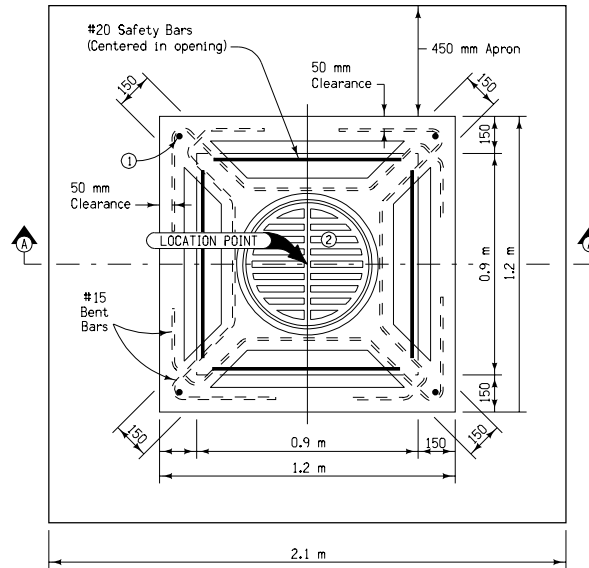
DETAIL OF SAFETY BARS FOR INTAKE TOP

Length of Bar = 0.94 m (4 bars required)



DETAIL OF REINFORCING BARS FOR INTAKE TOP

Length of Bar = 1.94 m (4 bars required)



PLAN

GENERAL NOTES:

Vibration of concrete is required.

A concrete fillet shall be placed in the bottom of the intake approximately as indicated. Special shaping of this fillet is required to provide a smooth channel through the intake. Top surface of the fillet shall slope at a rate of approximately 12:1 (Horizontal: Vertical) toward the channel.

Top unit of intake may be poured in field or precast. Alignment holes shall be 25 millimeters diameter and 75 millimeters deep (placed 75 millimeters from each side at corners of unit) if precast.

Price bid for "Intake, RA-62" shall include all necessary excavation, backfill, and satisfactory connections to new or existing storm sewer, as well as furnishing all materials and constructing intake as shown hereon.

- ① #20 x 230 millimeter alignment pins (4 bars required). Alignment pins required only when top is precast.
- ② Standard Road Plan RA-66C Type 9 cast iron frame and grate.
- ③ #15 Reinforcing bars (1100 mm long) spaced at 240 mm centers both ways (8 bars required)

All dimensions given in millimeters unless noted.

METRIC VERSION	M Iowa Department of Transportation Highway Division	
	STANDARD ROAD PLAN RA-62	
	REVISION: Require Concrete Fillet.	REVISION NO. 2
	APPROVED BY <i>William J. Steen</i> DESIGN METHODS ENGINEER	REVISION DATE 04-15-03
OPEN DITCH INTAKE (VERTICAL THROAT AND GRATE)		