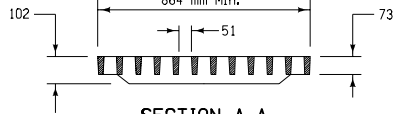
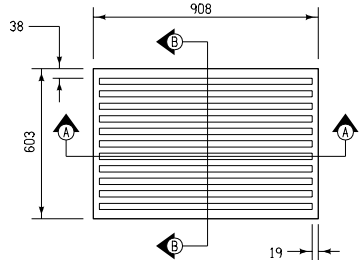


SECTION A-A

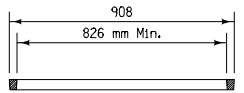


SECTION B-B

TYPE 2 GRATE
Minimum Mass = 95 kg

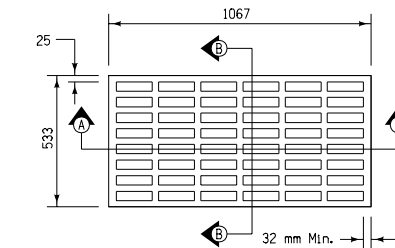


SECTION A-A

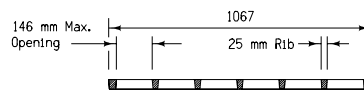


SECTION B-B

TYPE 7 GRATE
Minimum Mass = 79 kg

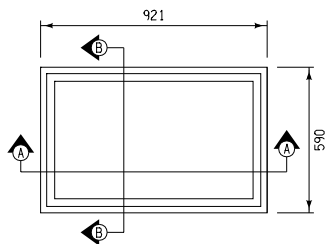


SECTION A-A

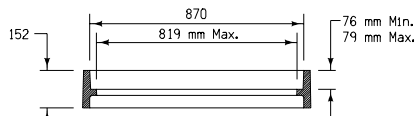


SECTION B-B

TYPE 8 GRATE
Minimum Mass = 68 kg

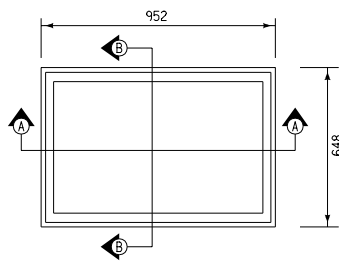


SECTION A-A

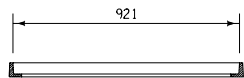


SECTION B-B

TYPE 2 FRAME
Minimum Mass = 91 kg

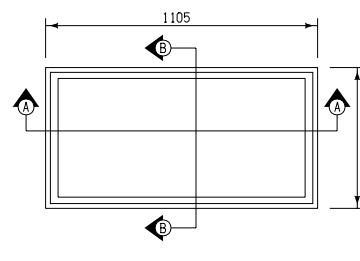


SECTION A-A

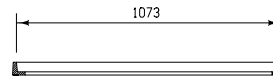


SECTION B-B

TYPE 7 FRAME
Minimum Mass = 27 kg



SECTION A-A



SECTION B-B

TYPE 8 FRAME
Minimum Mass = 27 kg

All dimensions given in millimeters unless noted.

METRIC VERSION	M Iowa Department of Transportation Highway Division	
	STANDARD ROAD PLAN RA-66B	
	REVISION: Revise General Notes.	REVISION NO. 1
	<i>William J. Steen</i> APPROVED BY DESIGN METHODS ENGINEER	REVISION DATE 10-21-03
INTAKE GRATES TYPES 2, 7, AND 8		