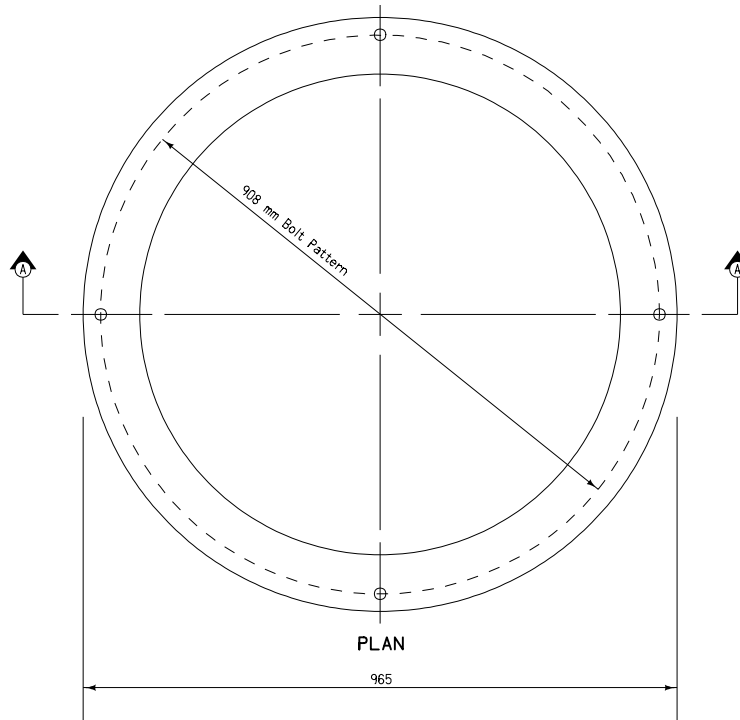
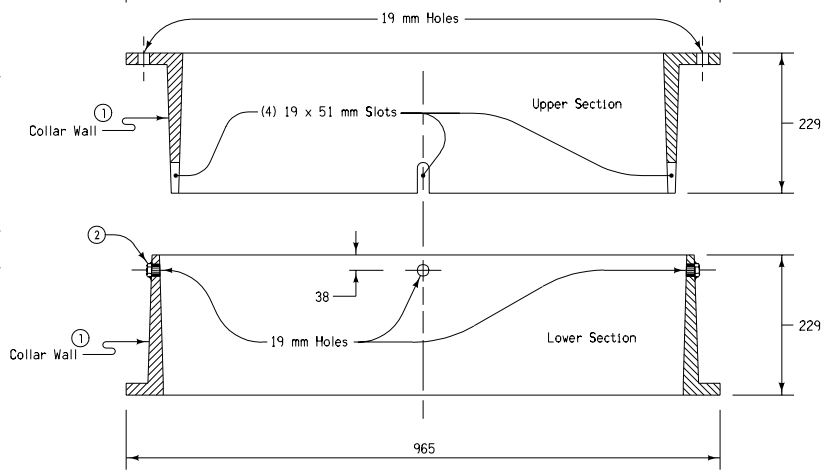


COLLAR DETAILS



PLAN



SECTION A-A

- ① Wall thickness may vary uniformly from base to the top or bottom of the casting.
- ② Tack weld (4) 12.7 mm nuts to outside of bottom settlement collar or drill and tap (4) holes for 12.7 millimeter Cap Screws in bottom settlement collar.
- ③ Remove the (4) 12.7 millimeter Cap Screws after surrounding concrete has set.

MINIMUM MASS	
Upper Section	95 kg
Lower Section	95 kg

See Standard Road Plans RA-67A and RA-67B for details of Grate and Frame.

All dimensions given in millimeters unless noted.

METRIC VERSION	Iowa Department of Transportation Highway Division	
	STANDARD ROAD PLAN RA-67C	
	REVISION: Revised General Notes.	REVISION NO. 1
	<i>William J. Steen</i> APPROVED BY DESIGN METHODS ENGINEER	REVISION DATE 10-21-03
SETTLEMENT COLLAR CASTINGS		