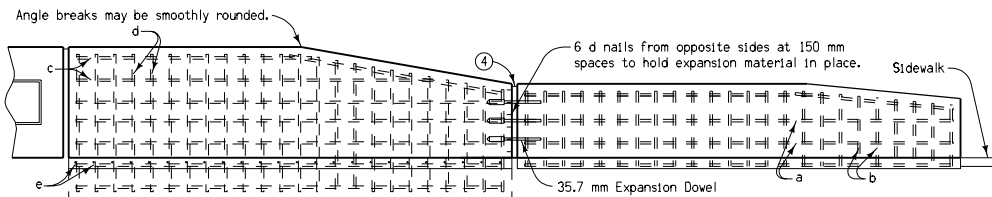


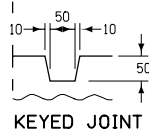
Construct rustic groove at approx. 600 mm interval on horizontal plane. Stop grooves and connect approx. 300 mm from joints or end of wall. Other details may be approved by the Engineer. Rustication not required for walls less than 0.9 m high.

RUSTICATION AND CONTRACTION JOINTS

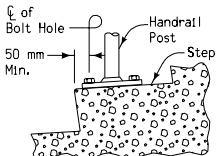


TYPICAL LONGITUDINAL SECTION OF RETAINING WALL
(Contraction joints required at 6.0 meter spacing.)

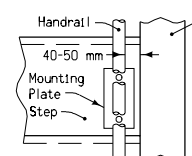
DESIGN QUANTITY TABLE						
WALL TYPE	TYPE 'A' WALL			TYPE 'B' WALL (3)		
Height - m	0.3	0.6	1.0	0.3	0.6	1.0
Concrete - m ³	1.8	2.0	2.4	2.6	2.9	3.2
					3.4	3.7



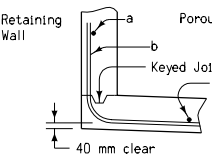
KEYED JOINT



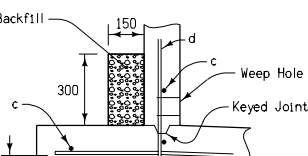
DETAIL 'A'



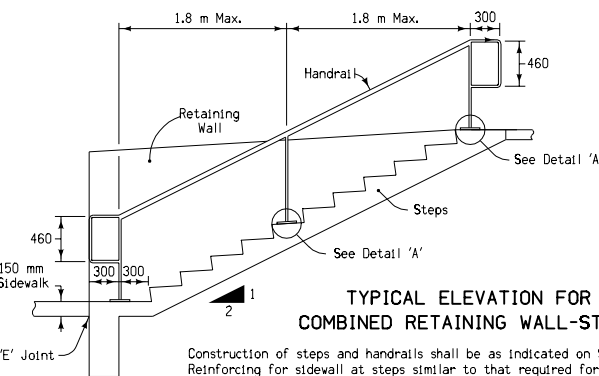
DETAIL 'B'



DETAIL 'C'

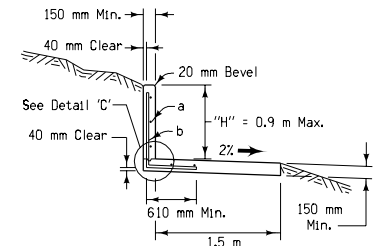


DETAIL 'D'

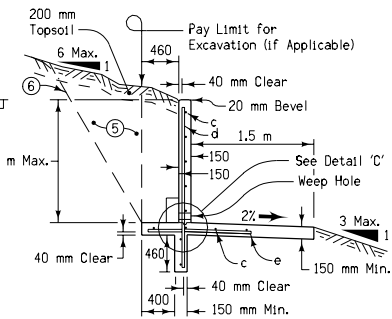


TYPICAL ELEVATION FOR COMBINED RETAINING WALL-STEPS

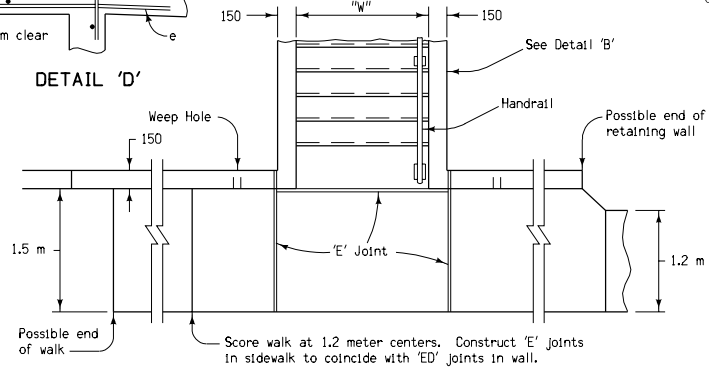
Construction of steps and handrails shall be as indicated on Standard Road Plan RB-1. Reinforcing for sidewalk at steps similar to that required for wall shown hereon.



TYPE 'A' WALL DETAILS



TYPE 'B' WALL DETAILS
Bottom and sides of footing and rear lug are not to be formed



TYPICAL PLAN FOR COMBINED RETAINING WALL-SIDEWALK AND COMBINED RETAINING WALL-STEPS

GENERAL NOTES:

This plan shows the details for the construction of combination Retaining Wall Sidewalk and Steps. Refer to project plans for specific construction requirements for individual locations. Concrete shall be the same as required for walks.

The work of finishing and dressing up the disturbed areas adjacent to retaining walls is considered incidental to other work.

Unless specifically required on project plans, the Type 'A' wall does not require the back of the wall to be formed, installation of weep holes, or the placing of porous backfill. Where forming the back of the wall is not done and sloughing occurs, the loose material will be removed and replaced with concrete at no additional expense to the Contracting Authority. The Engineer may require the back of the wall to be formed if deemed necessary. Refer to detail project plans for methods of determining excavation requirements for individual locations.


For walls more than 3'-0" high, weep holes approximately 3 inches in diameter at 8 feet intervals are required (or as otherwise indicated on project plans). Weep holes are to be formed with an approved rustproof device backed with copper screening or galvanized hardware cloth.

All reinforcing steel to be epoxy coated. Unless indicated otherwise, all necessary excavation, porous backfill and reinforcing steel, as well as all other work and material necessary for the construction described hereon, shall be included in the price bid for "Combined PCC Sidewalk and Retaining Wall" or "Combined PCC Steps and Retaining Wall" as appropriate. Quantities for the portion of side walk or steps constructed as part of retaining wall are included in the corresponding bid item above.

- Top bar 150 millimeters parallel to top of wall. Lap 420 millimeters minimum, as necessary. Tie securely.
- Quantities are for 6 meters of wall length.
- When specified, 0.27 cubic meters of porous backfill are required per 6 meters of wall length.
- 'ED' joint in wall with coinciding 'E' joint in sidewalk at approximately 12 meter spacing (18 meter maximum). See Standard Road Plan RH-52. Combine with angle break when feasible.
- Excavate and backfill as necessary.
- Contractor may excavate to optional excavation line where practical. Contractor may backfill with suitable soil or granular material. Backfill shall be placed and compacted as directed by the Engineer.

REINFORCING SCHEDULE (mm)					
WALL TYPE	MARK	SIZE	LENGTH	SPACING	NO. REQ.
Type 'A'	a	#10	Variable	300 Min., 380 Max.	Variable (1)
	b	#10	Variable	250	24 (2)
	c	#10	Variable	300 Min., 380 Max.	Variable (2)
Type 'B'	d	#10	"H" + 460	250	24
	e	#10	1210	250	24 (2)

All dimensions given in millimeters unless noted.

METRIC VERSION	Iowa Department of Transportation Highway Division	
	STANDARD ROAD PLAN	RB-2
	REVISION: Add detail for keyed joint.	
	 APPROVED BY DESIGN METHODS ENGINEER	
COMBINED RETAINING WALL SIDEWALK		