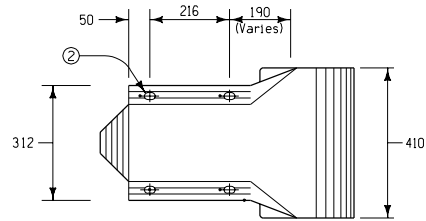
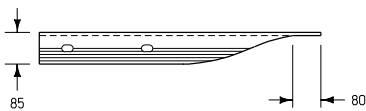


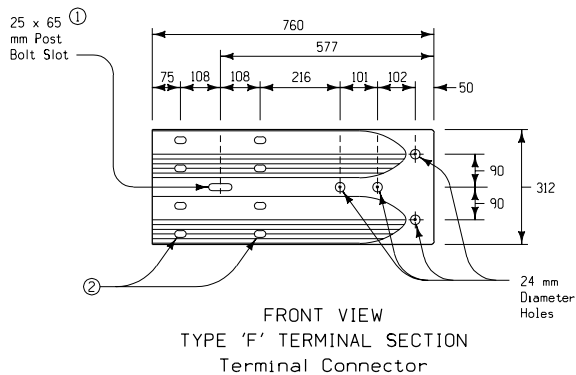
TOP VIEW



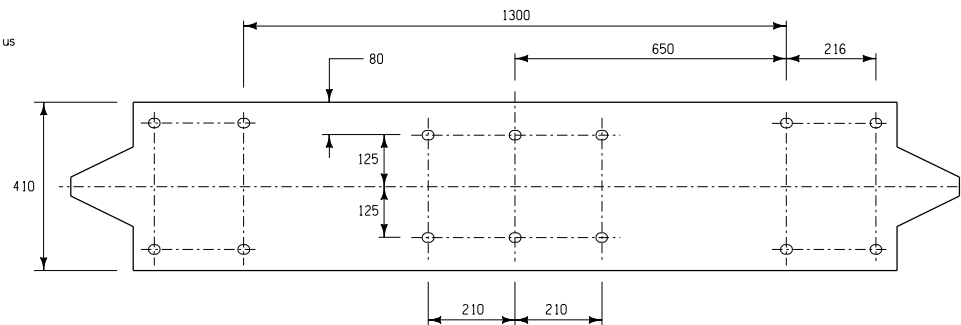
FRONT VIEW
TYPE 'B' TERMINAL SECTION
Rounded End



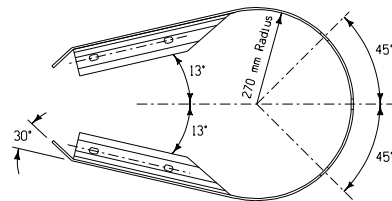
TOP VIEW



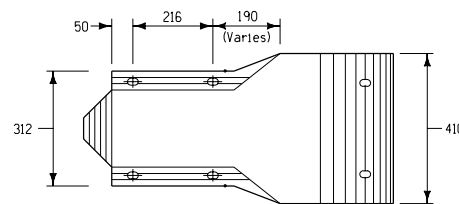
FRONT VIEW
TYPE 'F' TERMINAL SECTION
Terminal Connector



BUFFERED END SECTION
FLAT PLATE LAYOUT
All Slots are 24 x 30 mm



TOP VIEW



FRONT VIEW
TYPE 'E' TERMINAL SECTION
Buffer End

GENERAL NOTES:

Terminal section shall be required as part of the end treatment for all guardrail installations unless specifically indicated otherwise in project plans.

Fabrication and installation of terminal sections shall be in accordance with current Standard and Supplemental Specifications and other appropriate Standard Road Plans.

Refer to "Tabulation of Guardrail Installations" for additional details of installations.

The thickness of the type 'B' terminals shall not be less than 2.67 millimeters. The thickness of type 'E' and 'F' terminals shall not be less than 3.43 millimeters.

Furnishing and installing terminal sections will not be paid for separately, but shall be considered incidental to the price bid for other guardrail work required.

- ① If supplied with a 20 x 65 millimeter slot, the slot must be field reamed or drilled for a 22 millimeter bolt.
- ② 24 x 30 millimeter slots (acceptable if supplied with 24 x 76 millimeter slots).

All dimensions given in millimeters unless noted.

M	Iowa Department of Transportation Project Development Division	
	STANDARD ROAD PLAN	RE-2A
	REVISION: Remove references to RE-70 (MEL1) end anchorage.	REVISION NO. 4
	APPROVED BY: <i>David P. Smith</i> DESIGN METHODS ENGINEER 09-14-98	REVISION DATE 01-12-99
METRIC VERSION	FORMED STEEL BEAM RAILING TERMINAL SECTION	