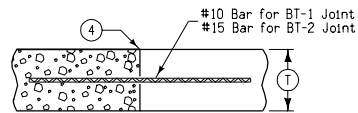


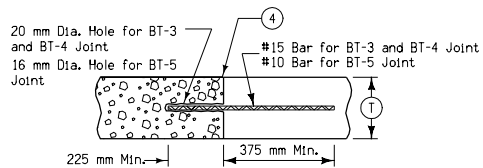
'B'
PLAIN JOINT
For Abutting Pavement Slabs



ABUTTING PAVEMENT JOINT - RIGID TIE

Where T is Less Than 200 mm
See Note ⑤ 'BT-1'
900 mm Long at 600 mm Centers

Where T is 200 mm or more
'BT-2'
900 mm Long at 750 mm Centers



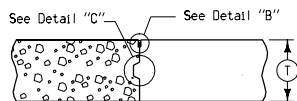
ABUTTING PAVEMENT JOINT - RIGID TIE

Where T is 200 mm or more

'BT-3'
600 mm Long at 750 mm Centers

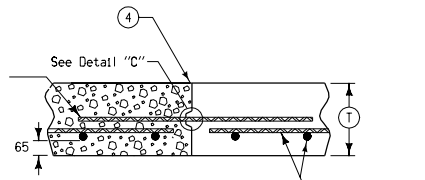
'BT-4'
600 mm Long at 375 mm Centers

Where T is Less Than 200 mm
'BT-5'
600 mm Long at 600 mm Centers

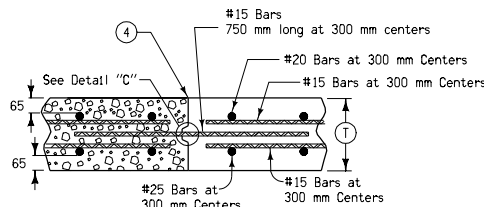


'K'
KEYED JOINT FOR ADJACENT SLABS
Where T is 200 mm or more

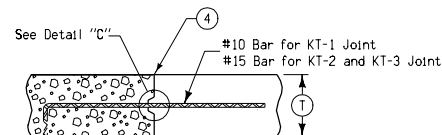
#15 Bars
750 mm long at
300 mm centers



'KS-1'
Joint for Single
Reinforced Pavement
(Bridge Approach)



'KS-2'
Joint for Double
Reinforced Pavement
(Bridge Approach)



ABUTTING PAVEMENT JOINT - KEYWAY TIE

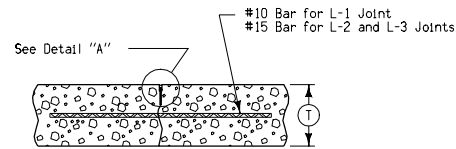
Where T is Less Than 200 mm

See Notes ① ⑤ 'KT-1'
750 mm Long at 600 mm Centers

Where T is 200 mm or more
See Notes ① ⑤ 'KT-2'
750 mm Long at 750 mm Centers

See Notes ① ⑤ 'KT-3'
750 mm Long at 375 mm Centers

KEYWAY DIMENSIONS				
Keyway Type	Pavement Thickness	(A)	(B)	
Standard	200 mm or greater	45	70	
Narrow	Less than 200 mm	25	50	

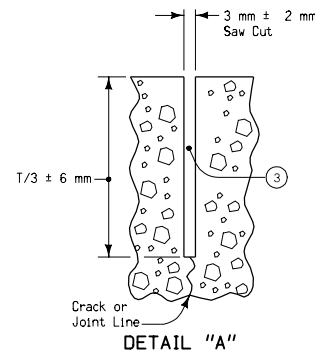


'L-1', 'L-2' and 'L-3'
Where T is Less Than 200 mm

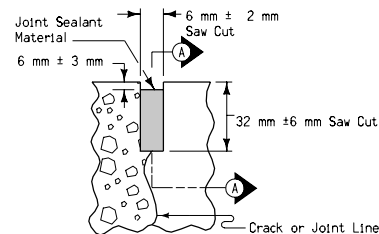
See Note ⑤ 'L-1'
900 mm Long at 600 mm Centers

Where T is 200 mm or more
See Note ⑤ 'L-2'
900 mm Long at 750 mm Centers

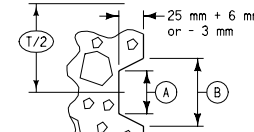
See Note ⑤ 'L-3'
900 mm Long at 375 mm Centers



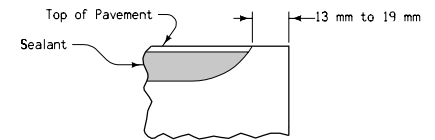
DETAIL "A"



DETAIL "B"

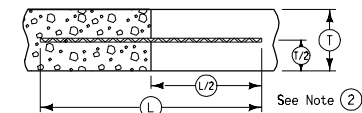


DETAIL "C"



SECTION A-A
Detail at Edge of Pavement

- Bar supports may be necessary for fixed form paving to insure the bar remains in a horizontal position in the plastic concrete.
- When tying into old pavement (T) represents the depth of sound Portland Cement Concrete.
- Sealant or cleaning not required.
- Sawing or sealing of joint not required.
- The following joints are interchangeable, subject to the pouring sequence:
'BT-1', 'L-1' and 'KT-1'
'KT-2' and 'L-2'
'KT-3' and 'L-3'



TYPICAL TIE BAR PLACEMENT
Applies to all joints unless otherwise detailed.

All dimensions given in millimeters unless noted.

M METRIC VERSION	Iowa Department of Transportation	REVISION
		18 10-17-06
	STANDARD ROAD PLAN	RH-51
		SHEET 1 of 1
<i>Deanna Mayfield</i> APPROVED BY DESIGN METHODS ENGINEER		
JOINTS (LONGITUDINAL CONTRACTION)		