

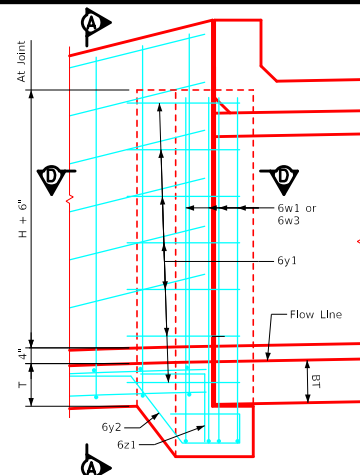
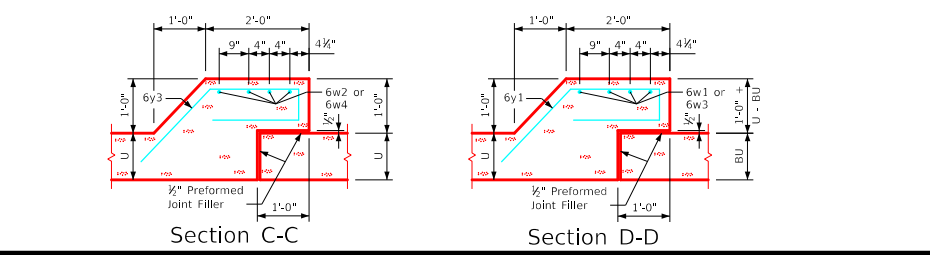
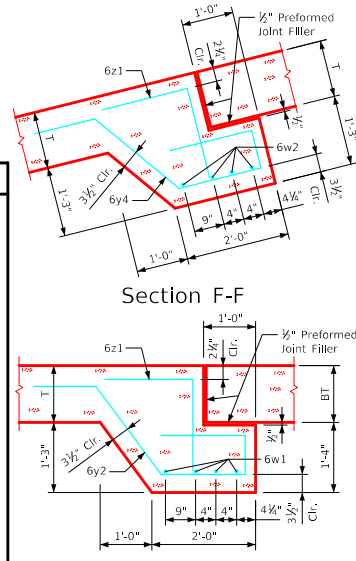
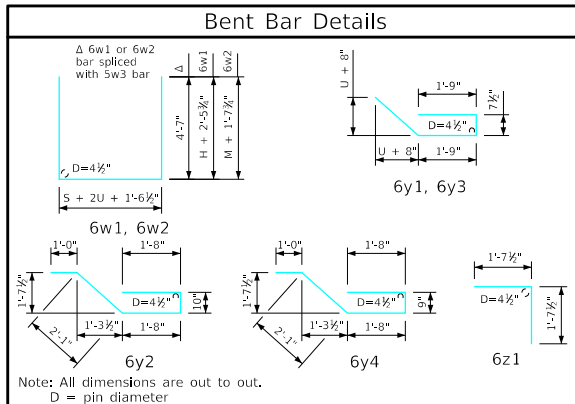
Estimate of Quantities - Flume Bell Joints

Junction Bell Joint		6' x 3'			6' x 4'			6' x 5'			6' x 6'			6' x 7'			6' x 8'			
Bar	Location	Shape	No.	Length	Weight	No.	Length	Weight	No.	Length	Weight	No.	Length	Weight	No.	Length	Weight			
6w1	Walls & Floor		4	20'-0"	120	4	18'-3"	110	4	18'-3"	110	4	18'-3"	110	4	18'-5"	111			
6w3	Walls Vert.	--	--	--	--	8	4'-4"	52	8	5'-4"	64	8	6'-4"	76	8	7'-4"	88			
6y1	Walls Horiz.		10	6'-2"	93	12	6'-2"	111	14	6'-2"	130	16	6'-2"	148	18	6'-2"	167			
6y2	Floor Vert.		8	7'-3"	87	8	7'-3"	87	8	7'-3"	87	8	7'-3"	87	8	7'-3"	87			
6z1	Floor Vert.		8	3'-3"	39	8	3'-3"	39	8	3'-3"	39	8	3'-3"	39	8	3'-3"	39			
Total Weight (LB)			339			399			430			460			491			525		
Concrete (CY)		Footings			1.3			1.3			1.3			1.3			1.3			
		Walls			0.6			0.8			1.0			1.2			1.4			
		Total			1.9			2.1			2.3			2.5			2.7			
Chute Bell Joint		6' x 3'			6' x 4'			6' x 5'			6' x 6'			6' x 7'			6' x 8'			
Bar	Location	Shape	No.	Length	Weight	No.	Length	Weight	No.	Length	Weight	No.	Length	Weight	No.	Length	Weight			
6w2	Walls & Floor		4	16'-10"	101	4	18'-4"	110	4	19'-10"	119	4	18'-3"	110	4	18'-5"	111			
6w4	Walls Vert.	--	--	--	--	--	--	--	--	--	--	8	4'-0"	48	8	4'-9"	57			
6y3	Walls Horiz.		6	6'-2"	56	8	6'-2"	74	10	6'-2"	93	12	6'-2"	111	14	6'-3"	131			
6y4	Floor Vert.		8	7'-2"	86	8	7'-2"	86	8	7'-2"	86	8	7'-2"	86	8	7'-2"	86			
6z1	Floor Vert.		8	3'-3"	39	8	3'-3"	39	8	3'-3"	39	8	3'-3"	39	8	3'-3"	39			
Total Weight (LB)			282			309			337			394			403			433		
Concrete (CY)		Footings			1.3			1.3			1.3			1.3			1.3			
		Walls			0.3			0.5			0.6			0.8			0.9			
		Total			1.6			1.8			1.9			2.1			2.3			

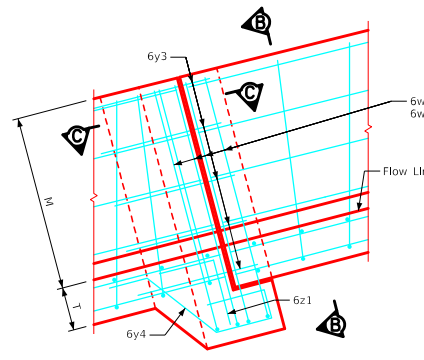
Barrel & Chute Dimensions

S x H	M	T	U	BT	BU
6' x 3'	2'-3"	11"	9"	10"	9"
6' x 4'	3'-0"	11"	9"	10"	9"
6' x 5'	3'-9"	11"	9"	10"	9"
6' x 6'	4'-6"	11"	9"	10"	9"
6' x 7'	5'-3"	11"	9"	10"	9"
6' x 8'	6'-0"	11"	10"	10"	9"

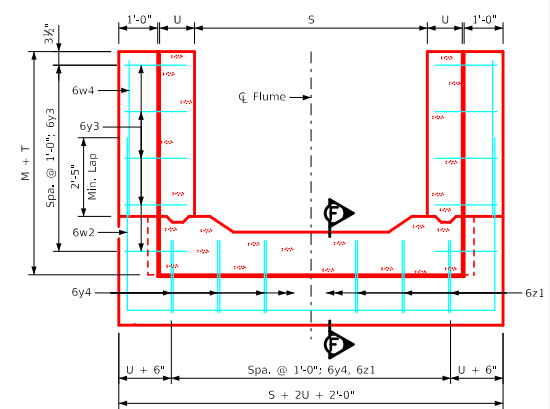
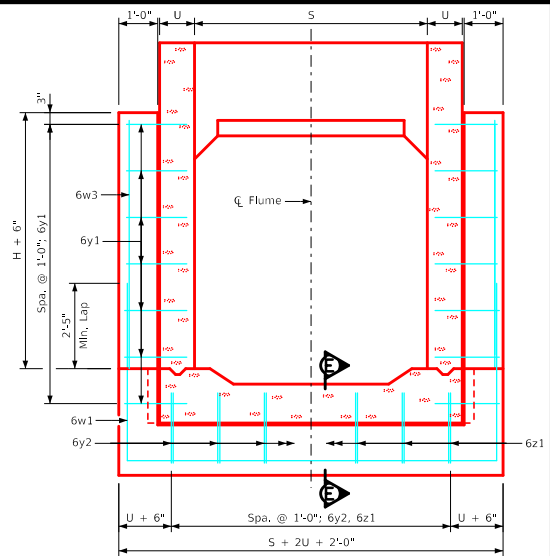
S = Culvert Span
H = Culvert Height



Part Elevation - Junction Bell Jt.



Part Elevation - Chute Bell Jt.



- #### Notes:
- Dimensions and quantities shown based on "U" flume walls, "BU" barrel walls, "T" flume floor and "BT" barrel floor thicknesses.
 - Change lengths of bars 6w1 and adjust reinforcing steel and concrete quantities accordingly for wall and floor thicknesses other than shown.
 - Floor bars m1 are to be shortened 6" at bell joints.
 - See Sheet RCF 01-20 for general information.

LATEST REVISION DATE		APPROVED BY BRIDGE ENGINEER		
			Standard Design Single Reinforced Concrete Box Culverts December, 2020	
			Flume Bell Joint Details 6'-0" Span	FBJ 02-20

ENGLISH\GDFLUMES.DGN - FBI_02-20 - THIS SHEET ISSUED 12-2020.