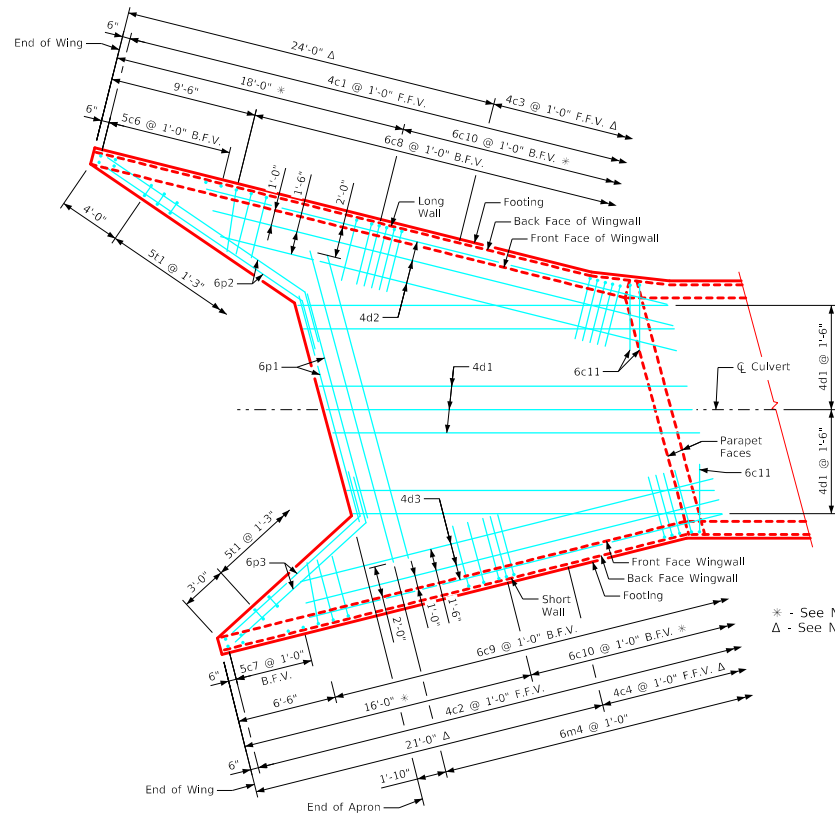


Plan View - Top of Apron Reinforcing



Plan View - Bottom of Apron Reinforcing

Notes:

1. Bar spacings and positions shown are similar for all sizes of headwalls in this standard.
2. Wingwall bars consistently referenced from end of wing for all headwalls.
3. Top transverse floor bars are referenced approximately 4" from the back of the parapet for all headwalls.
4. There are no 6c6 bars in the 3' thru 6' height headwalls.
5. 4c3 & 4c4 bars used only in the 9' thru 14' height headwalls.
6. For dimension table see Sheet FWH 15-2-21.
7. For reinforcing in curtain wall see Curtain Wall Details on Sheet FWH 15-4-21.

LATEST REVISION DATE	APPROVED BY BRIDGE ENGINEER		
		Standard Design - Single Reinforced Concrete Box Culverts <b>Flared Wing Headwalls</b> February, 2021	
Apron Details 15° Skew		FWH 15-3-21	