

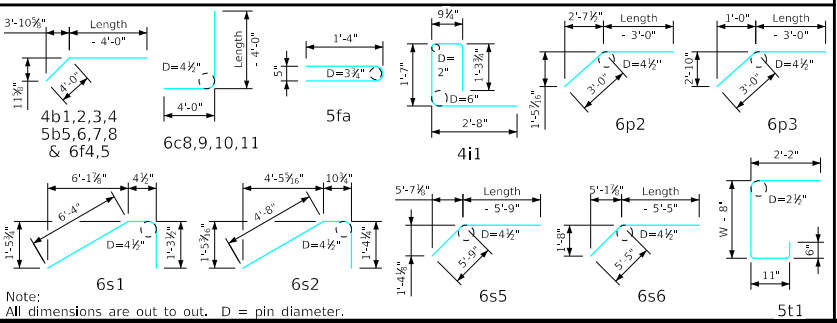
Bill of Reinforcing for One Headwall 30° Skew Span x Culvert Height

Bar	Location	Shape	8' x 10'			8' x 9'			8' x 8'			8' x 7'			8' x 6'			8' x 5'			8' x 4'			Bar
			No.	Length	Wt.	No.	Length	Wt.	No.	Length	Wt.	No.	Length	Wt.	No.	Length	Wt.	No.	Length	Wt.	No.	Length	Wt.	
5fa	Fence Anchor (Galv.)		2	2'-10"	6	2	2'-10"	6	2	2'-10"	6	2	2'-10"	6	2	2'-10"	6	2	2'-10"	6	2	2'-10"	6	5fa

Δ Includes top of wingwall quantities.
 * Assumes apron and floor are equal thickness, adjust concrete quantities for transition where apron and floor thickness are not equal.

Note: Weight of bars over 40'-0" long include an allowance of 2'-5" for lap. Lengths shown for bars over 40'-0" long do not include lap.

Bent Bar Details



- ### Headwall Notes:
- See Sheet FWH G2-21 for General Notes, Specifications, and Design Stresses.
 - This headwall is based on a 3:1 slope normal to centerline of roadway.
 - The sides of the apron are to be formed to ensure correct line and grade.
 - All apron reinforcing steel is to be supported by bar chairs at intervals of not more than 3'-0" in either direction as outlined in the Standard Specifications.
 - Clear distance from face of concrete to near reinforcing bar is to be 2" unless otherwise noted or shown. Clearance to the bottom ends of vertical bars shall be 3 inches.
 - Concrete quantities are estimated from back of parapet.
 - Horizontal tails of bars "b" and "s" estimated to extend 2'-5" beyond back of parapet (into end of barrel). Longitudinal bars "d", "6f1", "6f4" and "6f5" estimated to project into end section of barrel a minimum of 2'-5" beyond back of parapet. The "length" column reflects total number of feet necessary to meet these requirements.
 - Dimensions are in feet and inches unless otherwise noted.

LATEST REVISION DATE APPROVED BY BRIDGE ENGINEER	
	Standard Design - Single Reinforced Concrete Box Culverts
	<h2 style="margin: 0;">Flared Wing Headwalls</h2>
	February, 2021
<h3 style="margin: 0;">Quantity Tabulation</h3>	
8'-0" Span 30° Skew	FWH 30-10-21