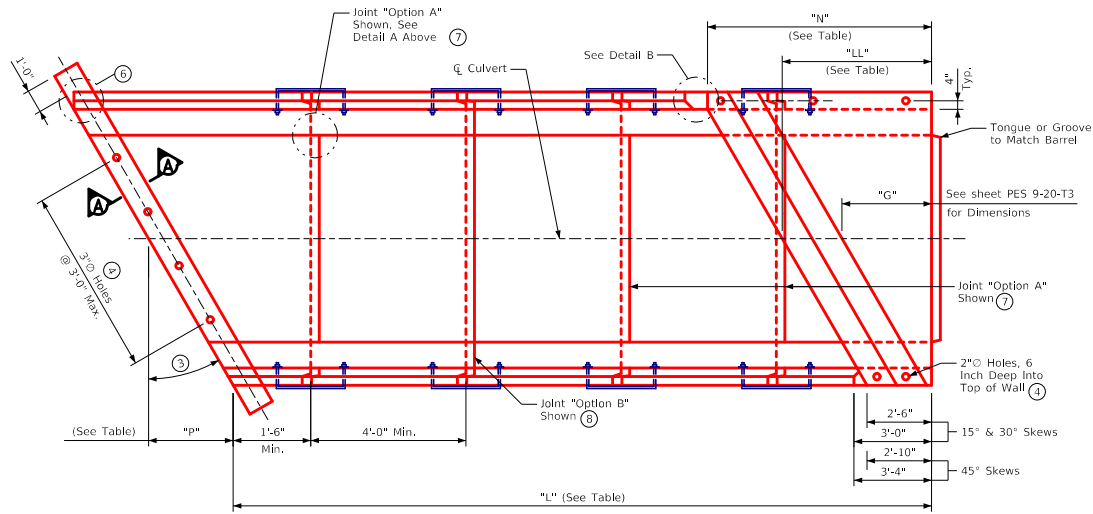
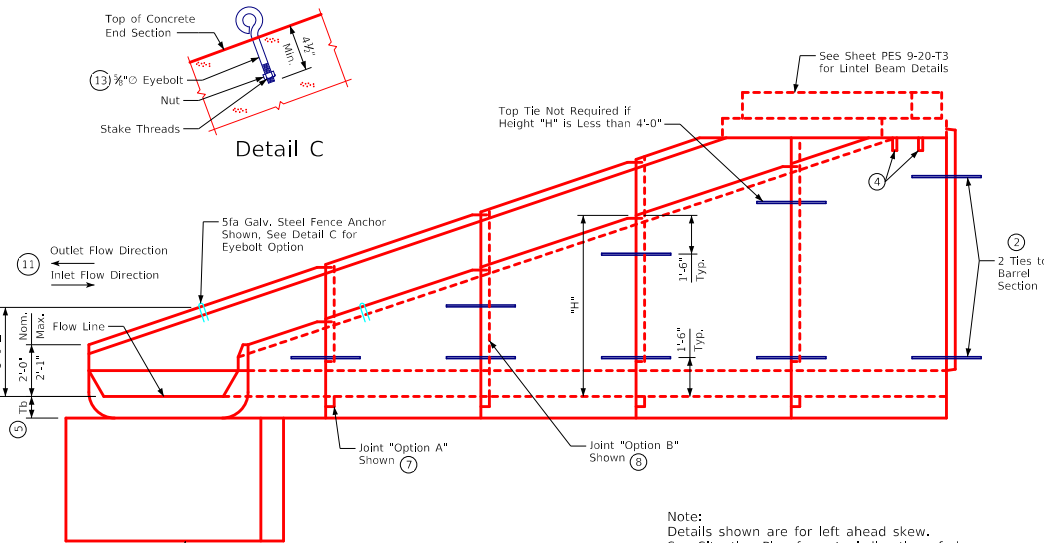


REVISED 10-2021: Added lintel beam connection hole location in Plan View. ENGLISHIGNEDPRECASTCULVERTS.DGN - PES 5-20-T3 S1 - THIS SHEET ISSUED 12-2020.

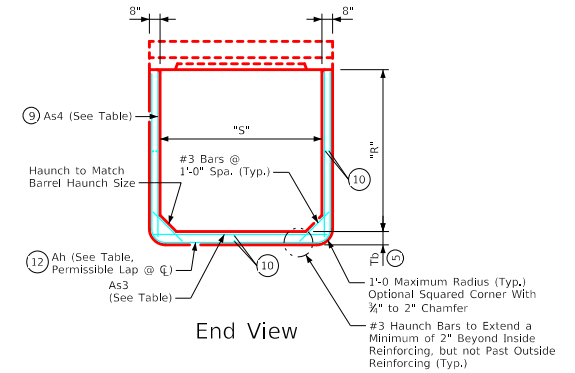


Plan View

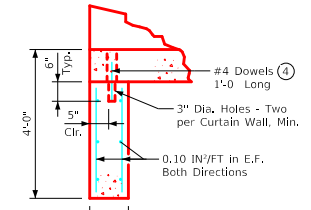


Elevation

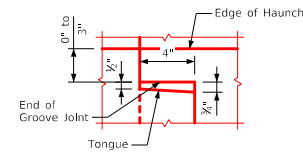
Note:  
 Details shown are for left ahead skew.  
 See Situation Plan for actual direction of skew.  
 Details for right ahead skews similar.  
 See sheet PES 6-20-T3 for additional information  
 and notes used in conjunction with this sheet.



End View

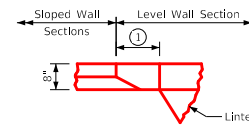


Section A-A

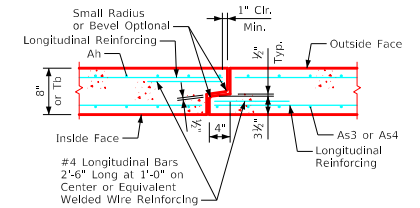


Detail A

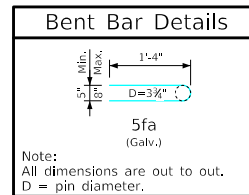
(Detail Shown at Floor; Similar at Walls)



Detail B



Tongue and Groove Joint Detail



Note:  
 All dimensions are out to out.  
 D = pin diameter.

LATEST REVISION DATE 10-2021 APPROVED BY BRIDGE ENGINEER		
	Standard Design <b>Single Precast Reinforced Concrete Box Culverts</b> December, 2020	
	<b>Type 3 End Section Details</b>	<b>PES 5-20-T3</b> Sheet 1 of 2