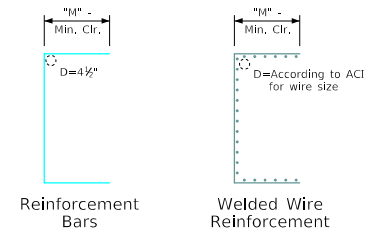
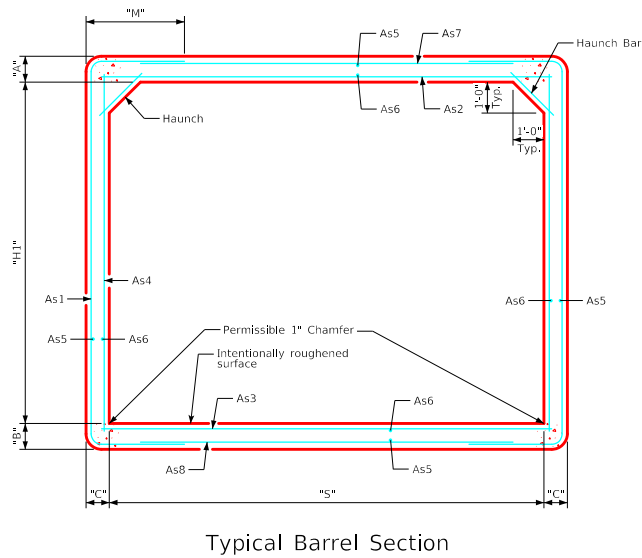


Variable Dimensions and Quantities for 14' Span Barrel Sections																						
Dimensions										Reinforcement Requirements							Weight (LB/FT)					
Size	Class	f'c (ksi)	Fill (FT)	S (FT)	H1 (FT)	A (IN)	B (IN)	C (IN)		As1		As2		As3		As4		As7/As8				
										Area (IN ² /FT)	Length	M	Area (IN ² /FT)	Length	Area (IN ² /FT)	Length	Area (IN ² /FT)	Length	Area (IN ² /FT)	Length		
14x12	1	5.0	2-5	14	12	10	10	10		0.80	20'-10"	3'-11"		1.20	14'-6"	1.29	14'-6"	0.24	12'-6"	0.24	13'-8"	7070
	2	5.0	6-9	14	12	10	10	10		1.01	20'-8"	3'-10"		1.47	14'-6"	1.62	14'-6"	0.24	12'-6"	0.24	13'-8"	7070
	3	6.0	10-15	14	12	12	12	11		1.13	20'-2"	3'-5"		1.55	14'-6"	1.65	14'-6"	0.29	12'-6"	0.29	13'-10"	8200



Bent Bar Details

All dimensions are out to out.
D = pin diameter (min.).
Pin diameter may be increased if needed to maintain clear cover.

Notes:

1. Longitudinal reinforcement denoted as As5 and As6 must be placed in slab, floor, and walls and must be 0.06 in²/ft minimum.
2. All reinforcement lengths and areas are minimum requirements.
3. If reinforcing bars are substituted for welded wire reinforcing, dimension "M" and/or length of the As7/As8 reinforcement shall be adjusted to ensure adequate lap length is provided.
4. Weight of sections assumes a density of 150 pcf and squared corners.
5. See Sheets PPT-RCB G1-20 and PPT-RCB G3-20 for additional information and notes.

LATEST REVISION DATE	APPROVED BY BRIDGE ENGINEER		
		Precast Standard Design - Walkways and Trails Precast Reinforced Concrete Pedestrian Tunnel August, 2020	
		Precast Tunnel Details 14' Span Barrel Sections	PPT-RCB 14-20