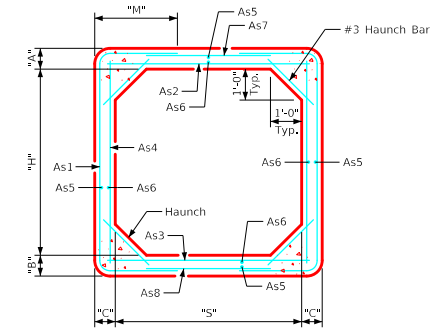
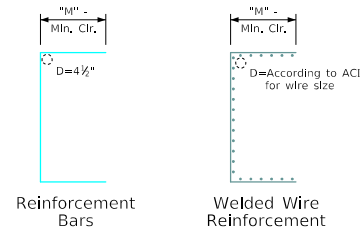


Variable Dimensions and Quantities for 6' Span Barrel Sections

Dimensions		Reinforcement Requirements												Weight (LB/FT)						
		As1			As2		As3		As4		As7/As8									
Size	Class	f'c (KSI)	Fill (FT)	S (FT)	H (FT)	A (IN)	B (IN)	C (IN)	Area (IN ² /FT)	Length	M	Area (IN ² /FT)	Length	Area (IN ² /FT)	Length	Area (IN ² /FT)	Length	Area (IN ² /FT)	Length	
6'x3'	1	5.0	2-10	6	3	8	8	8	0.38	7'-10"	2'-1"	0.27	6'-6"	0.24	6'-6"	0.20	3'-6"	0.20	5'-4"	2370
	2	5.0	11-19	6	3	8	8	8	0.47	8'-0"	2'-2"	0.33	6'-6"	0.35	6'-6"	0.21	3'-6"	0.20	5'-4"	2370
	3	5.0	20-25	6	3	8	8	8	0.60	8'-4"	2'-4"	0.44	6'-6"	0.44	6'-6"	0.28	3'-6"	0.20	5'-4"	2370
6'x4'	1	5.0	2-11	6	4	8	8	8	0.34	8'-6"	1'-11"	0.33	6'-6"	0.32	6'-6"	0.20	4'-6"	0.20	5'-4"	2570
	2	5.0	12-19	6	4	8	8	8	0.39	8'-10"	2'-1"	0.44	6'-6"	0.44	6'-6"	0.20	4'-6"	0.20	5'-4"	2570
	3	5.0	20-25	6	4	8	8	8	0.51	9'-2"	2'-3"	0.56	6'-6"	0.56	6'-6"	0.20	4'-6"	0.20	5'-4"	2570
6'x5'	1	5.0	2-12	6	5	8	8	8	0.31	9'-4"	1'-10"	0.41	6'-6"	0.39	6'-6"	0.20	5'-6"	0.20	5'-4"	2770
	2	5.0	13-19	6	5	8	8	8	0.38	9'-10"	2'-1"	0.51	6'-6"	0.53	6'-6"	0.20	5'-6"	0.20	5'-4"	2770
	3	5.0	20-25	6	5	8	8	8	0.47	10'-0"	2'-2"	0.65	6'-6"	0.66	6'-6"	0.20	5'-6"	0.20	5'-4"	2770
6'x6'	1	5.0	2-12	6	6	8	8	8	0.38	10'-6"	1'-11"	0.48	6'-6"	0.47	6'-6"	0.20	6'-6"	0.20	5'-4"	2970
	2	5.0	13-19	6	6	8	8	8	0.32	10'-10"	2'-1"	0.57	6'-6"	0.60	6'-6"	0.20	6'-6"	0.20	5'-4"	2970
	3	5.0	20-25	6	6	8	8	8	0.40	11'-2"	2'-3"	0.72	6'-6"	0.74	6'-6"	0.20	6'-6"	0.20	5'-4"	2970
6'x7'	1	5.0	2-13	6	7	8	8	8	0.29	11'-10"	2'-1"	0.56	6'-6"	0.56	6'-6"	0.20	7'-6"	0.20	5'-4"	3170
	2	5.0	14-19	6	7	8	8	8	0.31	12'-4"	2'-4"	0.63	6'-6"	0.68	6'-6"	0.20	7'-6"	0.20	5'-4"	3170
	3	5.0	20-25	6	7	8	8	8	0.40	12'-8"	2'-6"	0.78	6'-6"	0.81	6'-6"	0.20	7'-6"	0.20	5'-4"	3170
6'x8'	1	5.0	2-13	6	8	8	8	8	0.32	13'-4"	2'-4"	0.66	6'-6"	0.66	6'-6"	0.20	8'-6"	0.20	5'-4"	3370
	2	5.0	14-19	6	8	8	8	8	0.31	13'-10"	2'-7"	0.71	6'-6"	0.74	6'-6"	0.20	8'-6"	0.20	5'-4"	3370
	3	5.0	20-25	6	8	8	8	8	0.39	14'-4"	2'-10"	0.84	6'-6"	0.89	6'-6"	0.23	8'-6"	0.20	5'-4"	3370



Typical Barrel Section



Bent Bar Details

All dimensions are out to out.
D = pin diameter (min.).
Pin diameter may be increased if needed to maintain clear cover.

Notes:

1. Longitudinal reinforcement denoted as As5 and As6 must be placed in slab, floor, and walls and must be 0.06 in²/ft minimum.
2. All reinforcement lengths and areas are minimum requirements.
3. If reinforcing bars are substituted for welded wire reinforcing, dimension "M" and/or length of the As7/As8 reinforcement shall be adjusted to ensure adequate lap length is provided.
4. Weight of sections assumes a density of 150 PCF and squared corners.
5. See PRCB G1-20 and G2-20 for additional information and notes.

LATEST REVISION DATE	APPROVED BY BRIDGE ENGINEER 		
		Standard Design Single Precast Reinforced Concrete Box Culverts December, 2020	
		Culvert Barrel Details 6'-0" Span Barrel Sections	PRCB 6-20

ENGLISHIGNEDPRECASTCULVERTS.DGN - PRCB 6-20 - THIS SHEET ISSUED 12-2020.