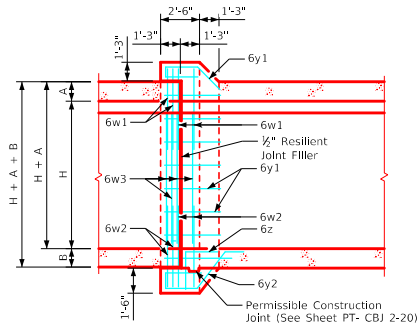
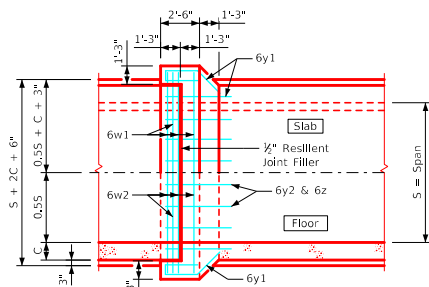


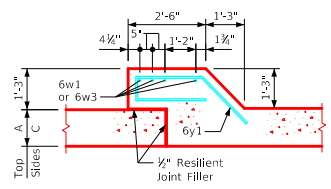
Joint Detail Section Thru Barrel



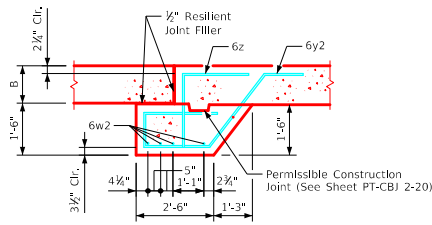
Longitudinal Section



Plan View



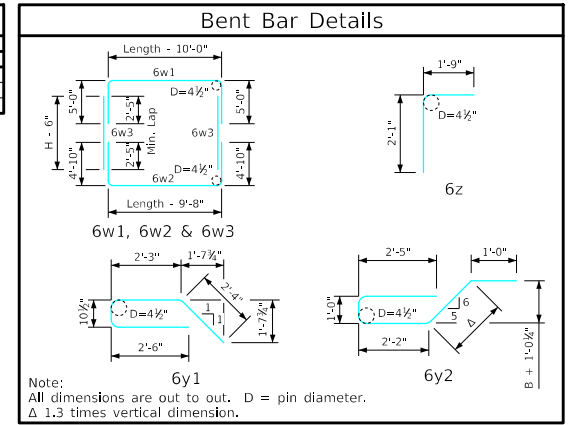
Top & Sides - Bars 6y1



Bottom - Bars 6y2 & 6z

| | | Est. of Quantities - One Joint | | | | | | | | | |
|---------------------------|----------------|--------------------------------|-----|--------------|--------|--------------|---------|--------|-----|---------|--------|
| Bill of Reinforcing Steel | | 14' x 12'-4" | | 12' x 12'-4" | | 12' x 11'-4" | | | | | |
| Bar | Location | Shape | No. | Length | Weight | No. | Length | Weight | No. | Length | Weight |
| 6w1 | Slab & Walls | | 4 | 28'-0" | 168 | 4 | 26'-0" | 156 | 4 | 25'-10" | 155 |
| 6w2 | Floor & Walls | | 4 | 27'-8" | 166 | 4 | 25'-8" | 154 | 4 | 25'-6" | 153 |
| 6w3 | Walls | | 8 | 11'-10" | 142 | 8 | 11'-10" | 142 | 8 | 10'-10" | 130 |
| 6y1 | Top & Sides | | 44 | 8'-0" | 529 | 42 | 8'-0" | 505 | 40 | 8'-0" | 481 |
| 6y2 | Bottom | | 16 | 9'-6" | 228 | 14 | 9'-4" | 196 | 14 | 9'-4" | 196 |
| 6z | Bottom & Floor | | 16 | 3'-10" | 92 | 14 | 3'-10" | 81 | 14 | 3'-10" | 81 |
| Total Weight (LB) | | | | | 1325 | | | 1234 | | | 1196 |
| Total Concrete (CY) | | | | | 9.9 | | | 9.2 | | | 8.9 |

| Barrel Size | Barrel Dimension | | | Bell Joint Quantities (CY) | | |
|--------------|------------------|-------|-----|----------------------------|-------|-------|
| | A | B | C | Footing | Walls | Slab |
| 12' x 11'-4" | 10.5" | 13" | 11" | 3,089 | 3,140 | 2,652 |
| 12' x 12'-4" | 10.5" | 13" | 12" | 3,118 | 3,426 | 2,677 |
| 14' x 12'-4" | 12" | 14.5" | 12" | 3,497 | 3,426 | 3,002 |



Note:
All dimensions are out to out. D = pin diameter.
Δ 1.3 times vertical dimension.

Notes:

- Dimensions and quantities shown are based on slab, floor, and wall thicknesses (A, B, and C, respectively). Values for these dimensions, under varying fill conditions, can be found on the reinforced concrete pedestrian tunnel detail sheets.
- Change lengths of bars 6w1, 6w2, 6z, and adjust reinforcing steel and concrete quantities accordingly for slab, wall, and floor thicknesses other than shown.
- All bar lengths are estimated with a 2" clearance from concrete edge to outside of bar, except as noted.
- Material and construction to be in accordance with the current Standard Specifications of I.D.O.T.
- See Sheet PT-RCB G1-20 for General Information, Specifications, and Design Stresses.
- Barrel floor bars m1 & m9 are to be shortened 6" in length at bell joints.

| | | | |
|----------------------|---------------------------------|---|-------------|
| LATEST REVISION DATE | APPROVED BY BRIDGE ENGINEER | Cast-in-Place Standard Design - Walkways and Trails Reinforced Concrete Pedestrian Tunnel August, 2020 | |
| | | Pedestrian Tunnel Bell Joints | PT-CBJ 1-20 |
| | | | |