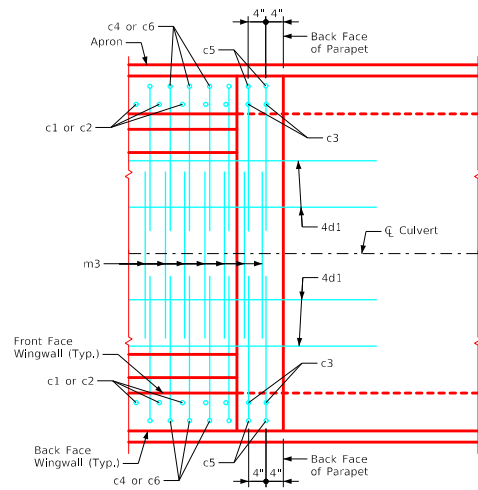
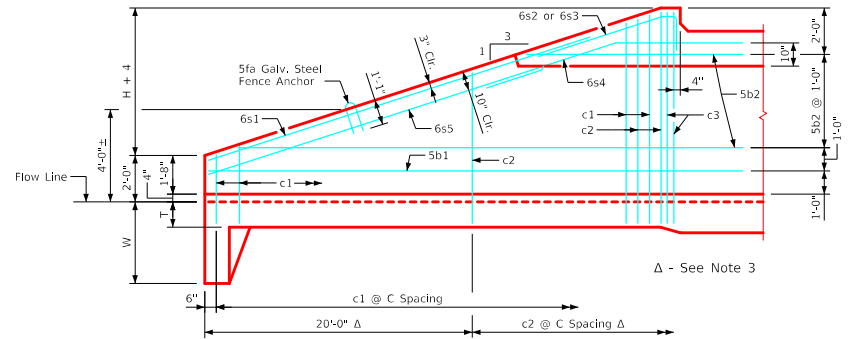


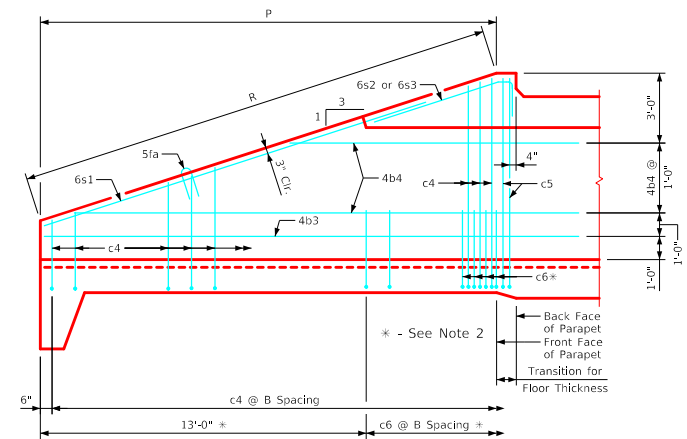
ENGLISHLRFDDESIGNEDSINGLECULVERTS.DGN - PWH 0-3-20 - THIS SHEET ISSUED 07-2020.



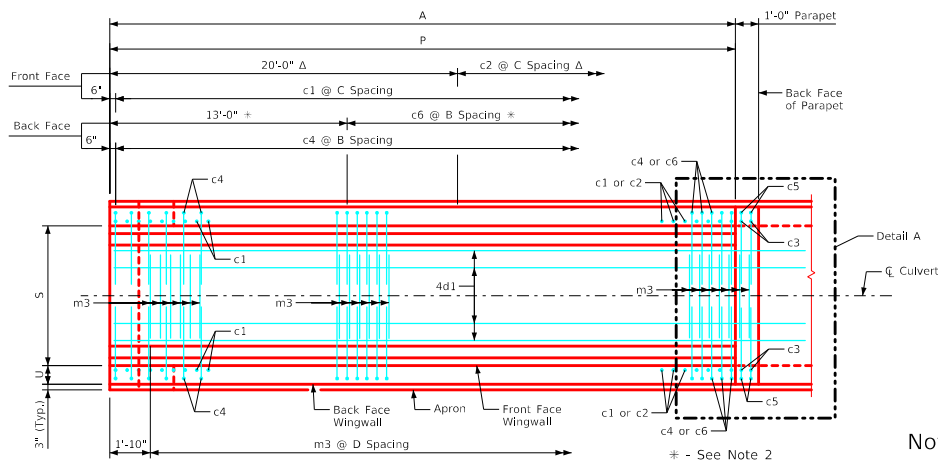
Detail A



Typical View - Front Face Wingwall Reinforcing



Typical View - Back Face Wingwall Reinforcing



Plan View - Bottom Apron Reinforcing  
(Curtain Wall Reinforcing not shown, See Sheet PWH 0-2-20)

**Notes:**

1. Bar spacings and positions shown are similar for all sizes of headwalls in this standard.
2. Not applicable for 3' thru 5' height headwalls.
3. Not applicable for 3' thru 8' height headwalls.
4. For headwall dimensions and bar spacing see Sheet PWH 0-1-20.
5. Apron m3 bars are to be centered on  $\bar{C}$  culvert.
6. B.F.V. (c5) and F.F.V. (c3) bars are approximately 4" from the back of parapet for all headwalls.

LATEST REVISION DATE  APPROVED BY BRIDGE ENGINEER 		
	Standard Design - Single Reinforced Concrete Box Culverts  <b>Parallel Wing Headwalls</b>	
	July, 2020	
	<b>Wingwall Elevations &amp; Bottom Apron Reinforcing</b> 0° Skew	<b>PWH 0-3-20</b>