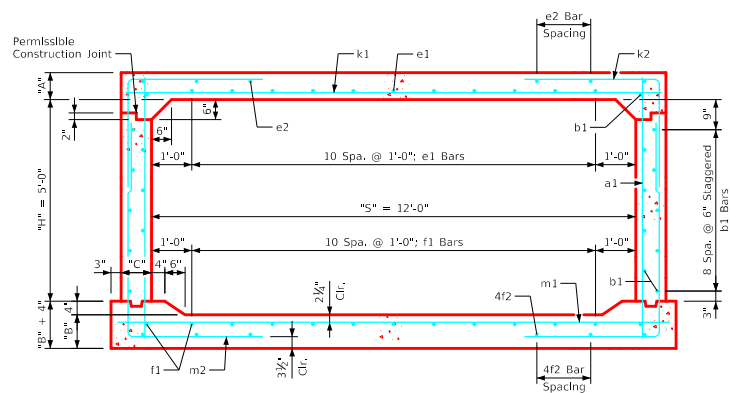
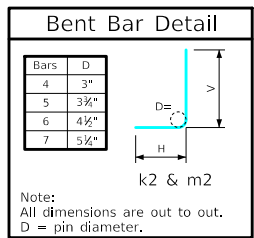


Variable Dimensions and Quantities for 12' x 5' Barrel Sections

Dimensions										Bar List																		Quantities																					
Fill	S	H	A	B	C	D	a1		b1		e1		e2		f1		f2		k1		k2		k9		m1		m2		m9		Concrete (CY/FT)				Steel (LB/FT)														
0	1	2-3	4-6	7-9	10	11-15	16-20	21-25	26-30	31-35	36-40	41-45	46-50	51-55	Size	Sp.	L	Size	Sp.	No.	Size	Sp.	No.	Size	Sp.	No.	Size	Sp.	No.	Size	Sp.	No.	Size	Sp.	L	Size	Sp.	L	Size	Sp.	L	Slab	Floor	Walls	Total				
0	12	5	13.5	13	9	9	4	12	7'-1	4	6	20	5	12	11	4	14	6	4	12	13	4	13	8	8	12	13'-2	5	6	6'-7	3'-0	3'-7	5	13'-2	7	9	13'-8	5	6	9'-5	3'-11	5'-6	5	13'-8	0.595	0.598	0.257	1.450	198.18
1	12	5	12.5	13	9	6	4	6	7'-0	4	6	20	5	12	11	4	16	6	4	12	13	4	17	6	8	12	13'-2	4	6	6'-8	3'-4	3'-4	4	13'-2	5	6	13'-8	5	6	8'-11	3'-5	5'-6	5	13'-8	0.553	0.598	0.257	1.408	183.66
2-3	12	5	8.5	10	9	9	4	12	6'-5	4	6	20	5	12	11	4	13	8	4	12	13	4	13	8	9	13'-2	7	9	7'-10	3'-11	3'-11	7	13'-2	6	6	13'-8	7	9	9'-1	3'-10	5'-3	7	13'-8	0.387	0.469	0.257	1.113	242.55	
4-6	12	5	8	10.5	9	6	4	6	6'-5	4	6	20	4	12	11	4	17	6	4	12	13	4	16	6	6	13'-2	6	6	7'-0	3'-6	3'-6	6	13'-2	6	6	13'-8	5	6	8'-8	3'-4	5'-4	5	13'-8	0.366	0.490	0.257	1.113	216.97	
7-9	12	5	8.5	10.5	9	9	4	12	6'-6	4	6	20	4	12	11	4	16	6	4	12	13	4	16	6	7	13'-2	7	9	7'-3	3'-4	3'-11	7	13'-2	7	6	13'-8	7	9	8'-8	3'-4	5'-4	7	13'-8	0.387	0.490	0.257	1.134	250.79	
10	12	5	9	10.5	9	9	4	12	6'-6	4	6	20	4	12	11	4	15	6	4	12	13	4	15	6	7	13'-2	6	6	6'-8	3'-1	3'-7	6	13'-2	7	6	13'-8	6	6	8'-6	3'-2	5'-4	6	13'-8	0.407	0.490	0.257	1.154	251.58	
11-15	12	5	10.5	12.5	9	9	4	12	6'-10	4	6	20	4	12	11	4	13	6	4	12	13	4	13	6	7	13'-2	7	9	6'-11	2'-10	4'-1	7	13'-2	8	6	13'-8	7	9	8'-4	2'-10	5'-6	7	13'-8	0.470	0.577	0.257	1.304	264.79	
16-20	12	5	12.5	15	9	6	4	6	7'-2	4	6	20	4	12	11	4	11	6	4	12	13	4	11	6	8	13'-2	5	6	5'-11	2'-5	3'-6	5	13'-2	8	6	13'-8	5	6	8'-1	2'-5	5'-8	5	13'-8	0.553	0.685	0.257	1.495	262.05	
21-25	12	5	14.5	17	10	9	6	9	7'-6	4	6	20	4	12	11	4	11	6	4	12	13	4	11	6	8	13'-4	5	6	6'-3	2'-7	3'-8	5	13'-4	8	6	13'-10	5	6	8'-5	2'-7	5'-10	5	13'-10	0.647	0.782	0.285	1.714	277.79	
26-30	12	5	16.5	18.5	10.5	6	4	6	7'-10	4	6	20	4	12	11	4	11	6	4	12	13	4	11	6	9	13'-5	5	6	6'-5	2'-8	3'-9	5	13'-5	9	6	13'-11	5	6	8'-8	2'-8	6'-0	5	13'-11	0.736	0.852	0.301	1.889	311.55	
31-35	12	5	18	20.5	11.5	9	4	12	8'-1	4	6	20	4	12	11	4	14	6	4	12	13	4	12	6	9	13'-7	6	6	7'-6	3'-2	4'-4	6	13'-7	9	6	14'-1	6	6	9'-0	2'-10	6'-2	6	14'-1	0.812	0.952	0.329	2.093	341.39	
36-40	12	5	19.5	22	12	9	6	9	8'-4	4	6	20	4	12	11	4	12	6	5	12	13	4	13	6	9	13'-8	5	6	7'-0	2'-11	4'-1	5	13'-8	9	6	14'-2	5	6	9'-3	3'-0	6'-3	5	14'-2	0.883	1.026	0.344	2.253	337.53	
41-45	12	5	21	23.5	12.5	9	6	9	8'-7	4	6	20	4	12	11	4	13	6	5	12	13	4	13	6	9	13'-9	5	6	7'-3	3'-1	4'-2	5	13'-9	9	6	14'-3	5	6	9'-6	3'-1	6'-5	5	14'-3	0.954	1.100	0.358	2.412	341.82	
46-50	12	5	22.5	25	13.5	9	6	9	8'-10	4	6	20	5	12	11	4	13	6	5	12	13	4	14	6	9	13'-11	5	6	7'-7	3'-3	4'-4	5	13'-11	9	6	14'-5	5	6	9'-10	3'-4	6'-6	5	14'-5	1.034	1.182	0.386	2.602	351.95	
51-55	12	5	24	26	14	9	6	9	9'-1	4	6	20	5	12	11	4	14	6	5	12	13	4	14	6	10	14'-0	5	6	7'-9	3'-4	4'-5	5	14'-0	10	6	14'-6	5	6	10'-0	3'-5	6'-7	5	14'-6	1.107	1.236	0.400	2.743	407.71	



- Notes:**
- Dimensions listed on this sheet to be used in conjunction with Sheet RCB G3-20.
 - The k2 and m2 bars horizontal legs may lap in low fill situations.
 - Fill, dimensions "S" and "H" are in feet.
 - Dimensions "A", "B", "C", "D", and "Sp." listed in the bar list are in inches.
 - Dimensions "L", "H", "V" are in feet and inches.

LATEST REVISION DATE	APPROVED BY BRIDGE ENGINEER	Standard Design Single Reinforced Concrete Box Culverts July, 2020
Culvert Barrel Details		RCB 12-5-20
12' x 5' Barrel Sections		

ENGLISHLRFDDESIGNEDSINGLECULVERTS.DGN - RCB 12-5-20 - THIS SHEET ISSUED 07-2020.