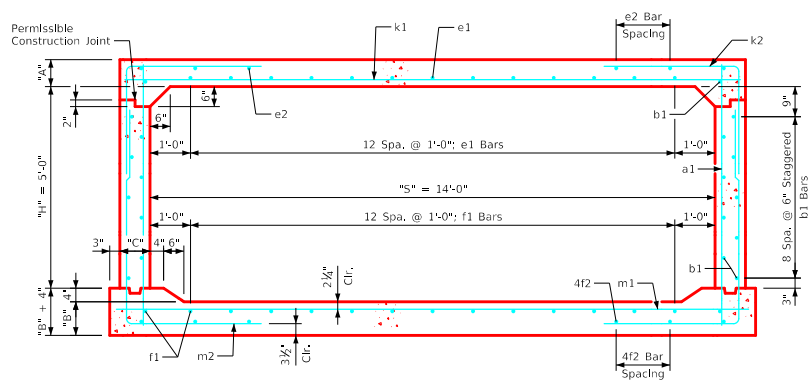
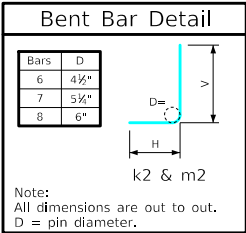


Variable Dimensions and Quantities for 14' x 5' Barrel Sections

Dimensions										Bar List																		Quantities																						
Fill	S	H	A	B	C	D	a1		b1			e1			e2			f1		f2		k1			k2			k9			m1		m2			m9		Concrete (CY/FT)				Steel (LB/FT)								
0	1	2	3-5	6-8	9-10	11-13	14-16	Size	Sp.	L	Size	Sp.	No.	Size	Sp.	No.	Size	Sp.	No.	Size	Sp.	No.	Size	Sp.	L	Size	Sp.	L	Size	Sp.	L	Size	Sp.	L	Size	Sp.	L	Slab	Floor	Walls	Total									
0	14	5	14	14	9	9	4	5	12	7'-3	4	6	20	5	12	13	4	15	6	4	12	15	4	13	8	7	9	15'-2	6	9	7'-1	3'-1	4'-0	6	15'-2	7	9	15'-8	6	9	9'-7	4'-0	5'-7	6	15'-8	0.702	0.728	0.257	1.687	221.58
1	14	5	13.5	14	9	9	4	9	7'-2	4	6	20	5	12	13	4	16	6	4	12	15	4	12	8	7	9	15'-2	6	9	7'-4	3'-4	4'-0	6	15'-2	7	9	15'-8	6	9	9'-4	3'-9	5'-7	6	15'-8	0.463	0.555	0.257	1.663	218.89	
2	14	5	9	10.5	9	9	4	12	6'-6	4	6	20	6	12	13	4	13	8	4	12	15	4	14	8	7	6	15'-2	6	6	7'-10	3'-11	3'-11	6	15'-2	7	6	15'-8	6	6	9'-5	4'-1	5'-4	6	15'-8	0.463	0.555	0.257	1.275	297.16	
3-5	14	5	8.5	10.5	9	9	4	12	6'-6	4	6	20	4	12	13	4	13	8	4	12	15	4	13	8	7	6	15'-2	7	6	7'-10	3'-11	3'-11	7	15'-2	7	6	15'-8	6	6	9'-2	3'-10	5'-4	6	15'-8	0.439	0.555	0.257	1.251	302.53	
6-8	14	5	9	11.5	9	9	4	12	6'-7	4	6	20	4	12	13	4	13	8	4	12	15	4	18	6	7	6	15'-2	7	6	7'-10	3'-11	3'-11	7	15'-2	7	6	15'-8	6	6	9'-0	3'-7	5'-5	6	15'-8	0.463	0.604	0.257	1.324	300.32	
9-10	14	5	10	12.5	9	9	4	12	6'-9	4	6	20	4	12	13	4	17	6	4	12	15	4	15	6	8	6	15'-2	7	6	7'-5	3'-5	4'-0	7	15'-2	8	6	15'-8	6	6	8'-8	3'-2	5'-6	6	15'-8	0.511	0.654	0.257	1.422	332.87	
11-13	14	5	11.5	13.5	9	9	4	12	7'-0	4	6	20	4	12	13	4	15	6	4	12	15	4	14	6	8	6	15'-2	8	9	7'-7	3'-1	4'-6	8	15'-2	8	6	15'-8	8	9	8'-7	3'-0	5'-7	8	15'-8	0.583	0.703	0.257	1.543	340.87	
14-16	14	5	12.5	14	9.5	9	4	12	7'-1	4	6	20	4	12	13	4	12	6	4	12	15	4	13	6	8	6	15'-3	6	6	6'-8	2'-9	3'-11	6	15'-3	8	6	15'-9	7	6	8'-6	2'-11	3'-7	7	15'-9	0.635	0.733	0.271	1.639	331.03	



14' x 5' Barrel Sections

Notes:

1. Dimensions listed on this sheet to be used in conjunction with Sheet RCB G3-20.
2. The k2 and m2 bars horizontal legs may lap in low fill situations.
3. Fill, dimensions "S" and "H" are in feet.
4. Dimensions "A", "B", "C", "D", and "Sp." listed in the bar list are in inches.
5. Dimensions "L", "H", "V" are in feet and inches.

LATEST REVISION DATE	APPROVED BY BRIDGE ENGINEER	Standard Design Single Reinforced Concrete Box Culverts July, 2020
Culvert Barrel Details 14' x 5' Barrel Sections		RCB 14-5-20