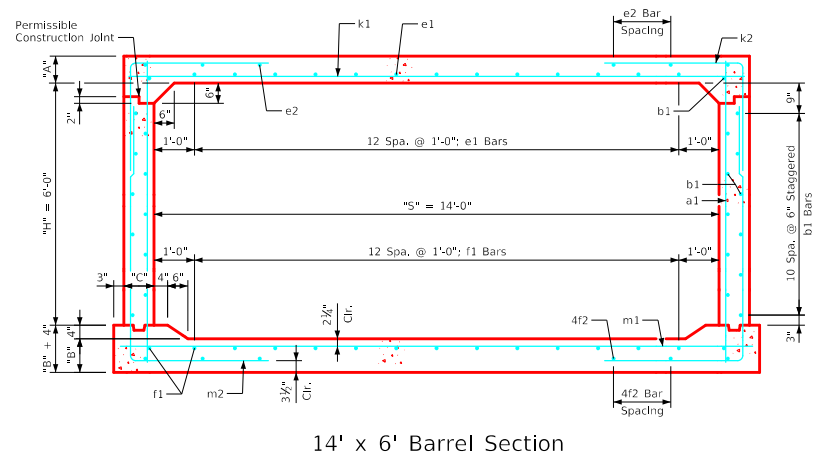
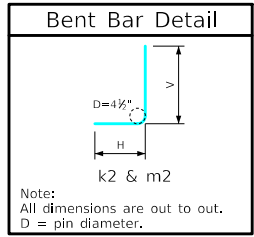


Variable Dimensions and Quantities for 14' x 6' Barrel Sections

Dimensions										Bar List																		Quantities																					
Fill	S	H	A	B	C	D	a1		b1			e1			e2			f1		f2		k1			k2			k9			m1		m2			m9			Concrete (CY/FT)				Steel (LB/FT)						
0	1	2	3-5	6-8	9-10	11-13	14-16	Size	Sp.	L	Size	Sp.	No.	Size	Sp.	No.	Size	Sp.	No.	Size	Sp.	No.	Size	Sp.	L	Size	Sp.	L	Size	Sp.	L	Size	Sp.	L	Size	Sp.	L	Slab	Floor	Walls	Total								
0	14	6	14	14	9	9	4	9	8'-3"	4	6	24	5	12	13	4	16	6	4	12	15	4	13	8	6	6	15'-2"	6	9	7'-4"	3'-4"	4'-0"	6	15'-2"	7	9	15'-8"	6	9	10'-7"	4'-0"	6'-7"	6	15'-8"	0.702	0.728	0.313	1.743	231.66
1	14	6	13.5	14	9	9	4	9	8'-2"	4	6	24	5	12	13	4	17	6	4	12	15	4	13	8	6	6	15'-2"	6	9	7'-5"	3'-5"	4'-0"	6	15'-2"	7	9	15'-8"	6	9	10'-5"	3'-10"	6'-7"	6	15'-8"	0.678	0.728	0.313	1.719	231.13
2	14	6	9	10.5	9	9	4	12	7'-6"	4	6	24	6	12	13	4	13	8	4	12	15	4	14	8	7	6	15'-2"	6	6	8'-0"	4'-0"	4'-0"	6	15'-2"	7	6	15'-8"	6	6	10'-5"	4'-1"	6'-4"	6	15'-8"	0.463	0.555	0.313	1.331	308.26
3-5	14	6	8.5	10.5	9	9	4	12	7'-6"	4	6	24	4	12	13	4	13	8	4	12	15	4	13	8	7	6	15'-2"	6	6	7'-10"	3'-11"	3'-11"	6	15'-2"	7	6	15'-8"	6	6	10'-3"	3'-11"	6'-4"	6	15'-8"	0.439	0.555	0.313	1.307	295.53
6-8	14	6	9.5	12.5	9	9	4	12	7'-9"	4	6	24	4	12	13	4	18	6	4	12	15	4	16	6	7	6	15'-2"	6	6	7'-2"	3'-7"	3'-7"	6	15'-2"	7	6	15'-8"	6	6	9'-9"	3'-3"	6'-6"	6	15'-8"	0.487	0.654	0.313	1.454	286.13
9-10	14	6	10	12.5	9	9	4	12	7'-9"	4	6	24	4	12	13	4	12	8	4	12	15	4	15	6	8	6	15'-2"	6	6	7'-4"	3'-8"	3'-8"	6	15'-2"	8	6	15'-8"	6	6	9'-8"	3'-2"	6'-6"	6	15'-8"	0.511	0.654	0.313	1.478	327.05
11-13	14	6	11.5	14	9	9	4	12	8'-0"	4	6	24	4	12	13	4	14	6	4	12	15	4	13	6	8	6	15'-2"	6	6	6'-9"	2'-11"	3'-10"	6	15'-2"	8	6	15'-8"	6	6	9'-4"	2'-9"	6'-7"	6	15'-8"	0.583	0.728	0.313	1.624	320.50
14-16	14	6	12.5	15	9.5	9	4	12	8'-2"	4	6	24	4	12	13	4	13	6	4	12	15	4	12	6	8	6	15'-3"	6	6	6'-9"	2'-10"	3'-11"	6	15'-3"	8	6	15'-9"	6	6	9'-5"	2'-9"	6'-8"	6	15'-9"	0.635	0.782	0.330	1.747	322.13



- Notes:**
1. Dimensions listed on this sheet to be used in conjunction with Sheet RCB G3-20.
 2. The k2 and m2 bars horizontal legs may lap in low fill situations.
 3. Fill, dimensions "S" and "H" are in feet.
 4. Dimensions "A", "B", "C", "D", and "Sp." listed in the bar list are in inches.
 5. Dimensions "L", "H", "V" are in feet and inches.

LATEST REVISION DATE	 APPROVED BY BRIDGE ENGINEER	 Standard Design Single Reinforced Concrete Box Culverts July, 2020	
		Culvert Barrel Details 14' x 6' Barrel Sections	RCB 14-6-20

ENGLISHLRFD\SIGNEDSINGLECULVERTS.DGN - RCB 14-6-20 - THIS SHEET ISSUED 07-2020.