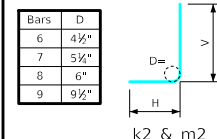


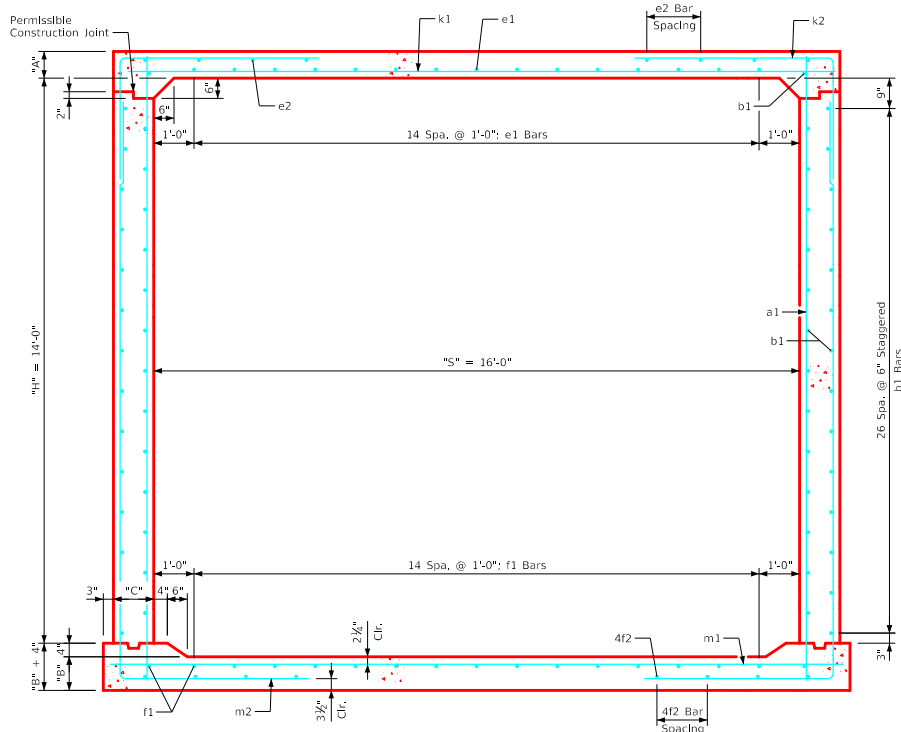
Variable Dimensions and Quantities for 16' x 14' Barrel Sections

Dimensions										Bar List																		Quantities																					
Fill	S	H	A	B	C	D	a1		b1			e1			e2			f1			f2			k1			k2			k9			m1		m2			m9			Concrete (CY/FT)				Steel (LB/FT)				
							Size	Sp.	L	Size	Sp.	No.	Size	Sp.	No.	Size	Sp.	No.	Size	Sp.	No.	Size	Sp.	L	Size	Sp.	L	H	V	Size	L	Size	Sp.	L	Size	Sp.	L	H	V	Size	L	Slab	Floor	Walls	Total				
0	16	14	15	16	14	9	4	9	16'-6"	4	6	56	5	12	15	5	18	12	4	12	17	4	15	12	6	6	18'-0"	6	6	14'-8"	10'-7"	4'-1"	-	-	6	6	18'-6"	6	6	22'-4"	7'-7"	14'-9"	6	18'-6"	0.894	0.975	1.178	3.047	451.58
1	16	14	14	15.5	14	9	5	12	16'-4"	4	6	56	5	12	15	4	18	12	4	12	17	4	16	12	6	6	18'-0"	6	6	14'-3"	10'-3"	4'-0"	-	-	8	6	18'-6"	6	6	22'-6"	7'-9"	14'-9"	6	18'-6"	0.837	0.946	1.178	2.961	463.55
2	16	14	9.5	11.5	14	9	4	9	15'-8"	4	6	56	5	12	15	4	17	10	4	12	17	4	15	10	7	6	18'-0"	7	6	10'-8"	6'-8"	4'-0"	7	18'-0"	7	6	18'-6"	7	6	20'-6"	6'-1"	14'-5"	7	18'-6"	0.583	0.714	1.178	2.475	518.50
3-5	16	14	9	12	14	9	4	9	15'-8"	4	6	56	4	12	15	4	15	10	4	12	17	4	14	10	7	6	18'-0"	9	9	11'-4"	6'-3"	5'-1"	9	18'-0"	7	6	18'-6"	8	9	20'-3"	5'-10"	14'-5"	8	18'-6"	0.555	0.743	1.178	2.476	514.92
6-8	16	14	10	12.5	14	9	4	12	15'-9"	4	6	56	4	12	15	4	17	8	4	12	17	4	17	8	8	6	18'-0"	7	6	9'-5"	5'-5"	4'-0"	7	18'-0"	8	6	18'-6"	7	6	19'-11"	5'-5"	14'-6"	7	18'-6"	0.611	0.772	1.178	2.561	534.84
9-10	16	14	11	13.5	14	9	4	12	15'-11"	4	6	56	4	12	15	4	16	8	4	12	17	4	16	8	8	6	18'-0"	7	6	9'-3"	5'-2"	4'-1"	7	18'-0"	8	6	18'-6"	7	6	19'-9"	5'-2"	14'-7"	7	18'-6"	0.668	0.830	1.178	2.676	532.32
11-13	16	14	13	15.5	14	6	4	6	16'-3"	4	6	56	4	12	15	4	16	8	4	12	17	4	16	8	8	6	18'-0"	8	9	10'-0"	5'-0"	5'-0"	8	18'-0"	9	6	18'-6"	8	9	19'-9"	5'-0"	14'-9"	8	18'-6"	0.781	0.946	1.178	2.905	563.82
14-16	16	14	14.5	18	15	9	4	12	16'-7"	4	6	56	4	12	15	4	15	8	4	12	17	4	15	8	9	6	18'-2"	7	6	9'-8"	4'-10"	4'-10"	7	18'-2"	9	6	18'-8"	7	6	19'-11"	5'-0"	14'-11"	7	18'-8"	0.876	1.103	1.262	3.241	594.34

Bent Bar Detail



Note:
All dimensions are out to out.
D = pin diameter.



16' x 14' Barrel Section

Notes:

- Dimensions listed on this sheet to be used in conjunction with Sheet RCB G3-20.
- The k2 and m2 bars horizontal legs may lap in low fill situations.
- Fill, dimensions "S" and "H" are in feet.
- Dimensions "A", "B", "C", "D", and "Sp." listed in the bar list are in inches.
- Dimensions "L", "H", "V" are in feet and inches.

LATEST REVISION DATE	 APPROVED BY BRIDGE ENGINEER	 Standard Design Single Reinforced Concrete Box Culverts July, 2020	RCB 16-14-20
		Culvert Barrel Details 16' x 14' Barrel Sections	