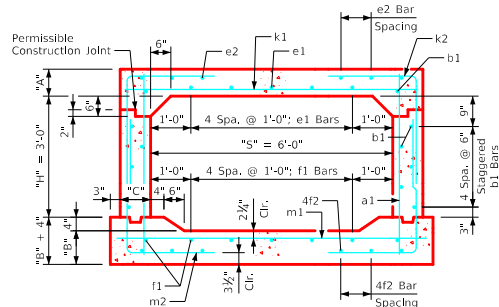
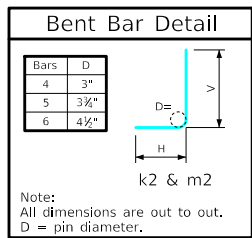


### Variable Dimensions and Quantities for 6' x 3' Barrel Sections

Dimensions										Bar List																		Quantities																					
Fill	S	H	A	B	C	D	a1		b1		e1		e2		f1		f2		k1			k2			k9		m1		m2			m9				Concrete (CY/FT)				Steel (LB/FT)									
							Size	Sp.	L	Size	Sp.	No.	Size	Sp.	No.	Size	Sp.	No.	Size	Sp.	L	Size	Sp.	L	Size	Sp.	L	Size	Sp.	L	Size	Sp.	L	Size	Sp.	L	Slab	Floor	Walls	Total									
0	6	3	10.5	10	9	9	4	12	4'-7"	4	6	12	4	12	5	4	10	6	4	12	7	4	16	6	4	6	7'-2"	4	6	5'-3"	2'-4"	2'-11"	4	7'-2"	4	6	7'-8"	4	6	6'-6"	3'-3"	3'-3"	4	7'-8"	0.275	0.284	0.146	0.705	82.55
1	6	3	9	10	9	9	4	12	4'-6"	4	6	12	4	12	5	4	10	6	4	12	7	4	11	6	4	6	7'-2"	4	6	5'-1"	2'-3"	2'-10"	4	7'-2"	4	6	7'-8"	4	6	5'-9"	2'-6"	3'-3"	4	7'-8"	0.241	0.284	0.146	0.671	79.95
2	6	3	8	10	9	9	4	9	4'-5"	4	6	12	4	12	5	4	10	6	4	12	7	4	10	6	4	6	7'-2"	5	12	5'-4"	2'-3"	3'-1"	5	7'-2"	4	6	7'-8"	5	12	5'-7"	2'-4"	3'-3"	5	7'-8"	0.218	0.284	0.146	0.648	77.24
3	6	3	8	10	9	9	4	9	4'-5"	4	6	12	4	12	5	4	10	6	4	12	7	4	9	6	4	6	7'-2"	5	12	5'-4"	2'-3"	3'-1"	5	7'-2"	4	6	7'-8"	5	12	5'-5"	2'-2"	3'-3"	5	7'-8"	0.218	0.284	0.146	0.648	76.84
4-6	6	3	8	10	9	9	4	9	4'-5"	4	6	12	4	12	5	4	10	6	4	12	7	4	9	6	4	9	7'-2"	5	12	5'-4"	2'-3"	3'-1"	5	7'-2"	4	6	7'-8"	5	12	5'-5"	2'-2"	3'-3"	5	7'-8"	0.218	0.284	0.146	0.648	73.82
7-10	6	3	8	10	9	9	4	9	4'-5"	4	6	12	4	12	5	4	10	6	4	12	7	4	18	4	4	6	7'-2"	5	12	5'-4"	2'-3"	3'-1"	5	7'-2"	4	6	7'-8"	5	12	5'-4"	2'-1"	3'-3"	5	7'-8"	0.218	0.284	0.146	0.648	75.34
11-15	6	3	8	10	9	9	4	9	4'-5"	4	6	12	4	12	5	4	10	6	4	12	7	4	18	4	4	6	7'-2"	5	12	5'-4"	2'-3"	3'-1"	5	7'-2"	4	6	7'-8"	5	12	5'-4"	2'-1"	3'-3"	5	7'-8"	0.218	0.284	0.146	0.648	75.34
16-20	6	3	8	10	9	9	4	9	4'-5"	4	6	12	4	12	5	4	17	4	4	12	7	4	16	4	5	6	7'-2"	4	6	4'-9"	2'-0"	2'-9"	4	7'-2"	5	6	7'-8"	4	6	5'-2"	1'-11"	3'-3"	4	7'-8"	0.218	0.284	0.146	0.648	87.89
21-25	6	3	8	10	9	6	4	6	4'-5"	4	6	12	4	12	5	4	17	4	4	12	7	4	16	4	7	9	7'-2"	4	6	4'-9"	2'-0"	2'-9"	4	7'-2"	6	6	7'-8"	4	6	5'-2"	1'-11"	3'-3"	4	7'-8"	0.218	0.284	0.146	0.648	104.16
26-30	6	3	8.5	11	9	6	4	6	4'-6"	4	6	12	4	12	5	4	12	6	4	12	7	4	11	6	6	6	7'-2"	6	12	6'-2"	2'-7"	3'-7"	6	7'-2"	6	6	7'-8"	6	12	5'-9"	2'-5"	3'-4"	6	7'-8"	0.229	0.308	0.146	0.683	120.84
31-35	6	3	9.5	12	9	6	4	6	4'-8"	4	6	12	4	12	5	4	11	6	4	12	7	4	11	6	6	6	7'-2"	6	12	6'-2"	2'-6"	3'-8"	6	7'-2"	6	6	7'-8"	6	12	5'-10"	2'-5"	3'-5"	6	7'-8"	0.252	0.333	0.146	0.731	121.55
36-40	6	3	10.5	12.5	9	6	4	6	4'-10"	4	6	12	4	12	5	4	16	4	4	12	7	4	15	4	6	6	7'-2"	4	6	4'-10"	1'-11"	2'-11"	4	7'-2"	6	6	7'-8"	4	6	5'-4"	1'-10"	3'-6"	4	7'-8"	0.275	0.345	0.146	0.766	107.34
41-45	6	3	11	13	9	6	4	6	4'-11"	4	6	12	4	12	5	4	15	4	4	12	7	4	15	4	8	9	7'-2"	4	6	4'-10"	1'-10"	3'-0"	4	7'-2"	7	6	7'-8"	4	6	5'-4"	1'-10"	3'-6"	4	7'-8"	0.287	0.358	0.146	0.791	120.84
46-50	6	3	11.5	14	9	6	4	6	5'-0"	4	6	12	4	12	5	4	11	6	4	12	7	4	11	6	7	6	7'-2"	6	12	6'-3"	2'-5"	3'-10"	6	7'-2"	7	6	7'-8"	6	12	6'-0"	2'-5"	3'-7"	6	7'-8"	0.299	0.382	0.146	0.827	139.55
51-55	6	3	12	14.5	9	6	4	6	5'-1"	4	6	12	4	12	5	4	11	6	4	12	7	4	11	6	7	6	7'-2"	6	12	6'-3"	2'-5"	3'-10"	6	7'-2"	7	6	7'-8"	6	12	6'-1"	2'-5"	3'-8"	6	7'-8"	0.310	0.395	0.146	0.851	140.03



6' x 3' Barrel Section

- Notes:**
- Dimensions listed on this sheet to be used in conjunction with Sheet RCB G3-20.
  - The k2 and m2 bars horizontal legs may lap in low fill situations.
  - Fill dimensions "S" and "H" are in feet.
  - Dimensions "A", "B", "C", "D", and "Sp." listed in the bar list are in inches.
  - Dimensions "L", "H", "V" are in feet and inches.

LATEST REVISION DATE	 APPROVED BY BRIDGE ENGINEER	Standard Design <b>Single Reinforced Concrete Box Culverts</b> July, 2020	
		<b>Culvert Barrel Details</b> 6' x 3' Barrel Sections	RCB 6-3-20
		IOWADOT Highway Division Standard Design Single Reinforced Concrete Box Culverts July, 2020	

ENGLISHLRFDDESIGNEDSINGLECULVERTS.DGN - RCB 6-3-20 - THIS SHEET ISSUED 07-2020.