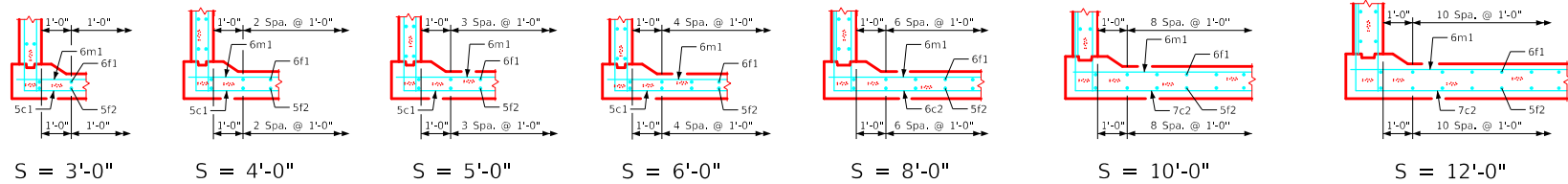
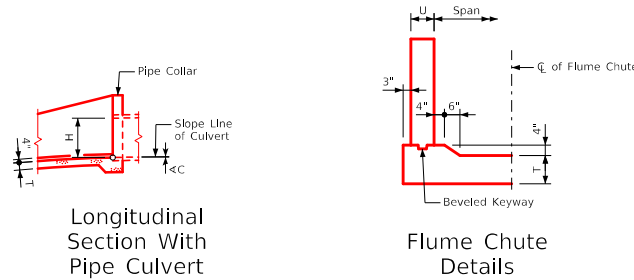
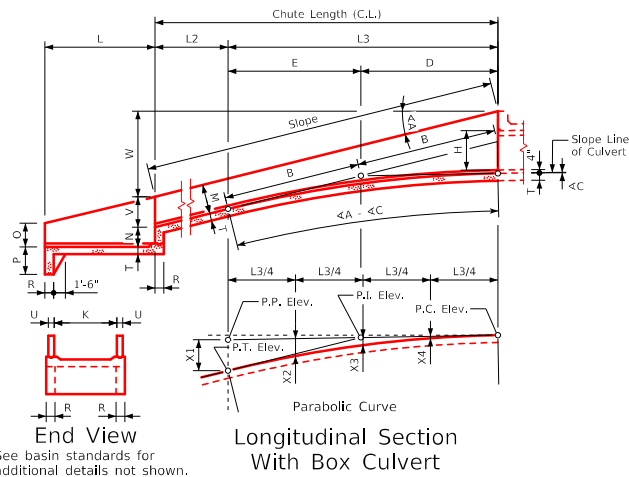


Flume Wall Sections  
( Normal to Flowline )



Flume Floor Half Sections  
( Normal to Flowline )

Note:  
Mix and match detailed floors and detailed walls for appropriate flume size. This Standard Includes connection to a RCB Culvert (Typ.). Connection to concrete pipe shall require case by case design and is not part of this Standard.



Note: See sheet RCF 04-20 for additional span and height details.

LATEST REVISION DATE	APPROVED BY BRIDGE ENGINEER		
		Standard Design Single Reinforced Concrete Box Culverts December, 2020	
		Reinforced Concrete Flume Details Details	RCF 03-20