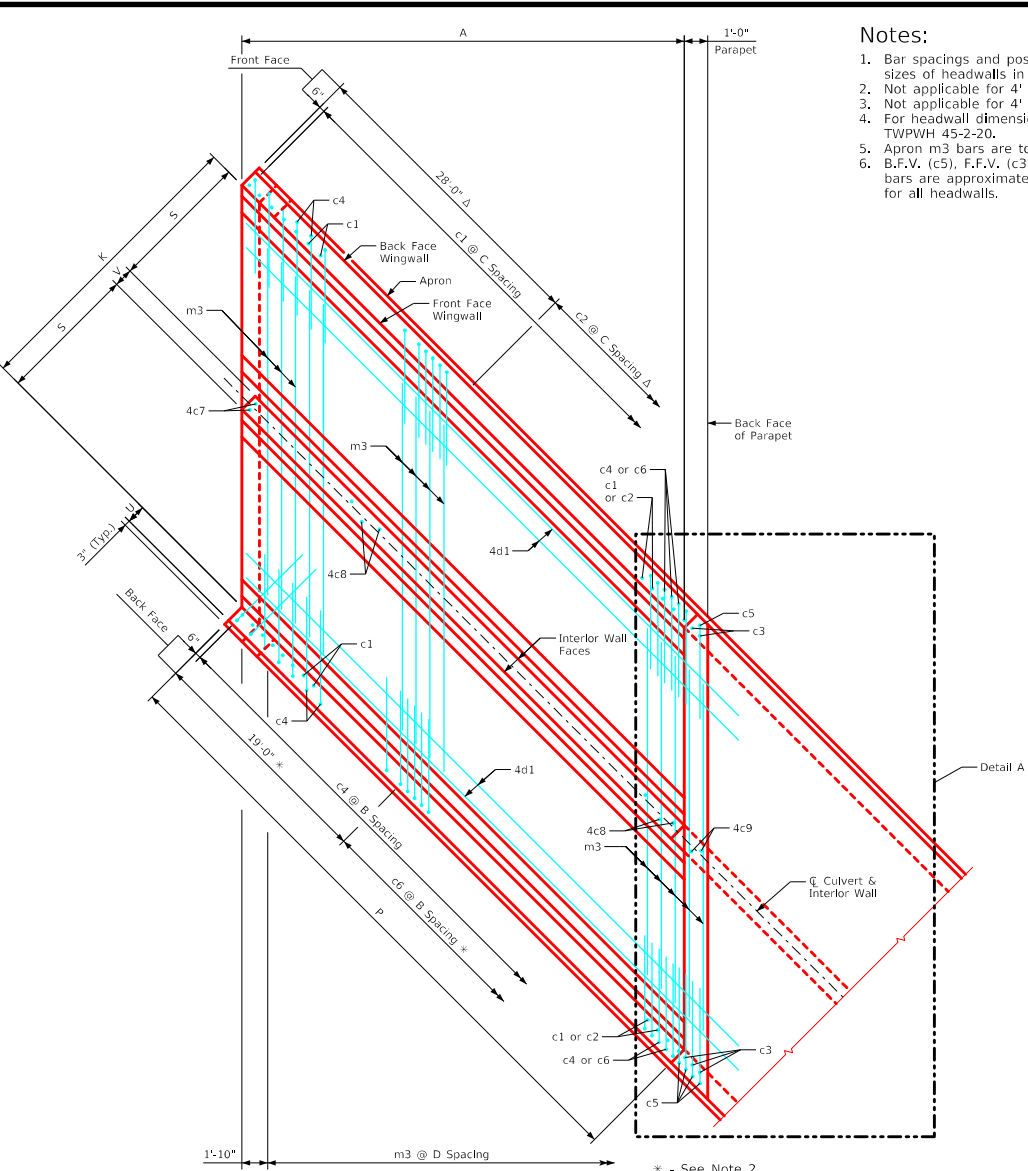


ENGLISHRFD\DESIGN\CULVERTS.DGN - TWPWH 45-5-20 - THIS SHEET ISSUED 07-2020.

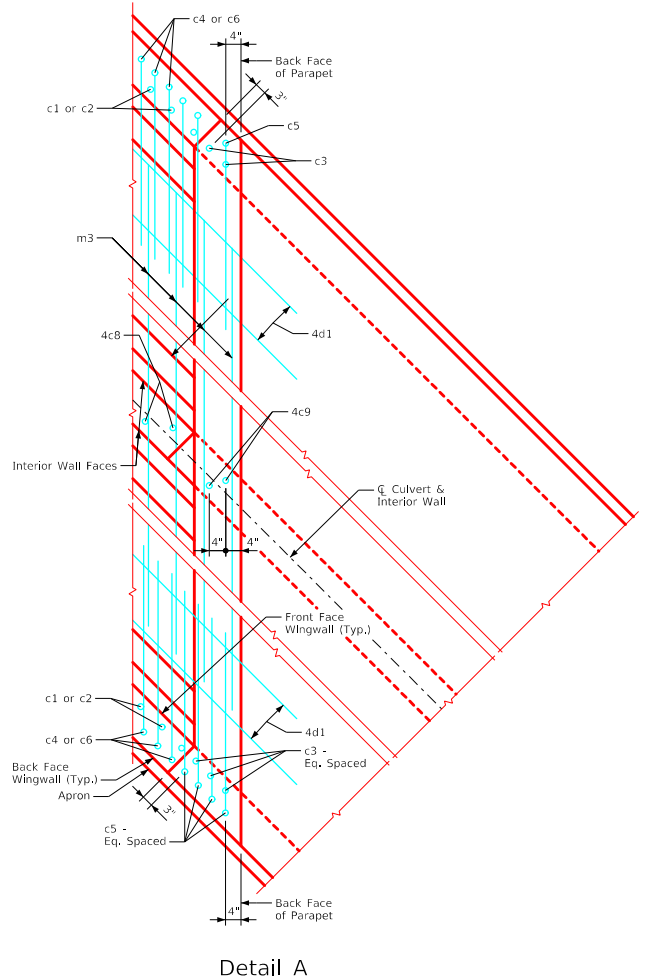


Plan View - Bottom Apron Reinforcing  
(Curtain Wall Reinforcing not shown. See Sheet TWPWH 45-2-20)

\* - See Note 2  
Δ - See Note 3

Notes:

1. Bar spacings and positions shown are similar for all sizes of headwalls in this standard.
2. Not applicable for 4' thru 5' height headwalls.
3. Not applicable for 4' thru 8' height headwalls.
4. For headwall dimensions and bar spacing see Sheet TWPWH 45-2-20.
5. Apron m3 bars are to be centered on  $\bar{C}$  culvert.
6. B.F.V. (c5), F.F.V. (c3) and interior wall both F.V. (c9) bars are approximately 4" from the back of parapet for all headwalls.



Detail A

LATEST REVISION DATE	APPROVED BY BRIDGE ENGINEER		
		Standard Design - Twin Reinforced Concrete Box Culverts <b>Parallel Wing Headwalls</b> July, 2020	
		Bottom Apron Reinforcing 45° Skew	TWPWH 45-5-20