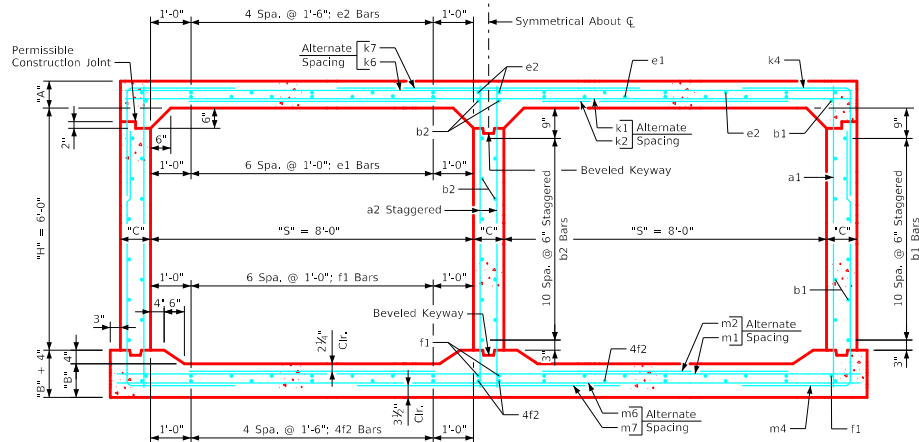
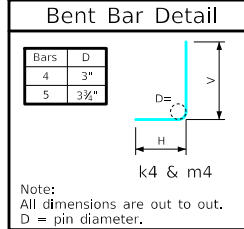


Variable Dimensions and Quantities for Twin 8' x 6' Barrel Sections

Dimensions													Bar List																																											
Fill	S	H	A	B	C	D	E	U	W	X	Z	a1			a2			b1			b2			e1			e2			f1			f2			k1			k2			k4			k6			k7			k9					
												Size	Sp.	L	Size	Sp.	L	Size	Sp.	No.	Size	Sp.	No.	Size	Sp.	No.	Size	Sp.	No.	Size	Sp.	No.	Size	Sp.	No.	Size	Sp.	No.	Size	Sp.	No.	Size	Sp.	No.	Size	Sp.	No.	Size	Sp.	No.	Size	Sp.	No.	Size	Sp.	No.
0	8	6	13	10.5	9	9	9	0'-0	5'-2	2'-0	5'-5	4	9	7'-10	6	9	7'-10	4	6	24	4	6	13	4	12	14	4	18	14	4	12	18	4	18	14	4	12	17'-11	4	12	8'-11	4	6	8'-6	5'-5	3'-1	4	12	17'-11	4	12	10'-4	4	4.5	17'-11	
1	8	6	11	10	9	9	9	0'-0	5'-5	2'-2	5'-7	4	9	7'-8	6	9	7'-8	4	6	24	4	6	13	4	12	14	4	18	14	4	12	18	4	18	14	5	18	17'-11	5	18	8'-11	4	6	8'-2	5'-2	3'-0	4	18	17'-11	5	18	10'-10	5	4.5	17'-11	
2	8	6	8	10	9	9	9	1'-2	5'-1	1'-11	4'-0	4	9	7'-5	6	9	7'-5	4	6	24	4	6	13	4	12	14	4	18	14	4	12	18	4	18	14	5	12	17'-11	4	12	7'-0	4	6	6'-2	3'-1	3'-1	5	18	17'-11	6	18	10'-2	6	4.5	17'-11	
3	8	6	8	10	9	9	9	1'-7	3'-10	2'-3	3'-2	4	12	7'-5	6	9	7'-5	4	6	24	4	6	13	4	12	14	4	18	14	4	12	18	4	18	14	6	18	17'-11	5	18	6'-3	4	6	5'-8	2'-10	2'-10	4	12	17'-11	4	12	7'-8	4	4.5	17'-11	
4	8	6	8	10	9	9	9	1'-4	3'-4	1'-8	3'-0	4	9	7'-5	6	9	7'-5	4	6	24	4	6	13	4	12	14	4	18	14	4	12	18	4	18	14	4	12	17'-11	4	12	6'-10	5	12	6'-2	3'-1	3'-1	4	12	17'-11	4	12	6'-8	4	4.5	17'-11	
5-7	8	6	8	10	9	9	9	1'-8	3'-2	1'-9	3'-1	4	12	7'-5	6	9	7'-5	4	6	24	4	6	13	4	12	14	4	18	14	4	12	18	4	18	14	4	12	17'-11	4	12	6'-4	4	6	5'-6	2'-9	2'-9	4	12	17'-11	5	12	6'-4	5	4.5	17'-11	
8-10	8	6	8	10	9	9	9	2'-0	2'-11	2'-5	2'-11	4	12	7'-5	6	9	7'-5	4	6	24	4	6	13	4	12	14	4	18	14	4	12	18	4	18	14	6	18	17'-11	5	18	5'-9	4	6	5'-6	2'-9	2'-9	5	12	17'-11	5	12	5'-10	5	4.5	17'-11	
11-13	8	6	8.5	11	9	9	9	2'-1	2'-10	2'-2	2'-11	4	12	7'-6	6	9	7'-6	4	6	24	4	6	13	4	12	14	4	18	14	4	12	18	4	18	14	5	12	17'-11	4	12	5'-7	4	6	5'-6	2'-9	2'-9	4	9	17'-11	5	9	5'-8	5	4.5	17'-11	
14-16	8	6	9.5	11.5	9	9	9	1'-9	3'-0	1'-7	3'-0	4	9	7'-8	6	9	7'-8	4	6	24	4	6	13	4	12	14	4	18	14	4	12	18	4	18	14	5	12	17'-11	4	12	6'-4	4	6	5'-2	2'-4	2'-10	5	12	17'-11	6	12	6'-0	6	4.5	17'-11	
17-19	8	6	10.5	13	9	9	9	1'-10	2'-11	1'-8	3'-3	4	12	7'-10	6	9	7'-10	4	6	24	4	6	13	4	12	14	4	18	14	4	12	18	4	18	14	5	12	17'-11	4	12	6'-5	4	6	5'-2	2'-3	2'-11	5	12	17'-11	6	12	5'-10	6	4.5	17'-11	
20-22	8	6	12	14.5	9	9	9	1'-5	3'-0	1'-7	3'-3	4	12	8'-1	6	9	8'-1	4	6	24	4	6	13	4	12	14	4	18	14	4	12	18	4	18	14	6	18	17'-11	5	18	7'-5	4	6	5'-4	2'-4	3'-0	5	12	17'-11	6	12	6'-0	6	4.5	17'-11	
23-25	8	6	13	15	9	9	9	1'-1	3'-1	1'-3	3'-2	4	12	8'-3	6	9	8'-3	4	6	24	4	6	13	4	12	14	4	18	14	4	12	18	4	18	14	4	9	17'-11	4	6	5'-6	2'-4	3'-2	5	12	17'-11	6	12	6'-2	6	4.5	17'-11				

Bar List													Quantities																											
Fill	Size	Sp.	L	Size	Sp.	L	Size	Sp.	L	H	V	Size	Sp.	L	Size	Sp.	L	Size	Sp.	L	Size	Sp.	L	Size	Sp.	L	Size	Sp.	L	Size	Sp.	L	Size	Sp.	L	Slab	Floor	Walls	Total	Steel (LB/FT)
0	5	12	18'-5	4	12	5'-9	4	6	11'-6	5'-2	6'-4	5	18	18'-5	5	18	10'-10	5	4.5	18'-5	0.789	0.667	0.465	1.921	241.66															
1	5	12	18'-5	4	12	5'-6	4	6	11'-3	5'-0	6'-3	4	18	18'-5	6	18	11'-2	6	4.5	18'-5	0.676	0.638	0.465	1.779	238.26															
2	5	12	18'-5	4	12	5'-10	4	6	9'-7	3'-4	6'-3	5	18	18'-5	6	18	8'-0	6	4.5	18'-5	0.507	0.638	0.465	1.610	240.13															
3	6	18	18'-5	5	18	5'-4	4	6	9'-0	2'-9	6'-2	4	12	18'-5	4	12	6'-4	4	4.5	18'-5	0.507	0.638	0.465	1.610	220.95															
4	4	12	18'-5	4	12	6'-4	5	12	9'-0	2'-9	6'-3	4	12	18'-5	4	12	6'-0	4	4.5	18'-5	0.507	0.638	0.465	1.610	203.63															
5-7	4	12	18'-5	4	12	6'-3	4	6	8'-10	2'-7	6'-3	5	18	18'-5	6	18	6'-2	6	4.5	18'-5	0.507	0.638	0.465	1.610	211.55															
8-10	5	12	18'-5	4	12	5'-0	4	6	8'-8	2'-5	6'-3	5	12	18'-5	5	12	5'-10	5	4.5	18'-5	0.507	0.638	0.465	1.610	235.26															
11-13	5	12	18'-5	4	12	5'-8	4	6	8'-8	2'-4	6'-4	4	9	18'-5	5	9	5'-10	5	4.5	18'-5	0.536	0.696	0.465	1.697	233.61															
14-16	5	12	18'-5	5	12	6'-9	4	6	8'-9	2'-4	6'-5	5	12	18'-5	6	12	6'-0	6	4.5	18'-5	0.592	0.725	0.465	1.782	253.05															
17-19	5	12	18'-5	4	12	6'-9	4	6	8'-9	2'-3	6'-6	5	18	18'-5	8	18	6'-6	8	4.5	18'-5	0.648	0.811	0.465	1.924	244.11															
20-22	5	12	18'-5	4	12	7'-4	4	6	9'-0	2'-4	6'-8	5	18	18'-5	8	18	6'-6	8	4.5	18'-5	0.733	0.898	0.465	2.096	249.05															
23-25	6	18	18'-5	6	18	7'-9	4	6	9'-1	2'-5	6'-8	5	12	18'-5	6	12	6'-4	6	4.5	18'-5	0.789	0.927	0.465	2.181	257.76															



Twin 8' x 6' Barrel Section

- Notes:**
- Dimensions listed on this sheet to be used in conjunction with Sheet TWRCB G3-20.
 - Fill, dimensions "S" and "H" are in feet.
 - Dimensions "A", "B", "C", "D", and "Sp." listed in the bar list are in inches.
 - Dimensions "L", "H", "V" are in feet and inches.

LATEST REVISION DATE	APPROVED BY BRIDGE ENGINEER	
		Standard Design Twin Reinforced Concrete Box Culverts July, 2020
		Culvert Barrel Details 8' x 6' Barrel Sections

TWRCB
8-6-20

ENGLISHLRFDDESIGNEDTWINCULVERTS.DGN - TWRCB 8-6-20 - THIS SHEET ISSUED 07-2020.