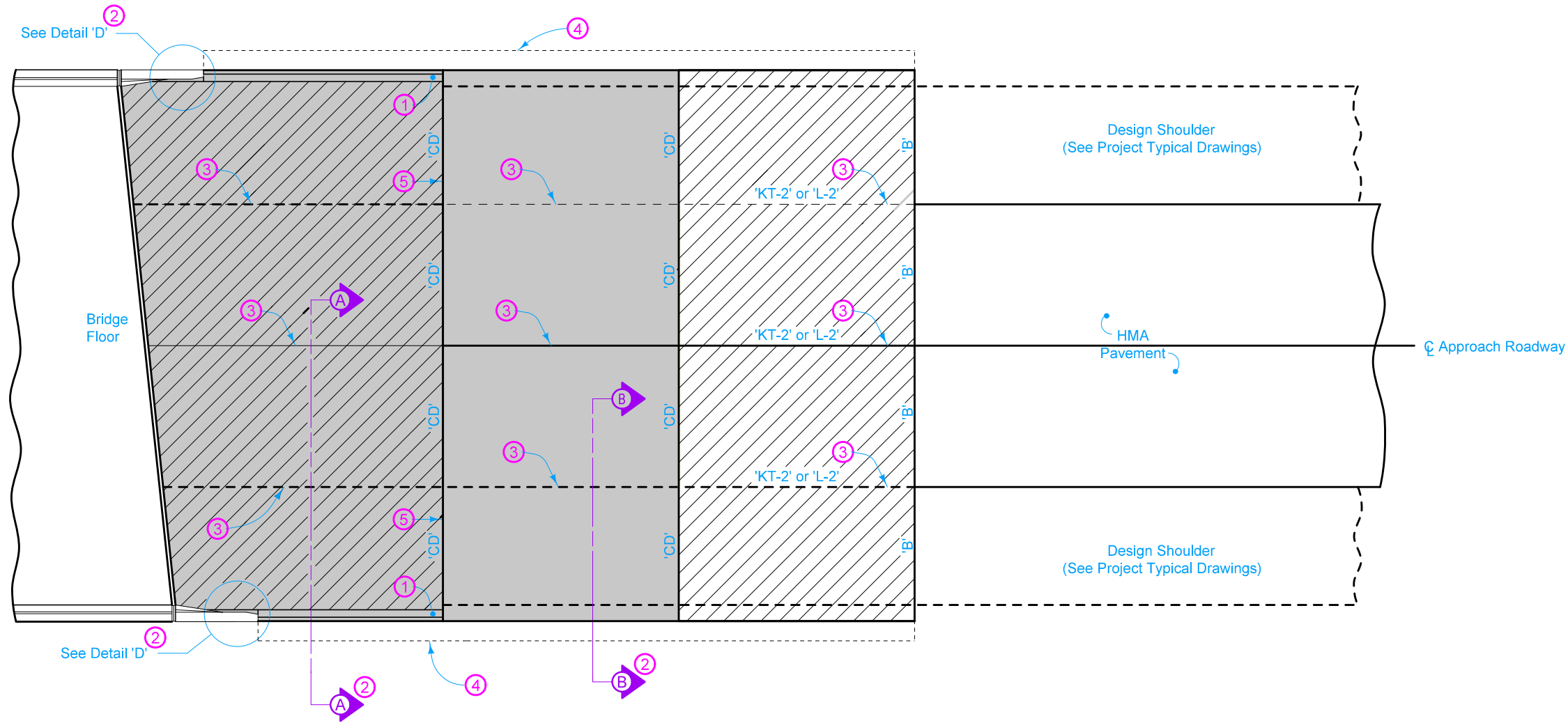


For joint details, see [PV-101](#).

- ① Build 4 inch Sloped Curb to end of Double Reinforced Section. Refer to PV-102 for curb and runout details.
- ② See [BR-201](#), [BR-202](#), [BR-203](#), or [BR-204](#).
- ③ Longitudinal Joint ([PV-101](#)):
 Single Pour - Saw cut joint per Detail B.
 Two Pours - Use 'KS-1' joint (Single Reinforced Section).
 Use 'KS-2' joint (Double Reinforced Section).
- ④ Polymer Grid and excavation limits of Modified Subbase 2 feet outside of pavement edge. See [BR-201](#), [BR-202](#), [BR-203](#), or [BR-204](#).
- ⑤ Place 'RD' joint where PCC shoulder. Place 'B' joint otherwise.



PLAN VIEW

Pay limits for contract item include the following areas:

- Double Reinforced Section
- Single Reinforced Section
- Non-Reinforced Section

	REVISION	
	2	10-18-22
STANDARD ROAD PLAN		BR-212
REVISIONS: Revised curb note.		SHEET 1 of 1
<small>APPROVED BY DESIGN METHODS ENGINEER</small>		
BRIDGE APPROACH (ABUTTING HMA PAVEMENT)		