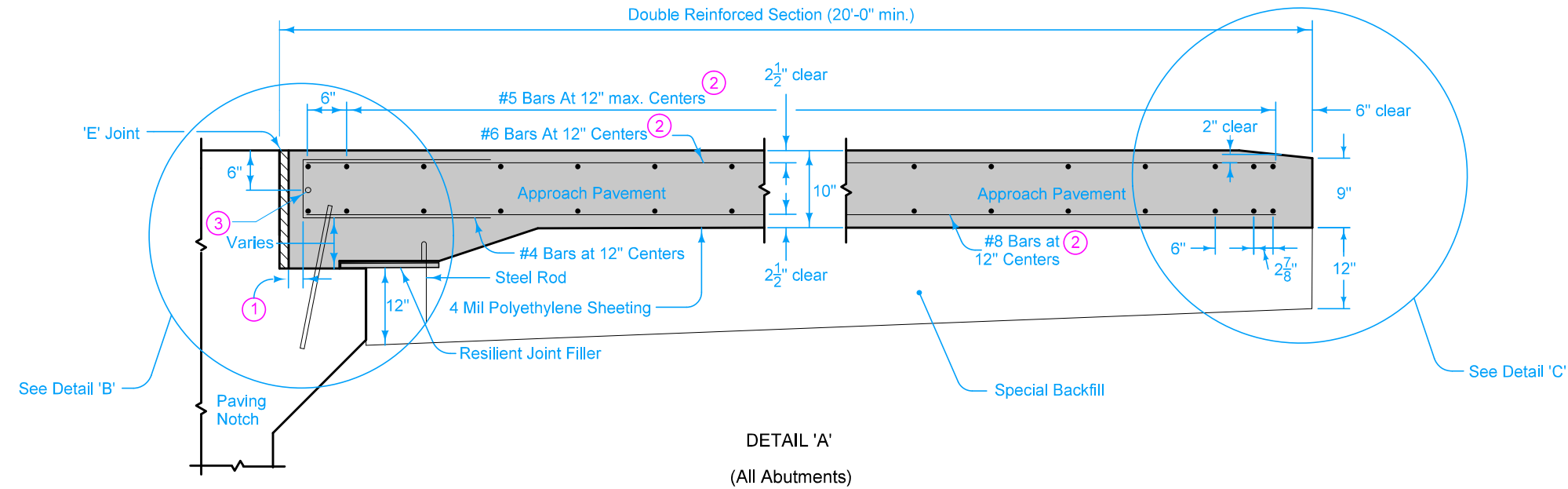


DESIGNER INFORMATION

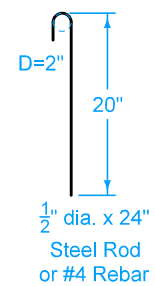
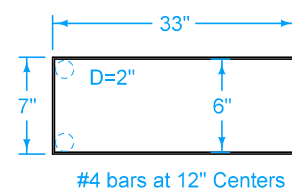
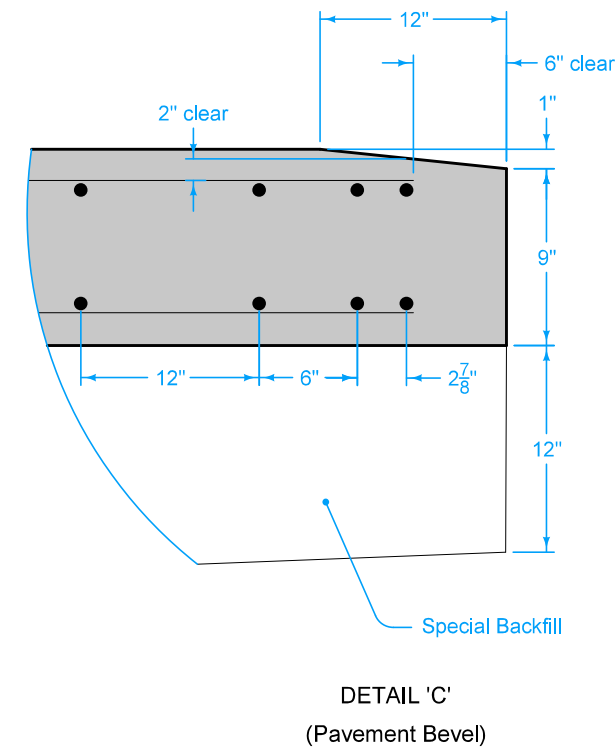
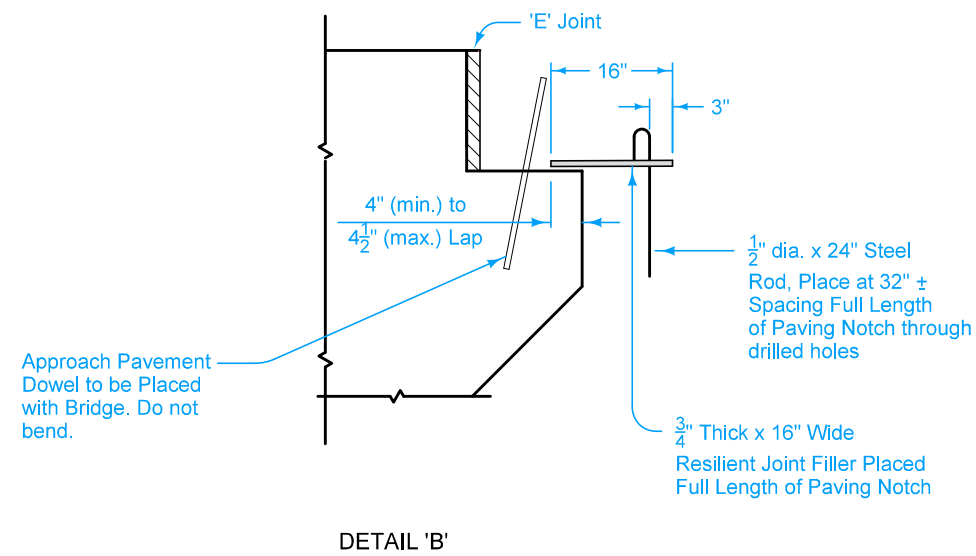
For joint details, refer to PV-101.

For curb details, see Detail 'F'.

All transverse bars are #5.



- ① 2" min. to 2 1/2" max. clear to bent bar.
- ② Minimum lap length: #5 Bars - 38"
#6 Bars - 45"
#8 Bars - 59"
- ③ If bridge is skewed, place additional #5 bar parallel to skewed face.

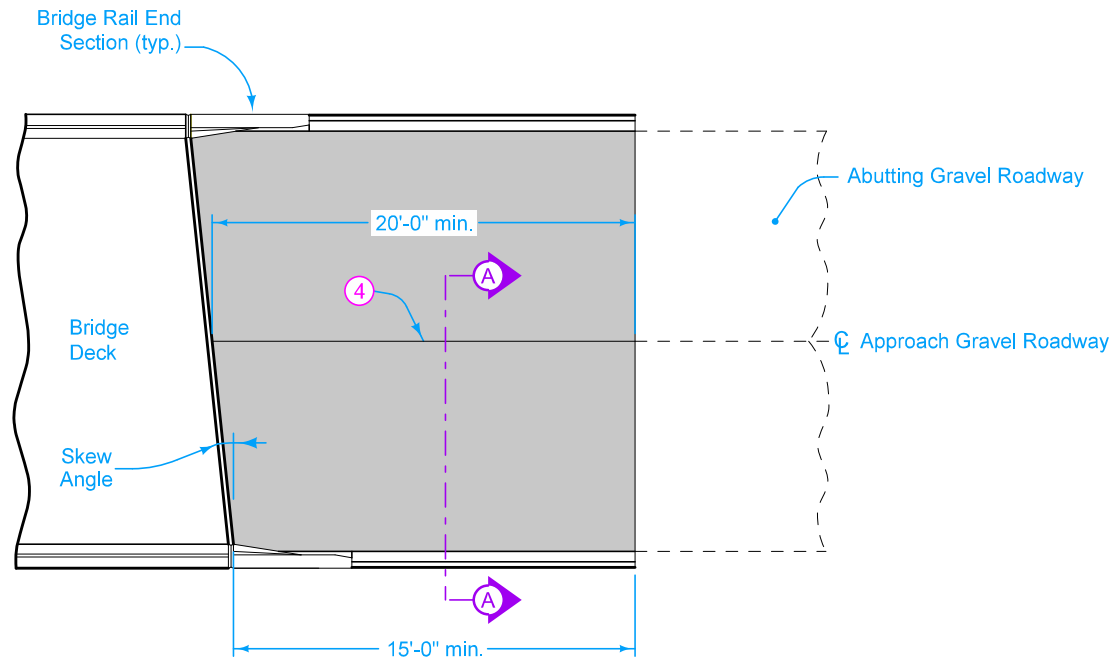


BENT BAR SHAPES

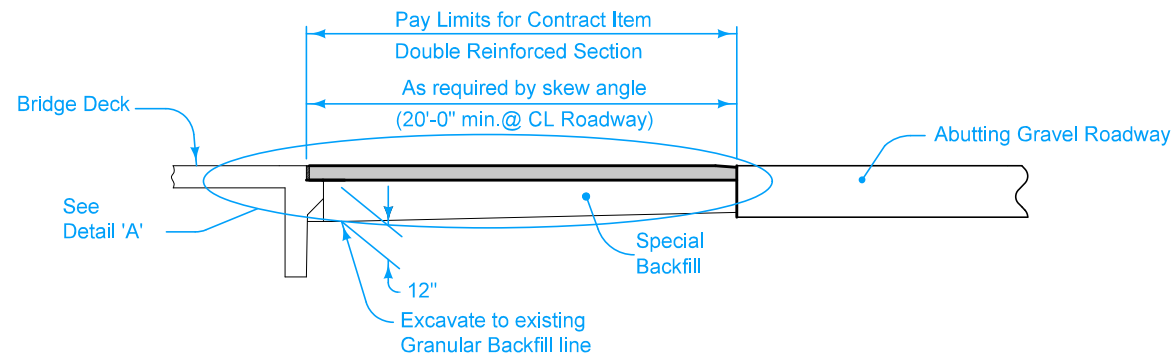
Possible Contract Item:
Bridge Approach, BR-241

Possible Tabulation:
112-6

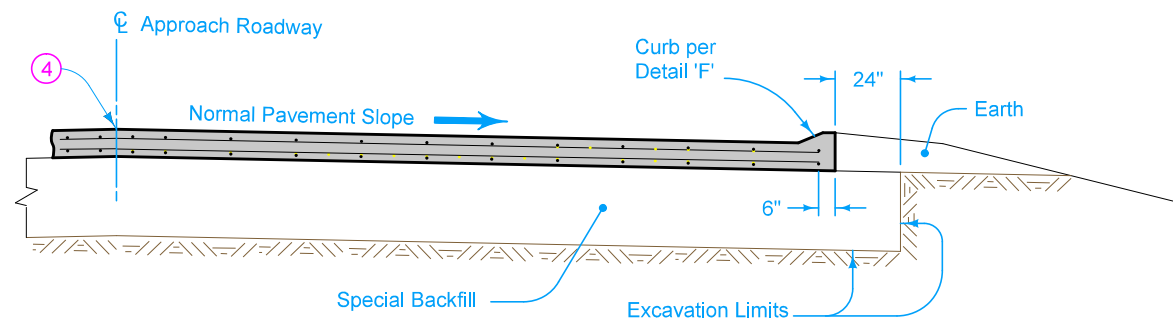
	REVISION	
	1	04-16-24
STANDARD ROAD PLAN		BR-241
		SHEET 1 of 3
REVISIONS: Clarified curb layout and placement in Detail E and G.		
 APPROVED BY DESIGN METHODS ENGINEER		
DOUBLE REINFORCED 10" APPROACH ON GRAVEL ROADS		



PLAN VIEW



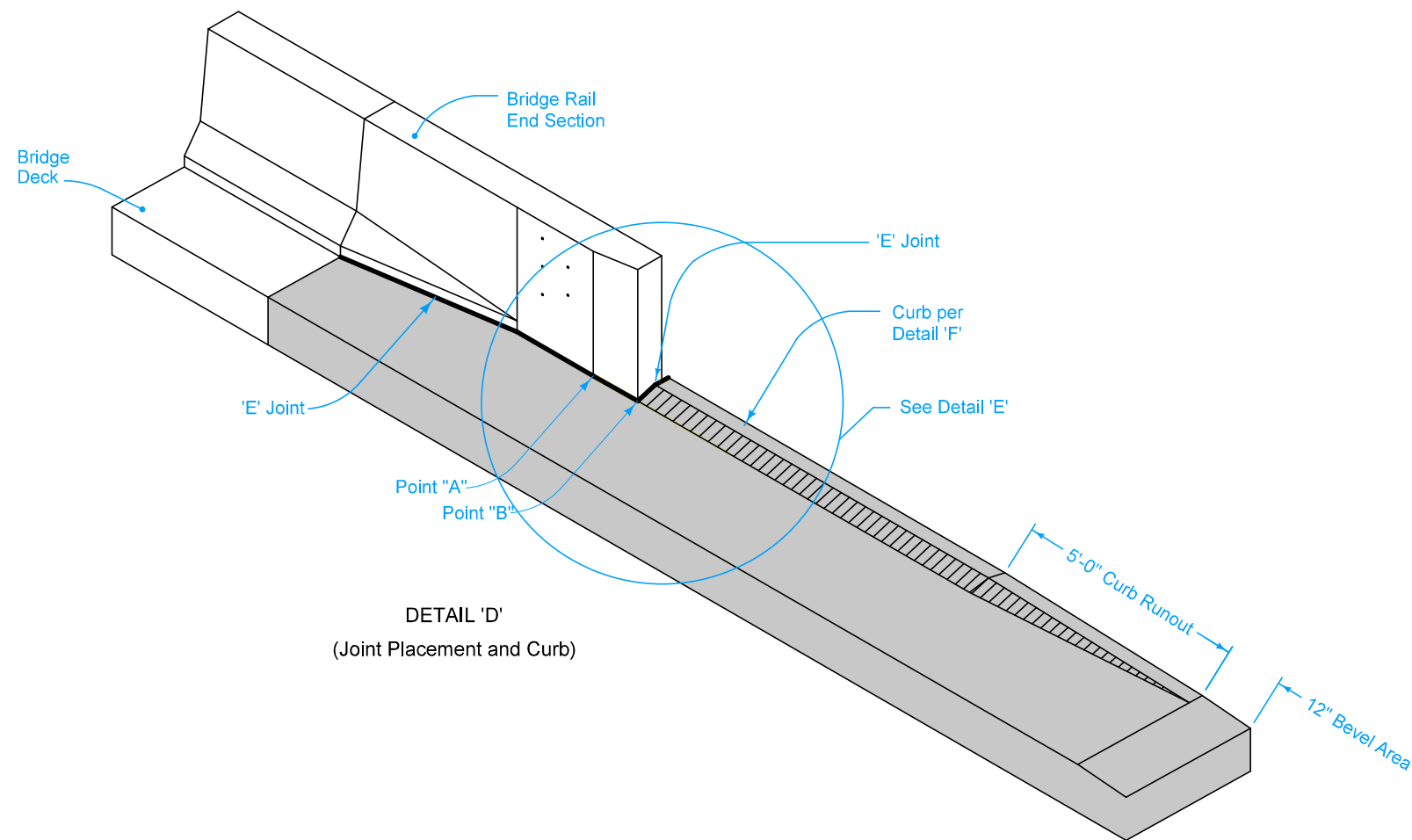
SECTION THRU CENTERLINE



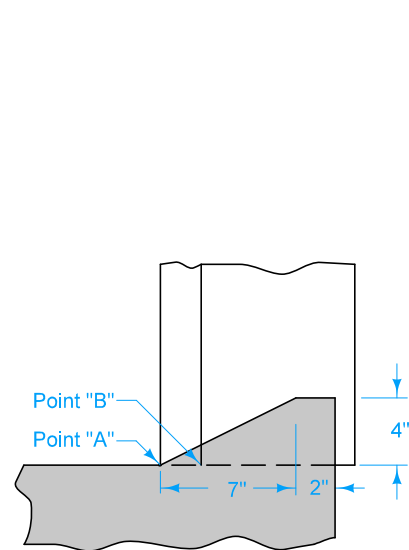
SECTION A-A

- ④ Longitudinal Joint (PV-101):
Single pour - Saw cut joint per Detail B.
Two pours - Use 'KS-2' joint.

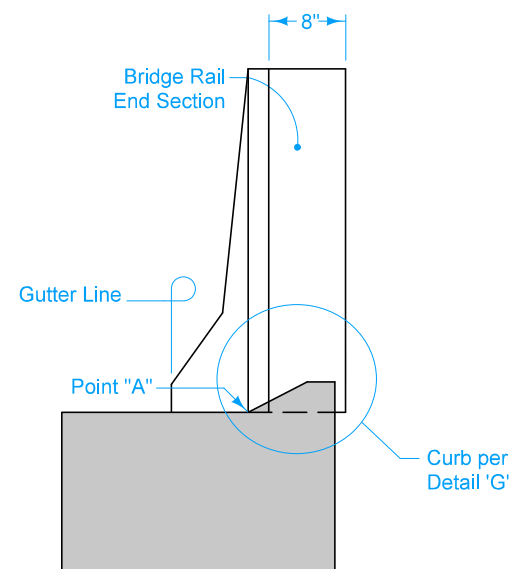
	REVISION	
	1	04-16-24
STANDARD ROAD PLAN		BR-241
		SHEET 2 of 3
REVISIONS: Clarified curb layout and placement in Detail E and G.		
APPROVED BY DESIGN METHODS ENGINEER		
DOUBLE REINFORCED 10" APPROACH ON GRAVEL ROADS		



DETAIL 'D'
(Joint Placement and Curb)



DETAIL 'G'



DETAIL 'E'
(Back of Curb Placement)

	REVISION	
	1	04-16-24
STANDARD ROAD PLAN		BR-241
		SHEET 3 of 3
REVISIONS: Clarified curb layout and placement in Detail E and G.		
 APPROVED BY DESIGN METHODS ENGINEER		
DOUBLE REINFORCED 10" APPROACH ON GRAVEL ROADS		