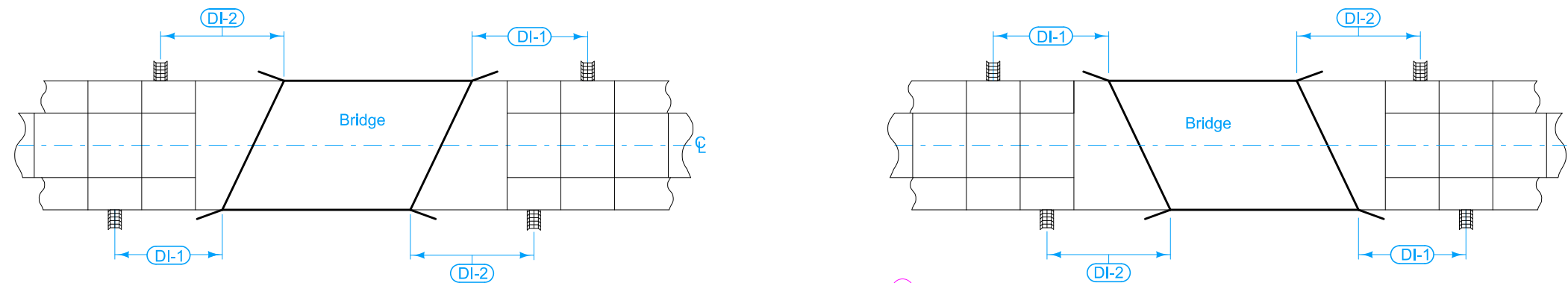
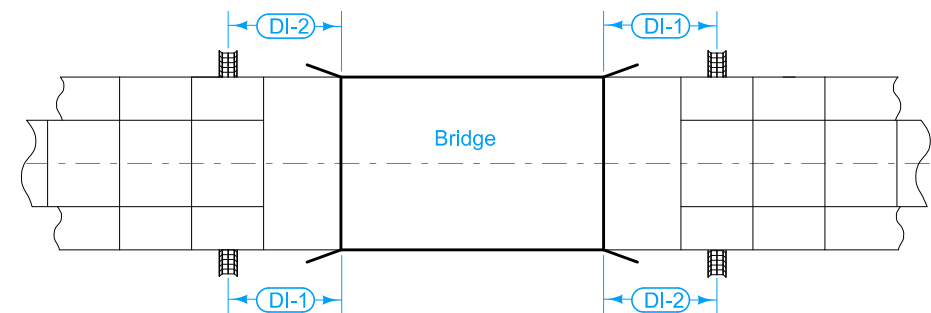


Price bid for "Bridge End Drain, DR-402" is full compensation for furnishing, installing, and constructing the Bridge End Drain as shown.

- ① Continue 4 inch sloped curb to edge of flume per section B-B. Refer to [BR-201](#), [BR-202](#), [BR-203](#), [BR-204](#), or [BR-205](#) for details of 4 inch curb.
- ② DI-1 and DI-2 distances measured from center of Bolt Pattern. Refer to [BA-202](#).
- ③ Extend rock flume to toe of backslope. If no backslope exists, extend rock flume a minimum of 4 feet beyond the toe of foreslope.



FLUME LOCATIONS (Skewed Bridge)



FLUME LOCATIONS (Non-Skewed Bridge)

Possible Contract Items:
Bridge End Drain, DR-402

Incidental to Bridge End Drain:
Macadam Stone Base Material
Erosion Stone
Engineering Fabric
Excavation, hauling, and disposing of material

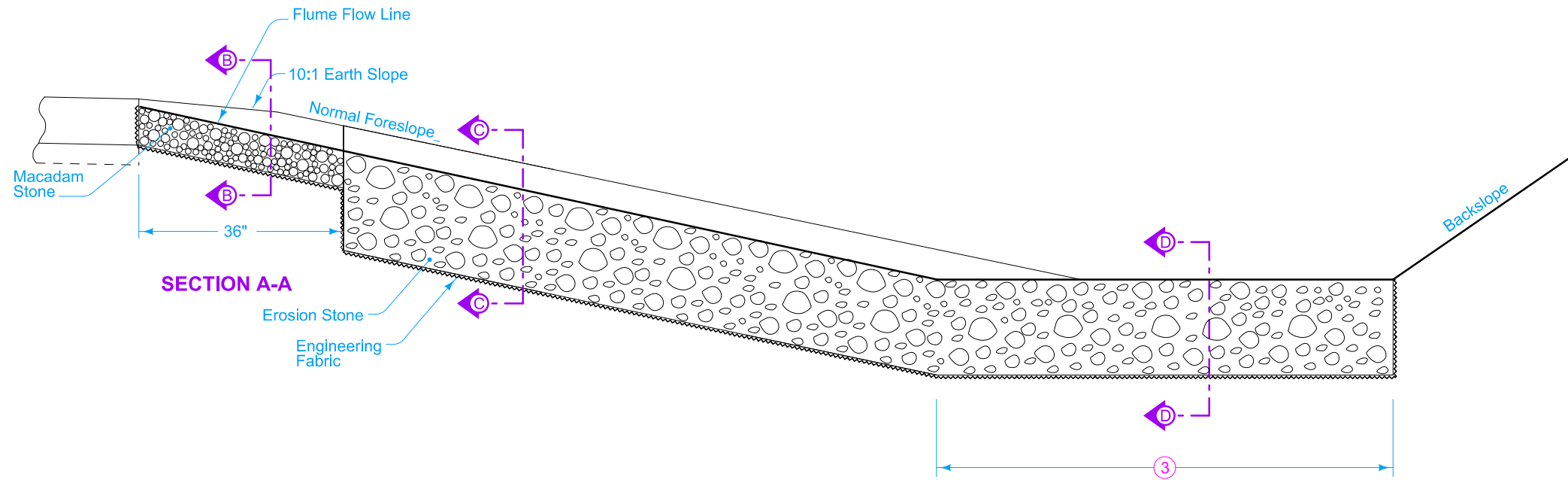
Possible Tabulation:
[104-8A](#)

| | | |
|--------------------------------------------------------------------------------------------------------------------|----------|--------------|
|  STANDARD ROAD PLAN | REVISION | |
| | 7 | 04-16-24 |
| DR-402 | | SHEET 1 of 2 |

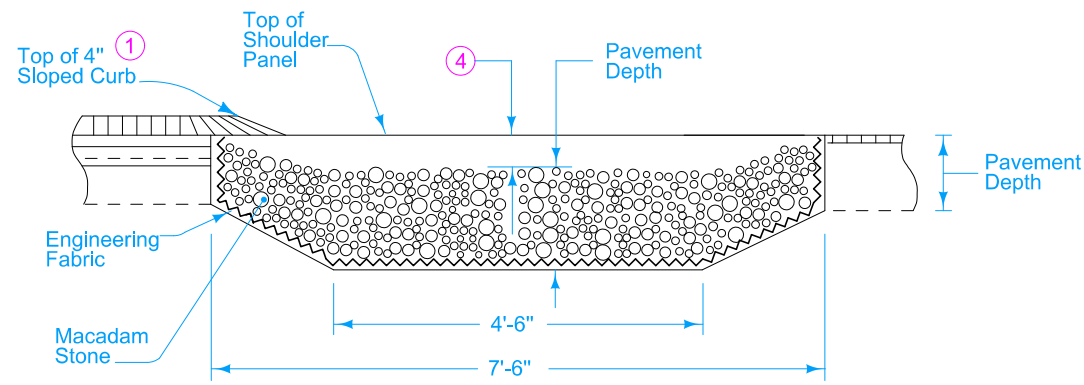
REVISIONS: Added reference to BA-202 in note 2.

Shawn Miller
APPROVED BY DESIGN METHODS ENGINEER

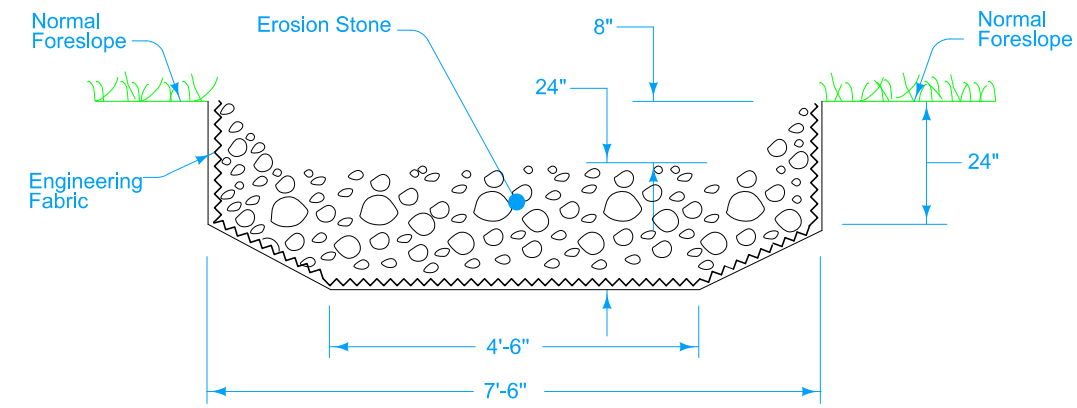
**ROCK FLUME FOR
BRIDGE END DRAIN**



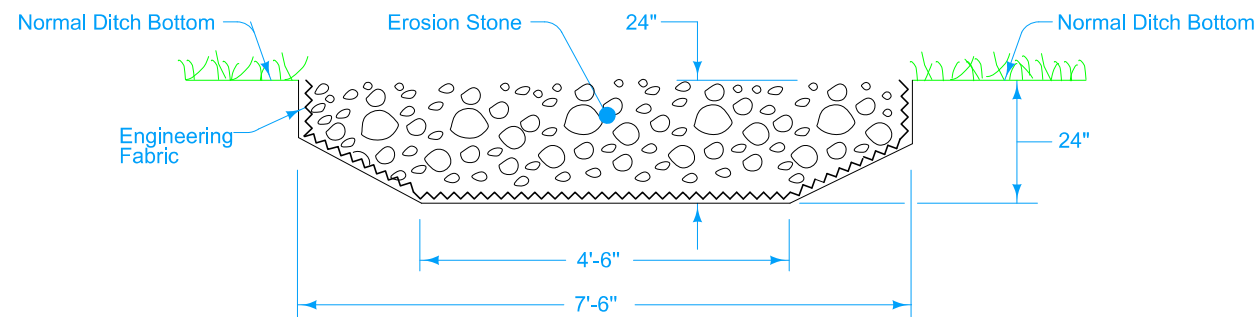
- ① Continue 4 inch sloped curb to edge of flume per section B-B. Refer to BR-201, BR-202, BR-203, BR-204, or BR-205 for details of 4 inch curb.
- ③ Extend flume to toe of backslope. If no backslope exists, extend rock flume a minimum of 4 feet beyond the toe of foreslope.
- ④ Transitions from 2 inches at edge of pavement to 8 inches within 3 feet.
- ⑤ Transition the flume flow line depth from 8 inches at the toe of slope to 0 inches with an approximate transition rate of 2 inches per 1 foot horizontal.



SECTION B-B



SECTION C-C



SECTION D-D ⑤

| | | |
|---------------------------|----------|----------|
| IOWA DOT | REVISION | |
| | 7 | 04-16-24 |
| STANDARD ROAD PLAN | | |
| DR-402 | | |
| SHEET 2 of 2 | | |

REVISIONS: Added reference to BA-202 in note 2.

Shawn Miller
APPROVED BY DESIGN METHODS ENGINEER

**ROCK FLUME FOR
BRIDGE END DRAIN**