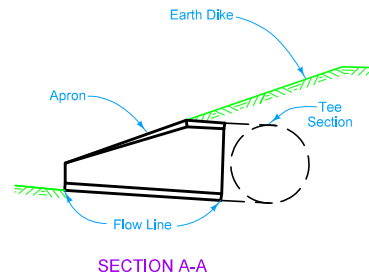
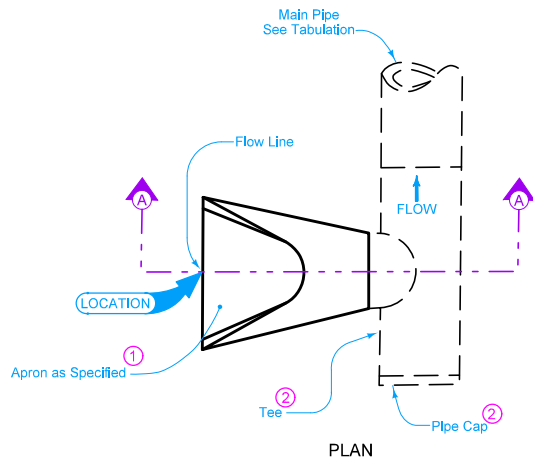



is of roadway, dike, survey, or other as detailed on the plans.

Use when specified. This type of inlet assembly may be substituted for the inlet apron shown on drawings of standard type drainage structures.

- ① Refer to the following:
 DR-201 for circular concrete.
 DR-202 for low clearance concrete.
 DR-203 for circular metal.
 DR-205 for circular concrete with end wall.
 DR-206 for low clearance concrete with end wall.
- ② See DR-142.



Possible Tabulation:
104-3

IOWA DOT	REVISION	
	1	04-18-17
STANDARD ROAD PLAN		DR-612
		SHEET 1 of 1
REVISIONS: Modified note 1 to include references to additional apron types.		
 APPROVED BY DESIGN METHODS ENGINEER		
APRON TEE INLET		