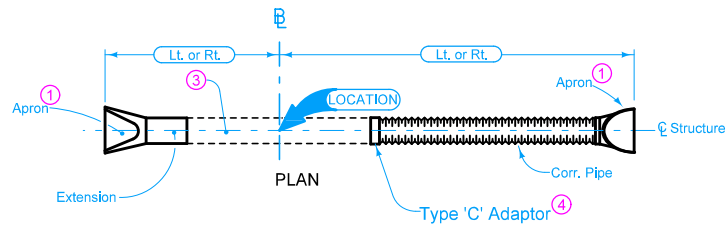


A = Concrete Pipe Length
 B+C+E = Corr. Pipe Length



\bar{E} is \bar{C} of roadway, dike, survey, or other as detailed on plans.

Extend on line of existing structure to Lt., Rt., or both as specified. Adaptors may be required, see DR-122.

- ① Refer to the following:
 DR-201 for circular concrete.
 DR-202 for low clearance concrete.
 DR-203 for circular metal.
 DR-204 for arch metal.
 DR-205 for circular concrete with end wall.
 DR-206 for low clearance concrete with end wall.
- ② Optional Type "D" section only when specified in tabulation.
- ③ Existing structure.
- ④ See DR-122.

Possible Tabulation:
 104-3

IOWA DOT	REVISION	
	1	4-18-17
STANDARD ROAD PLAN		DR-625
		SHEET 1 of 1
<small>REVISIONS: Modified note 1 to include references to additional apron types.</small>		
<i>Brian Smith</i> APPROVED BY DESIGN METHODS ENGINEER		
PIPE EXTENSION LETDOWN STRUCTURE WITH METAL APRON		