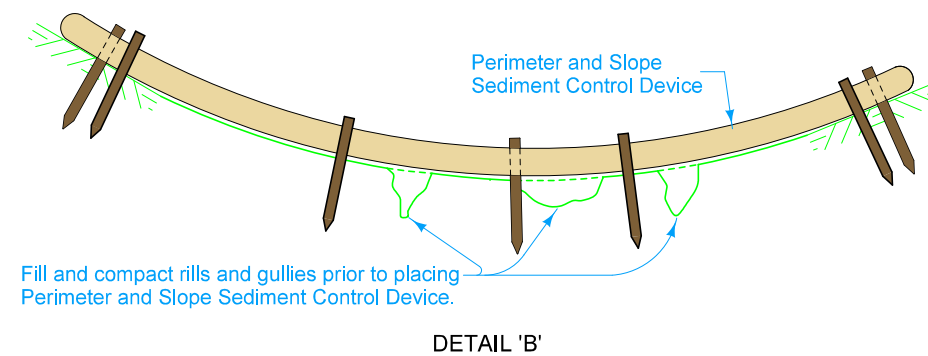
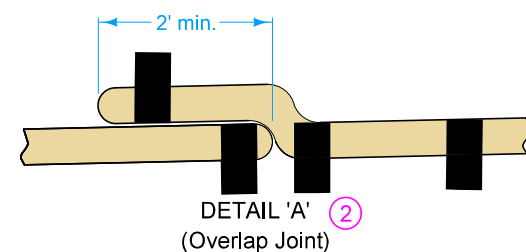
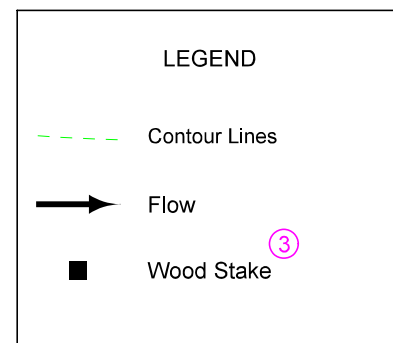
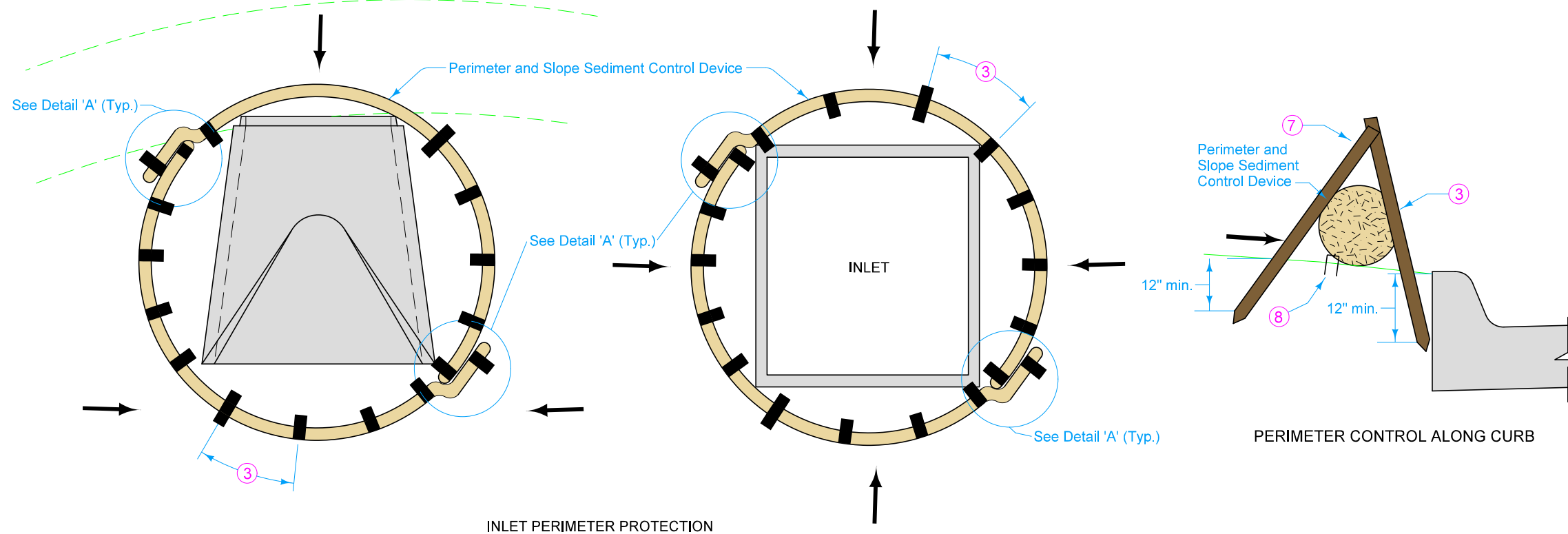
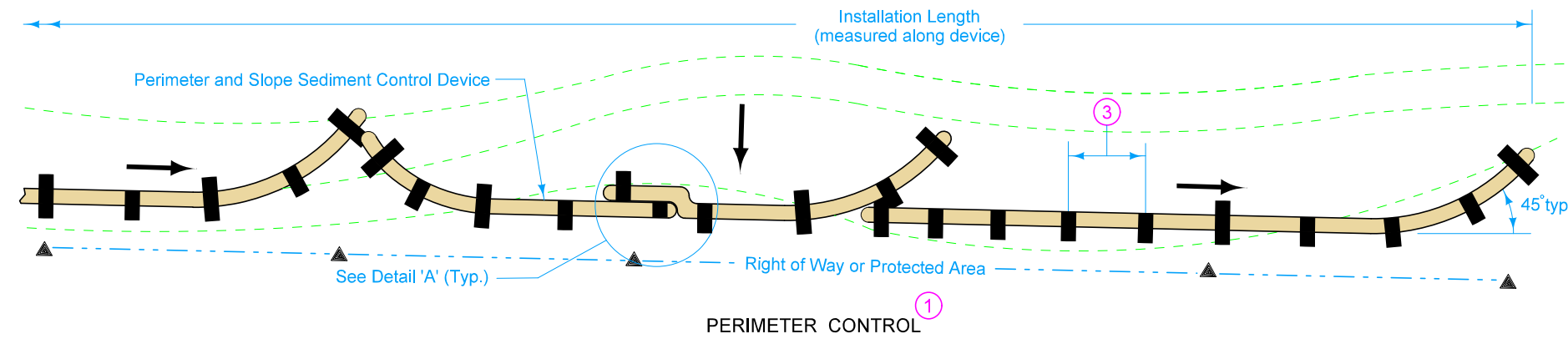


Not intended for use in perennial or intermittent streams.

Fill and compact rills and gullies (see Detail 'B') prior to placing Perimeter and Slope Sediment Control Device. Ensure ground surface is smooth in order to provide continuous contact with Perimeter and Slope Sediment Control Device. Minor ground shaping may be required. Filling and compacting rills and gullies, and minor ground shaping, is incidental to Perimeter and Slope Sediment Control Device.

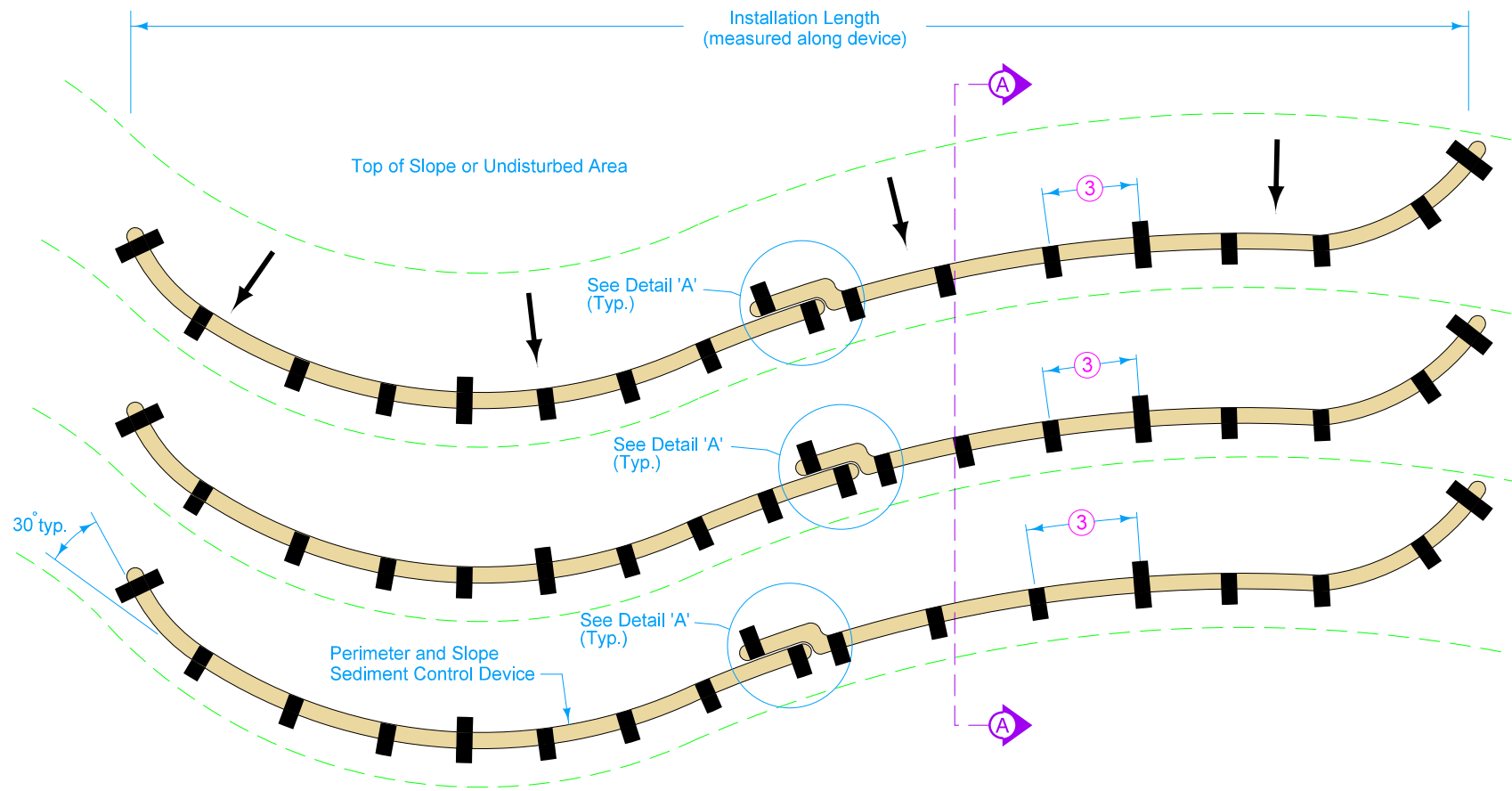
- ① Overlap joints per Detail 'A'. Turn the lower 10 feet of each run up the slope to help contain runoff. When placed such that runoff is conveyed along the device, additional run-ups and/or means may be required to reduce erosion along the device. Run-ups will be included in the installation length.
- ② Extra material required to install overlaps will not be included in the installation length.
- ③ Install downslope stakes at 4 foot maximum spacing. Upslope stakes spaced at ends and middle of device. Use minimum actual stake size 3/4" x 3/4" wood stakes.
- ⑦ All stakes to be placed at approximately 45 degree angle to ground.
- ⑧ Install staples every 2 feet on upslope side.



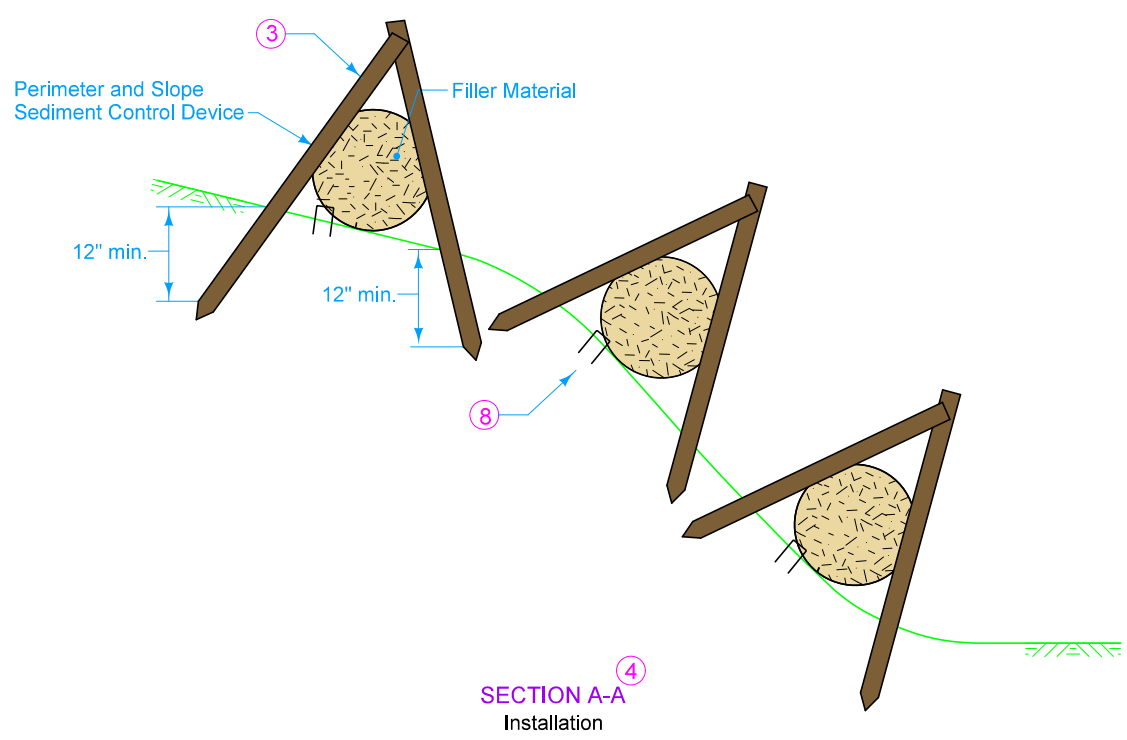
Possible Contract Item:  
Perimeter and Slope Sediment Control Device  
Ditch Check Sediment Control Device

Possible Tabulation:  
100-19

	REVISION	
	6	10-19-21
<b>STANDARD ROAD PLAN</b>		<b>EC-204</b>
REVISIONS: Changed labeling on Sheet 3.		SHEET 1 of 3
 APPROVED BY DESIGN METHODS ENGINEER		
<b>PERIMETER, SLOPE AND DITCH CHECK SEDIMENT CONTROL DEVICES</b>		



④ SLOPE PROTECTION

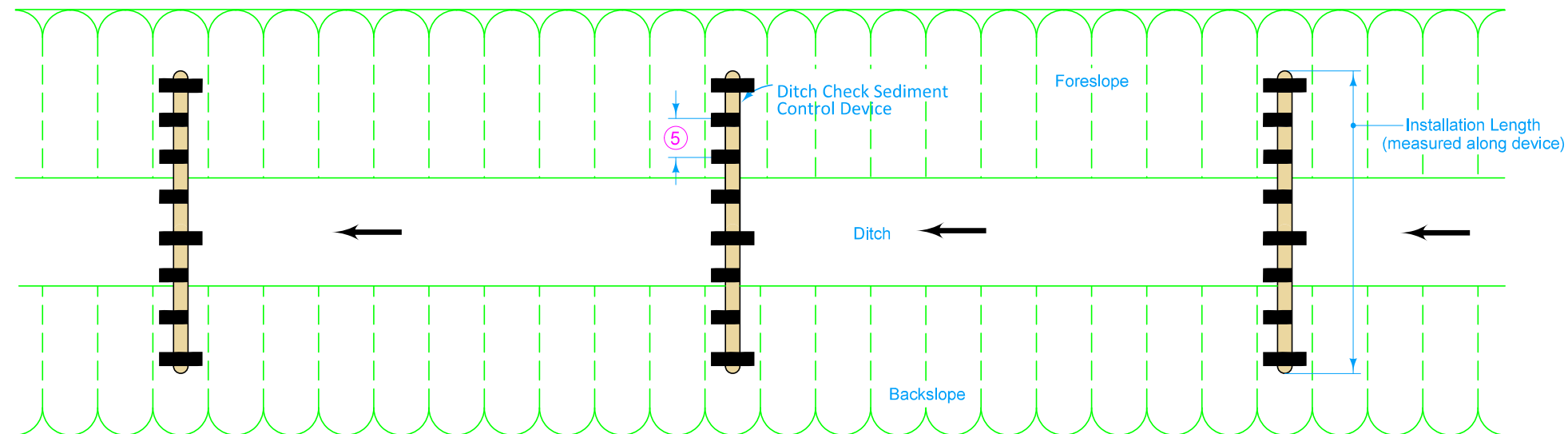


LEGEND	
	Contour Lines
	Flow
	Wood Stake ③

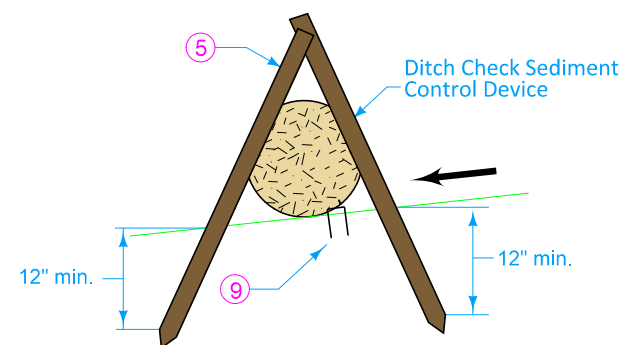
- ③ Install downslope stakes at 4 foot maximum spacing. Upslope stakes spaced at ends and middle of device. Use minimum actual stake size 3/4" x 3/4" wood stakes. Install staples every 2 feet on upslope side.
- ④ Install Slope Protection perpendicular to slope (parallel to contours). Overlap joints per Detail 'A'. Run the last 10 feet of each device up the slope to prevent flow runaround. Run-ups will be included in the installation length.
- ⑧ Install staples every 2 feet on upslope side.

 <b>STANDARD ROAD PLAN</b>	REVISION	
	6	10-19-21
	<b>EC-204</b>	
SHEET 2 of 3		
REVISIONS: Changed labeling on Sheet 3.		
 APPROVED BY DESIGN METHODS ENGINEER		
<b>PERIMETER, SLOPE AND DITCH CHECK SEDIMENT CONTROL DEVICES</b>		

- 5 Install downslope stakes at 2 foot maximum spacing. Upslope stakes spaced at ends and middle of device. Use minimum actual stake size 3/4" x 3/4" wood stakes.
- 6 Install Ditch Protection perpendicular to ditch. Overlap joints per Detail 'A'.
- 9 Install staples every 1 foot on upslope side.



DITCH PROTECTION 6



INSTALLATION IN DITCH

LEGEND	
	Contour Lines
	Flow
	Wood Stake 5

	REVISION	
	6	10-19-21
<b>STANDARD ROAD PLAN</b>		<b>EC-204</b>
REVISIONS: Changed labeling on Sheet 3.		SHEET 3 of 3
 APPROVED BY DESIGN METHODS ENGINEER		
<b>PERIMETER, SLOPE AND DITCH CHECK SEDIMENT CONTROL DEVICES</b>		