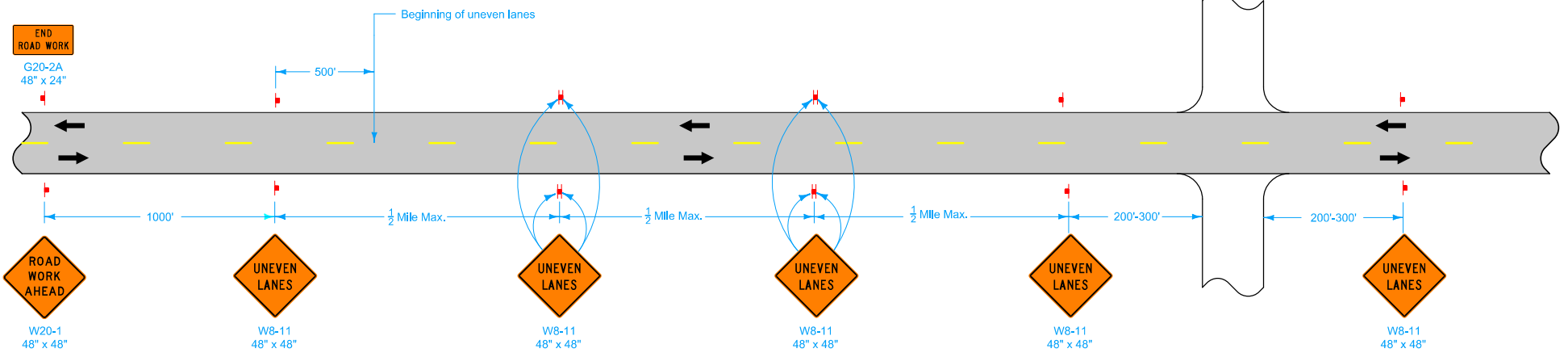
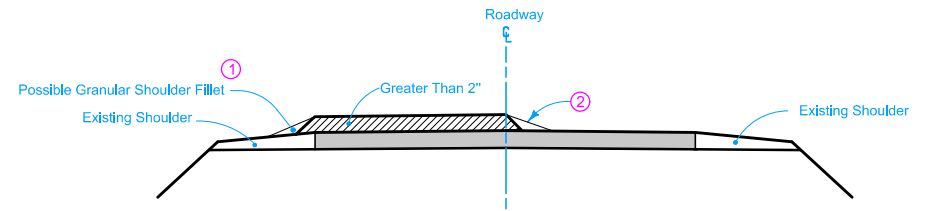
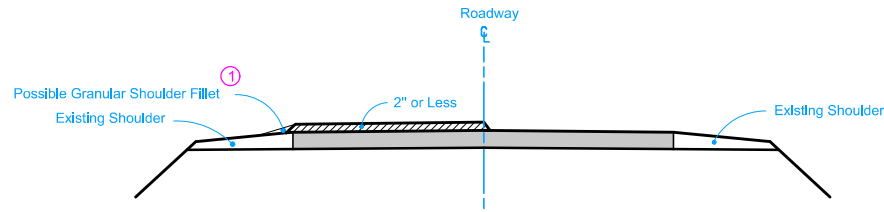


**DESIGN LIFT THICKNESSES 2" OR LESS**

**DESIGN LIFT THICKNESSES GREATER THAN 2" (WITH  $\phi$  FILLET)**



- ① Shoulder Fillet: Refer to Section 1107 of the Standard Specifications and Safety Edge specifications.
- ② Centerline fillet may be notched wedge, Safety Edge, or a temporary 3:1 HMA fillet.

Possible Contract Items:  
Pavement Marking Items  
Traffic Control

Possible Tabulation:  
108-22

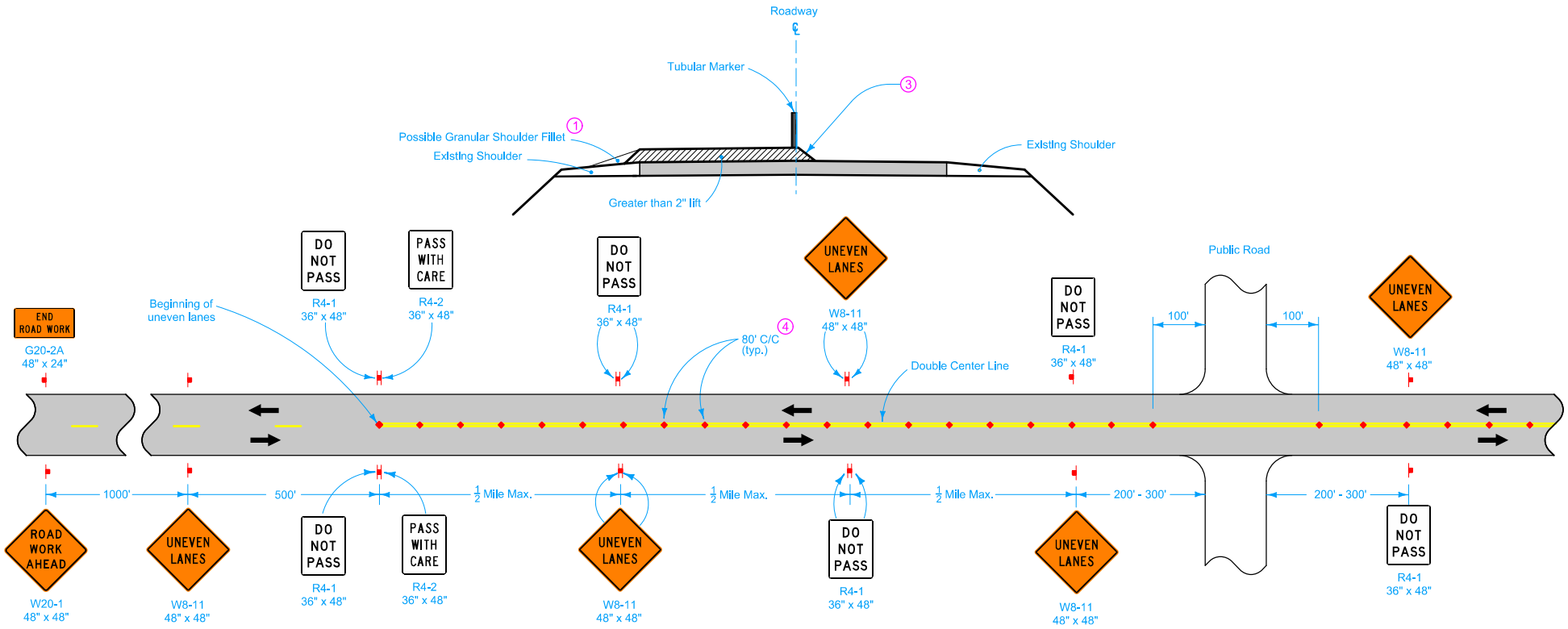
**LEGEND**

← Direction of Traffic

↑ Traffic Sign

<b>IOWA DOT</b>	REVISION	
	4	10-15-19
<b>STANDARD ROAD PLAN</b>		<b>TC-282</b>
REVISIONS: New logo.		SHEET 1 of 3
APPROVED BY DESIGN METHODS ENGINEER		
<b>UNEVEN LANES</b>		

**DESIGN LIFT THICKNESSES GREATER THAN 2" (WITHOUT  $\phi$  FILLET)**



**END ROAD WORK**  
G20-2A  
48" x 24"

Beginning of uneven lanes

**DO NOT PASS**  
R4-1  
36" x 48"

**PASS WITH CARE**  
R4-2  
36" x 48"

**DO NOT PASS**  
R4-1  
36" x 48"

**UNEVEN LANES**  
W8-11  
48" x 48"

**DO NOT PASS**  
R4-1  
36" x 48"

**UNEVEN LANES**  
W8-11  
48" x 48"

**ROAD WORK AHEAD**  
W20-1  
48" x 48"

**UNEVEN LANES**  
W8-11  
48" x 48"

**DO NOT PASS**  
R4-1  
36" x 48"

**PASS WITH CARE**  
R4-2  
36" x 48"

**UNEVEN LANES**  
W8-11  
48" x 48"

**DO NOT PASS**  
R4-1  
36" x 48"

**UNEVEN LANES**  
W8-11  
48" x 48"

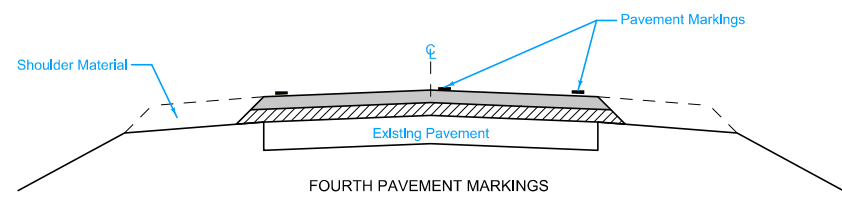
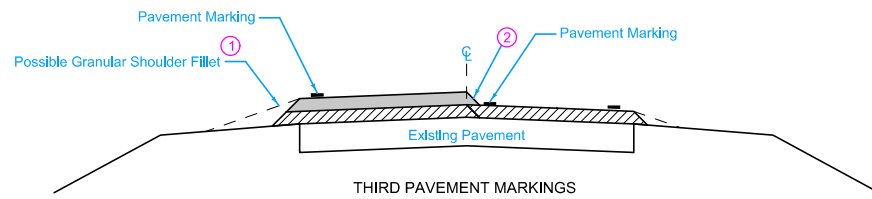
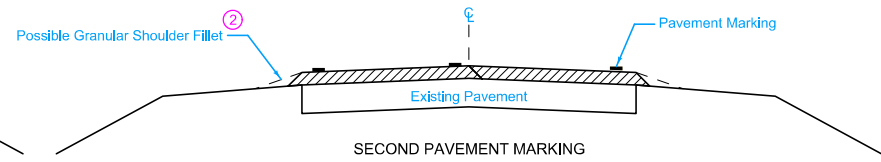
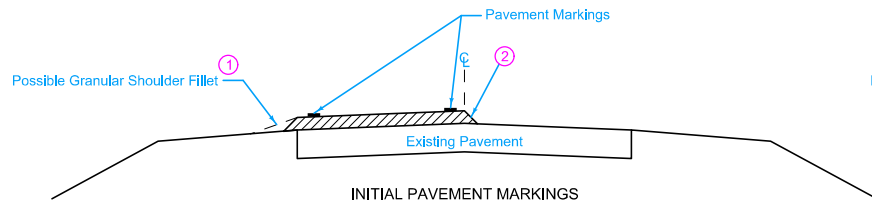
**DO NOT PASS**  
R4-1  
36" x 48"

LEGEND	
	Direction of Traffic
	Traffic Sign
	Tubular Marker

"No-Passing" zones shall not exceed 2.5 miles for ADT less than 2500 vpd or 2.0 miles for ADT from 2500 to 5000 vpd.



- ① Shoulder Fillet: Refer to Section 1107 of the Standard Specifications and Safety Edge specifications.
- ③ Typical 1:1 taper.
- ④ Spacing = 40 feet where horizontal curve radius is less than 1000 feet.



	REVISION
	4   10-15-19
<b>STANDARD ROAD PLAN</b>	<b>TC-282</b>
REVISIONS: New logo.	SHEET 2 of 3
APPROVED BY DESIGN METHODS ENGINEER	
<b>UNEVEN LANES</b>	



PAVEMENT MARKING SEQUENCE

- ① Shoulder Fillet: Refer to Standard Specification 1107 and Safety Edge specifications.
- ② Centerline fillet may be notched wedge, Safety Edge, or a temporary 3:1 HMA fillet.

LEGEND	
	Surface Course
	Intermediate Course

	REVISION
	4   10-15-19
STANDARD ROAD PLAN	TC-282
REVISIONS: New logo.	SHEET 3 of 3
 APPROVED BY DESIGN METHODS ENGINEER	
<b>UNEVEN LANES</b>	