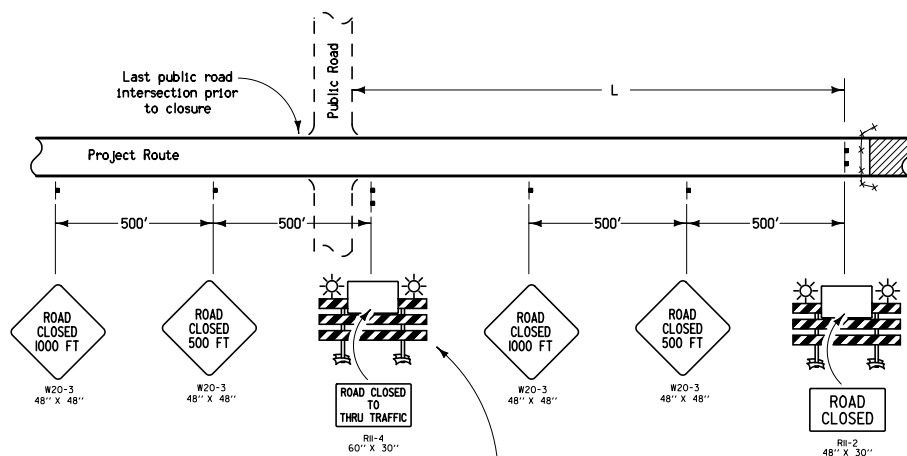


SITUATION 1 (RURAL)

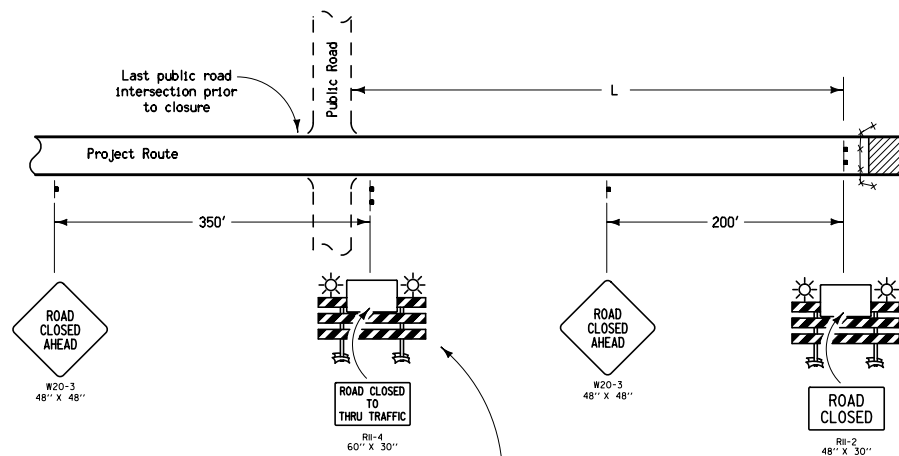
Project Route Closure



Where L distance is less than 1000',
move this barricade to the center
of the traffic lane.

SITUATION 1 (URBAN)

Project Route Closure



Where L distance is less than 500',
move this barricade to the center
of the traffic lane.

LEGEND

- Traffic Sign
- Type III Barricade
- Orange Mesh Safety Fence
- Type 'A' Low-Intensity Flashing Warning Light
- Work Area

Possible Contract Items:

Traffic Control
Safety Closures

Possible Tabulation:

108-13A

Iowa Department
of Transportation

STANDARD ROAD PLAN

REVISIONS: No significant changes; reissued for file maintenance.

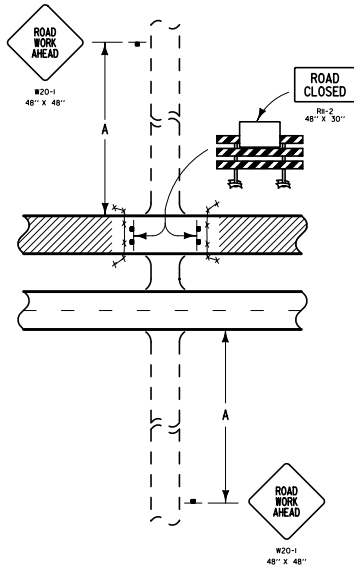
Deanna Mufelt
APPROVED BY DESIGN METHODS ENGINEER

ROAD CLOSURE

REVISION
2 10-20-09
TC-252
SHEET 1 of 2

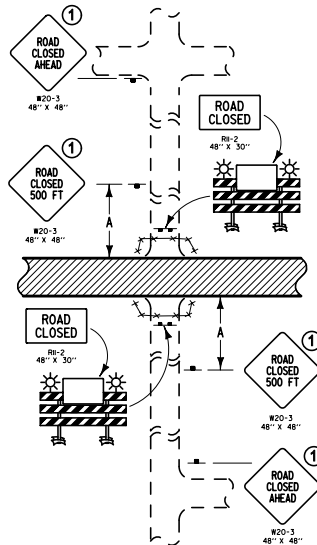
SITUATION 2

Public cross-traffic maintained.
No access to project.



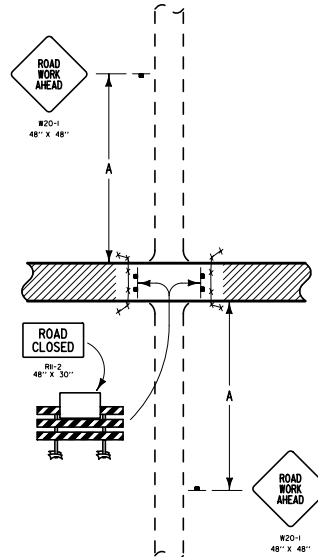
SITUATION 3

No access to project
(Applicable to T-Intersections)



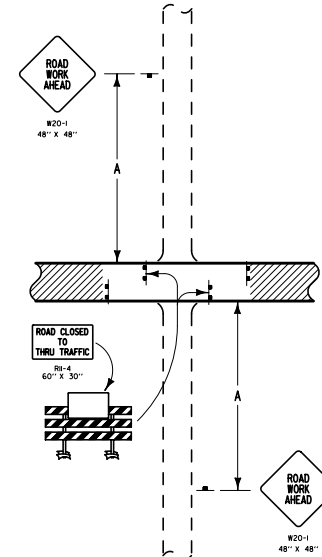
SITUATION 4

Public cross-traffic maintained.
No access to project.



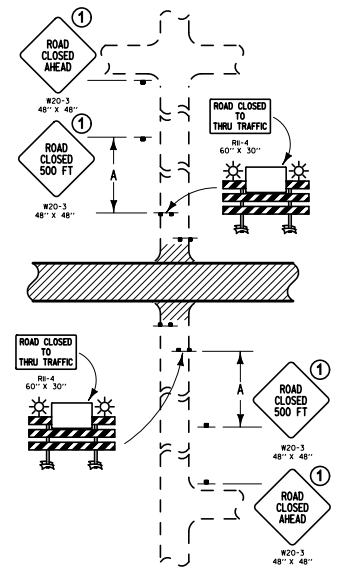
SITUATION 5

Public cross-traffic maintained.
Contractor and resident access.



SITUATION 6

No public access. Contractor and resident
access only. (Applicable to T-Intersections)



LEGEND

- Traffic Sign
- Type III Barricade
- Orange Mesh Safety Fence
- Type 'A' Low-Intensity Flashing Warning Light
- Work Area

Location	A
Urban	200'
Rural	500'

During suspension of work, (such as over winter):

- Use Situation 2 on two-lane to four-lane projects.
- Situation 5 is preferred where cross-traffic is maintained.

- ① In urban locations, remove the ROAD CLOSED 500 FT sign and replace it with the ROAD CLOSED AHEAD sign.

Iowa Department of Transportation STANDARD ROAD PLAN REVISIONS: No significant changes, reissued for file maintenance. <i>Deanna McFalls</i> APPROVED BY DESIGN METHODS ENGINEER ROAD CLOSURE	REVISION	2	10-20-09
	TC-252		
	SHEET 2 of 2		