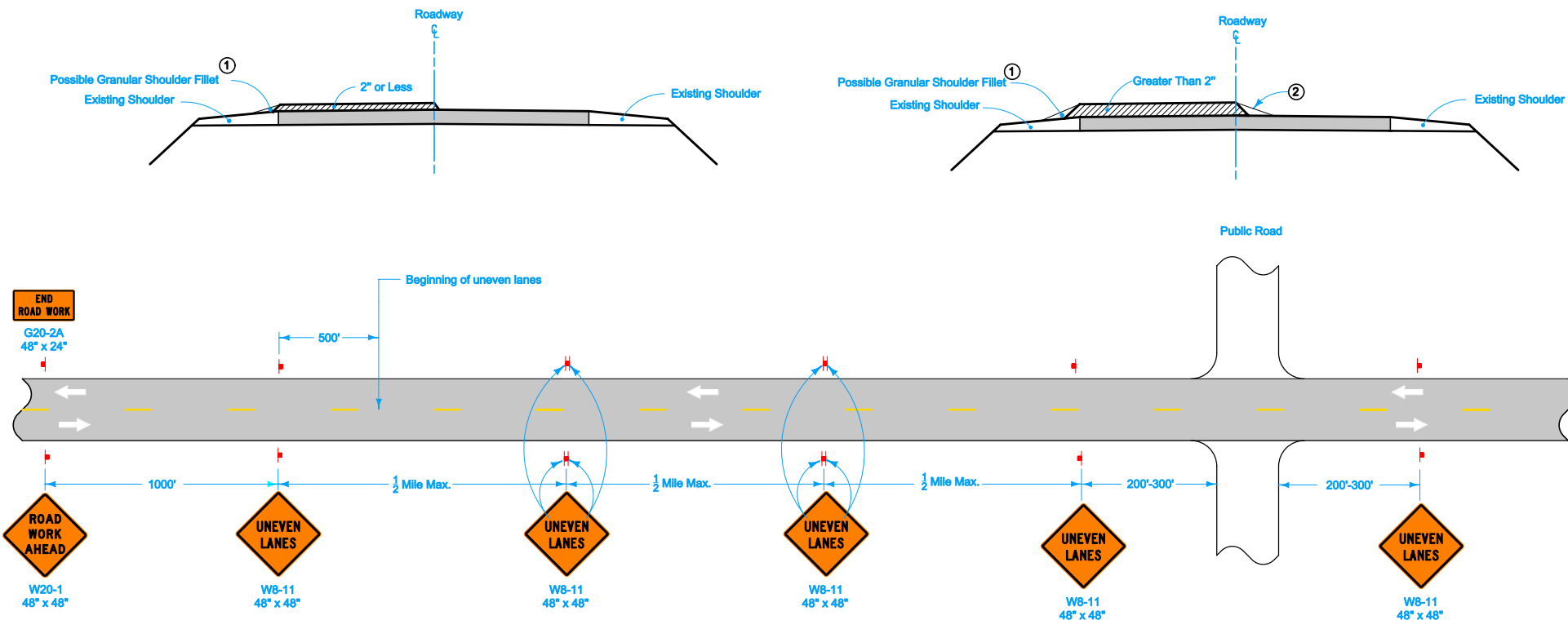


DESIGN LIFT THICKNESSES 2" OR LESS

DESIGN LIFT THICKNESSES GREATER THAN 2" (WITH $\frac{1}{2}$ " FILLET)



LEGEND

← Direction of Traffic

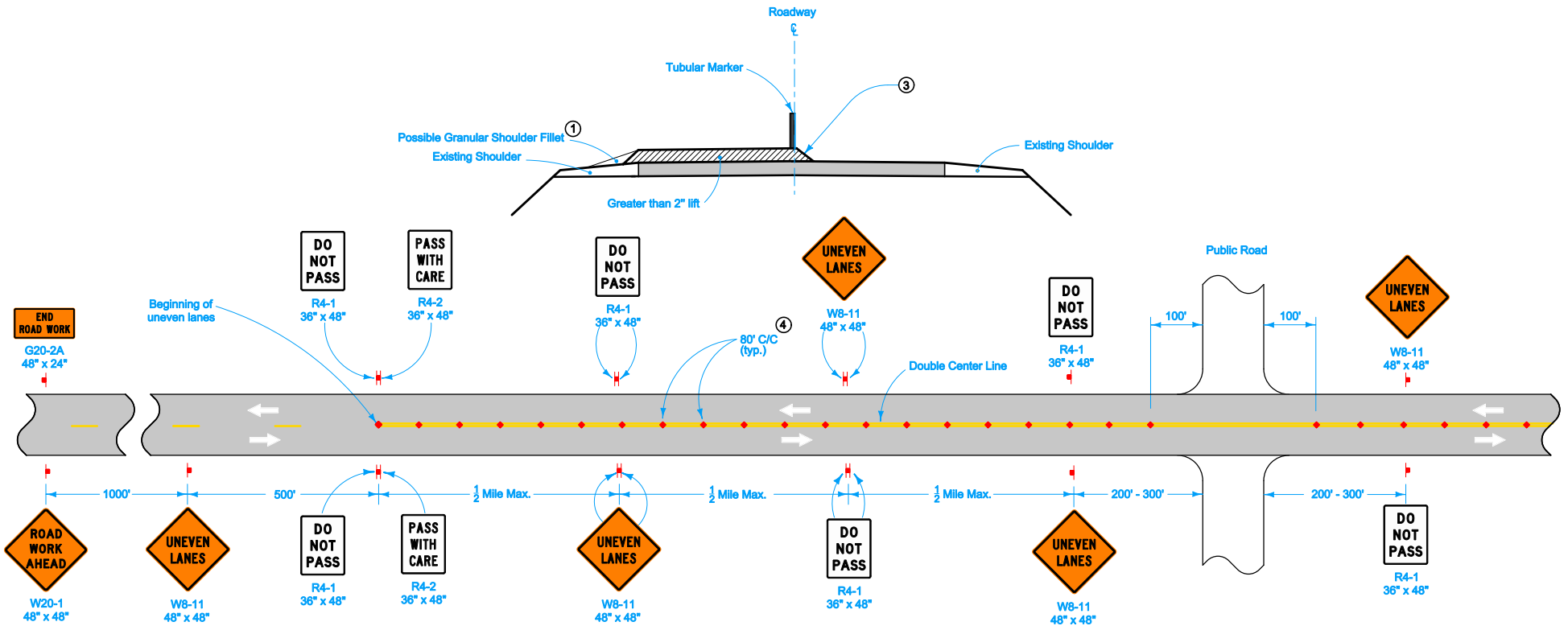
↑ Traffic Sign

- ① Shoulder Fillet: Refer to Standard Specification 1107 and Safety Edge specifications.
- ② Centerline fillet may be notched wedge, Safety Edge, or a temporary 3:1 HMA fillet.

Contract Items:
Traffic Control
Pavement Marking Items
Tabulation: 108-22

<p>Iowa Department of Transportation</p> <p>STANDARD ROAD PLAN</p> <p>REVISIONS: Modified to include safety edge.</p> <p><i>Deanna Mifflin</i> APPROVED BY DESIGN METHODS ENGINEER</p> <p>UNEVEN LANES</p>	REVISION 2 10-19-10	
	TC-282	
	SHEET 1 of 2	

DESIGN LIFT THICKNESSES GREATER THAN 2" (WITHOUT $\frac{1}{2}$ FILLET)



LEGEND	
	Direction of Traffic
	Traffic Sign
	Tubular Marker

"No-Passing" zones shall not exceed 2.5 miles for ADT less than 2500 vpd or 2.0 miles for ADT from 2500 to 5000 vpd.

- ① Shoulder Fillet: Refer to Standard Specification 1107 and Safety Edge specifications.
- ③ Typical 1:1 taper.
- ④ Spacing = 40 feet where horizontal curve radius is less than 1000 feet.

<p>Iowa Department of Transportation</p> <p>STANDARD ROAD PLAN</p> <p>REVISIONS: Modified to include safety edge.</p> <p><i>Deanna Mifflin</i> APPROVED BY DESIGN METHODS ENGINEER</p> <p>UNEVEN LANES</p>	<p>REVISION</p> <table border="1"> <tr> <td>2</td> <td>10-19-10</td> </tr> </table>	2	10-19-10
	2	10-19-10	
	<p>TC-282</p>		
	<p>SHEET 2 of 2</p>		