

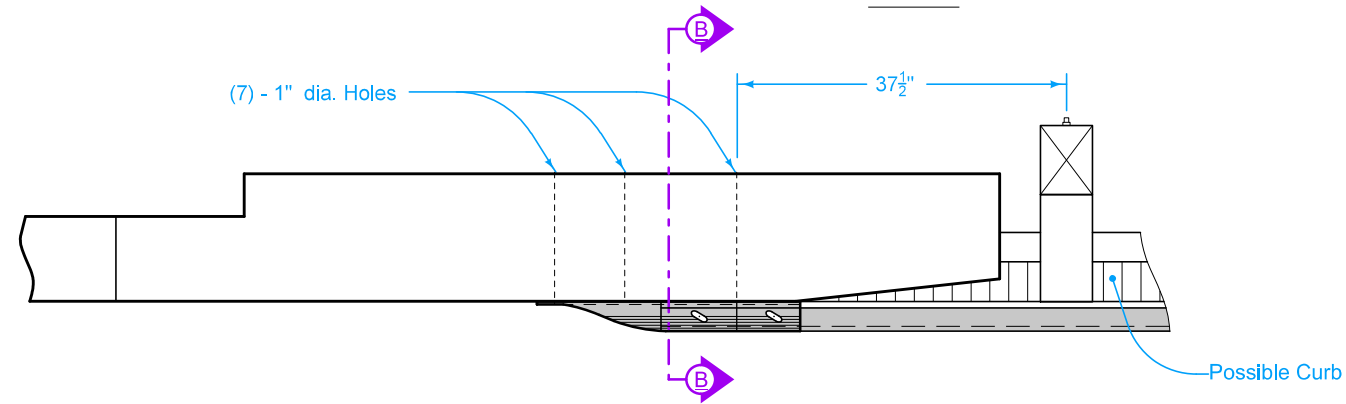
- ① See BA-201.
- ② BTS post # 14 BA-201. BTS post #5 BA-221.
- ③ Lap the Terminal Connector on the outside of the nested thrie beam rails for attachments on the trailing end of a bridge.

Possible Contract Item:  
 Steel Beam Guardrail End Anchor, Bolted

Materials included in the Contract Item:  
 Thrie-Beam Terminal Connector  
 Approved 7/8" x sufficient length Hex Bolts  
 Approved 7/8" Hex Nuts  
 Approved 15/16" Washers

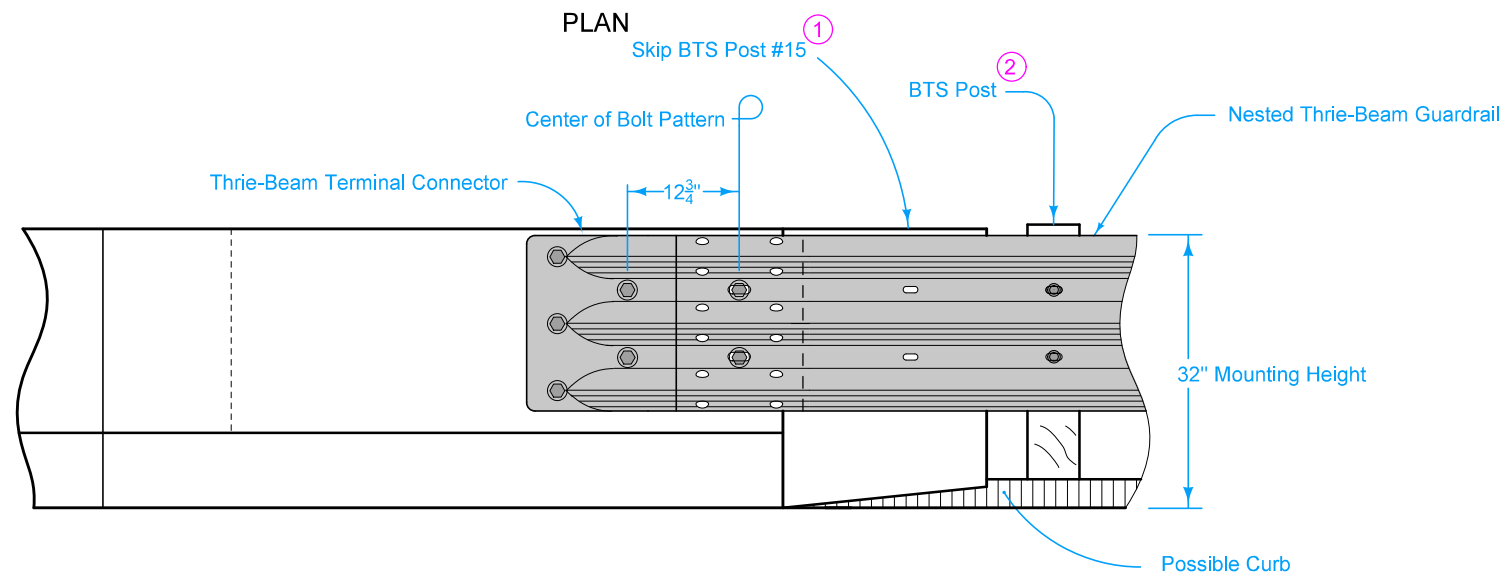
	REVISION	
	5	10-15-24
<b>STANDARD ROAD PLAN</b>		<b>BA-202</b>
REVISIONS: Added Type 'D'.		SHEET 1 of 4
APPROVED BY DESIGN METHODS ENGINEER		
<b>STEEL BEAM GUARDRAIL BOLTED END ANCHOR</b>		

TYPE B

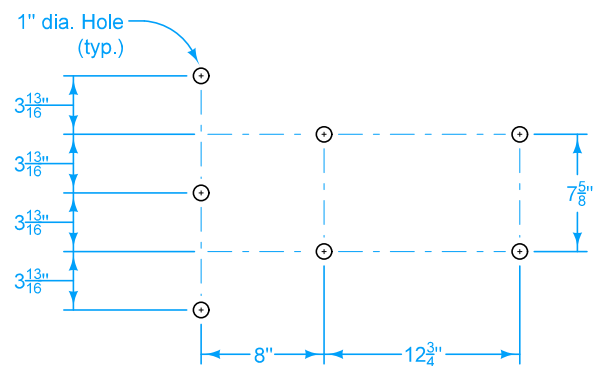


- ① See BA-201.
- ② BTS post # 14 BA-201. BTS post #5 BA-221.

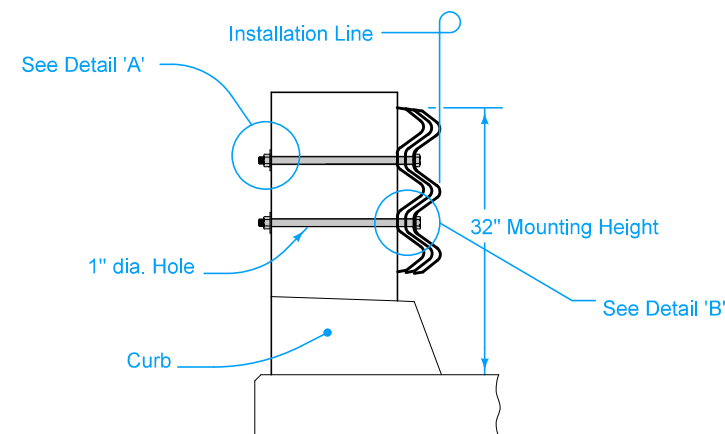
PLAN



ELEVATION



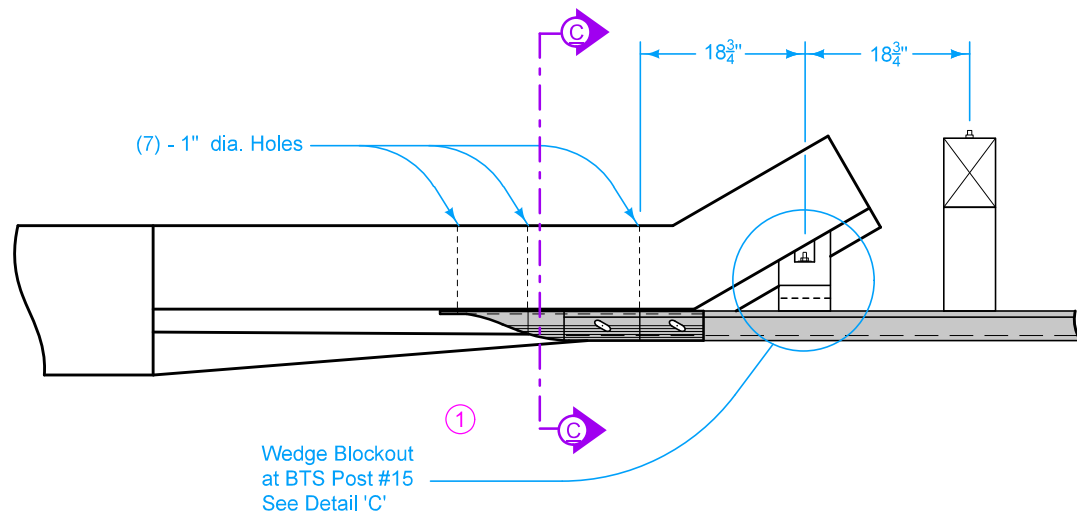
7 - BOLT PATTERN  
Thrie - Beam Terminal Connector



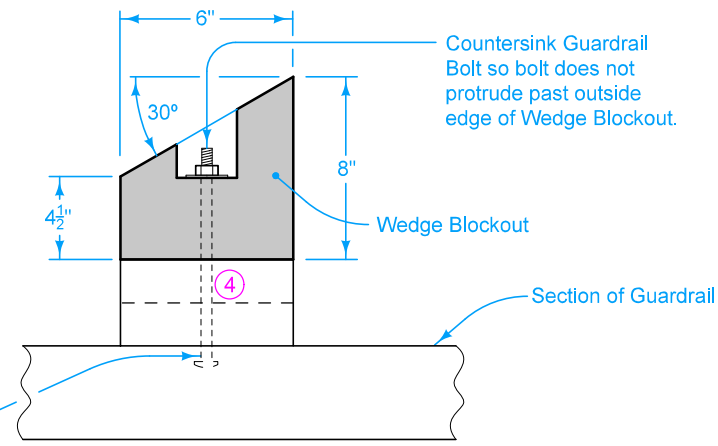
SECTION B-B

	REVISION	
	5	10-15-24
<b>STANDARD ROAD PLAN</b>		<b>BA-202</b>
REVISIONS: Added Type 'D'.		SHEET 2 of 4
 APPROVED BY DESIGN METHODS ENGINEER		
<b>STEEL BEAM GUARDRAIL BOLTED END ANCHOR</b>		

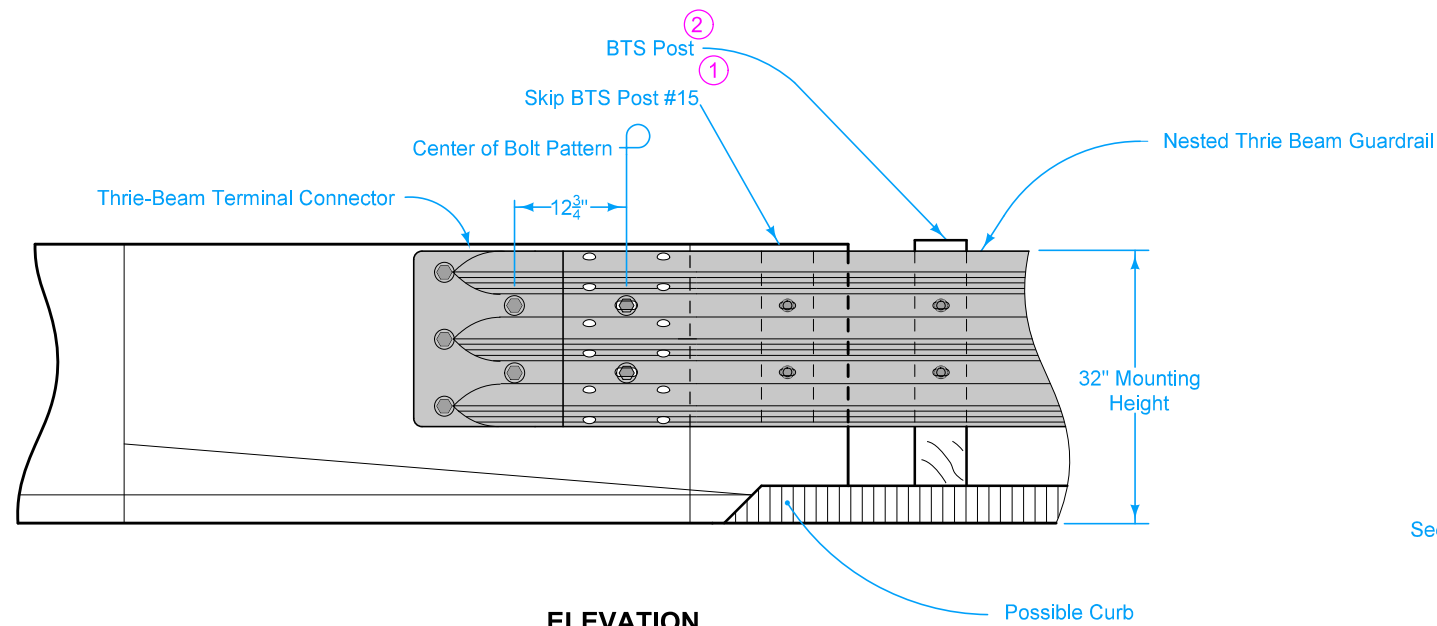
TYPE C



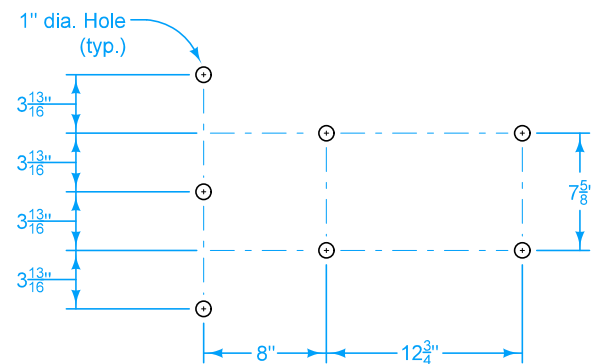
PLAN



DETAIL 'C'

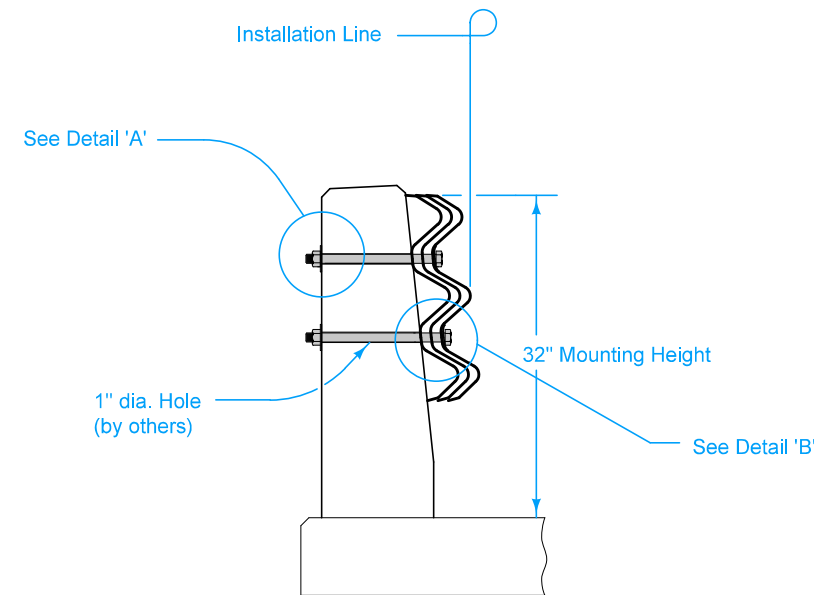


ELEVATION



7 - BOLT PATTERN

Thrie - Beam Terminal Connector



SECTION C-C

- ① See BA-201.
- ② BTS post # 14 BA-201. BTS post #5 BA-221.
- ④ Use treated spacer boards (1 in. x 6 in. or 2 in. x 6 in.) to produce a tight fit between the wedge breakout and endpost. A nominal 1 inch gap is acceptable. Spacer boards are incidental to bolted end anchor.

 <b>IOWA DOT</b> <b>STANDARD ROAD PLAN</b>	REVISION	
	4	10-15-24
<b>BA-202</b>		SHEET 3 of 4

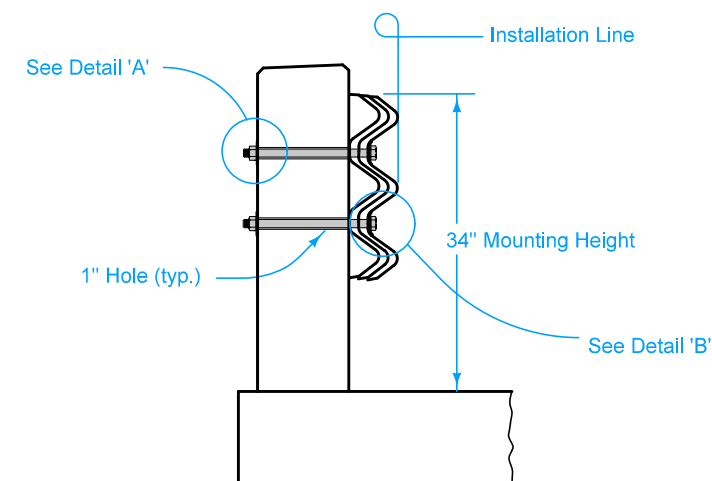
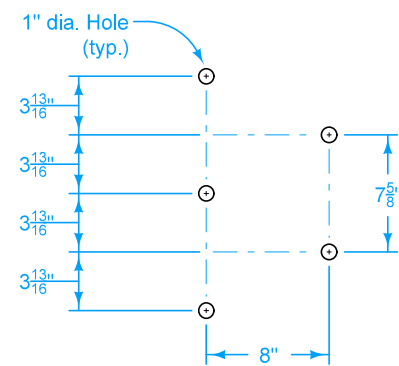
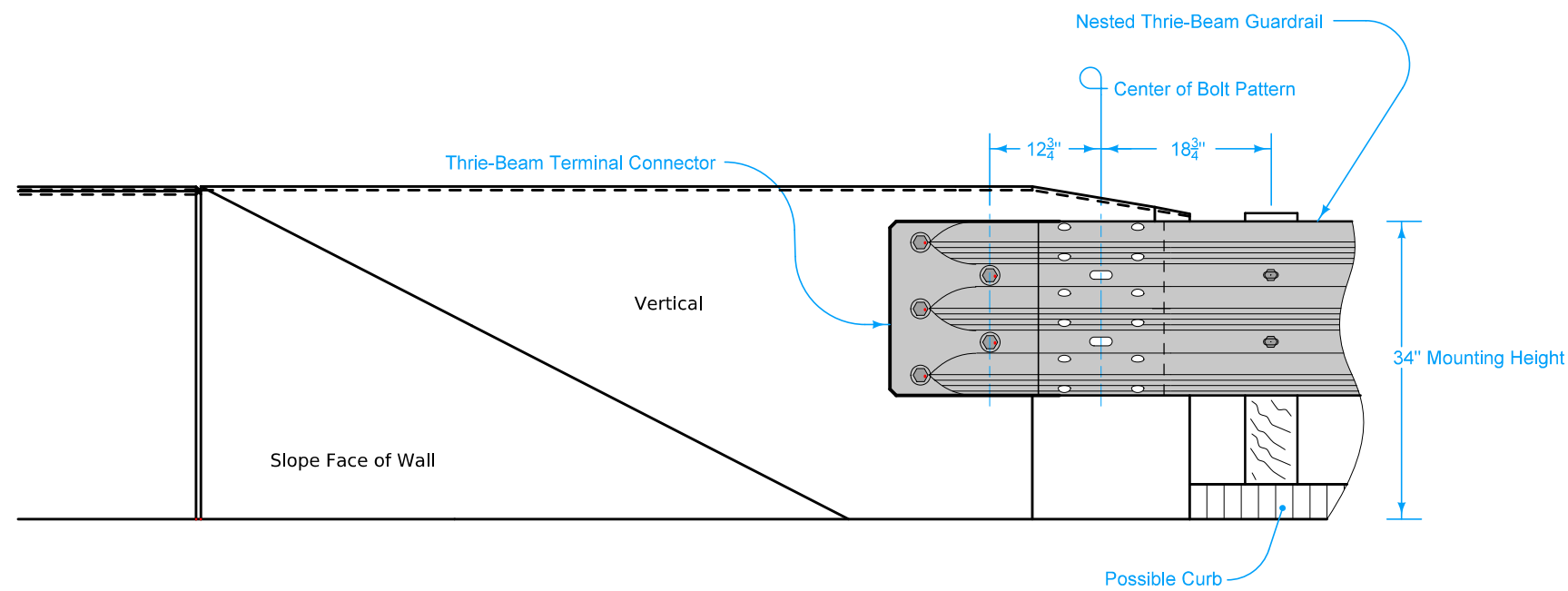
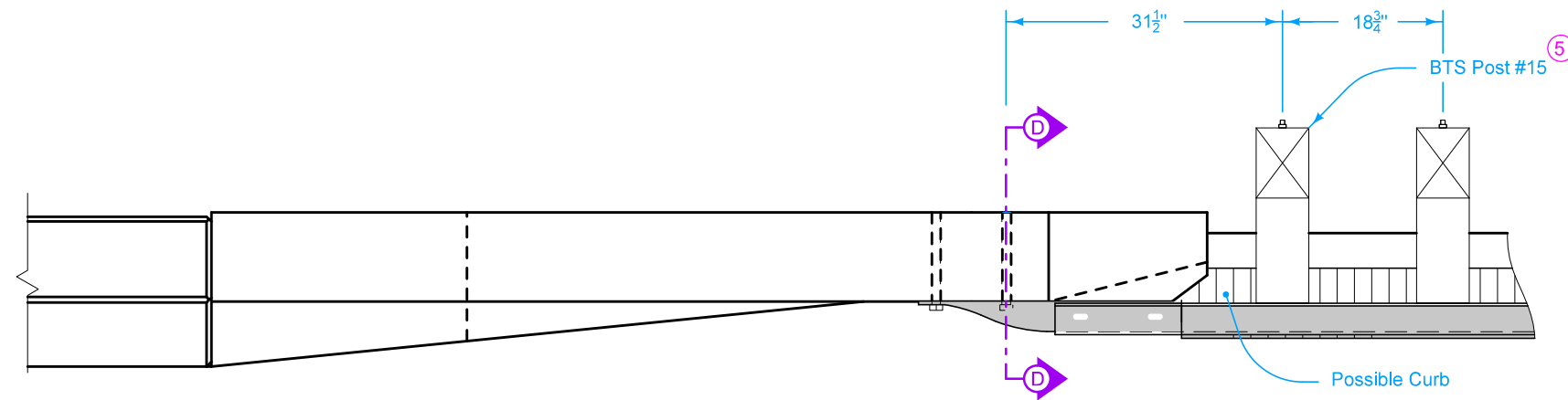
REVISIONS: Added Type 'D'.

*Shawn Miller*  
APPROVED BY DESIGN METHODS ENGINEER

**STEEL BEAM GUARDRAIL  
BOLTED END ANCHOR**

TYPE D

⑤ See BA-209.



	REVISION	
	5	10-15-24
<b>STANDARD ROAD PLAN</b>		<b>BA-202</b>
REVISIONS: Added Type 'D'.		SHEET 4 of 4

*Shawn Miller*  
APPROVED BY DESIGN METHODS ENGINEER

**STEEL BEAM GUARDRAIL  
BOLTED END ANCHOR**