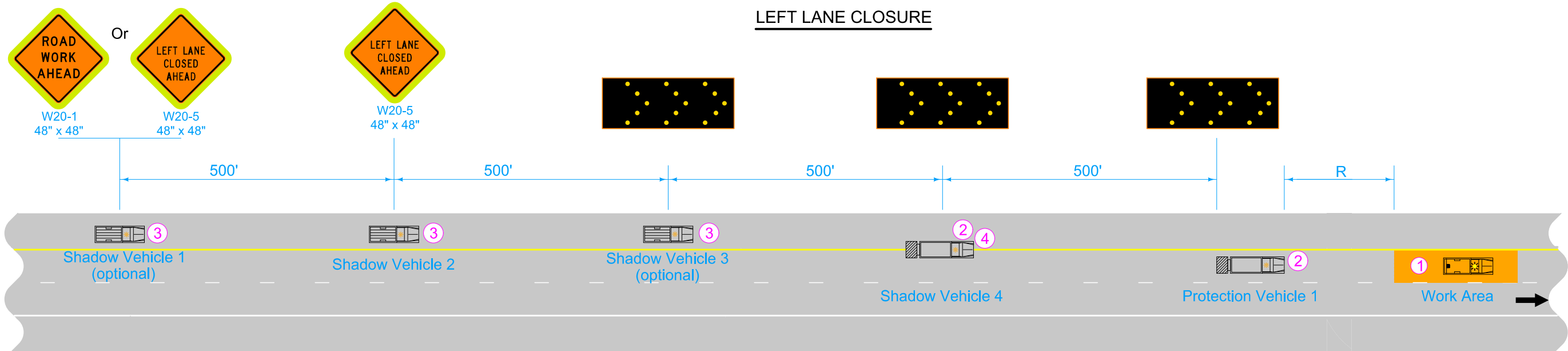
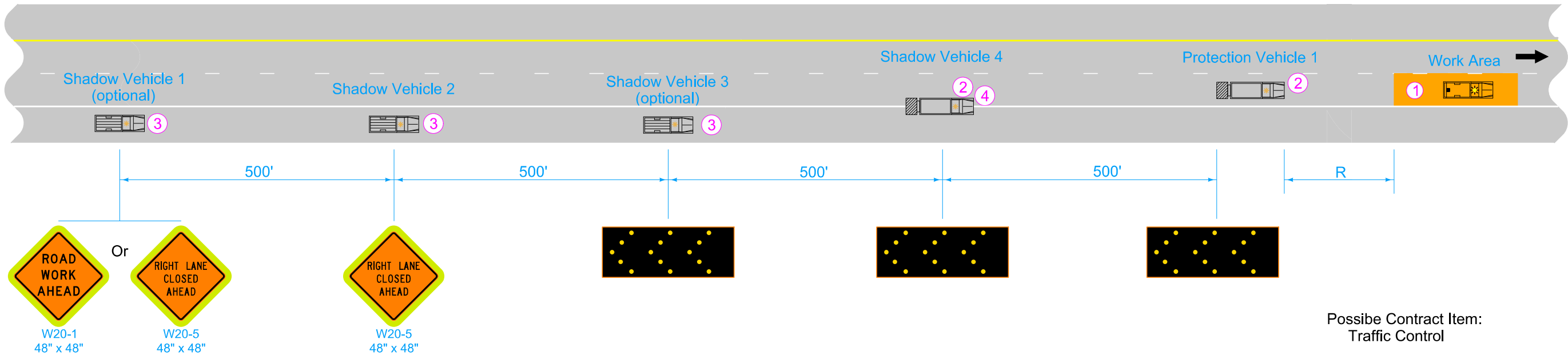


55 MPH OR GREATER
LEFT LANE CLOSURE



RIGHT LANE CLOSURE



Possible Contract Item:
Traffic Control

Equip all vehicles with an amber revolving light or amber strobe light. Fluorescent yellow green (FYG) sign background is required around all static signs.

This layout is intended for use with operations moving at least 500 feet within every 30-minute timeframe. For operations not meeting this criteria, use TC-415, TC-418, or TC-419.

LEGEND

- Arrow Board
- Truck-Mounted Attenuator (TMA)
- Direction of Traffic
- Work Area

Roll Ahead Distance (R)			
9900 to 22,000 lbs. GVW		Over 22,000 lbs. GVW	
Stationary	Moving 15 mph Max	Stationary	Moving 15 mph Max
200'	240'	160'	200'

- ① Keep work area as small as possible to safely accommodate the work taking place.
- ② Audible Warning System recommended. Iowa DOT maintenance crews see appendix A for times when an Audible Warning System is required.
- ③ Shadow vehicles 1, 2, and 3 may encroach into the travel lane when the shoulder is too narrow to drive on. Iowa DOT maintenance operations will use dump trucks/heavy duty vehicles for shadow vehicles 1, 2, and 3 when shoulder width and strength allow.
- ④ Adjust the lateral position of Shadow Vehicle 4 to create a taper unless doing so would negatively impact the work being performed.

INTERIM

STANDARD ROAD PLAN

REVISIONS: Added FYG background, reworded notes, adjusted work vehicle location.

APPROVED BY DESIGN METHODS ENGINEER

REVISION

1109-05-24

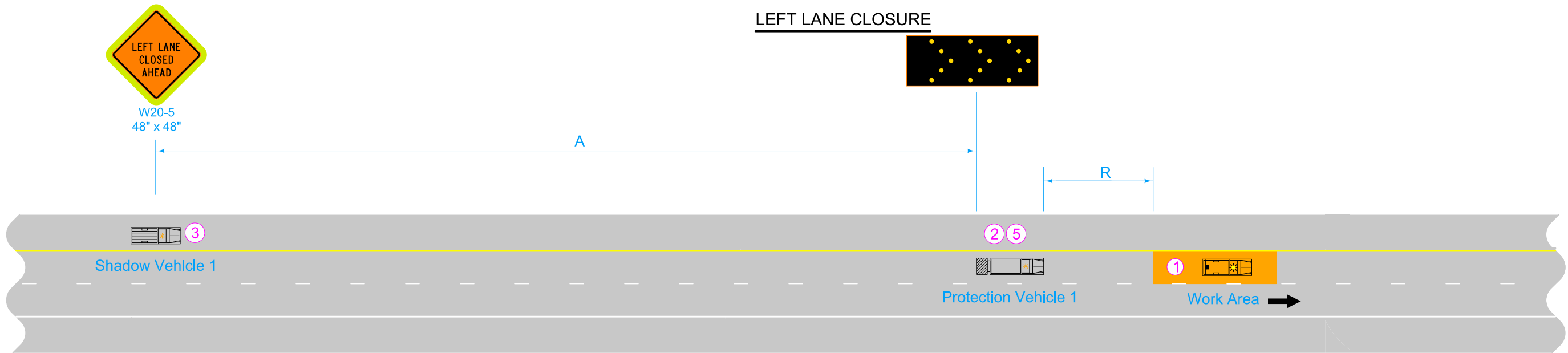
TC-431

SHEET 1 of 2

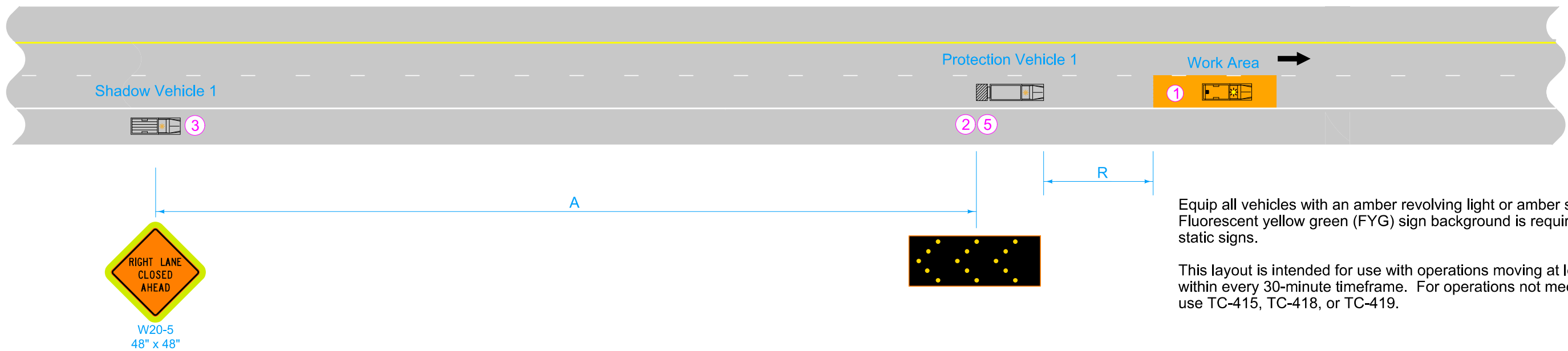
SLOW MOVING VEHICLE

OPERATING IN THE TRAFFIC LANE

50 MPH OR LESS
LEFT LANE CLOSURE



RIGHT LANE CLOSURE



Equip all vehicles with an amber revolving light or amber strobe light. Fluorescent yellow green (FYG) sign background is required around all static signs.

This layout is intended for use with operations moving at least 500 feet within every 30-minute timeframe. For operations not meeting this criteria, use TC-415, TC-418, or TC-419.

- ① Keep work area as small as possible to safely accommodate the work taking place.
- ② Audible Warning System recommended. Iowa DOT Maintenance crews, see Appendix A for times when an Audible Warning System is required.
- ③ Shadow vehicles 1 and 2 may encroach into the travel lane when the shoulder is too narrow to drive on. Iowa DOT maintenance operations will use dump trucks/heavy duty vehicles for shadow vehicles 1 and 2 when shoulder width and strength allow.
- ⑤ TMA recommended for speed limits of 30 mph or more.

LEGEND	
	Arrow Board
	Truck-Mounted Attenuator (TMA)
	Direction of Traffic
	Work Area

SPEED LIMIT (mph)*	Vehicle Spacing A	Roll Ahead Distance (R)			
		9900 to 22,000 lbs. GVW		Over 22,000 lbs. GVW	
		Stationary	Moving 15 mph Max	Stationary	Moving 15 mph Max
25-40	500'	100'	100'	75'	100'
45	750'	125'	175'	100'	150'
50	1500'	200'	240'	160'	200'

* Speed Limit refers to regulatory speed limit before road work.

INTERIM STANDARD ROAD PLAN	REVISION	
	11	09-05-24
REVISIONS: Added FYG background, reworded notes, adjusted work vehicle location.		TC-431
APPROVED BY DESIGN METHODS ENGINEER		SHEET 2 of 2
SLOW MOVING VEHICLE OPERATING IN THE TRAFFIC LANE		