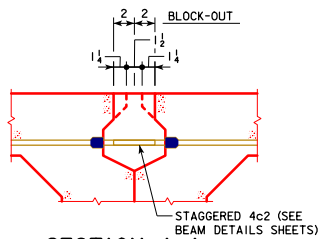
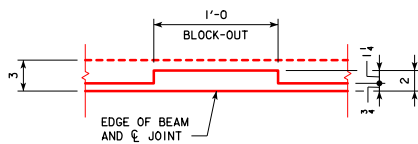


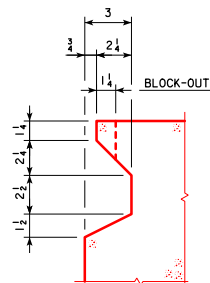
DETAIL A



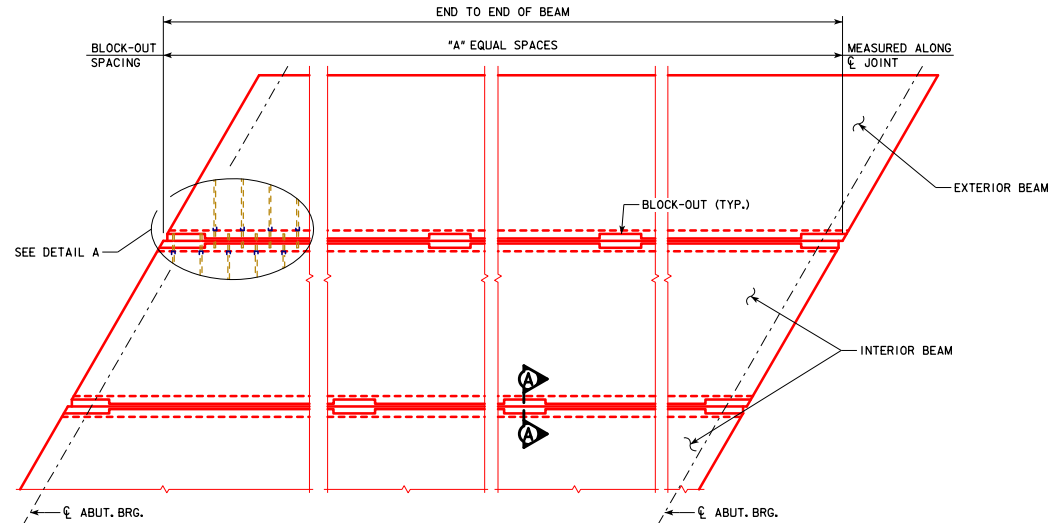
SECTION A-A



KEYWAY BLOCK-OUT DETAIL



KEYWAY DETAIL



PARTIAL PLAN
(30° SKEW SHOWN, 0° SKEW AND 15° SKEW SIMILAR)

KEYWAY BLOCK-OUT DATA	
SPAN (FT.)	*A* EQUAL SPACES
30	4
40	4
50	4
60	6
70	6

KEYWAY JOINT PREPARATION NOTES:

KEYED JOINT SURFACES OF CONCRETE BOX BEAMS FOR LONGITUDINAL UHPC JOINTS SHALL RECEIVE A TEXTURED FINISH CONSISTING OF MICRO-TEXTURE AND MACRO-TEXTURE.
 JOINT SURFACES SHALL BE TEXTURED TO "CONCRETE SURFACE PROFILE 6" OR ROUGHER, AS ESTABLISHED BY THE INTERNATIONAL CONCRETE REPAIR INSTITUTE (ICRI). JOINT TEXTURE MAY BE ACHIEVED BY ONE OR MORE OF THE FOLLOWING MEANS:

- MEDIA BLASTING
- USE OF A TEXTURED FORMLINER
- USE OF A FORM RETARDER AT THE JOINT SURFACE, FOLLOWED BY PRESSURE WASHING AFTER INITIAL SET TO PROVIDE AN EXPOSED AGGREGATE FINISH
- OTHER MEANS, SUBJECT TO ENGINEER'S APPROVAL

IN ADDITION TO THE ABOVE JOINT PREPARATION REQUIREMENTS, THE REQUIREMENTS OF SECTION 2403.03,1, OF THE STANDARD SPECIFICATIONS SHALL APPLY (INCLUDES SANDBLAST AND AIR BLAST CLEANING OF JOINT SURFACES).
 KEYWAY SURFACES SHALL BE WETTED TO A SATURATED SURFACE DRY CONDITION PRIOR TO CASTING THE UHPC JOINT.
 ALL WORK FOR PREPARATION AND TEXTURING OF KEYED JOINT SURFACES FOR LONGITUDINAL BEAM CONNECTIONS SHALL BE INCLUDED IN THE PRICE BID FOR THE BEAMS.

LATEST REVISION DATE	APPROVED BY BRIDGE ENGINEER	
		STANDARD DESIGN - 30'-0 ROADWAY, SINGLE SPAN CONCRETE BOX BEAM BRIDGES
		DECEMBER, 2016
BEAM KEYWAY AND BLOCK-OUT DETAILS		B30-32-16