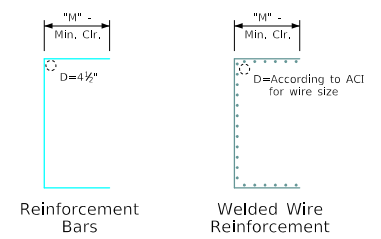
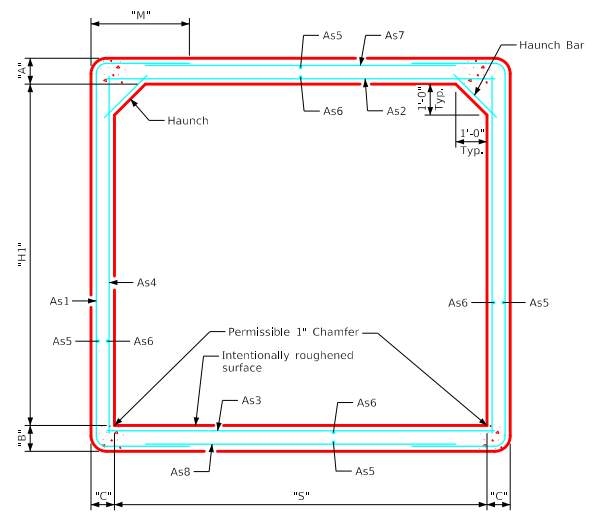


Variable Dimensions and Quantities for 12' Span Barrel Sections																						
Dimensions										Reinforcement Requirements										Weight (LB/FT)		
Size	Class	f'c (ksi)	Fill (FT)	S (FT)	H1 (FT)	A (IN)	B (IN)	C (IN)		As1		As2		As3		As4		As7/As8				
										Area (IN ² /FT)	Length	M	Area (IN ² /FT)	Length	Area (IN ² /FT)	Length	Area (IN ² /FT)	Length	Area (IN ² /FT)	Length		
12x11	1	5.0	2-6	12	11	10	10	9		0.74	18'-6"	3'-3"		1.08	12'-6"	1.17	12'-6"	0.24	11'-6"	0.24	11'-6"	6000
	2	5.0	7-12	12	11	10	10	9		1.02	18'-10"	3'-5"		1.46	12'-6"	1.55	12'-6"	0.24	11'-6"	0.24	11'-6"	6000
	3	5.0	13-15	12	11	12	12	10		0.93	18'-2"	2'-11"		1.23	12'-6"	1.29	12'-6"	0.29	11'-6"	0.29	11'-8"	7000
12x12	1	5.0	2-5	12	12	10	10	9		0.80	21'-10"	4'-5"		1.16	12'-6"	1.25	12'-6"	0.29	12'-6"	0.24	11'-6"	6225
	2	5.0	6-9	12	12	10	10	9		0.98	21'-2"	4'-1"		1.32	12'-6"	1.47	12'-6"	0.32	12'-6"	0.24	11'-6"	6225
	3	5.0	10-15	12	12	12	12	11		0.89	20'-0"	3'-4"		1.20	12'-6"	1.31	12'-6"	0.29	12'-6"	0.29	11'-10"	7600



Bent Bar Details

All dimensions are out to out.
 D = pin diameter (min.).
 Pin diameter may be increased if needed to maintain clear cover.



Typical Barrel Section

Notes:

1. Longitudinal reinforcement denoted as As5 and As6 must be placed in slab, floor, and walls and must be 0.06 in²/ft minimum.
2. All reinforcement lengths and areas are minimum requirements.
3. If reinforcing bars are substituted for welded wire reinforcing, dimension "M" and/or length of the As7/As8 reinforcement shall be adjusted to ensure adequate lap length is provided.
4. Weight of sections assumes a density of 150 pcf and squared corners.
5. See Sheets PPT-RCB G1-20 and PPT-RCB G3-20 for additional information and notes.

LATEST REVISION DATE	APPROVED BY BRIDGE ENGINEER		
		Precast Standard Design - Walkways and Trails Precast Reinforced Concrete Pedestrian Tunnel August, 2020	
		Precast Tunnel Details 12' Span Barrel Sections	PPT-RCB 12-20