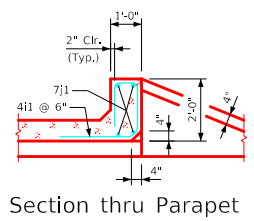
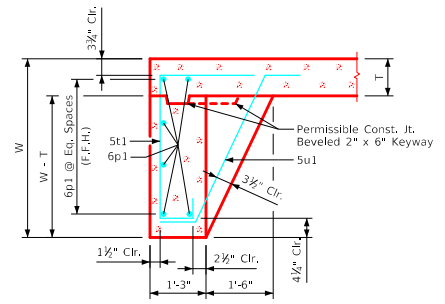


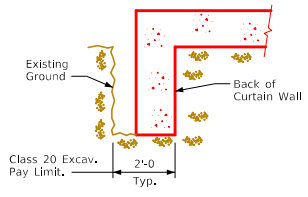
Revised 08-2022: Changed chamfer at top of interior walls to 3/4" x 3/4" (was 4" x 4").  
 ENGLISHDESIGNEDTRIPLECULVERTS.DGN - TRPWH 0-2-20 - THIS SHEET ISSUED 07-2020.



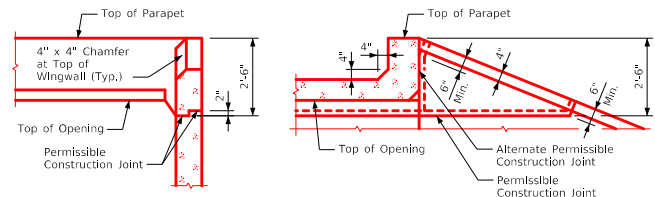
Section thru Parapet



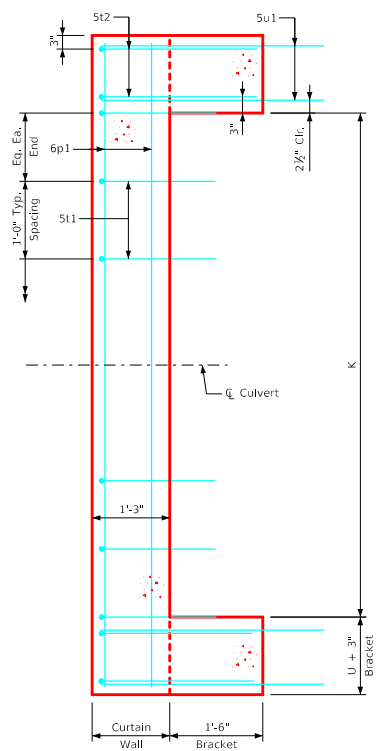
Section thru Curtain Wall



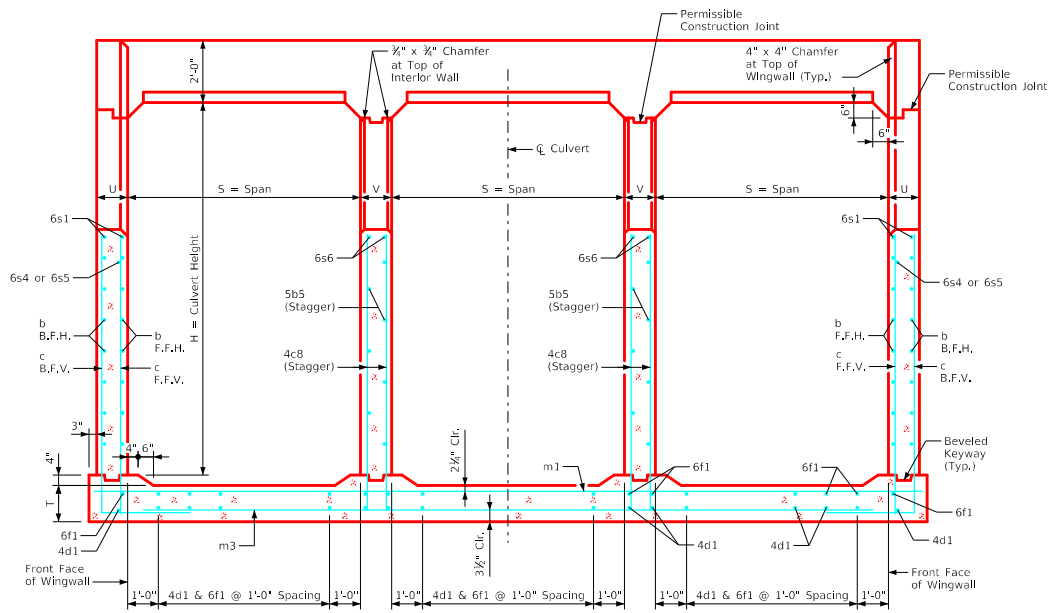
Curtain Wall  
Class 20 Excavation



Top of Wingwall Details



Curtain Wall Detail - Plan View  
(Apron is not shown)



Typical Cross Section - thru Headwall

- Notes:
1. See Sheet TRRCB G2-20 for General Notes, Specifications, and Design Stresses.
  2. For dimension table see Sheet TRPWH 0-1-20.

LATEST REVISION DATE August 2022 APPROVED BY BRIDGE ENGINEER		
	Standard Design <b>Triple Reinforced Concrete Box Culverts</b> July, 2020	
	Cross Section Details 0° Skew	TRPWH 0-2-20