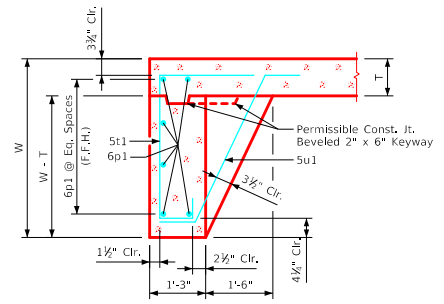
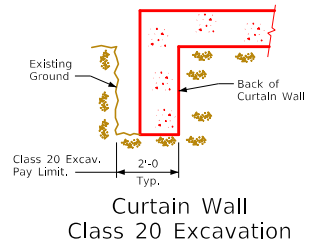


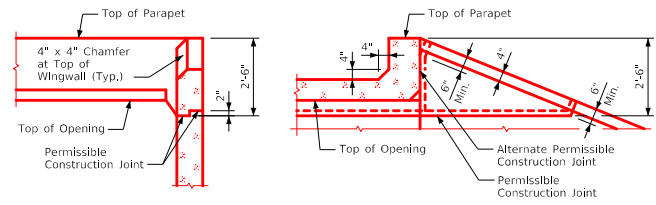
Section thru Parapet



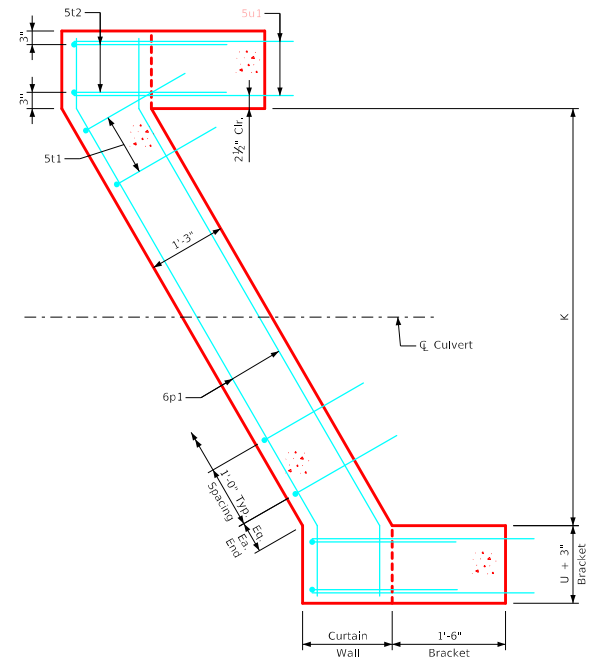
Section thru Curtain Wall



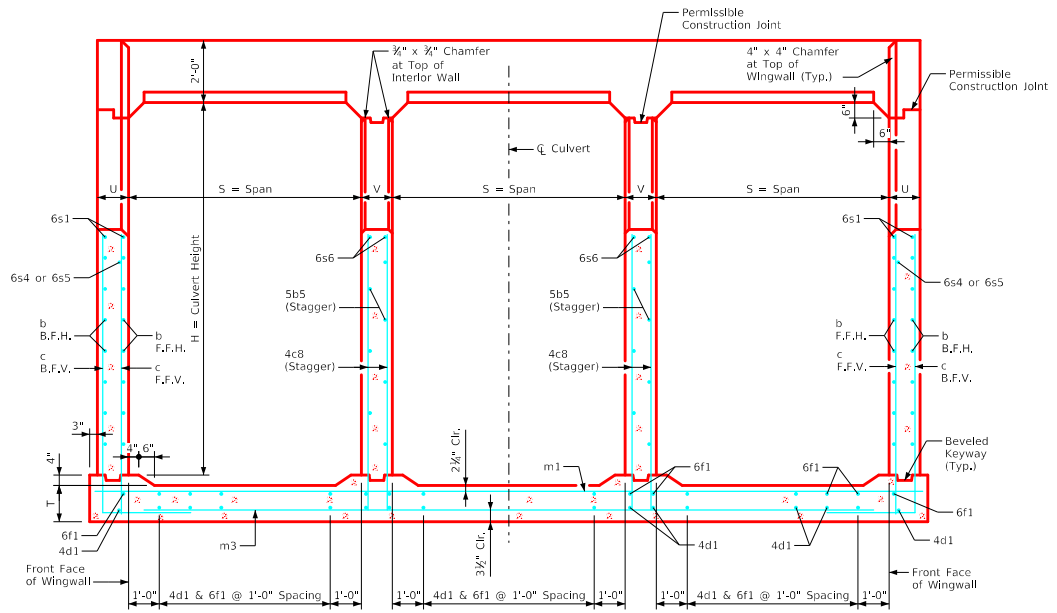
Curtain Wall Class 20 Excavation



Top of Wingwall Details



Curtain Wall Detail - Plan View
(Apron is not shown)



Typical Cross Section - thru Headwall

- Notes:
1. See Sheet TRRCB G2-20 for General Notes, Specifications, and Design Stresses.
 2. For dimension table see Sheet TRPWH 30-1-20.

LATEST REVISION DATE August 2022 APPROVED BY BRIDGE ENGINEER	
	Standard Design - Triple Reinforced Concrete Box Culverts Parallel Wing Headwalls July, 2020
	<div style="text-align: center;"> Cross Section Details 30° Skew </div> <div style="text-align: center;"> TRPWH 30-2-20 </div>

Revised 08-2022: Changed chamfer at top of interior walls to 3/4" x 3/4" (was 4" x 4").
 ENGLISH\RFDSignedTripleCulverts.dgn - TRPWH 30-2-20 - THIS SHEET ISSUED 07-2020