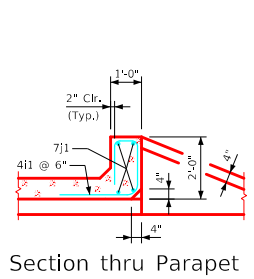
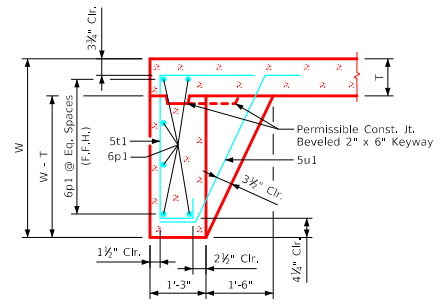


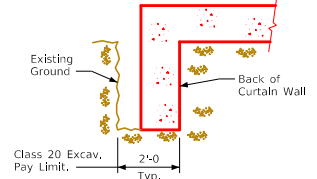
Revised 08-2022: Changed chamfer at top of interior walls to 3/4" x 3/4" (was 4" x 4").
ENGLISHDESIGNEDTRIPLECULVERTS.DGN - TRPWH 45-2-20 - THIS SHEET ISSUED 07-2020.



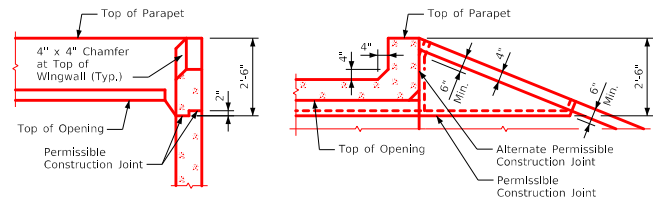
Section thru Parapet



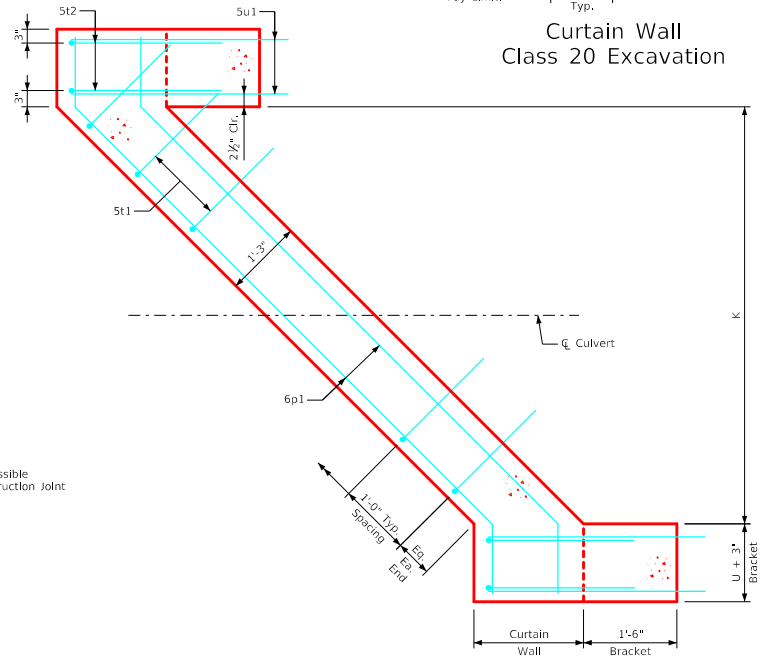
Section thru Curtain Wall



Curtain Wall
Class 20 Excavation

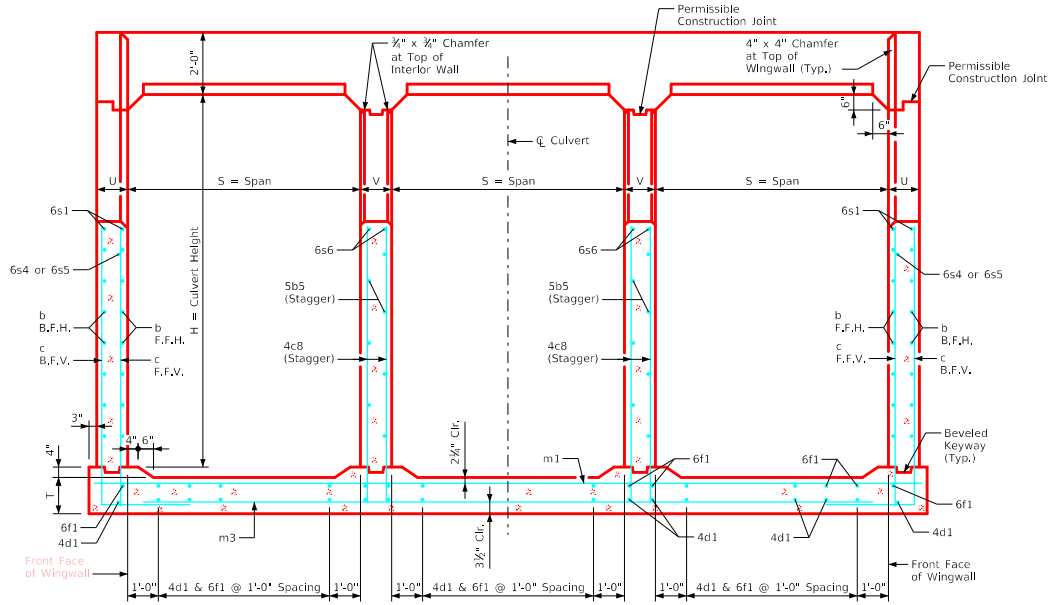


Top of Wingwall Details



Curtain Wall Detail - Plan View
(Apron is not shown)

- Notes:
1. See Sheet TRRCB G2-20 for General Notes, Specifications, and Design Stresses.
 2. For dimension table see Sheet TRPWH 45-1-20.



Typical Cross Section - thru Headwall

LATEST REVISION DATE August 2022 APPROVED BY BRIDGE ENGINEER		
	Standard Design - Triple Reinforced Concrete Box Culverts Parallel Wing Headwalls July, 2020	
	Cross Section Details 45° Skew	TRPWH 45-2-20