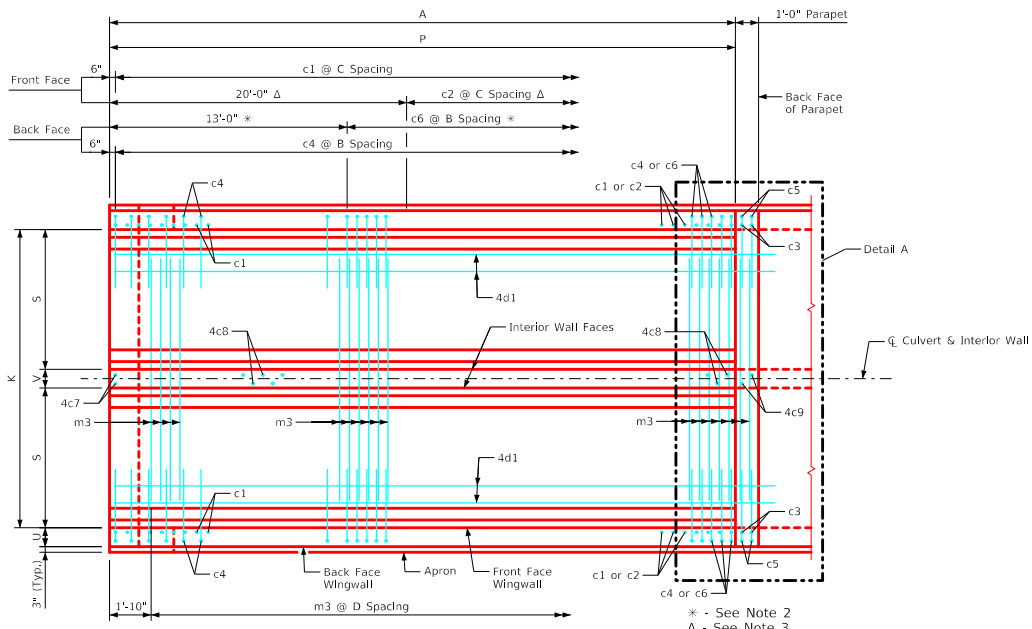
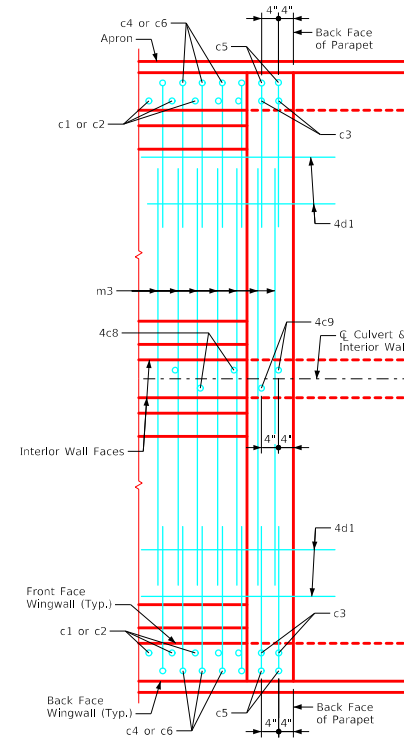


ENGLISHLRFD\DESIGNEDTWINCULVERTS.DGN - TWPWH 0-4-20 - THIS SHEET ISSUED 07-2020.



Plan View - Bottom Apron Reinforcing
(Curtain Wall Reinforcing not shown, See Sheet TWPWH 0-2-20)




Detail A

Notes:

1. Bar spacings and positions shown are similar for all sizes of headwalls in this standard.
2. Not applicable for 4' thru 5' height headwalls.
3. Not applicable for 4' thru 6' height headwalls.
4. For headwall dimensions and bar spacing see Sheet TWPWH 0-1-20.
5. Apron m3 bars are to be centered on \bar{C} culvert.
6. B.F.V. (c5), F.F.V. (c3) and interior wall both F.V. (c9) bars are approximately 4" from the back of parapet for all headwalls.

* - See Note 2
Δ - See Note 3

LATEST REVISION DATE	APPROVED BY BRIDGE ENGINEER	 Standard Design - Twin Reinforced Concrete Box Culverts	
		Parallel Wing Headwalls July, 2020	
		Bottom Apron Reinforcing 0° Skew	TWPWH 0-4-20