

Integrated Roadside Vegetation Management Plan



Buena Vista County, Iowa

Version 1.0 – May, 2017

Prepared by: Greg Johnson

Conservation Board Director/Weed Commissioner



Buena Vista County I.R.V.M. Statement of Support

The Buena Vista County Board of Supervisors, the Buena Vista County Conservation Board, and the Buena Vista County Engineer come together in cooperation, common goals and shared interest to manage roadsides in Buena Vista County by and through integrated roadside principals.

Consistent with Iowa Code Chapter 314.22, it is declared to be in the general public welfare of Iowa and Buena Vista County for the vegetation of its roadsides to be preserved, planted, and maintained to be safe, visually interesting, ecologically integrated, and useful for many purposes.

We realize that I.R.V.M will be beneficial to our roadside management goals, while being economically and environmentally beneficial.

We understand that working in unison towards improving roadside vegetation is the most efficient way to accomplish the goals of improved, safe, and weed free roadsides. This integrated approach will add to the ecologically sound habitat and natural beauty of Buena Vista County.

We hereby agree to manage Buena Vista County roadsides according to the provisions described within this management plan.

However, this is a flexible plan that requires common sense interpretations with changes as necessary to fit the ever-changing complex circumstances realized in roadside vegetation management.



Chairperson: Buena Vista County Board of Supervisors

5-16-17

Date



Conservation Director: Buena Vista County

5/15/17

Date



County Engineer: Buena Vista County

5-16-'17

Date

Buena Vista County Integrated Roadside Vegetation Management Plan

I. Preface

A. Version

Buena Vista County IRVM plan – Version 1.0 – May 2017

B. Contributors

Prepared by: Greg Johnson – Conservation Director/Weed Commissioner

Review and Comments: Conservation Board, County Engineer, Board of Supervisors

C. Table of Contents

Cover Page	Pages 1
Statement of Support	Pages 2
1. Preface	Pages 3-4
A. Version	
B. Contributors	
C. Table of Contents	
2. Executive Program Elements	Pages 5-6
A. Executive Summary	
B. Goals	
C. Program History	
D. IRVM Decision Making Process and Program Type	
E. Area Map (See Appendix D.)	
3. Jurisdictional Approval	Pages 7-8
A. Management	
B. Board of Supervisors	
C. Iowa Code and Administrative Rules-State Laws and Regulations	
D. Local Laws and Regulations	
E. Permits	
4. Program Organizational Structure	Page 8-9
A. Staff Organizational Chart	
B. Staffing Needs and Training	
C. Succession Plan	
5. Public Involvement	Pages 9
A. Partners/Stakeholders	
B. Education and Outreach	

C. Table of Contents (continued)

6. Inventory and Analysis	Pages 9-12
A. Natural Resources	
B. Equipment	
7. Program Operations	Pages 13
A. Annual Operations	
B. Work Area Types	
C. Vegetation Types for Specific Uses	
8. Methods	Page 13-15
A. Vegetation Establishment & Maintenance	
9. Material Procurement	Page 15-16
A. Sourcing	
B. Material Handling and Storage	
10. Budget	Page 16
11. Appendix	Page 17-27
A. 2003 B.O.S. resolution	
B. 2011 B.O.S. resolution	
C. 1996 IRVM Plan	
D. Map	
E. Roadside Manager Job Description	
F. Do not spray permit	
G. Spray Record Sheet	
H. 2017 Noxious weed resolution	

2. Executive Program Elements

A. Executive Summary

The Buena Vista County IRVM Program recognizes that it is in the general public welfare of Buena Vista County that the vegetation of its roadsides be preserved, planted and maintained to be safe, visually interesting, ecologically integrated, and useful for many purposes. The Buena Vista County Conservation Board in cooperation with the Buena Vista County Secondary Roads Department provides an annual roadside vegetation management program which is designed to promote the following:

- Maintenance of a safe travel environment by providing adequate line of sight at intersections, minimizing snow drifting, and removing potentially dangerous trees and other obstructions.
- Serve a variety of public purposes including drainage, erosion control, wildlife habitat, recreational uses, noxious weed control, scenic qualities, and sustenance of water quality.
- Emphasize the establishment of adaptable and long lived vegetation, often native species, matched to the unique environment found in and adjacent to the roadside.
- Be based on a systematic assessment of the conditions existing in roadsides, preservation of valuable vegetation and habitats in the area, and the adoption of a comprehensive plan and strategies for long-term, cost effective maintenance of roadsides.
- Build upon a public education program allowing input from adjacent landowners and the general public.
- Incorporate integrated roadside vegetation management with other state agency planning and program activities including the recreation trails program, scenic highways, open space, and tourism development efforts.

B. Goals

Establish and maintain a self-sustaining and visually interesting plant community within the county right-of-way that provides for public safety, controls weeds, reduces erosion, preserves and/or increases biodiversity, improves infiltration, maintains drainage patterns, provides habitat, and provides a reduction in long term maintenance costs.

Objectives:

- Promote, preserve, establish, and manage native plant materials whenever possible and appropriate
- Survey and maintain an updated inventory of the vegetative community and plant species found within the county right-of-way
- Determine and implement the best IRVM practices for maintaining the right-of-way for public safety and an economically and environmentally sustainable plant community
- Utilize controlled burns to meet management objectives
- Continually evaluate and monitor the effectiveness of implemented IRVM techniques
- Work with adjacent landowners, government officials, community groups and the public to implement and promote the IRVM program and roadside beautification projects
- Adopt and implement emerging trends in planning and management of roadsides
- Maintain safe travel corridors while enhancing the scenic qualities of the roadsides and their value as habitat.

- Make efficient and effective use of the roadside spraying program and promote the reduction of herbicide use whenever possible
- Stabilize road construction projects by seeding and providing adequate erosion control.
- Reduce the visibility hazards created by trees and brush on county highways, road intersections, and other areas through selective brush control and stump treatment.
- Provide support and endorse special roadway designations such as the Scenic Byways Program
- Utilize the UNI's TAP seed program and LRTF grants
- Address Section 317 of the Code of Iowa the "Noxious Weed Law", the Integrated Roadside Vegetation Management (IRVM) Manual, and address the provisions of Section 314 of the Code of Iowa.

C. Program History

Buena Vista County has operated a spot spray program for weed control for many years. Records indicate that in 1989 was the first discussion between the Conservation Board and Board of Supervisors to put the "Weed Department" under the control of the Conservation Board. A formal resolution (See appendix A.) was passed in 2003 to put the "Weed Department" under the control of the Conservation Board. Another resolution was passed in 2011 (See appendix B.) stating that the "Weed Department" was/is under the control of the Conservation Board.

Conservation Board records indicated that the first IRVM plan (See appendix C.) was drafted in 1996, it is unclear if the "Weed Department" was under the jurisdiction of the Conservation Board at that time or if the plan had been submitted to the Iowa DOT, however it was signed by the Board of Supervisors. This new plan may be the first official IRVM plan submitted to the Iowa DOT on a program that has been discussed for over 20 years.

Prior to 2003, it is unclear how the program was operated and with what staff and equipment. Between 2003 and 2011 the "Weed Department" program was conducted by seasonal staff consisting of a Head Sprayer, Driver, and other seasonals as needed. In 2011 there was a change in seasonal staff for the Head Sprayer and Driver. Between 2011 and 2017 the same seasonal staff conducted the spot spray program for noxious weed control.

In the summer/fall of 2016 discussion was held between the Conservation Board and Director about hiring a full time Roadside Manager-Vegetation Specialist. When the Conservation Board's annual report was presented to the Board of Supervisors in the fall of 2016, it included the recommendation to hire a full time Roadside Manager to conduct an IRVM program. A budget was submitted to the Board of Supervisors that included wages for a full time manager and for equipment to increase the capacity of the program, this was approved in the spring of 2017.

The Conservation Board posted a job description/ad at the beginning of April 2017 for a Roadside Manager position. Interviews were held and a job offer was given in early May to a well-qualified candidate. Expected start date for Buena Vista County's new Roadside Manager is June 1st of 2017.

D. Decision Making Process and Program Type

The IRVM program is in control of the County Conservation Board while seeking input and maintaining an intra-department relationship with the County Engineer and Board of Supervisors.

Daily activities and short/long term goals will be coordinated between the Roadside Manager and Conservation Director.

Major projects, equipment needs, and brush removal will be coordinated between the Conservation Board and Secondary Roads Department.

E. Area Map

See appendix D.

3. Jurisdictional Recognition and Approval

A. Management

The Buena Vista County IRVM program will be managed by the Roadside Manager-Vegetation Specialist.

This position is under the control of the Buena Vista County Conservation Board, the Roadside Manager is under direct supervision of the Conservation Director/Weed Commissioner.

The Roadside Manager seeds all bare soil in a timely manner, decides what types of seed to use and when it should be planted, what types of soil prep work is needed, additional erosion control measures, management of native vegetation after establishment (burning, spraying, etc.). Administers roadside spraying program; determines what areas of the county are treated, what types of herbicides are used, what types of vegetation those herbicides are used on, and does Public Education programs as opportunities develop. (See Appendix E. for full job duties)

The budget for the IRVM program will be coordinated between the Roadside Manager and Conservation Director. Final approval will be made by the Conservation Board and Board of Supervisors.

B. Board of Supervisors

The Board of Supervisors approve the budget of the Conservation Board and the separate IRVM budget. The IRVM program is administered through the County Conservation Board which appropriates its budgetary funds as it sees fit.

Additionally, the Conservation Board hires the County Weed Commissioner with approval of the Board of Supervisors. Currently this is the Director of the Conservation Board but the Roadside Manager may be appointed in the future.

The Weed Commissioner meets monthly, during season, with the Board of Supervisors to update them on the program and receive input. The Weed Commissioner also presents the Board of Supervisors an Annual Report in the fall of each year that details the work activities of the year and issues that need to be addressed.

Statement of Support from the Board of Supervisors can be found on page 2 of this document.

C. Iowa Code and Administrative Rules-State Laws and Regulations

The following sections of Iowa Code pertain to the IRVM program in Buena Vista County:

Section 314.22 Integrated Roadside Vegetation Management

Section 314.21 Living Roadway Trust Fund

Section 314.17 Mowing Law –No mowing before July 15th

Section 314.19 Reseeding Open Ditches

Section 317.11 Weeds on Roads -Harvesting of Grass

Section 318.3 Obstructions in ROW / Destruction of plants placed in ROW / Crops in ROW

Chapter 317 Iowa Weed Law – Noxious Weeds and Enforcement Procedures

D. Local Laws and Regulations

Local Laws, Regulations, and Policies pertaining to IRVM in Buena Vista County reflect that of the Iowa Code, as well as any other State and Federal Regulations that are specific to management activities that occur within the jurisdiction of the Buena Vista County's IRVM program.

Annually in March the Board of Supervisors will pass the "Weed Resolution" that stipulates what species have to be controlled in the County and by what date. This resolution is advertised in the local media as a Public Notice.

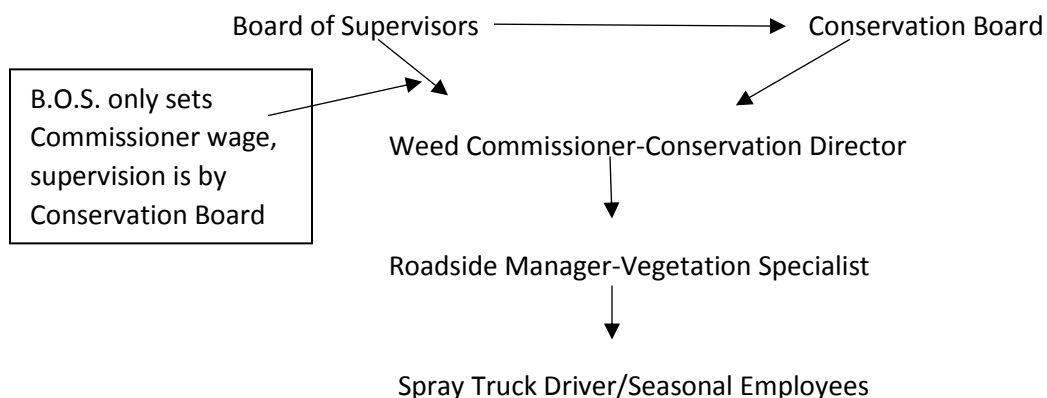
E. Permits

Permits pertaining to the roadside construction in Buena Vista County are handled through the Secondary Roads Department except the "Do Not Spray" permit. Most tile work and driveways are constructed by the Secondary Roads Department.

Local residents have the option to opt out of spraying on roadsides adjacent to their properties, this is obtained annually through the Conservation Board. Landowners are responsible for maintaining a weed free roadside if they choose to sign a "Do not Spray" permit. (See Appendix F. for permit)

4. Program Organizational Structure

A. Staff Organizational Chart



B. Staffing Needs and Training

The Weed Commissioner/Conservation Director and Roadside Manager is and will carry an up to date Iowa Pesticide License in category 1A and 6 at a minimum. Annual continued education for the license will be coordinated with Iowa State Extension and Iowa Department of Agriculture and Land Stewardship.

Further continued education will be sought out including the annual Weed Commissioners Conference, Iowa Association of County Conservation Board events, Association for Integrated Roadside Management events, Annual Prescribed Fire Refresher, and other events showing importance to the IRVM program.

Currently the roadside program consists of a Roadside Manager and a seasonal Spray Truck Driver. It is the responsibility of the Roadside Manager to conduct the program of noxious weed control. Future staff may be needed that include seasonal employees and the potential for additional full time staff.

C. Succession plan

When vacancies or additional positions are to be filled, the hiring process will be conducted by the Conservation Board and Director.

5. Public Involvement

A. Partners/Stakeholders

The Buena Vista County IRVM program will forge relationships with the Soil and Water Conservation District, NRCS, Iowa State Extension, City Governments, Glacial Trail Scenic Byway Committee, The Nature Conservancy, U.S. Fish and Wildlife Service, Little Sioux Watershed Conservation Partnership, Raccoon River Watershed Management Authority, UNI's Tallgrass Prairie Center, and other Local Conservation Organizations.

B. Education and Outreach

The Roadside Manager will provide educational presentations to public and private groups upon request. They will also create and maintain a social media page to promote the IRVM program as well as creating press releases for traditional media outlets.

6. Inventory and Analysis

A. Natural Resources

1. Tools

The Buena Vista County Conservation Board does not currently have ArcGIS, this could be a future purchase for the department. The county does have an IT department that can assist in the use of ArcGIS and the transfer of data from GPS units. Also available to the program is aerial photography from Pictometry that is updated every few years. This photography is high definition and will give you a 360 degree view. The program will utilize GPS units to inventory specific sites and keep track of progress. The Secondary Roads Department has a GPS camera that can also be utilized.

Paper spray records are kept indicating roads traveled each day as well as weather conditions, type of chemical used, amount of chemical used and the rate of application. Prior seeding project documentation is housed in the Secondary Roads Department, as the Conservation Board has no records of seeding projects prior to the implementation of this IRVM program.

2. Vegetation

The vegetation of Buena Vista County roadsides include a mix of warm and cool season species, dependent of location. Many ditches are dominated by brome grass while others have a great diversity of natives. In the northern part of the county along the Little Sioux River there are many prairie remnants adjacent to the ROW's and native species in the ROW's.

The only official roadside inventory that was conducted in Buena Vista County occurred in 1997. This document is only in paper format and is difficult to interpret and understand. It would be beneficial for the County to have a new inventory conducted that would include GIS maps and data points.

However, the Roadside Manager will conduct less official inventories on a daily basis while spraying, mowing, and cutting brush. They will look for existing native species, noxious weeds, and potential sites for re-establishment of native species.

3. Watersheds

Two major watersheds exist in Buena Vista County that are separated by the edge of the Des Moines Lobe of the Wisconsin Glacier. The Little Sioux River Watershed incorporates the northwestern parts of the County flows to the Missouri River. The Little Sioux Watershed Conservation Partnership was formed roughly 10 years ago that consists of U.S.FWS., Iowa DNR, local Conservation Boards, The Nature Conservancy, Soil and Water Conservation Districts, Pheasants Forever, and other local organizations. A Conservation Action Plan for the watershed has been wrote and shared with the U.S.F.W.S. in Washington, DC.

The rest of the County flows into the Racoon River Watershed that ends up in the Mississippi River. Recently, a Watershed Management Authority has been created in the watershed, 28E agreements have been signed by over 28 city and county governments.

4. Special Road Designations

Buena Vista County is home to 13 miles of the Glacial Trail Scenic Byway (formerly Old O'Brian Glacial Trail Byway). This unique 36 mile byway takes in a four-county area (O'Brien, Clay, Cherokee and Buena Vista) of "rolling plains of glacial drift" in northwest Iowa. Currently the Conservation Director sits on the Glacial Trail Byway Committee.

B. Equipment

Equipment List and Condition			
Equipment	Condition	Housed in Department	Have/Want/Budgeted
T60 New Holland Tractor	Good	Conservation	Have
2015 S590 Bobcat Skid Steer	Great	Conservation	Have
2010 John Deere Gator 825I	Good	Conservation	Have
Old Honda 300 four-wheeler	Poor	Conservation	Have
1992 Truax Drill FLX-88	Fair	Conservation	Have
Old Small Broadcast Seeder	Poor/Fair	Conservation	Have
3pt 6' four gang disc	Good	Conservation	Have
3pt 6' lawn rake	Good	Conservation	Have
3pt 6' 2017 Bush Hog rotary mower	Good	Conservation	Have
3pt tree planter (2)	Fair	Conservation	Have
3pt 6' box blade	Fair	Conservation	Have
Tongued homemade roller	Poor	Conservation	Have
Tongued 8' cultipacker	Poor	Conservation	Have
Draggable Spring-tooth harrow	Poor	Conservation	Have
Westendorf 8' landscaper	Good	Conservation	Have
3pt 100 gallon boom sprayer	Fair	Conservation	Have
Towable wood chipper	Poor	Conservation	Have
Homemade 50 gallon UTV sprayer	Fair	Conservation	Have
5' drag sections (2)	Fair	Conservation	Have
Quick-attach forks	Good	Conservation	Have
Quick-attach dirt bucket (2)	Good	Conservation	Have
Quick-attach Bobcat industrial grapple	Good	Conservation	Have
20 gallon ATV sprayers (2)	Fair	Conservation	Have
150 gallon skid ag tank Honda motor, chain pump for RX fire	Poor/Fair	Conservation	Have
500 gallon plastic water tank	Good	Conservation	Have
Honda 3" trash water pump	Good	Conservation	Have
Husqvarna 16" chainsaw	Fair	Conservation	Have
Sthil 18" chainsaw (2)	Fair	Conservation	Have
Sthil pole saw	Good	Conservation	Have
Sthil weed eaters	Good	Conservation	Have
GPS unit	Fair	Conservation	Have
1 gallon hand sprayers	Fair	Conservation	Have
Drip Torch (DNR Fire Cache) (2)	Fair	Conservation	Have
Nomex jumpsuits (DNR Fire Cache) (2)	Fair	Conservation	Have

Various Hand tools	Good	Conservation	Have
16" Tree shear M&M Engineered Products	New	Conservation	Budgeted FY 18'
Gooseneck Trailer		Cons./IRVM	Want
Chevy Spray Truck with injection and Raven control	Fair/poor	IRVM	Have/needs updated / budgeted in 5 year plan
1 Ton Pickup with flat bed		IRVM	Budgeted FY 18' / LRTF request
Bowie 1100 hydro mulcher/seeder		IRVM	Budgeted FY 18' / LRTF request
Laptop for Roadside Manager		IRVM	Budgeted FY 18'
UTV Fire Skid Unit		IRVM	Want
200 gallon fire skid unit for pickup		IRVM	Want
Skid spray unit for pickup		IRVM	Want
Four-wheeler/UTV		IRVM	Want
UTV /ATV spray unit		IRVM	Want
Fire PPE		IRVM	Want
Comm. Radios		Conservation/IRVM	Want
Vicon Pendulum Seeder		IRVM	Want
GIS software		IRVM	Want
Chemical and seed storage area		IRVM	Want
Panama Drip Torches (2) dedicated for IRVM		IRVM	Want
Work Saver Broadcast Seeder	Fair	Secondary Roads	Have
6615 John Deere tractor	Good	Secondary Roads	Have
Max125 Case IH tractor	Good	Secondary Roads	Have
Diamond rotary mower for shoulders	Good	Secondary Roads	Have
New Holland discbine mower	Good	Secondary Roads	Have
Brush mower/cutter on wheeled excavator	Good	Secondary Roads	Have
Other equipment is available on needed basis		Secondary Roads	Have

7. Program Operation

A. Annual Operations

The Roadside Manager and IRVM seasonals may be assigned to assist on other Conservation Board projects or programs.

Operations include but are not limited to:

- January-March: cutting trees and brush, repairing equipment, planning upcoming year's operations, ordering equipment and supplies, attending conferences and training events, spring burning, writing grants.
- April-September: Burning, seeding, erosion control projects, mowing, and spraying.
- October-December: Cutting trees and brush, burning, equipment maintenance, dormant seeding, monitoring sites, reviewing previous work.

B. Work Area Types

1. Rural

Most of the work by the IRVM program will be conducted in rural settings

- Rural adjacent agriculture – Native seed mixes when appropriate, spot spray, mow, burn
- Rural adjacent non-agricultural – Native seed mixes when appropriate, spot spray, mow, burn
- Rural adjacent homestead – Cool season grasses/lawn mix, spot spray, mow

2. Urban

Very little work is done currently in the urban interface

- Spot spraying as needed
- Address noxious weed complaints

C. Vegetation Types for Specific Uses

- Residential ROW's- turf grass, mowed areas in front of houses
- Non-Residential ROW – native prairie species– Areas where long term establishment and persistence of tallgrass prairie is deemed feasible by the Roadside Manager
- Miscellaneous ROW / Borrow Area / Easement – cool season grasses – Areas where long term establishment and persistence of tallgrass prairie is deemed not feasible by the roadside manager.

8. Methods

A. Vegetation Establishment and Maintenance

Most of the management methods utilized are outlined in the IRVM Technical Manual found at:

https://tallgrassprairiecenter.org/sites/default/files/irvm-technical-manual-2015-2_0_0.pdf

Rough site preparation will be conducted by the Secondary Roads Department with finish preparation and seeding to be conducted by the Roadside Manager. This will be accomplished using a variety of equipment available to the program.

Seed mixes and rates will follow DOT and the IRVM Technical Manual when possible. Rates and mixes may change based on seed availability and the specific site needs and objectives. The program will annually seek seed from UNI's TAP seed program.

- Seed Mixes and Rates

Natives

<i>Big bluestem 1.5 lbs/ac</i>	<i>Purple coneflower 1.6 oz./ac</i>
<i>Sideoats gramma 2 lbs/ac</i>	<i>Rattlesnake master 2.4 oz./ac</i>
<i>Canada wild rye 2.5 lbs/ac</i>	<i>Ox-eye sunflower 4 oz./ac</i>
<i>Little bluestem 2 lbs/ac</i>	<i>Roundheaded bushclover 1 oz./ac</i>
<i>Indiangrass 1.5 lbs/ac</i>	<i>Wild bergamot 0.6 oz./ac</i>
<i>Partridge pea 8 oz./ac</i>	<i>Foxglove penstamen 0.5 oz./ac</i>
<i>Leadplant 0.5 oz./ac</i>	<i>Large flowered penstemon 0.5 oz./ac</i>
<i>Butterfly milkweed 0.8 oz./ac</i>	<i>Prairie blazingstar 0.8 oz./ac</i>
<i>Swamp milkweed 1 oz./ac</i>	<i>Yellow coneflower 4 oz./ac</i>
<i>New England aster 0.3 oz./ac</i>	<i>Blackeyed susan 3 oz./ac</i>
<i>Canada milkvetch 0.8 oz./ac</i>	<i>Compass plant 0.5 oz./ac</i>
<i>White wild indigo 0.5 oz./ac</i>	<i>Stiff goldenrod 0.3 oz./ac</i>
<i>Purple prairie clover 4 oz./ac</i>	<i>Ohio spiderwort 0.8 oz./ac</i>
<i>Showy tick trefoil 0.5 oz./ac</i>	<i>Hoary vervain 0.5 oz./ac</i>
<i>Goldenrod 0.8 oz./ac</i>	<i>Rough dropseed 16 oz./ac</i>

Cover Crops

Cover Crop Oats 80 lbs/ac
Annual Ryegrass 10 lbs/ac
Timothy 1 lb/ac
Winter Wheat 100 lbs/ac
Timothy 1 lb/a

Cool Season/Lawn mix

Brome
Medium Red Clover 1 lbs./ac
Smooth Brome 10lbs/ac
Perennial Rye Grass 5 lbs/ac
Tall Fescue 2 lbs./a

Past reseeding projects were carried out by the Secondary Roads Department or a contractor. With the addition of a Roadside Manager this will be accomplished by the IRVM program. Seeding will be accomplished using Truax drills, broadcast seeders, and hydroseeders. The Conservation Board has budgeted for the purchase of a hydroseeder in Fiscal Year 18' dependent on LRTF grant funding. Paper fiber mulch and other seed will be budgeted out of the Secondary Roads Department.

Erosion control methods and solutions will be site specific, this will be accomplished in-cooperation between the Conservation Board and Secondary Roads.

Mowing of the ROW shoulders will be primarily done by the Secondary Roads Department with the IRVM Roadside Manager also assisting when time allows. Maintenance mowing and evaluation of native seeding's will be accomplished by the Roadside Manager.

Control of noxious weeds is an ever changing game dependent on species and objectives. The IRVM program will utilize UTV's, hand sprayers, and our spray truck with an injection system and Raven control unit for chemical control. Milestone is the most utilized chemical for broadleaf noxious weed control. In the past Streamline was utilized for brush management, we have since started to utilize Garlon for brush and tree management.

Brush and tree management will be conducted by both the IRVM program and Secondary Roads utilizing a tree shear on a skid loader, chainsaws, bush hog mower, chemicals, and a tree shredder on an excavator.

The IRVM program intends to utilize prescribed fire as a management tool whenever possible. The Conservation Board has four 130/190 trained staff. The Conservation Director has obtained his S131 "Squad Boss" certificate and the Roadside Manager is expected to obtain one also, as soon as a class is available locally. Burn plans, procedures, and record keeping will follow existing Conservation Board standards.

9. Material Procurement

A. Sourcing

Seed, herbicides, erosion control products, and other materials that are needed to complete projects, will be purchased locally if possible or through reliable vendors. Price and availability will factor into the determination of the source of materials. Additionally, seed will be requested from UNI's Tallgrass Prairie Center when available through the TAP seed program.

B. Material Handling and Storage

Currently the Conservation Board does not have a dedicated climate controlled space to store seed. In the past it has been ordered when needed. Chemicals for the "spray program" are stored at the Conservation Board's shop or the Secondary Roads shop in Storm Lake or with the spray truck. The Spray truck is housed at a Secondary Roads cold storage building in Truesdale, which is centrally located in the County. The Secondary Roads Department is in the process of designing a new shop/office, a climate controlled seed storage room may be designed into the building. Another option for the

program when the new Secondary Roads building is complete is for the IRVM program to “take over” the building in Truesdale and create a storage facility and office space for the Roadside Manager.

10. Budget

The IRVM program has a separate budget from the Conservation Board’s budget. Funds are allocated utilizing the Rural Basic tax levy. (See below for budget history)

Weed Department/ IRVM Program			
		Current FY	
Line title	2015-2016	2016-2017	FY 18
Salary-Commissioner	\$ 1,677.00	\$ 1,762.00	\$ 1,814.86
Wages-Driver/Seasonal	\$ 8,590.00	\$ 8,960.00	\$ 9,000.00
Wages-IRVM/Veg Specialist	\$ 1,000.00	\$ 1,000.00	\$ 40,000.00
Wages-seasonal	\$ 5,440.00	\$ 7,680.00	
FICA 7.65%	\$ 1,278.00	\$ 1,485.00	\$ 3,888.00
IPERS 8.93%	\$ 1,449.00	\$ 1,733.00	\$ 4,538.00
Employee Insurance			\$ 19,360.00
Chemicals/Herbicides	\$ 10,000.00	\$ 10,000.00	\$ 12,000.00
Fuels	\$ 5,000.00	\$ 5,000.00	\$ 5,000.00
Stationery & forms	\$ 50.00	\$ 50.00	\$ 100.00
Magazines, Books	\$ 50.00	\$ 50.00	\$ 100.00
Safety& Protective Supplies	\$ 250.00	\$ 250.00	\$ 500.00
Publication & legal notices	\$ 500.00	\$ 500.00	\$ 500.00
Postage/Mailing	\$ 50.00	\$ 50.00	\$ 50.00
Employee Mileage & Subsis	\$ 1,500.00	\$ 1,500.00	\$ 1,500.00
Telephone	\$ 30.00	\$ 30.00	\$ 500.00
Education/Training	\$ 400.00	\$ 400.00	\$ 500.00
Medical & Health Services	\$ 200.00	\$ 200.00	\$ 200.00
Motor Vehicle Repair	\$ 5,800.00	\$ 5,800.00	\$ 6,000.00
Dues/Memberships	\$ 50.00	\$ 50.00	\$ 100.00
Other Equipment			\$ 23,000.00
Office equip			\$ 1,000.00
MOTOR VEHICLE			\$ 35,000.00
Miscellaneous	\$ 450.00	\$ 450.00	\$ 500.00
Total Weed Dept.	\$ 43,764.00	\$ 46,950.00	\$ 165,150.86

11. Appendix

A. 2003 Board of Supervisors Resolution

This is the resolution adopted by the Board of Supervisors July 1, 2003, showing transfer of jurisdiction of the weed department to the Conservation Board:

Resolution 2003-07-01-C

WHEREAS, the Buena Vista County Board of Supervisors is permitted by Chapter 317 of the 2003 Code of Iowa to appoint a county weed commissioner to supervise the control and destruction of all noxious weeds in the county; and

WHEREAS, pursuant to Iowa Administrative Code (571) 33.30 (5)"a"(3) the cost of the county's weed control program may be included as a county conservation purpose for qualifying under the state's competitive REAP grants program provided the Board of Supervisors appoint either the county conservation director or a member of the county conservation board staff as the county weed commissioner; and

NOW THEREFORE, BE IT RESOLVED, that the Buena Vista County Board of Supervisors will continue to annually appoint the County Weed Commissioner to supervise its program for the control and destruction of all noxious weeds, and, effective July 1, 2003, does hereby transfer the weed department employees, to the governance of the Buena Vista County Conservation Board; and

BE IT FURTHER RESOLVED, effective July 1, 2003, as follows:

1. that Norm Lund, as an employee of the Buena Vista County Conservation Board, hereby shall continue in his appointment by the Buena Vista County Board of Supervisors as the Buena Vista County Weed Commissioner for the remainder of 2003;
2. that the Board of Supervisors will continue its responsibilities, pursuant to Chapters 317.3 and 371.4 of the 2003 Code of Iowa, with respect to directing the weed program, and, in cooperation with the Conservation Board, will set the wages for the Weed Commissioner and Deputy Weed Commissioner;
3. that the Buena Vista County Weed Commissioner is thereby given full authority to plan and accomplish an environmentally sound vegetative management program (see IAC (571) 33.50(5)"a"(3);
4. that weed spray certificates for Norm Lund and Dave Wiley will be transferred from Buena Vista County's license (#260) to the Buena Vista County Conservation license (#561), effective July 1, 2003;
5. that the Buena Vista County Conservation Board shall prepare the budget for the weed destruction program in consultation with the Board of Supervisors.

PASSED AND APPROVED, July 1, 2003.

B. 2011 Board of Supervisors Resolution

Resolution No. 2011-06-21-A

Whereas, the Buena Vista County Board of Supervisors is authorized and empowered to exercise any power and perform any function it deems appropriate to protect and preserve the rights, privileges, and property of the County or its residents and to preserve and improve the peace, safety, health, welfare, comfort, and convenience of its residents;

And whereas the Board has determined that it's in the best interest of the County and its administration to combine the weed department and the conservation department;

And whereas the Board at its April 12, 2011 authorized the merger of those two departments under the direction of conservation director, currently Nate Young

Therefore be it resolved:

1. The Weed Department be combined with the Conservation Department;
2. The Weed Commissioner and all other Weed Department employees shall and hereby are employees of the Conservation Department;
3. The Weed Commissioner shall be hired by the Conservation Board or its director, as determined by the Conservation Board, subject to approval of the Board of Supervisors;
4. The direct supervision of day-to-day activities of the Weed Commissioner and sprayers will be the director of the Conservation Board;
5. The wage or salary of the Weed Commissioner shall be set by the Board of Supervisors;
6. Duties of the Weed Commissioner shall include an obligation to report monthly to the Board of Supervisors during each season where activities of the Weed Commissioner occur; and,
7. The Conservation Department shall continue to submit yearly budgets to the Board of Supervisors for approval.

Approved this 21st day of June, 2011.


Dale Arends, Chair, Board of Supervisors

Attest: 
Susan K. Lloyd, Auditor

C. 1996 IRVM Plan

BUENA VISTA COUNTY INTEGRATED ROADSIDE VEGETATION MANAGEMENT (IRVM) PLAN

Statement of Purpose:

To promote the safety, beauty, and conservation of the roadways of Buena Vista County through the development and implementation of a program of Integrated Roadside Vegetation Management.

IRVM Plan:

Buena Vista County Integrated Roadside Vegetation Management (IRVM) is committed to a long term plan that:

1. Locates existing areas of desirable vegetation.
2. Evaluates areas to be managed.
3. Determines plant communities best fitted to the area.
4. Develops procedures that will encourage, enhance, re-establish or establish desirable plant communities.
5. Provides self-sustaining, diversified, visually interesting vegetation.
6. Promotes responsible weed control.
7. Keeps safety of public and an improved environment as priorities.
8. Recognizes disturbances to roadside vegetation and utilizes the most beneficial methods to prevent or correct undesirable situations.
9. Provides a forum for public education on IRVM.
10. Establishes an IRVM Community Advisory Committee of professional and lay people to assist in the facilitation of the public education program and to provide input for those in local government responsible for implementing the plan.

IRVM Goals:

1. Preserve and provide safe, functional corridors of travel throughout the county.
2. Utilize a long-term integrated management program that promotes desirable self-sustaining plant communities.
3. Encourage those plant communities that are native to the area through preservation and re-establishment whenever practical.
4. Recommend responsible, environmentally sound, and economically feasible weed control

- through spraying of herbicides by personnel who can identify weeds and desirable vegetation.
5. Use manual cutting, treatment of stumps, selective burning and mowing for brush control to maintain a safe roadway.
 6. Enhance the scenic qualities of the roadsides and their value as wildlife habitat.

IRVM Implementation:

The plan will be implemented through:

1. Inventory of all roadways to locate sites to be managed.
2. List the existing areas of desirable vegetation as well as those that need improvement.
3. Determine the management method needed by site.
4. Implement a program of management procedures, both temporary and permanent.
5. Evaluate the results periodically.

This is a flexible plan that requires common sense interpretations with changes as necessary to fit the ever changing, complex circumstances realized in vegetation management.

Approved by the Buena Vista County Board of Supervisors at Storm Lake, Iowa, this date:
4-9, 1996.


Lorna Burnside, Chairman

BUENA VISTA COUNTY

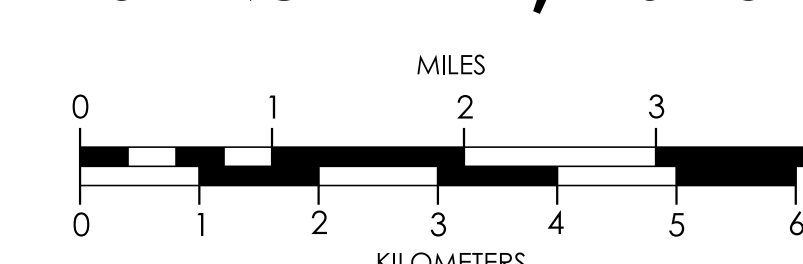
IOWA

Prepared By

The logo for the Iowa Department of Transportation (IOWA DOT) is located at the bottom right of the page. It features a stylized graphic of a road or path curving into the distance, followed by the text "IOWA DOT" in a bold, sans-serif font. The word "IOWA" is in dark blue and "DOT" is in a lighter blue.

WWW.IOWADOT.GOV/MAPS

JANUARY 1, 2016



INTERSTATE HIGHWAY
PRIMARY HIGHWAY-DIVIDED
PRIMARY HIGHWAY
PORTLAND CEMENT CONCRETE ROAD
ASPHALT ROAD
BITUMINOUS ROAD
GRAVEL ROAD
EARTHEN ROAD

INTERSTATE HIGHWAY
UNITED STATES HIGHWAY
STATE HIGHWAY
COUNTY HIGHWAY

INTERSTATE HIGHWAY
UNITED STATES HIGHWAY
STATE HIGHWAY
COUNTY HIGHWAY

RAILROAD
PIPELINE
AIRPORT
HYDROLOGY
BRIDGE

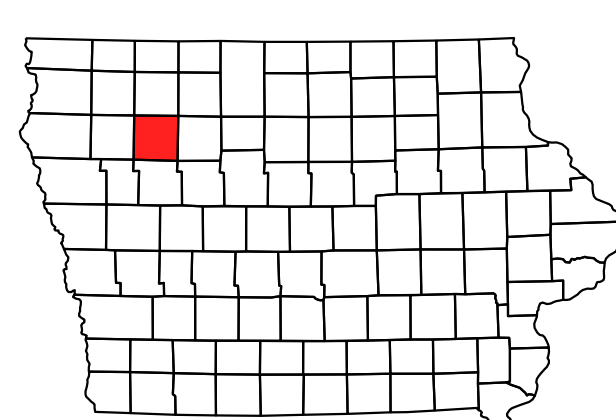
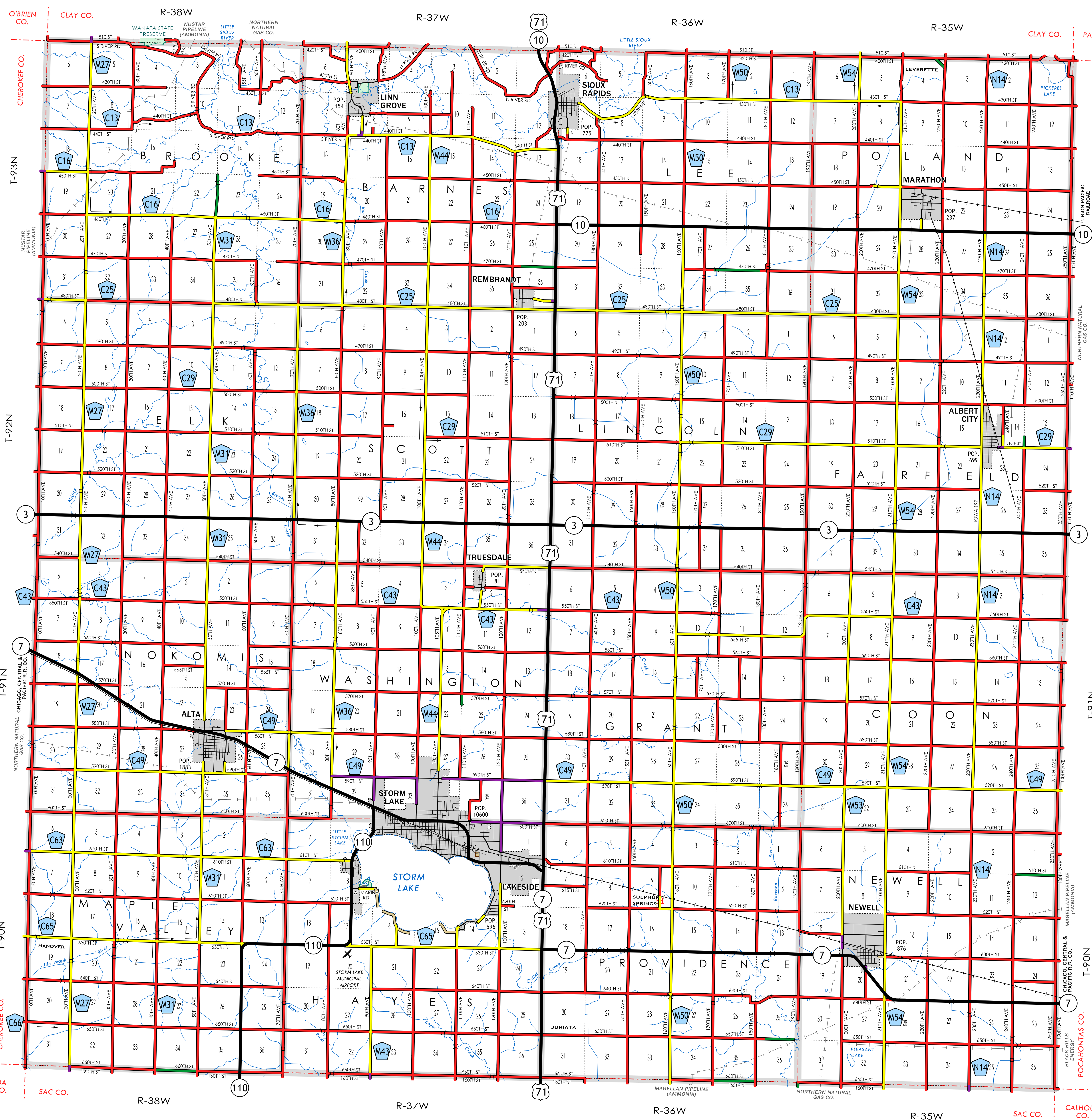
STATE BOUNDARY
COUNTY BOUNDARY
CORPORATE BOUNDARY
TOWNSHIP LINE
SECTION LINE
ROAD NAMES
UNINCORPORATED PLACE

ABNEY ROAD
ELWOOD

STATE PARKS

STATE INSTITUTIONS

FEDERAL LAND



E. Job Description

Buena Vista County Conservation Board

~Roadside Manager-Vegetation Specialist~

POSITION: Permanent Full-Time Roadside Manager-Vegetation Specialist position, under the direct supervision of the Director of Buena Vista County Conservation Board, Peterson, IA.

SUMMARY: The Roadside Manager-Vegetation Specialist shall administer, develop, plan, and conduct a program of vegetative management that seeks to control unwanted vegetation and promote desirable vegetation within Buena Vista County Rights-Of-Ways (ROW's) and Buena Vista County Conservation Board (BVCCB) managed areas, address Section 317 of the Code of Iowa the "Noxious Weed Law", the Integrated Roadside Vegetation Management (IRVM) Manual, and address the provisions of Section 314 of the Code of Iowa.

DUTIES AND RESPONSIBILITIES: Performs a wide variety of professional, technical, and field duties. These duties include all aspects of managing roadside vegetation and BVCCB vegetation/wildlife programs, including but not limited to:

1. Noxious and non-noxious herbaceous vegetation control (Chemical, Mechanical, Biological)
2. Management of woody vegetation in ROW's and BVCCB Area's (Chemical and Mechanical)
3. Seeding of ROW's and BVCCB area's (Hydroseeding, Drill, Broadcast)
4. Mowing of ROW's and BVCCB Wildlife area's
5. Habitat restoration and management (Prairies, ROW's, Woodlands, Wetlands)
6. On-going maintenance of existing and future plantings.
7. Operation, maintenance, and repairs of all agency equipment (tractor, vehicles, utv's, chainsaws)
8. Maintaining records (Chemical, daily work logs, equipment, etc.)
9. Writing IRVM and other grants
10. Assist in the investigation and addressing noxious weed complaints
11. Assist in the planning and conducting of prescribed burns on ROW and BVCCB area's
12. Effective communication with the County Engineer's office, Conservation Board, and the Public.
13. Compile monthly and annual work activity reports for tasks completed
14. Assist to the best of your ability the enforcement of all local, state, and federal laws pertaining to the operation of roadside vegetation management within Buena Vista County.
15. Assist with development and presentation of educational materials related to Roadside and BVCCB programs
16. Assist with inventory and data collection for prairie remnants, noxious weed areas and woody vegetation encroachment sites.

17. Organize and create management maps using GIS software.
18. Assist with production, harvest and processing of native prairie plant seeds for use in Roadsides and BVCCB areas.
19. Train and supervise seasonal and temporary employees
20. Attend and engages in state and regional conferences relating to the field as directed
21. Aside from roadside duties this individual may be assigned to work on other conservation properties and projects.
22. The position may be appointed the County Weed Commissioner.

SKILLS AND ABILITIES:

1. Ability to identify native trees, prairie plants, introduced and weed species.
2. Thorough working knowledge of prairie grass, forb, cover crop and cool season seed planting and care
3. Knowledge of prescribed fire and using fire to meet habitat management goals and objectives.
4. Thorough working knowledge of chemicals and their application rates.
5. Knowledge of erosion control techniques.
6. Ability to read, analyze, and interpret general business periodicals, professional journals, technical procedures or governmental regulations.
7. Ability to plan and prioritize work in an efficient manner.
8. Ability to work with minimal direct supervision
9. Ability to routinely work at remote/satellite work stations and locations
10. Ability to communicate effectively both orally and in writing.
11. Ability to plan work, think conceptually, analyze data, observe and evaluate, and make sound decisions and recommendations
12. Ability to apply knowledge and common sense to achieve work objectives.
13. Ability to adapt to a variety of job situations involving non-standard work hours and occasional weekends.
14. Knowledge of personal computer programs including Word and Excel for word processing and data management.
15. Ability to safely operate any equipment owned by BVCCB and ability to operate non-agency owned, job specific equipment, to achieve work objectives.
16. Ability to be insurable for driving under county insurance company policies

EDUCATION REQUIREMENTS: Graduated from an accredited college or university with an Associate's Degree and at least two (2) years of experience in roadside management, natural resource management, wildlife, forestry, prescribed fire, agriculture, fisheries, or a related field of study or a Bachelor's Degree in wildlife biology, ecology, forestry, agriculture or closely related subjects and at least

one (1) years of experience in roadside management, natural resource management, wildlife, forestry, prescribed fire, agriculture, fisheries, or a related field of study; or an equivalent combination of education and experience. Must possess or the ability to obtain an Iowa Commercial Pesticide License in category 6 and 1A, S130/S190 Wildland Firefighting Certification, CPR/First Aid, and a Class A CDL with combination and air-brake endorsement.

PHYSICAL DEMANDS/WORK ENVIRONMENT: The physical demands described here are representative of those that must be met by an employee to successfully perform the essential functions of this job. Reasonable accommodations may be made to enable individuals with disabilities to perform the essential functions. Ability to routinely talk, hear; use hands to finger, grasp, handle or feel; push or pull and reach with hands and arms; stand, walk, reach, sit, kneel, stoop, balance, climb, and routinely lift, carry, push and pull objects weighing 50-100 pounds for extended periods of time. Ability to operate various types of vehicles, tools, machinery and equipment including but not limited to; tractors, mowers, chainsaws, pickups, straight trucks, trailers, skid loaders, tree planters, prescribed fire equipment, hand tools, seeders, and chemical spray equipment. Ability to work outdoors in extreme hot, cold, rainy, snowy, and windy weather conditions and be exposed to chemicals, allergens, insects, dust, fumes, smoke, and loud noises. Normal hours of operation Mon. - Fri., 8:00 A.M. – 4:30 P.M. but is subject to change routinely based on weather conditions needed to accomplish work objectives.

Wage and Benefits: Starting wage is \$17.50/hour with a \$.50/hour increase every six months for two years, then standard county increases. Standard county benefits include paid single health insurance, competitive family insurance, vision, dental, IPERS, sick leave, and paid holidays.

Applicant will be subject to post offer, pre-employment drug and physical testing.

TO APPLY: Resume, cover letter, and standard county application are required. Applications and full job description is available online at www.bvcountyiowa.com or at the BVCCB Office.

SUBMIT APPLICATION PACKET TO:

Director
Buena Vista County Conservation
377 440th Street
Peterson, Iowa 51047

Or email to bvcc@webbwireless.net

DEADLINE: Must be received by April 21st, 2017 at 4:30 p.m.

Buena Vista County is an equal opportunity employer.

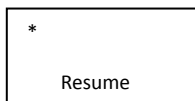
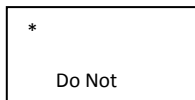
Job description reviewed and approved by the Buena Vista County Conservation Board on 02/17/17

F. "Do not Spray" Permit

"Do Not Spray" Permit

Date _____

2017 – * Orange Ribbon
Attach the ribbon where indicated.



Permit # _____

of Signs _____

Fee for Signs _____

I, _____, request permission to erect "Do Not Spray" signs along a Buena Vista County Secondary road at the following location. Please include at a minimum the township and section number with the location.

I agree to abide by the resolution for destruction of noxious weeds by order of the Buena Vista County Board of Supervisors pursuant to the provisions of Chapter 317.13 and 317.14 2011 Code of Iowa. (These conditions are outlined on the reverse of this permit application.) I also understand that sensitive garden plants, such as tomatoes, melons and grapes shall be planted in areas as far removed from the road as possible, especially where destruction of noxious weeds may be done on the opposite side of the road. Signs will be posted at the beginning and end of the "DO NOT SPRAY" area at the above listed location and shall be visible in the normal direction of travel. There is no charge for the permit and one set of signs will be furnished with each permit. Other suitable signs that have been approved by the county weed commissioner can also be used. (Additional signs can be purchased at the County Conservation Office for a cost of \$2.00 per set.) ***I further understand that this permit is only valid for one season and must be renewed each year.***

Signed _____

Address _____

Phone _____

Buena Vista County Weed Commissioner

Approved: _____

Date: _____

Approved Signs: _____

F. Spray records

SPRAY RECORD SHEET

Certified Applicator: _____ Certification Number _____ Phone _____

Customer Buena Vista County Address Peterson Phone 712-295-7985

Date and time pesticide was applied _____

Crop or other area treated _____

Number of acres or other units treated _____

Pest(s) controlled and developmental state _____

Severity of infestation, infection, etc. _____

Stage of crop growth (if applicable) _____

Soil condition (if applicable) _____
(wet, dry, cloddy)

Temperature _____ Humidity _____

Cloud Cover _____ Wind direction & Speed _____

Pesticide Used _____
(name of product and formulation)

How pesticide mixed (if applicable) _____
(active ingredient per gal, etc.)

Total amount of pesticide applied _____
(gals/lb per acre or other unit treated)

Specific location of application: Twp _____ Sec _____ 1/4 Sec _____
(if applicable)

G. 2017 Noxious Weed Control Resolution

RESOLUTION #2017-03-14-A A PUBLIC NOTICE DESTRUCTION OF NOXIOUS WEEDS & FINES ASSESSED

TO ALL PROPERTY OWNERS:

Be it resolved, by action of the Board of Supervisors of Buena Vista County, Iowa, that pursuant to the provisions of Chapter 317.13 and 317.14 2011 Code of Iowa, it is hereby ordered:

1-That each owner and each person in the possession or control of any land in Buena Vista County shall cut, burn, or otherwise destroy all noxious weeds thereon, as defined in this chapter, at such times in each year and in such manner as shall prevent said weeds from blooming or coming to maturity, and shall keep said lands free from such growth of any other weeds as shall render the streets or highways adjoining said land unsafe for public travel. Noxious weeds shall be cut or otherwise destroyed on or before the following dates and as often thereafter as is necessary to prevent seed production:

Group 1. June 1, 2017, for Leafy Spurge, Perennial Pepper Grass; Sour Dock; Smooth Dock, Sheep Sorrel, Tall Thistle and Musk Thistle.

Group 2. June 20, 2017, for Canadian Thistle, Russian Knapweed, Buckthorn, Wild Mustard.

Group 3. July 1, 2017, for Horse Nettle, Perennial Sow Thistle, Quack Grass, Butter Print, Puncture Vine, Cocklebur, Bull Thistle, Marijuana (Hemp), Sunflowers, Wild Carrot and Buckhorn Plantain.

2-That each owner and each person in possession or control of any lands in Buena Vista County infested with any noxious weeds including Quack Grass, Perennial Sow Thistle, Canadian Thistle, Field Bindweed, Horse Nettle, Leafy Spurge, Perennial Peppergrass, Russian Knapweed, Poison Hemlock, shall adopt a program of weed destruction described by the Weed Commissioner to destroy and will immediately keep under control such infestations of said noxious weeds.

3-That if the owners or persons in possession or control of any land in Buena Vista County fail to comply with the foregoing orders, the Weed Commissioner shall cause this to be done and the expense of said work, including costs of serving notice and other costs, if any, to be assessed against the real estate upon which the noxious weeds are destroyed.

4-That the County Weed Commissioner be and is hereby directed to cause notice of making and entering of the foregoing order by one publication each of the Official Newspapers of the County.

5-Anyone wishing not to have noxious weeds sprayed in any given area, he or she shall sign an agreement at the County Conservation Office and receive official signs to be posted on each side of the area designated and shall be responsible to destroy such weeds, all season.

PENALTY

Be it further Resolved, that failure to comply by the date prescribed in an order, pursuant to Chapter 317, for destruction of weeds, the weed commission may have the weeds destroyed with the costs assessed back to the owner, or may impose a penalty of \$10.00 per day for each day the owner of the land fails to comply.

Passed and approved this 14th day of March, 2017.

/s/ Tom Huseman, Chair-BV County Board of Supervisors...Attest: Susan K. Lloyd, County Auditor

Buena Vista County LRTF Funding History through FY 2017

DOT Project Number	Applicant	Award		FiscalYear Description	Type
90-11-LRTF-701	Buena Vista County	\$	4,500.00	1997 Inventory	County
90-11-LRTF-702	Buena Vista County	\$	6,376.00	1997 Seed	County
90-11-LRTF-801	Buena Vista County	\$	4,500.00	1998 Inventory	County

Total LRTF Funding Awarded FY1990 - FY2017	\$	15,376.00
--	----	-----------