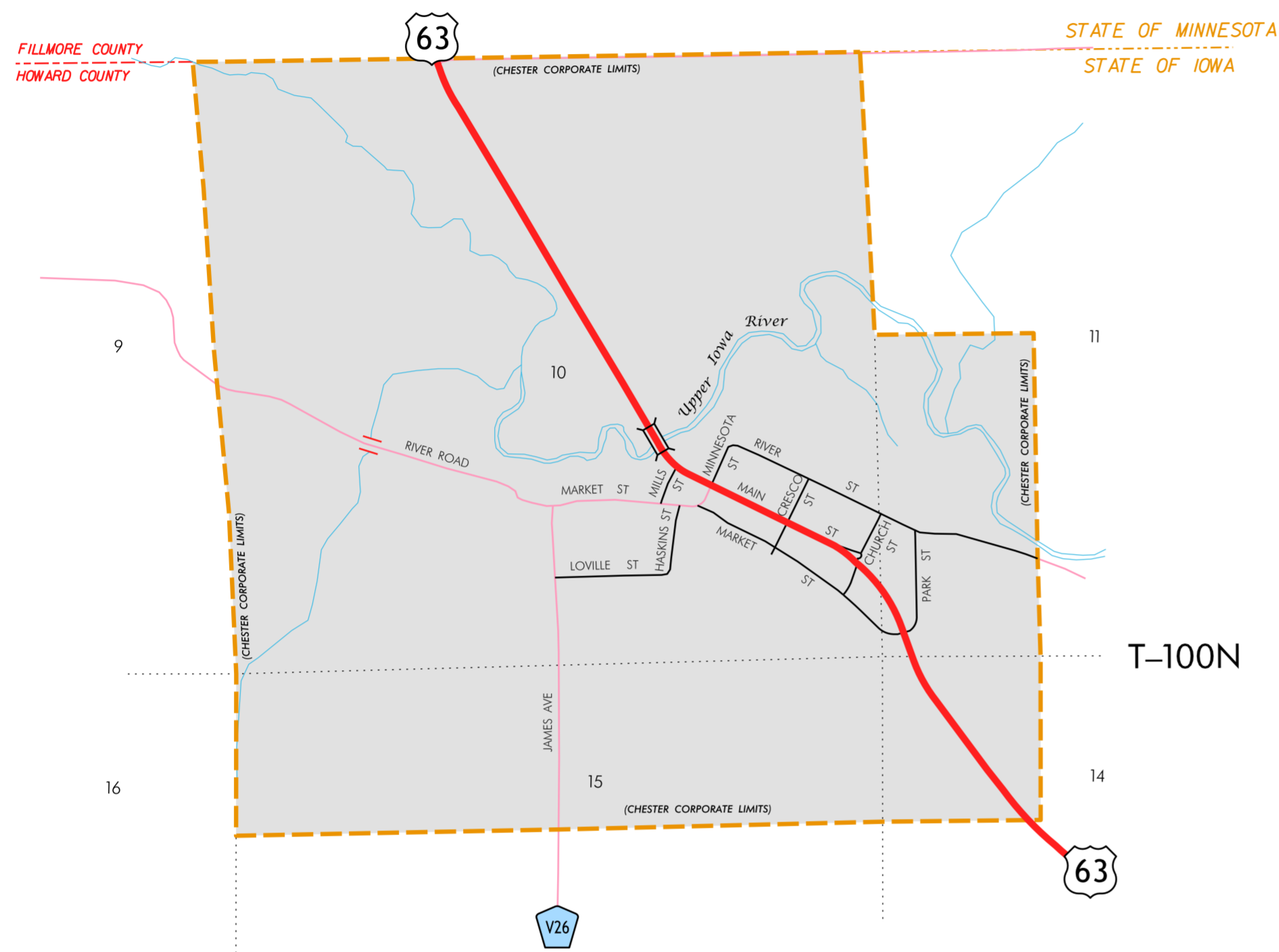


R-13W



STATE OF MINNESOTA  
STATE OF IOWA

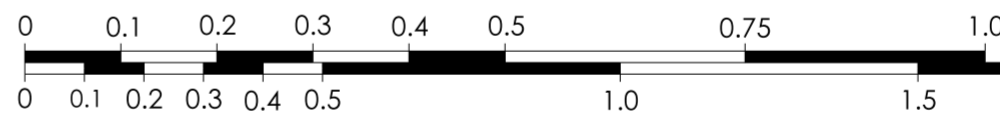


04-11-22

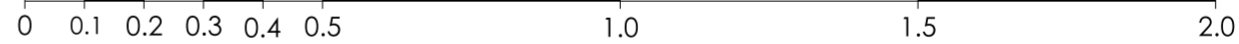
LEGEND

- INTERSTATE ROUTE
- FREEWAY OR EXPRESSWAY ROUTE
- U.S. NUMBERED ROUTE
- BUSINESS ROUTE
- STATE NUMBERED ROUTE
- UNSIGNED ROUTE
- COUNTY NUMBERED ROUTE
- SECONDARY ROAD OR ADJOINING CITY STREET
- CITY STREET
- PARK, INSTITUTION, OR FEDERAL ROAD
- RAILROAD
- CORPORATION LINE
- SECTION LINE
- CUL-DE-SAC
- SECTION, TOWNSHIP & RANGE NUMBERS

SCALE IN MILES



SCALE IN KILOMETERS



**HIGHWAY AND STREET MAP  
OF**

**CHESTER  
IOWA**

PREPARED BY

IOWA DEPARTMENT OF TRANSPORTATION  
TRANSPORTATION DEVELOPMENT DIVISION  
SYSTEMS PLANNING BUREAU

PHONE (515) 239-1664

IN COOPERATION WITH

UNITED STATES DEPARTMENT OF TRANSPORTATION  
FEDERAL HIGHWAY ADMINISTRATION

45-1277