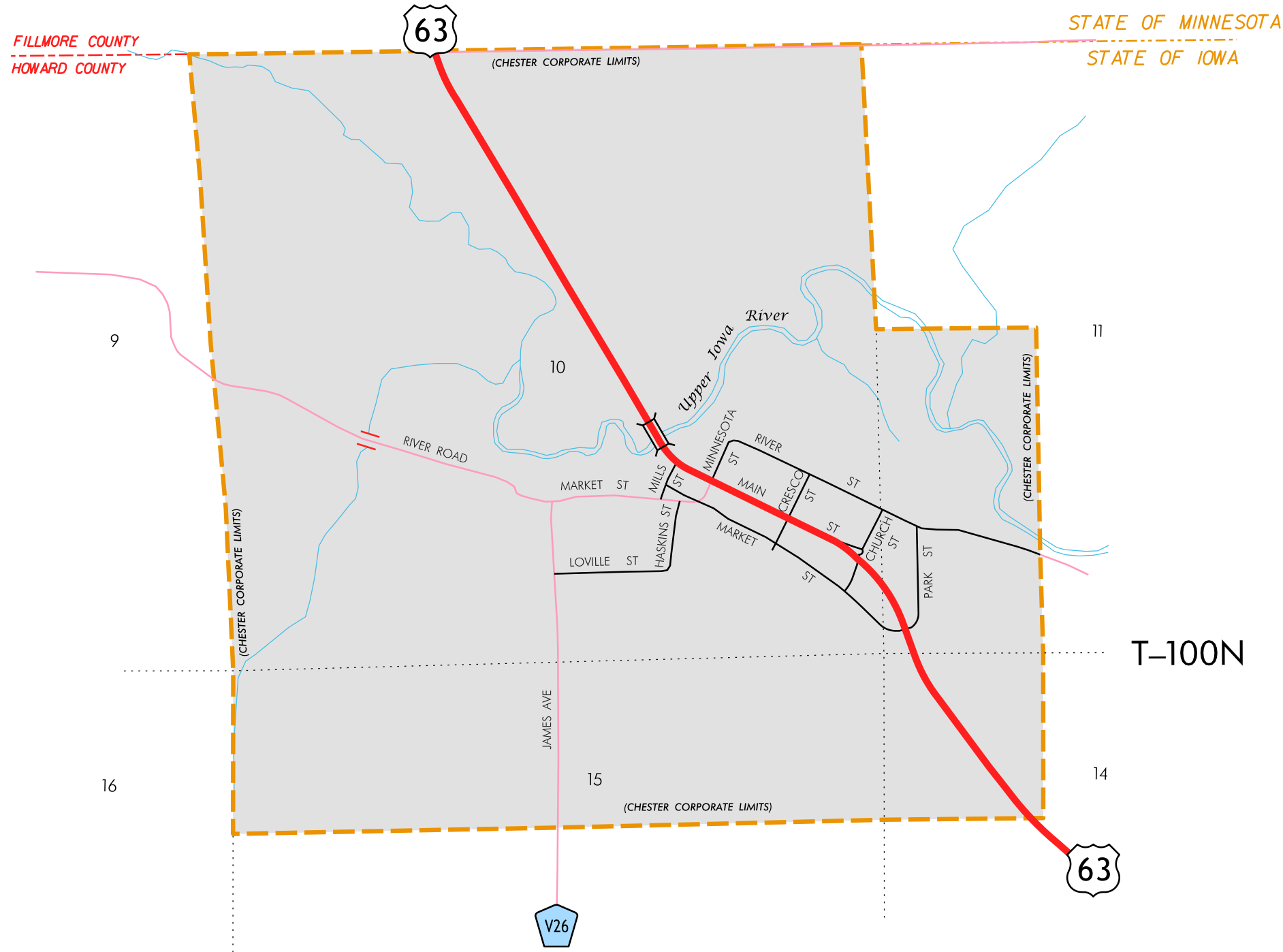
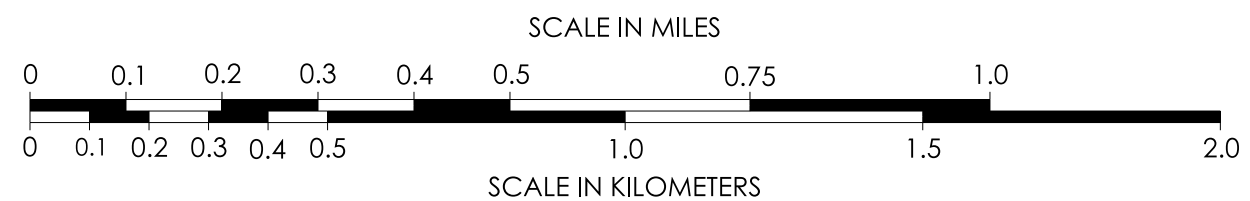


R-13W



LEGEND

- INTERSTATE ROUTE
- FREEWAY OR EXPRESSWAY ROUTE
- U.S. NUMBERED ROUTE
- BUSINESS ROUTE
- STATE NUMBERED ROUTE
- UNSIGNED ROUTE
- COUNTY NUMBERED ROUTE
- SECONDARY ROAD OR ADJOINING CITY STREET
- CITY STREET
- PARK, INSTITUTION, OR FEDERAL ROAD
- RAILROAD
- CORPORATION LINE
- SECTION LINE
- CUL-DE-SAC
- SECTION, TOWNSHIP & RANGE NUMBERS



**HIGHWAY AND STREET MAP
OF
CHESTER
IOWA**

PREPARED BY
 IOWA DEPARTMENT OF TRANSPORTATION
 PLANNING, PROGRAMMING, AND MODAL DIVISION
 OFFICE OF SYSTEMS PLANNING
 PHONE (515) 239-1664
 IN COOPERATION WITH
 UNITED STATES DEPARTMENT OF TRANSPORTATION
 FEDERAL HIGHWAY ADMINISTRATION

45-1277