

IOWA UTILITIES BOARD POTTAWATTAMIE COUNTY ELECTRICAL SERVICE AREA REFERENCE MAP

Information as of: 01-Nov.-2011

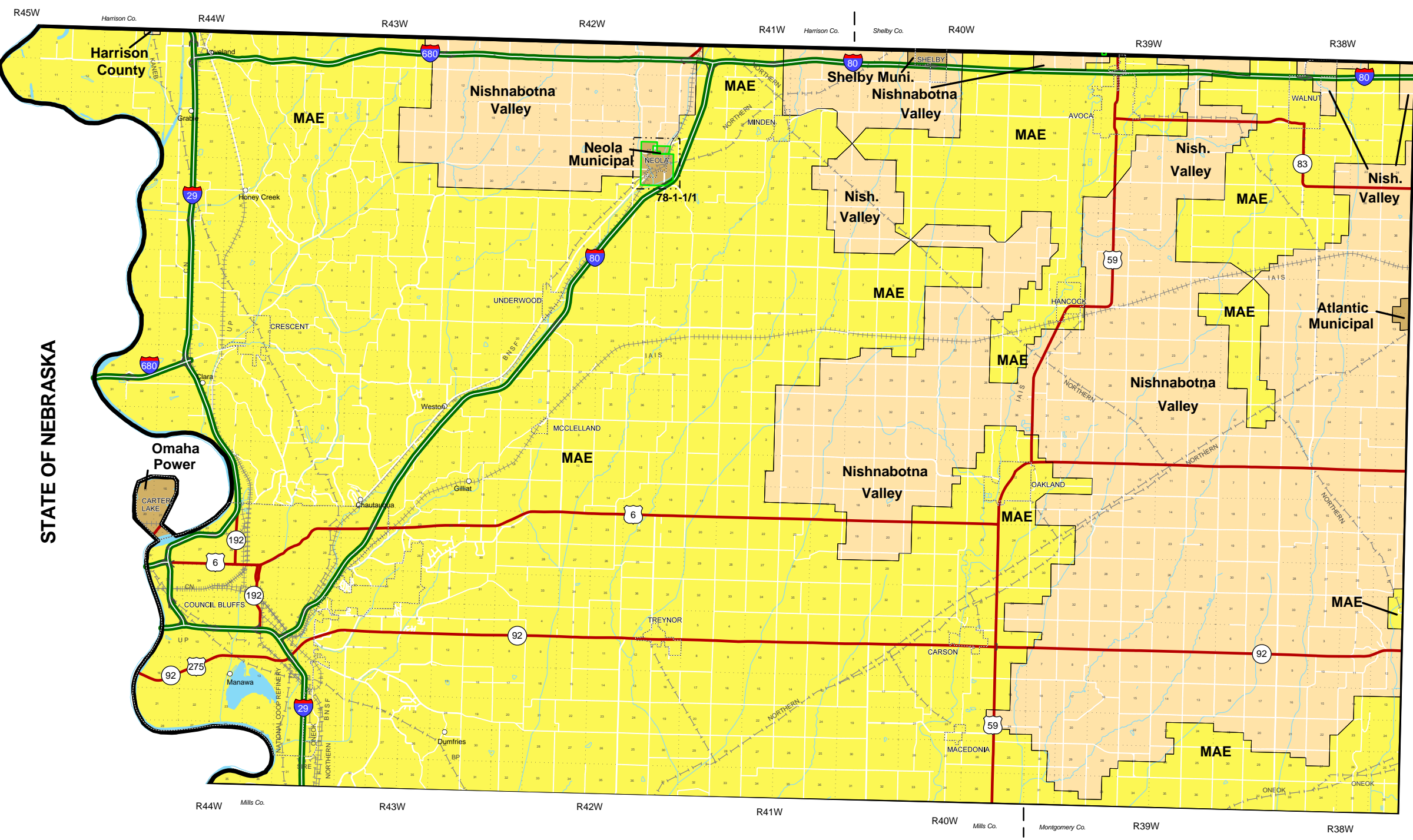
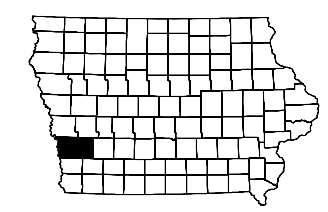
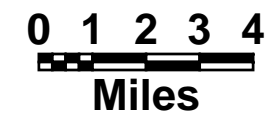
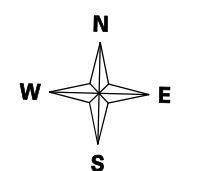
Legend

- New REC Boundary 1999-2011
- Other Boundary Changes 1999-2011
- Municipal
- Interstate Power and Light Company (IPL)
- MidAmerican Energy (MAE)
- REC
- Amana Society Service
- Section Lines
- Corporation Lines
- See Detail Map

Boundaries follow section, half section, quarter section, or natural barriers except as dimensioned.
For updates and detail maps visit:
www.state.ia.us/government/com/util/energy

Boundary Changes since 1999:
 SPU-00-03 T-77N, R-41W, Section 19 & 30
 T-77N, R-42W, Section 24 & 25
 from MidAmerican to Neola Municipal

 SPU-01-04 T-77N, R-41W, Section 19
 T-77N, R-42W, Section 24
 from Harrison (currently Nishnabotna) REC
 to Neola Municipal



STATE OF NEBRASKA