

LEGEND

COUNTY LINE	---
CIVIL TOWNSHIP	---
CORPORATION LINE	---
SECTION LINE	---
HIGHWAY BRIDGE SMALL	---
INTERMITTENT STREAM	---
NARROW STREAM	---
RAILROAD SINGLE OPERATING COMPANY	---
RAILROAD STATION	---
RAILROAD BELOW OVERHEAD	---
RAILROAD ABOVE SUBWAY	---
PIPE LINE OIL	---
RAILROAD GRADE CROSSING	---
CENTER OF CITY	---
CENTER OF COUNTY BEAT	---
DELMITING AREA (GENERALIZED)	---
UNIMPROVED ROAD (RURAL)	---
GRADED AND DRAINED ROAD	---
GRAVEL ROAD	---
BITUMINOUS SURFACED ROAD	---
PAVED ROAD	---
LEGAL ROAD NOT OPEN TO TRAFFIC	---
HIGHWAY WITH PARTIAL CONTROL OF ACCESS	---
HIGHWAY WITH FULL CONTROL OF ACCESS	---
DIVIDED HIGHWAY	---

Highway and Transportation Map CLARKE COUNTY IOWA

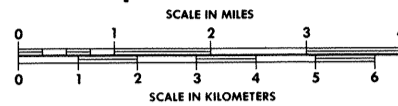


Prepared By
Iowa Department of Transportation

Phone (515) 239-1289

In Cooperation With

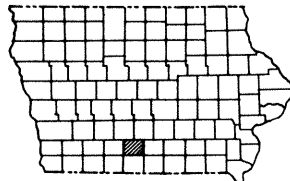
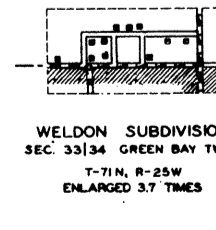
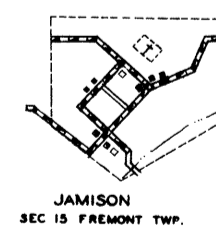
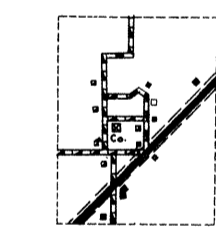
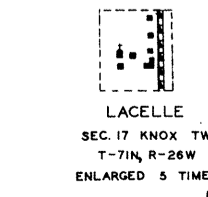
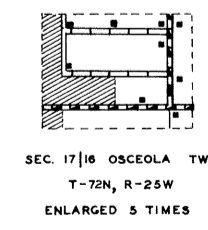
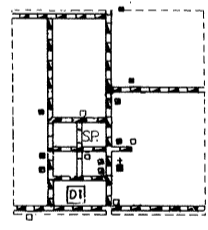
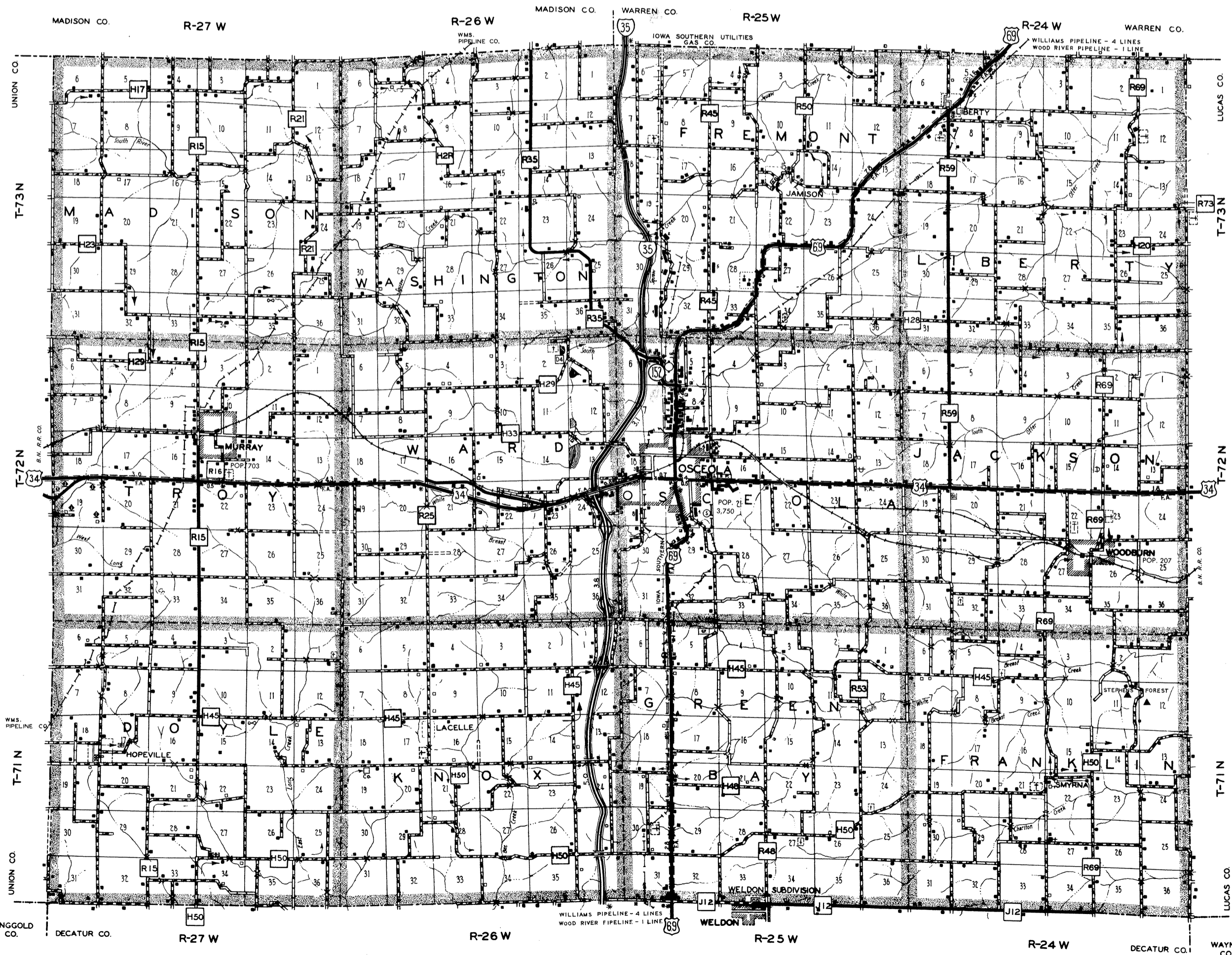
United States Department of Transportation



1986

LEGEND

FARM UNIT	---
DWELLING OTHER THAN FARM	---
ROWS OR GROUPS OF DWELLINGS	---
STORE OR SMALL BUSINESS ESTABLISHMENT	---
TOWN HALL OR COMMUNITY HALL	---
HIGHWAY GARAGE	---
SCHOOL OR OTHER EDUCATIONAL INSTITUTION	---
CHURCH OR OTHER RELIGIOUS INSTITUTION	---
CEMETERY	---
GAUGING OR PUMPING STATION	---
TANKS	---
QUARRY	---
UNITED STATES HIGHWAY	---
STATE HIGHWAY SYSTEM	---
COUNTY TRUNK SYSTEM	---
FEDERAL AID HIGHWAY SYSTEM	---
POINTS BETWEEN WHICH DISTANCES ARE MEASURED	---
PIPE LINE OIL	---
AIRPORT LIMITED FACILITIES	---
LANDING AREA OR STRIP	---
RACE COURSE	---
RIFLE CLUB	---
POWER SUBSTATION	---
COMBINED DWELLING AND STORE	---
INTERSTATE HIGHWAY	---
AUTO JUNK YARD	---
SANITARY LAND FILL	---
COUNTRY CLUB OR GOLF COURSE	---
BOOSTER STATION	---
GRAIN ELEVATOR	---
SMALL PARK (STATE) (COUNTY)	---



JANUARY 1, 1987