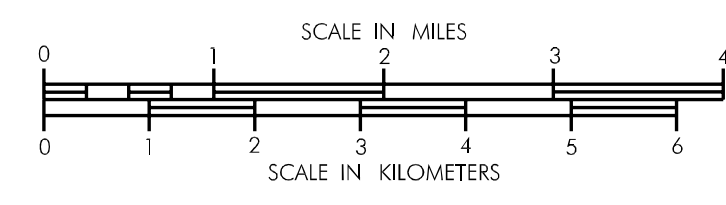


TRAFFIC FLOW MAP OF OSCEOLA COUNTY IOWA

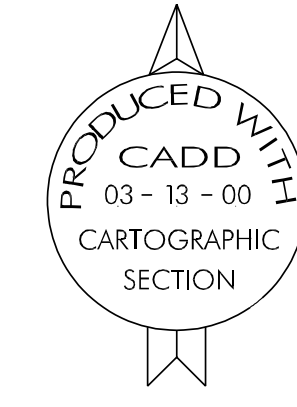
1999 ANNUAL AVERAGE DAILY TRAFFIC

Prepared By
**Iowa Department
of Transportation**
Phone (515) 239-1282
In Cooperation With

**United States
Department of Transportation**

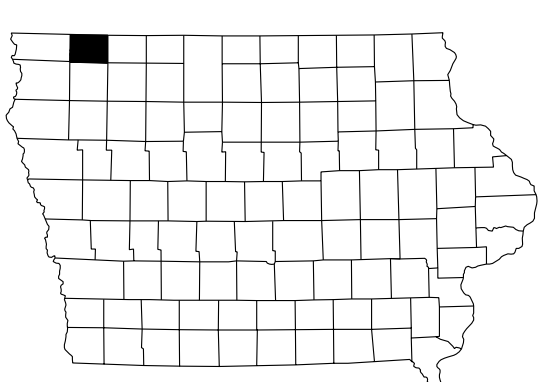
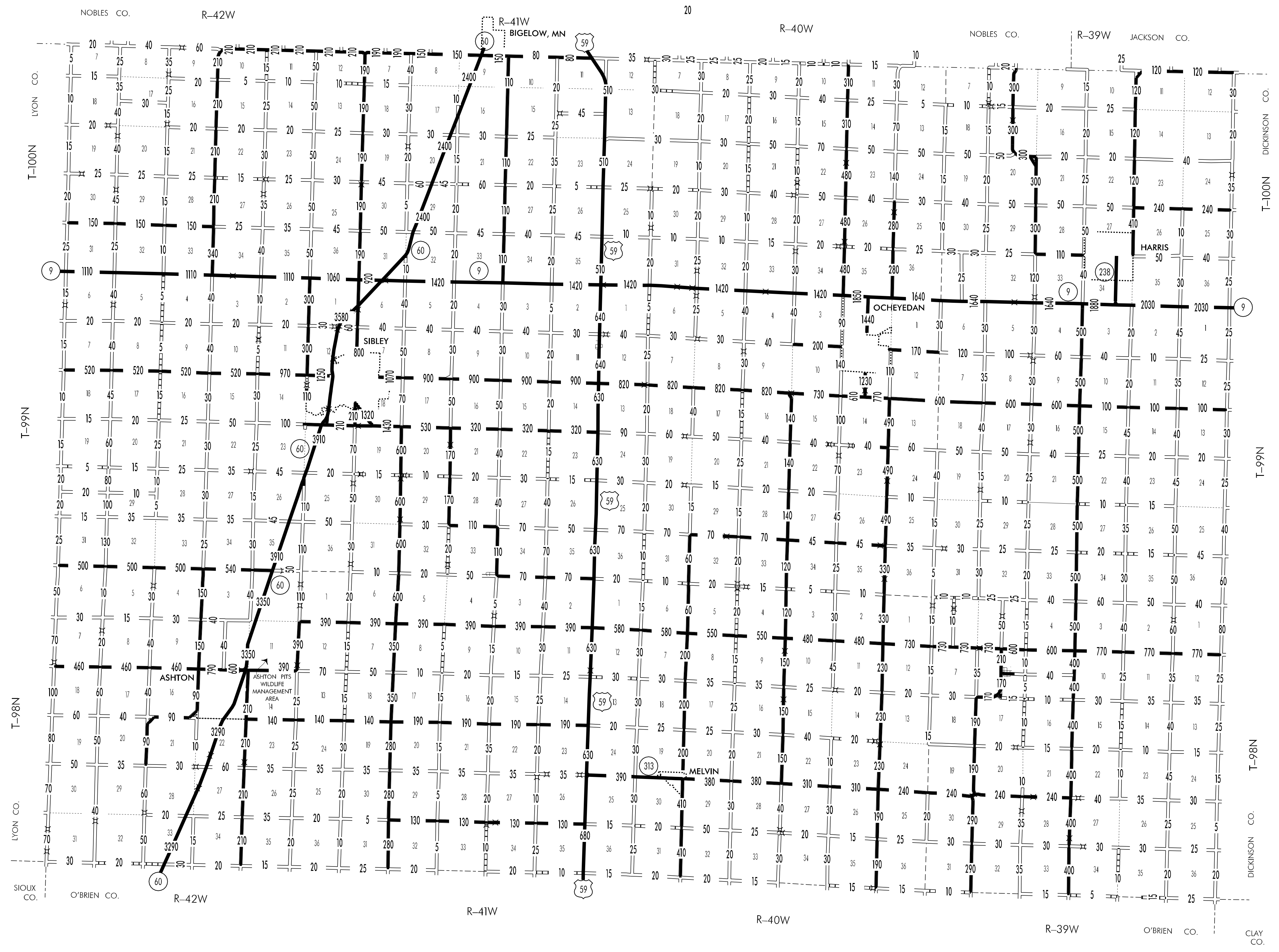
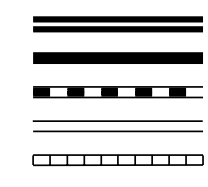


JANUARY 1, 2000



LEGEND

- DIVIDED HIGHWAY
- PAVED ROAD
- BITUMINOUS ROAD
- GRAVEL ROAD
- EARTH ROAD



1999
72