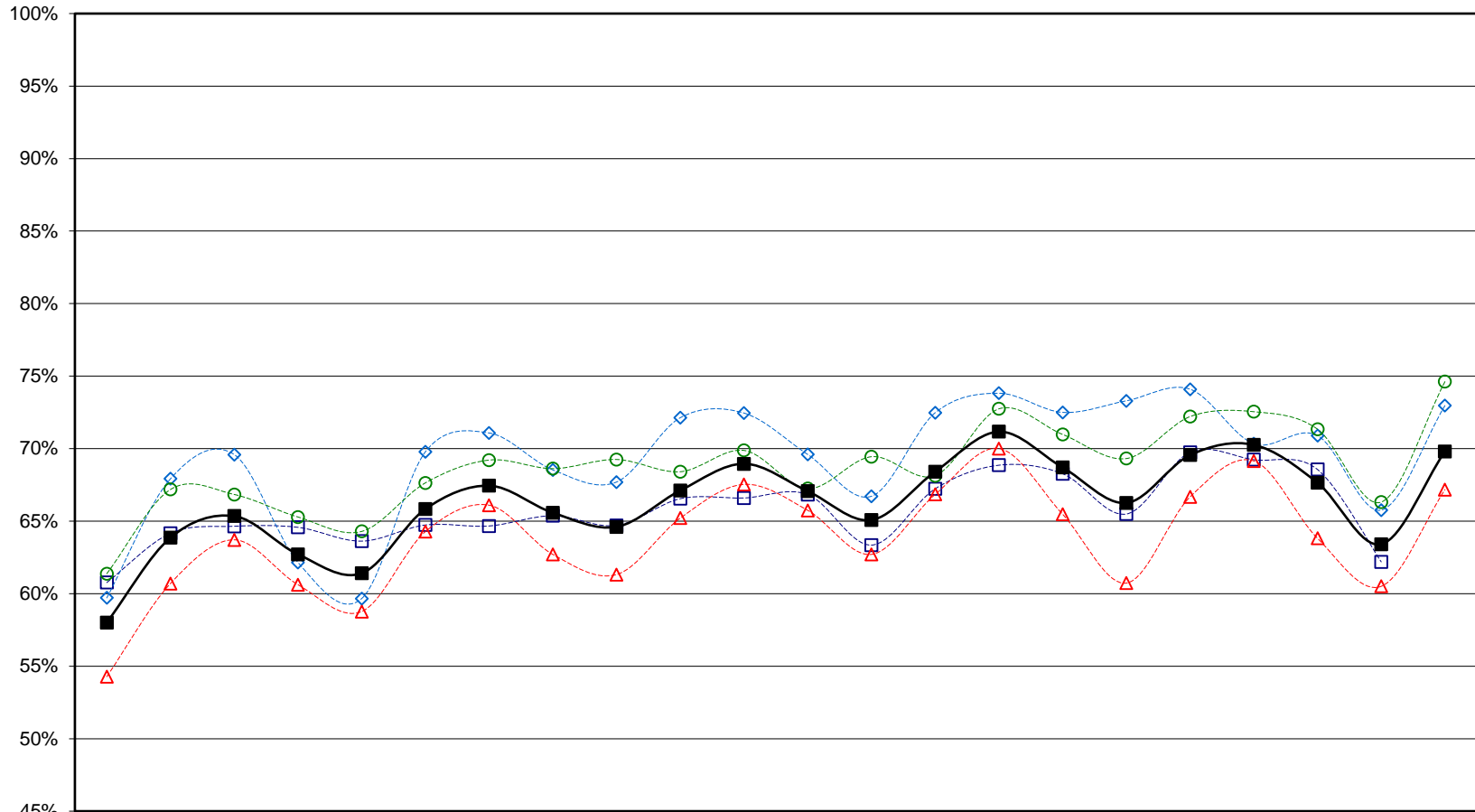


**Percent of Traffic Driving over the Posted Speed by Quarter on Iowa Rural Interstates**



	Jan-Mar 2014	Apr-Jun 2014	Jul-Sep 2014	Oct-Dec 2014	Jan-Mar 2015	Apr-Jun 2015	Jul-Sep 2015	Oct-Dec 2015	Jan-Mar 2016	Apr-Jun 2016	Jul-Sep 2016	Oct-Dec 2016	Jan-Mar 2017	Apr-Jun 2017	Jul-Sep 2017	Oct-Dec 2017	Jan-Mar 2018	Apr-Jun 2018	Jul-Sep 2018	Oct-Dec 2018	Jan-Mar 2019	Apr-Jun 2019
---□--- I 29	61%	64%	65%	65%	64%	65%	65%	65%	65%	67%	67%	67%	63%	67%	69%	68%	65%	70%	69%	69%	62%	N.A.
---◇--- I 35	60%	68%	70%	62%	60%	70%	71%	69%	68%	72%	72%	70%	67%	72%	74%	72%	73%	74%	70%	71%	66%	73%
---△--- I 80	54%	61%	64%	61%	59%	64%	66%	63%	61%	65%	68%	66%	63%	67%	70%	65%	61%	67%	69%	64%	61%	67%
---○--- I 380	61%	67%	67%	65%	64%	68%	69%	69%	69%	68%	70%	67%	69%	68%	73%	71%	69%	72%	73%	71%	66%	75%
—■— ALL	58%	64%	65%	63%	61%	66%	67%	66%	65%	67%	69%	67%	65%	68%	71%	69%	66%	70%	70%	68%	63%	70%