



**AUTOMATIC TRAFFIC RECORDER  
MONTHLY REPORT  
NOVEMBER 2017**

PREPARED BY

**OFFICE OF SYSTEMS PLANNING**

IN COOPERATION WITH

**UNITED STATES DEPARTMENT OF TRANSPORTATION**

FEDERAL HIGHWAY ADMINISTRATION

TELEPHONE

515/239-1526

## TABLE OF CONTENTS

<b>Summary</b> .....	<b>3</b>
<b>Automatic Traffic Location Map</b> .....	<b>4</b>
<b>Monthly Traffic Variations</b> <b>2017 vs 2016</b> .....	<b>5</b>
<b>Comparison of Estimated Vehicle</b> <b>Miles by System</b> .....	<b>6</b>
<b>Vehicle Miles of Travel</b> .....	<b>7</b>
<b>Individual Recorder Data</b> .....	<b>8 - 27</b>
<b>Monthly Interstate &amp; Primary VMT</b> .....	<b>28</b>
<b>Monthly Interstate VMT</b> .....	<b>29</b>
<b>Monthly US &amp; IA Route VMT</b> .....	<b>30</b>
<b>Monthly Total State VMT</b> .....	<b>31</b>

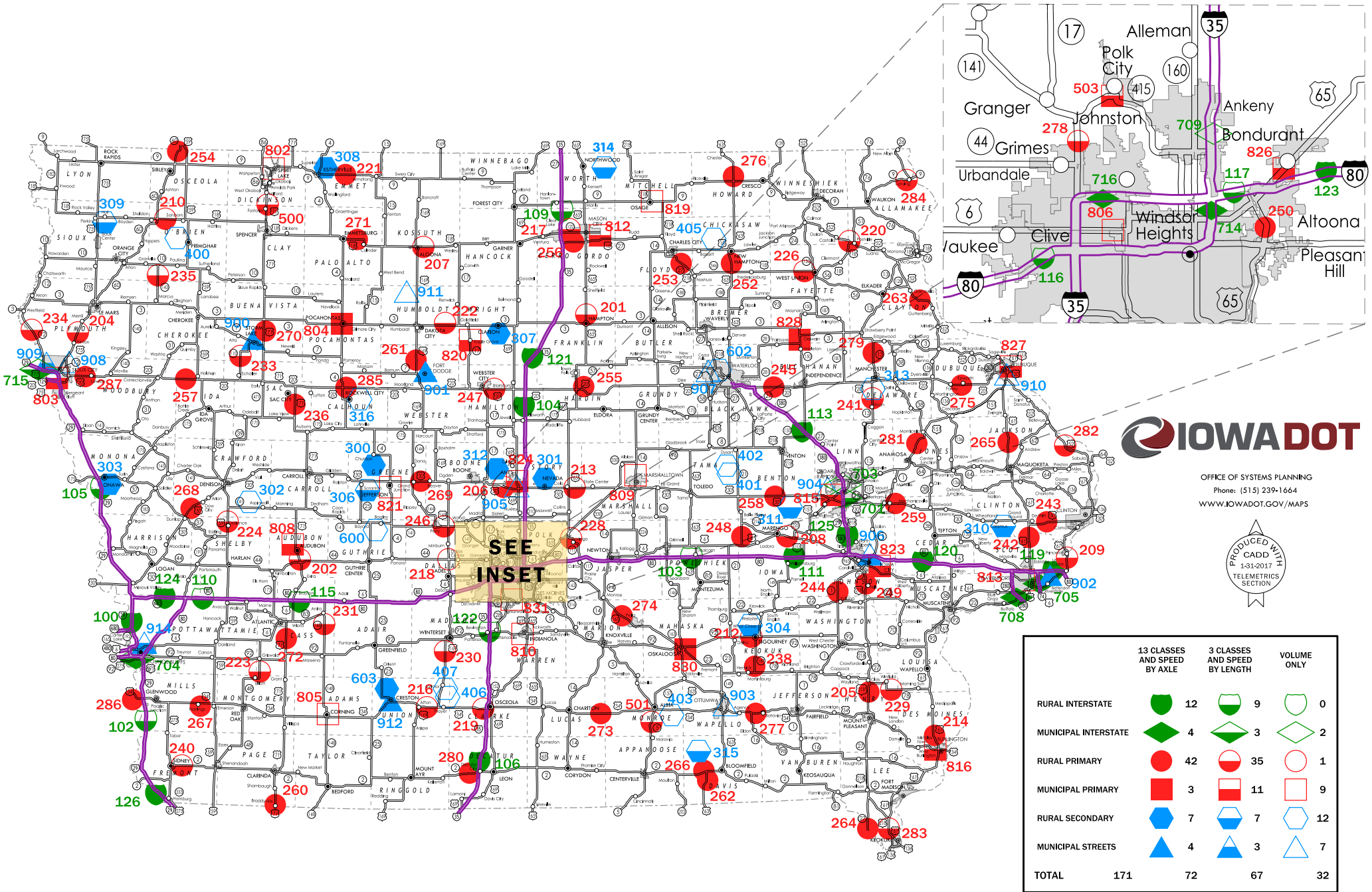
# TRAFFIC VOLUME VARIATIONS ON THE IOWA ROAD SYSTEM

	<u>NOVEMBER</u> 2017	COMPARED TO	<u>NOVEMBER</u> 2016	YEAR <u>TO DATE</u> 2017 / 2016
<b><u>RURAL</u></b>				
INTERSTATE			2.0%	2.0%
PRIMARY			0.8%	0.9%
SECONDARY			3.3%	1.3%
<b>SUBTOTAL</b>			<b>1.8%</b>	<b>1.3%</b>
<b><u>MUNICIPAL</u></b>				
INTERSTATE			2.8%	2.7%
PRIMARY			1.3%	1.3%
STREETS			1.5%	0.9%
<b>SUBTOTAL</b>			<b>1.7%</b>	<b>1.3%</b>
<b>STATE TOTAL</b>			<b>1.8%</b>	<b>1.3%</b>

Data collected at the 171 continuous automatic traffic recorder locations shown on the following pages were utilized to compute the above percentages. The rural, municipal and state totals were weighted based on estimated vehicle miles of travel.

# AUTOMATIC TRAFFIC RECORDER LOCATIONS

JANUARY 1, 2017

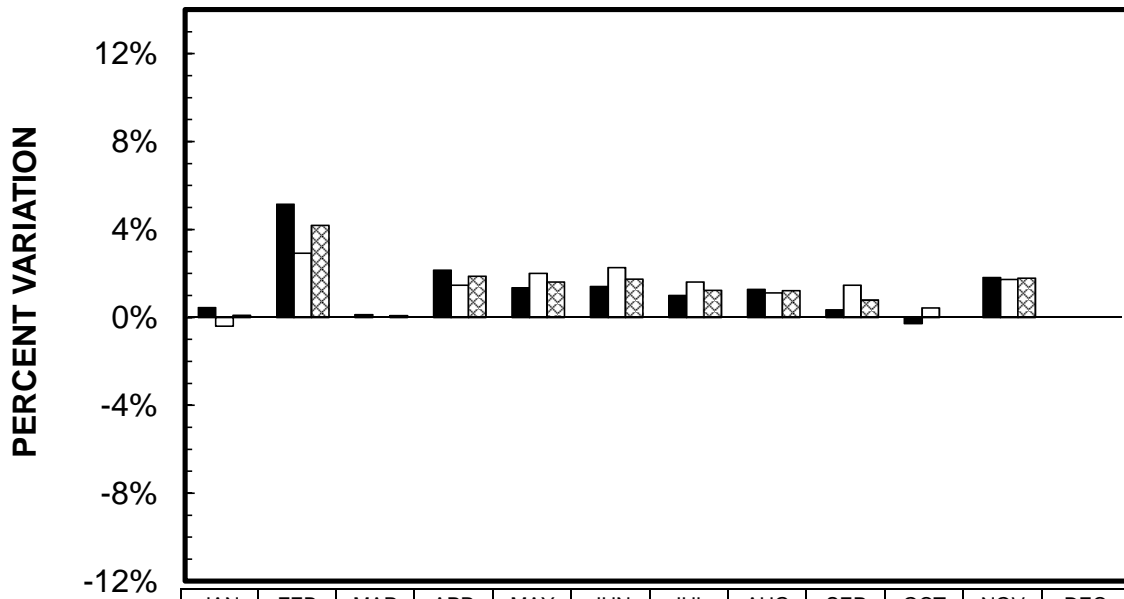


OFFICE OF SYSTEMS PLANNING  
Phone: (515) 239-1664  
WWW.IOWADOT.GOV/MAPS



### MONTHLY TRAFFIC VARIATIONS

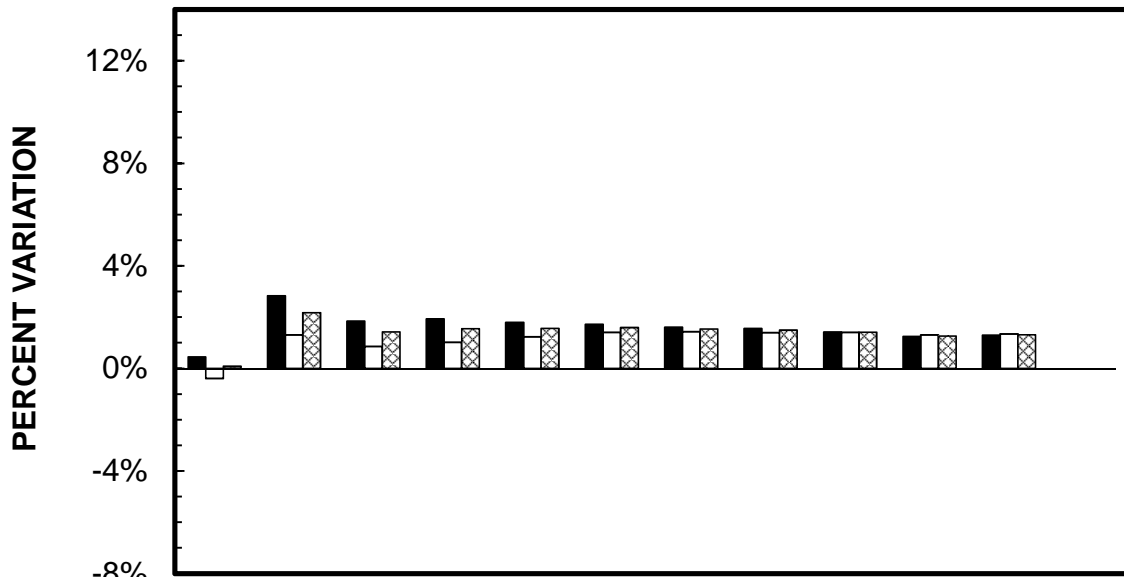
2017 vs 2016



	JAN	FEB	MAR	APR	MAY	JUN	JUL	AUG	SEP	OCT	NOV	DEC
■ RURAL	0.44%	5.14%	0.13%	2.15%	1.35%	1.41%	1.00%	1.27%	0.34%	-0.29%	1.82%	
□ MUNICIPAL	-0.40%	2.92%	0.00%	1.47%	2.00%	2.26%	1.61%	1.12%	1.47%	0.43%	1.73%	
▨ STATE TOTAL	0.08%	4.19%	0.07%	1.87%	1.60%	1.74%	1.23%	1.21%	0.79%	0.00%	1.78%	

### CUMULATIVE MONTHLY TRAFFIC VARIATIONS

2017 vs 2016



	JAN	FEB	MAR	APR	MAY	JUN	JUL	AUG	SEP	OCT	NOV	DEC
■ RURAL	0.44%	2.83%	1.84%	1.92%	1.79%	1.72%	1.61%	1.56%	1.42%	1.24%	1.29%	
□ MUNICIPAL	-0.40%	1.30%	0.85%	1.02%	1.22%	1.40%	1.43%	1.39%	1.40%	1.30%	1.34%	
▨ STATE TOTAL	0.08%	2.17%	1.42%	1.55%	1.56%	1.59%	1.54%	1.49%	1.41%	1.26%	1.31%	

**COMPARISON OF ESTIMATED VMT BY SYSTEM** (IN 1,000,000's)

	JAN %dif	FEB %dif	MAR %dif	APR %dif	MAY %dif	JUN %dif	JUL %dif	AUG %dif	SEP %dif	OCT %dif	NOV %dif	DEC %dif	CUMULATIVE	%dif
<b>RURAL INTERSTATE</b>														
2017	371	400	450	466	504	538	537	539	491	471	462		5229	
2016	368 0.8%	380 5.3%	448 0.4%	449 3.8%	494 2.0%	526 2.3%	533 0.8%	527 2.3%	485 1.2%	465 1.3%	453 2.0%		5128	2.0%
<b>RURAL PRIMARY</b>														
2017	624	680	712	757	785	807	791	802	786	771	744		8259	
2016	624 0.0%	648 4.9%	714 -0.3%	741 2.2%	781 0.5%	805 0.2%	787 0.5%	796 0.8%	780 0.8%	774 -0.4%	738 0.8%		8188	0.9%
<b>RURAL SECONDARY</b>														
2017	369	392	437	487	516	525	496	493	494	503	473		5185	
2016	366 0.8%	372 5.4%	435 0.5%	484 0.6%	506 2.0%	513 2.3%	486 2.1%	488 1.0%	500 -1.2%	511 -1.6%	458 3.3%		5119	1.3%
<b>RURAL SUBTOTAL</b>														
2017	1364	1472	1599	1710	1805	1870	1824	1834	1771	1745	1679		18673	
2016	1358 0.4%	1400 5.1%	1597 0.1%	1674 2.2%	1781 1.3%	1844 1.4%	1806 1.0%	1811 1.3%	1765 0.3%	1750 -0.3%	1649 1.8%		18435	1.3%
<b>MUNICIPAL INTERSTATE</b>														
2017	196	209	217	223	227	236	227	236	232	229	222		2454	
2016	192 2.1%	200 4.5%	213 1.9%	220 1.4%	223 1.8%	229 3.1%	221 2.7%	229 3.1%	222 4.5%	224 2.2%	216 2.8%		2389	2.7%
<b>MUNICIPAL PRIMARY</b>														
2017	268	290	295	314	331	336	328	328	318	316	305		3429	
2016	270 -0.7%	282 2.8%	295 0.0%	313 0.3%	326 1.5%	329 2.1%	319 2.8%	320 2.5%	315 1.0%	316 0.0%	301 1.3%		3386	1.3%
<b>MUNICIPAL STREETS</b>														
2017	542	592	586	636	615	605	578	610	624	623	592		6603	
2016	548 -1.1%	578 2.4%	590 -0.7%	623 2.1%	601 2.3%	593 2.0%	575 0.5%	612 -0.3%	620 0.6%	623 0.0%	583 1.5%		6546	0.9%
<b>MUNICIPAL SUBTOTAL</b>														
2017	1006	1091	1098	1173	1173	1177	1133	1174	1174	1168	1119		12486	
2016	1010 -0.4%	1060 2.9%	1098 0.0%	1156 1.5%	1150 2.0%	1151 2.3%	1115 1.6%	1161 1.1%	1157 1.5%	1163 0.4%	1100 1.7%		12321	1.3%
<b>STATE TOTAL</b>														
2017	2370	2563	2697	2883	2978	3047	2957	3008	2945	2913	2798		31159	
2016	2368 0.1%	2460 4.2%	2695 0.1%	2830 1.9%	2931 1.6%	2995 1.7%	2921 1.2%	2972 1.2%	2922 0.8%	2913 0.0%	2749 1.8%		30756	1.3%

**COMPARISON OF ESTIMATED VMT BY SYSTEM** (IN 1,000,000's)

	JAN %dif	FEB %dif	MAR %dif	APR %dif	MAY %dif	JUN %dif	JUL %dif	AUG %dif	SEP %dif	OCT %dif	NOV %dif	DEC %dif	CUMULATIVE	%dif
<b>RURAL INTERSTATE</b>														
2017	371	400	450	466	504	538	537	539	491	471	462		5229	
2016	368 0.8%	380 5.3%	448 0.4%	449 3.8%	494 2.0%	526 2.3%	533 0.8%	527 2.3%	485 1.2%	465 1.3%	453 2.0%		5128	2.0%
<b>RURAL PRIMARY</b>														
2017	624	680	712	757	785	807	791	802	786	771	744		8259	
2016	624 0.0%	648 4.9%	714 -0.3%	741 2.2%	781 0.5%	805 0.2%	787 0.5%	796 0.8%	780 0.8%	774 -0.4%	738 0.8%		8188	0.9%
<b>RURAL SECONDARY</b>														
2017	369	392	437	487	516	525	496	493	494	503	473		5185	
2016	366 0.8%	372 5.4%	435 0.5%	484 0.6%	506 2.0%	513 2.3%	486 2.1%	488 1.0%	500 -1.2%	511 -1.6%	458 3.3%		5119	1.3%
<b>RURAL SUBTOTAL</b>														
2017	1364	1472	1599	1710	1805	1870	1824	1834	1771	1745	1679		18673	
2016	1358 0.4%	1400 5.1%	1597 0.1%	1674 2.2%	1781 1.3%	1844 1.4%	1806 1.0%	1811 1.3%	1765 0.3%	1750 -0.3%	1649 1.8%		18435	1.3%
<b>MUNICIPAL INTERSTATE</b>														
2017	196	209	217	223	227	236	227	236	232	229	222		2454	
2016	192 2.1%	200 4.5%	213 1.9%	220 1.4%	223 1.8%	229 3.1%	221 2.7%	229 3.1%	222 4.5%	224 2.2%	216 2.8%		2389	2.7%
<b>MUNICIPAL PRIMARY</b>														
2017	268	290	295	314	331	336	328	328	318	316	305		3429	
2016	270 -0.7%	282 2.8%	295 0.0%	313 0.3%	326 1.5%	329 2.1%	319 2.8%	320 2.5%	315 1.0%	316 0.0%	301 1.3%		3386	1.3%
<b>MUNICIPAL STREETS</b>														
2017	542	592	586	636	615	605	578	610	624	623	592		6603	
2016	548 -1.1%	578 2.4%	590 -0.7%	623 2.1%	601 2.3%	593 2.0%	575 0.5%	612 -0.3%	620 0.6%	623 0.0%	583 1.5%		6546	0.9%
<b>MUNICIPAL SUBTOTAL</b>														
2017	1006	1091	1098	1173	1173	1177	1133	1174	1174	1168	1119		12486	
2016	1010 -0.4%	1060 2.9%	1098 0.0%	1156 1.5%	1150 2.0%	1151 2.3%	1115 1.6%	1161 1.1%	1157 1.5%	1163 0.4%	1100 1.7%		12321	1.3%
<b>STATE TOTAL</b>														
2017	2370	2563	2697	2883	2978	3047	2957	3008	2945	2913	2798		31159	
2016	2368 0.1%	2460 4.2%	2695 0.1%	2830 1.9%	2931 1.6%	2995 1.7%	2921 1.2%	2972 1.2%	2922 0.8%	2913 0.0%	2749 1.8%		30756	1.3%

**COMPARISON OF THE MONTHLY AVERAGE DAILY TRAFFIC (MADT) FOR 2017 AND 2016  
AND ANNUAL AVERAGE DAILY TRAFFIC (AADT)**

**RURAL INTERSTATE**

<b>LOCATION AND STATION NUMBER</b>		<b>JAN. MADT</b>	<b>FEB. MADT</b>	<b>MARCH MADT</b>	<b>APRIL MADT</b>	<b>MAY MADT</b>	<b>JUNE MADT</b>	<b>JULY MADT</b>	<b>AUG. MADT</b>	<b>SEPT. MADT</b>	<b>OCT. MADT</b>	<b>NOV. MADT</b>	<b>DEC. MADT</b>	<b>ANNUAL AADT</b>
I 29 2.0 MI NORTH OF SOUTH JCT. I 680 HONEY CREEK 100-78	2017	17458	18950	21299	22146	NO DATA	NO DATA	NO DATA	NO DATA	23498	22950	22523		
	2016	17965	18484	21631	21663	24032	25397	25738	24535	23187	22981	21682	19816	<b>22259</b>
	%	-2.82%	2.52%	-1.53%	2.23%					1.34%	-0.13%	3.88%		
I 29 7.0 MI SOUTH OF US 34 PACIFIC JUNCTION 102-65	2017	10414	11690	13449	13820	15566	16613	16686	16028	14929	14569	14155		
	2016	10511	11180	13429	13175	15078	15911	16517	15162	14240	14251	13677	12224	<b>13780</b>
	%	-0.92%	4.56%	0.15%	4.90%	3.24%	4.41%	1.02%	5.71%	4.84%	2.23%	3.49%		
I 80 1.0 MI WEST OF US 63 GRINNELL 103-79	2017	21513	22980	26480	27386	30635	33197	33512	33811	30641	29312	28745		
	2016	21310	21914	26607	26395	29811	32247	33333	33456	30570	28953	28740	24095	<b>28119</b>
	%	0.95%	4.86%	-0.48%	3.75%	2.76%	2.95%	0.54%	1.06%	0.23%	1.24%	0.02%		
I 35 3.0 MI NORTH OF IA 175 JEWELL 104-40	2017	18727	20510	23345	24040	25949	27053	27787	27530	25339	24840	24787		
	2016	18511	19297	23636	23078	25477	26602	26634	26838	25231	24700	24334	21064	<b>23783</b>
	%	1.17%	6.29%	-1.23%	4.17%	1.85%	1.70%	4.33%	2.58%	0.43%	0.57%	1.86%		
I 29 3.8 MI SOUTH OF IA 175 ONAWA 105-67	2017	10278	11757	13450	14009	16075	17387	17862	17424	15614	15057	14567		
	2016	11028	11288	13585	13512	15707	16840	17786	16726	15320	14962	13861	11589	<b>14350</b>
	%	-6.80%	4.15%	-0.99%	3.68%	2.34%	3.25%	0.43%	4.17%	1.92%	0.63%	5.09%		
I 35 0.6 MI NORTH OF IA 2 LEON 106-27	2017	11002	11708	14190	14072	15278	15921	16216	15384	14295	14551	14963		
	2016	11371	11289	14395	13815	14954	15616	16387	15178	14350	14215	14734	13069	<b>14115</b>
	%	-3.25%	3.71%	-1.42%	1.86%	2.17%	1.95%	-1.04%	1.36%	-0.38%	2.36%	1.55%		
I 35 3.0 MI NORTH OF CO RD B20 HANLONTOWN 109-17	2017	15885	17080	20163	20878	22637	24670	25396	24739	22614	21776	21169		
	2016	15980	16362	20310	19864	22151	23987	24975	24370	22230	21487	20859	18498	<b>20923</b>
	%	-0.59%	4.39%	-0.72%	5.10%	2.19%	2.85%	1.69%	1.51%	1.73%	1.34%	1.49%		
I 80 1.5 MI WEST OF CO RD M16 SHELBY 110-78	2017	19091	20448	23895	24812	27861	30826	31134	30953	27830	26262	25205		
	2016	19343	19604	24078	24048	27311	30336	31009	30160	27615	25972	25048	21708	<b>25519</b>
	%	-1.30%	4.31%	-0.76%	3.18%	2.01%	1.62%	0.40%	2.63%	0.78%	1.12%	0.63%		
I 80 2.0 MI EAST OF IA 149 WILLIAMSBURG 111-48	2017	25955	27626	31413	32550	36094	38750	38872	39681	35935	34753	34559		
	2016	25820	26614	31742	31581	35244	37785	38627	39004	35874	34262	33980	29038	<b>33298</b>
	%	0.52%	3.80%	-1.04%	3.07%	2.41%	2.55%	0.63%	1.74%	0.17%	1.43%	1.70%		
I 380 3.8 MI NORTH OF IA 150 BRANDON 113-06	2017	14265	15501	16783	17489	18362	19160	19445	19402	18688	18450	18218		
	2016	14081	15695	17168	16950	18290	19207	19139	19102	18613	18608	18053	15330	<b>17520</b>
	%	1.31%	-1.24%	-2.24%	3.18%	0.39%	-0.24%	1.60%	1.57%	0.40%	-0.85%	0.91%		
I 80 2.0 MI EAST OF US 71 ATLANTIC 115-15	2017	16129	17154	20596	21453	24492	27281	27630	27498	24289	22835	21892		
	2016	16203	16508	20735	20587	23842	26923	27701	26970	24120	22450	21697	18375	<b>22176</b>
	%	-0.46%	3.91%	-0.67%	4.21%	2.73%	1.33%	-0.26%	1.96%	0.70%	1.71%	0.90%		



**COMPARISON OF THE MONTHLY AVERAGE DAILY TRAFFIC (MADT) FOR 2017 AND 2016  
AND ANNUAL AVERAGE DAILY TRAFFIC (AADT)**

**RURAL INTERSTATE**

LOCATION AND STATION NUMBER		JAN. MADT	FEB. MADT	MARCH MADT	APRIL MADT	MAY MADT	JUNE MADT	JULY MADT	AUG. MADT	SEPT. MADT	OCT. MADT	NOV. MADT	DEC. MADT	ANNUAL AADT
I 80 0.8 MI WEST OF JORDAN CREEK PARKWAY WAUKEE 116-25	2017	39502	42050	45800	48573	TRAFFIC VARIATIONS FOR SITE MOVED TO MUNICIPAL INTERSTATE GROUP AS OF MAY 1ST								
	2016	36811	37518	43004	44594	48670	51105	51481	52446	48933	48293	46016	42811	45973
	%	7.31%	12.08%	6.50%	8.92%									
I 80 1.8 MI EAST OF EAST JCT. I 35/80/235 ALTOONA 117-77	2017	NO DATA	75123	79657	83778	TRAFFIC VARIATIONS FOR SITE MOVED TO MUNICIPAL INTERSTATE GROUP AS OF MAY 1ST								
	2016	67731	70409	77904	80628	85168	89346	87963	87898	78454	71876	69722	60948	77337
	%		6.70%	2.25%	3.91%									
I 80 1.5 MI EAST OF MIDDLE ROAD LECLAIRE 119-82	2017	NO DATA	NO DATA	NO DATA	NO DATA	NO DATA	NO DATA	NO DATA	NO DATA	NO DATA	NO DATA	NO DATA	NO DATA	NO AADT
	2016	26595	27184	32118	33504	35125	NO DATA	NO DATA	NO DATA	NO DATA	NO DATA	NO DATA	NO DATA	NO AADT
	%													
I 80 2.5 MI EAST OF CO RD X40 TIPTON 120-16	2017	28388	30110	33726	35014	38324	40894	41188	41481	38138	37493	36237		
	2016	28445	29382	34325	34424	38305	NO DATA	41514	NO DATA	37320	36718	35902	30952	NO AADT
	%	-0.20%	2.48%	-1.75%	1.71%	0.05%		-0.79%		2.19%	2.11%	0.93%		
I 35 2.0 MI NORTH OF CO RD R75 DOWS 121-99	2017	11965	12688	15079	15667	17261	18429	19114	18374	17006	16286	15914		
	2016	11877	12139	15365	14961	16792	17985	18756	18580	16756	16011	15675	13868	15730
	%	0.74%	4.52%	-1.86%	4.72%	2.79%	2.47%	1.91%	-1.11%	1.49%	1.72%	1.52%		
I 35 1.0 MI NORTH OF IA 92 CUMMING 122-92	2017	18807	19504	21926	22260	23578	24276	24502	24622	22628	23278	23493		
	2016	18603	18797	22366	21983	23099	23689	24108	23378	22052	22364	22270	20981	21974
	%	1.10%	3.76%	-1.97%	1.26%	2.07%	2.48%	1.63%	5.32%	2.61%	4.09%	5.49%		
I 80 4.8 MI EAST OF EAST JCT. US 65 MITCHELLVILLE 123-77	2017	NO DATA	NO DATA	NO DATA	NO DATA	NO DATA	NO DATA	NO DATA	NO DATA	NO DATA	NO DATA	NO DATA	NO DATA	NO AADT
	2016	NO DATA	NO DATA	NO DATA	NO DATA	NO DATA	NO DATA	NO DATA	NO DATA	NO DATA	NO DATA	NO DATA	NO DATA	NO AADT
	%													
I 680 6.4 MI WEST OF I 80 BEEBETOWN 124-78	2017	NO DATA	NO DATA	NO DATA	NO DATA	NO DATA	NO DATA	NO DATA	NO DATA	NO DATA	NO DATA	NO DATA	NO DATA	NO AADT
	2016	4805	4948	6092	6009	6771	7324	7133	7270	NO DATA	NO DATA	NO DATA	NO DATA	NO AADT
	%													
I 380 6.0 MI NORTH OF I 80 NORTH LIBERTY 125-52	2017	48767	52830	54726	56547	TRAFFIC VARIATIONS FOR SITE MOVED TO MUNICIPAL INTERSTATE GROUP AS OF MAY 1ST								
	2016	47639	49824	53839	55207	56105	58066	57265	58891	NO DATA	NO DATA	55524	49866	NO AADT
	%	2.37%	6.03%	1.65%	2.43%									
I 29 9.0 MI SOUTH OF IA 2 HAMBURG 126-36	2017	10298	11561	13611	14084	16288	17699	17018	16544	15015	14493	14518		
	2016	NO DATA	NO DATA	NO DATA	NO DATA	NO DATA	NO DATA	NO DATA	NO DATA	NO DATA	14522	14145	12310	NO AADT
	%										-0.20%	2.64%		
<b>TOTAL RURAL INTERSTATE</b>	<b>2017</b>	<b>328146</b>	<b>427709</b>	<b>475977</b>	<b>494494</b>	<b>312112</b>	<b>293563</b>	<b>339344</b>	<b>295446</b>	<b>331444</b>	<b>336905</b>	<b>330945</b>		
	<b>2016</b>	<b>325498</b>	<b>406304</b>	<b>474119</b>	<b>476465</b>	<b>306061</b>	<b>287128</b>	<b>336486</b>	<b>288924</b>	<b>327478</b>	<b>332456</b>	<b>324657</b>		
	<b>%</b>	<b>0.81%</b>	<b>5.27%</b>	<b>0.39%</b>	<b>3.78%</b>	<b>1.98%</b>	<b>2.24%</b>	<b>0.85%</b>	<b>2.26%</b>	<b>1.21%</b>	<b>1.34%</b>	<b>1.94%</b>		

NOTE: Numbers in red denote estimated traffic due to road construction, inaccurate, or insufficient data. Monthly data for sites without comparable data are not include in TOTAL.

**COMPARISON OF THE MONTHLY AVERAGE DAILY TRAFFIC (MADT) FOR 2017 AND 2016  
AND ANNUAL AVERAGE DAILY TRAFFIC (AADT)**

**RURAL PRIMARY**

LOCATION AND STATION NUMBER		JAN. MADT	FEB. MADT	MARCH MADT	APRIL MADT	MAY MADT	JUNE MADT	JULY MADT	AUG. MADT	SEPT. MADT	OCT. MADT	NOV. MADT	DEC. MADT	ANNUAL AADT
US 65 2.7 MI NORTH OF IA 3 HAMPTON 201-35	2017	2453	2690	2850	3094	3294	3357	3235	3197	3175	3056	2966		
	2016	2589	2616	2852	2998	3099	3129	3011	3087	3066	3108	3003	2691	<b>2937</b>
	%	-5.25%	2.83%	-0.07%	3.20%	6.29%	7.29%	7.44%	3.56%	3.56%	-1.67%	-1.23%		
US 71 2.0 MI NORTH OF IA 44 HAMLIN 202-05	2017	2688	2971	3171	3440	3602	3792	3686	3599	3471	3430	3354		
	2016	NO DATA	NO DATA	NO DATA	NO DATA	NO DATA	NO DATA	NO DATA	NO DATA	NO DATA	3442	3329	2997	<b>NO AADT</b>
	%										-0.35%	0.75%		
US 75 3.1 MI NORTH OF CO RD C60 HINTON 204-75	2017	12112	13349	14349	14894	15196	15490	15458	15192	14495	14265	14149		
	2016	12338	12595	13782	14486	15081	15517	15863	15362	14882	14666	14238	13422	<b>14353</b>
	%	-1.83%	5.99%	4.11%	2.82%	0.76%	-0.17%	-2.55%	-1.11%	-2.60%	-2.73%	-0.63%		
US 218 1.7 MI SOUTH OF IA 78 SWEDESBURG 205-44	2017	11031	12016	13243	13475	14042	14566	14212	14263	14301	13932	13550		
	2016	10848	11538	13163	13109	13771	14395	14208	14148	14065	13620	13468	12159	<b>13208</b>
	%	1.69%	4.14%	0.61%	2.79%	1.97%	1.19%	0.03%	0.81%	1.68%	2.29%	0.61%		
US 30 AT BOONE/STORY CO LINE NAPIER 206-85	2017	12886	14666	14694	NO DATA	NO DATA	15527	15183	15763	16743	15670	14874		
	2016	13482	13983	14974	15936	15961	16468	15863	16604	17396	16845	15653	13294	<b>15538</b>
	%	-4.42%	4.88%	-1.87%			-5.71%	-4.29%	-5.07%	-3.75%	-6.98%	-4.98%		
US 18 2.2 MI EAST OF US 169 ALGONA 207-55	2017	2873	2880	3023	3331	3586	3853	3622	3510	3663	3379	3324		
	2016	2927	2882	3111	3375	3602	3777	3750	3673	3659	3387	3302	3019	<b>3372</b>
	%	-1.84%	-0.07%	-2.83%	-1.30%	-0.44%	2.01%	-3.41%	-4.44%	0.11%	-0.24%	0.67%		
US 6 3.0 MI EAST OF CO V66 MARENGO 208-48	2017	2940	3154	3340	3508	3657	3742	3801	3683	3590	3583	3360		
	2016	2930	3074	3377	3521	3692	3744	3757	3649	3513	3568	3380	3083	<b>3441</b>
	%	0.34%	2.60%	-1.10%	-0.37%	-0.95%	-0.05%	1.17%	0.93%	2.19%	0.42%	-0.59%		
US 67 1.5 MI SOUTH OF CO RD F45 PRINCETON 209-82	2017	3439	3764	3854	4141	4377	4550	4497	4432	4389	4261	3824		
	2016	3429	3724	3883	4311	4490	4697	4552	4592	4503	4428	3957	3508	<b>4173</b>
	%	0.29%	1.07%	-0.75%	-3.94%	-2.52%	-3.13%	-1.21%	-3.48%	-2.53%	-3.77%	-3.36%		
US 18 2.4 MI EAST OF IA 60 SHELDON 210-71	2017	3677	3946	4080	4322	4349	4743	4425	NO DATA	NO DATA	NO DATA	NO DATA		
	2016	3755	3706	3941	4322	4549	5001	4683	4862	5059	4510	4110	3877	<b>4365</b>
	%	-2.08%	6.48%	3.53%	0.00%	-4.40%	-5.16%	-5.51%						

**COMPARISON OF THE MONTHLY AVERAGE DAILY TRAFFIC (MADT) FOR 2017 AND 2016  
AND ANNUAL AVERAGE DAILY TRAFFIC (AADT)**

**RURAL PRIMARY**

<b>LOCATION AND STATION NUMBER</b>		<b>JAN. MADT</b>	<b>FEB. MADT</b>	<b>MARCH MADT</b>	<b>APRIL MADT</b>	<b>MAY MADT</b>	<b>JUNE MADT</b>	<b>JULY MADT</b>	<b>AUG. MADT</b>	<b>SEPT. MADT</b>	<b>OCT. MADT</b>	<b>NOV. MADT</b>	<b>DEC. MADT</b>	<b>ANNUAL AADT</b>
IA 92 0.6 MI WEST OF CO RD V45 SIGOURNEY 212-54	2017	2164	2340	2535	2654	2858	2756	2678	2761	2638	NO DATA	2481		
	2016	2209	2334	2509	2635	2841	2832	NO DATA	2741	2677	2763	2551	2288	NO AADT
	%	-2.04%	0.26%	1.04%	0.72%	0.60%	-2.68%		0.73%	-1.46%		-2.74%		
US 30 1.8 MI EAST OF US 65 COLO 213-85	2017	5943	6421	6628	7150	7402	7529	7227	7408	7737	7318	6948		
	2016	5737	5970	6627	6961	7219	7432	7045	7540	7618	7397	7070	6079	6891
	%	3.59%	7.55%	0.02%	2.72%	2.53%	1.31%	2.58%	-1.75%	1.56%	-1.07%	-1.73%		
US 61 3.8 MI NORTH OF US 34 BURLINGTON 214-29	2017	5960	6415	6622	6932	7138	7417	7129	6978	6931	6984	6689		
	2016	6132	6500	6790	7138	7497	7583	7527	7408	7134	7034	6733	6245	6977
	%	-2.80%	-1.31%	-2.47%	-2.89%	-4.79%	-2.19%	-5.29%	-5.80%	-2.85%	-0.71%	-0.65%		
US 34/169 2.5 MI EAST OF WEST JCT US 169 AFTON 216-88	2017	3189	3466	3510	3758	3943	3969	3721	3777	3777	3764	3613		
	2016	3250	3389	3587	3808	3934	4013	3737	3786	3846	3887	3640	3374	3688
	%	-1.88%	2.27%	-2.15%	-1.31%	0.23%	-1.10%	-0.43%	-0.24%	-1.79%	-3.16%	-0.74%		
IA 122 2.5 MI EAST OF I 35 CLEAR LAKE 217-17	2017	12645	13289	13602	14542	14956	15538	15499	14740	14106	13987	13798		
	2016	12655	12944	13431	14253	14942	15306	NO DATA	NO DATA	NO DATA	NO DATA	13582	13721	NO AADT
	%	-0.08%	2.67%	1.27%	2.03%	0.09%	1.52%					1.59%		
IA 44 0.2 MI WEST OF US 169 ADEL 218-25	2017	3019	3259	3439	3831	4267	4472	4572	4389	4195	4037	3765		
	2016	3033	3068	3482	3749	4099	4452	4432	4244	4003	3903	3634	3271	3781
	%	-0.46%	6.23%	-1.23%	2.19%	4.10%	0.45%	3.16%	3.42%	4.80%	3.43%	3.60%		
US 34 1.0 MI WEST OF I 35 OSCEOLA 219-20	2017	4142	4449	4516	4765	4983	5011	4858	4902	4872	4802	4669		
	2016	4094	4307	4546	4757	4988	5089	4865	4813	4903	4810	4657	4355	4682
	%	1.17%	3.30%	-0.66%	0.17%	-0.10%	-1.53%	-0.14%	1.85%	-0.63%	-0.17%	0.26%		
US 52 1.0 MI NORTH OF US 18 POSTVILLE 220-03	2017	1233	1372	1441	1616	1749	1750	1665	1695	1679	1629	1550		
	2016	NO DATA	NO DATA	NO DATA	NO DATA	NO DATA	NO DATA	1712	1755	1662	1721	1582	1277	NO AADT
	%							-2.75%	-3.42%	1.02%	-5.35%	-2.02%		
IA 9 2.5 MI WEST OF CO RD N52 ARMSTRONG 221-32	2017	1300	1395	1486	1703	1782	1815	1863	1837	1818	1701	1639		
	2016	1376	1307	1516	1664	1791	1845	1892	1739	1734	1666	1493	1344	1614
	%	-5.52%	6.73%	-1.98%	2.34%	-0.50%	-1.63%	-1.53%	5.64%	4.84%	2.10%	9.78%		
IA 3 0.3 MI WEST OF CO RD P66 HUMBOLDT 222-46	2017	1671	1769	1863	2021	2163	2282	2178	2143	2057	2050	2045		
	2016	NO DATA	NO DATA	NO DATA	NO DATA	NO DATA	NO DATA	2090	2100	2130	2179	2049	1799	NO AADT
	%							4.21%	2.05%	-3.43%	-5.92%	-0.20%		

**COMPARISON OF THE MONTHLY AVERAGE DAILY TRAFFIC (MADT) FOR 2017 AND 2016  
AND ANNUAL AVERAGE DAILY TRAFFIC (AADT)**

**RURAL PRIMARY**

<b>LOCATION AND STATION NUMBER</b>		<b>JAN. MADT</b>	<b>FEB. MADT</b>	<b>MARCH MADT</b>	<b>APRIL MADT</b>	<b>MAY MADT</b>	<b>JUNE MADT</b>	<b>JULY MADT</b>	<b>AUG. MADT</b>	<b>SEPT. MADT</b>	<b>OCT. MADT</b>	<b>NOV. MADT</b>	<b>DEC. MADT</b>	<b>ANNUAL AADT</b>
IA 48 4.0 MI SOUTH OF IA 92	2017	1061	1114	1248	1301	1376	1339	1195	1239	1268	1288	1271		
GRISWOLD	2016	1053	1075	1233	1248	1325	1308	1168	1189	1228	1344	1244	1167	<b>1215</b>
223-15	%	0.76%	3.63%	1.22%	4.25%	3.85%	2.37%	2.31%	4.21%	3.26%	-4.17%	2.17%		
US 59 0.5 MI SOUTH OF CO RD F16	2017	2322	2508	2658	2824	3026	3068	2932	2983	2897	2797	2833		
DEFIANCE	2016	2324	2325	2722	2755	3004	3159	3162	3096	3072	2934	2766	2516	<b>2820</b>
224-83	%	-0.09%	7.87%	-2.35%	2.50%	0.73%	-2.88%	-7.27%	-3.65%	-5.70%	-4.67%	2.42%		
US 18 3.8 MI EAST OF CO RD W14	2017	1974	2130	2246	2542	2705	2848	2666	2601	2613	2628	2431		
WEST UNION	2016	2054	2053	2321	2569	2754	2843	NO DATA	NO DATA	NO DATA	NO DATA	2282	2116	<b>NO AADT</b>
226-33	%	-3.89%	3.75%	-3.23%	-1.05%	-1.78%	0.18%					6.53%		
IA 117 2.5 MI SOUTH OF US 65	2017	793	869	938	1057	1113	1157	1051	1106	1086	1027	959		
MINGO	2016	763	776	904	1002	1084	1170	1100	NO DATA	NO DATA	1121	NO DATA	858	<b>NO AADT</b>
228-50	%	3.93%	11.98%	3.76%	5.49%	2.68%	-1.11%	-4.45%			-8.39%			
IA 78 1.2 MI WEST OF CO RD X23	2017	715	747	778	845	885	891	749	779	824	833	760		
WINFIELD	2016	711	726	762	872	879	889	803	804	830	855	783	707	<b>802</b>
229-44	%	0.56%	2.89%	2.10%	-3.10%	0.68%	0.22%	-6.72%	-3.11%	-0.72%	-2.57%	-2.94%		
US 169 3.5 MI SOUTH OF SOUTH JCT IA 92	2017	1453	1588	1649	1813	1991	1979	1863	1772	1818	1823	1784		
WINTERSET	2016	1447	1485	1674	1782	1895	1880	1860	1874	1874	1905	1786	1586	<b>1754</b>
230-61	%	0.41%	6.94%	-1.49%	1.74%	5.07%	5.27%	0.16%	-5.44%	-2.99%	-4.30%	-0.11%		
IA 148 9.3 MI NORTH OF IA 92	2017	737	771	853	926	994	939	877	932	957	932	921		
ANITA	2016	729	715	827	875	977	995	915	940	963	964	888	804	<b>883</b>
231-15	%	1.10%	7.83%	3.14%	5.83%	1.74%	-5.63%	-4.15%	-0.85%	-0.62%	-3.32%	3.72%		
IA 110 1.5 MI SOUTH OF CO RD C65	2017	1140	1202	1188	NO DATA	NO DATA	NO DATA	NO DATA	NO DATA	NO DATA	1370	NO DATA		
SCHALLER	2016	1201	1166	1255	1319	1377	1439	1446	1479	1478	1409	1211	1196	<b>1331</b>
233-11	%	-5.08%	3.09%	-5.34%							-2.77%			
IA 12 2.5 MI NORTH OF CO RD K18	2017	1040	1149	1230	1346	1423	1492	1388	1387	1367	1327	1221		
AKRON	2016	1080	1117	1222	1316	1392	1465	1405	1413	1371	1403	1305	1185	<b>1306</b>
234-75	%	-3.70%	2.86%	0.65%	2.28%	2.23%	1.84%	-1.21%	-1.84%	-0.29%	-5.42%	-6.44%		
IA 143 3.4 MI SOUTH OF IA 10	2017	840	944	993	1030	1099	1106	1056	1092	1117	1139	1163		
MARCUS	2016	915	903	994	1060	1118	NO DATA	NO DATA	NO DATA	1127	1125	1091	917	<b>NO AADT</b>
235-71	%	-8.20%	4.54%	-0.10%	-2.83%	-1.70%				-0.89%	1.24%	6.60%		

**COMPARISON OF THE MONTHLY AVERAGE DAILY TRAFFIC (MADT) FOR 2017 AND 2016  
AND ANNUAL AVERAGE DAILY TRAFFIC (AADT)**

**RURAL PRIMARY**

<b>LOCATION AND STATION NUMBER</b>		<b>JAN. MADT</b>	<b>FEB. MADT</b>	<b>MARCH MADT</b>	<b>APRIL MADT</b>	<b>MAY MADT</b>	<b>JUNE MADT</b>	<b>JULY MADT</b>	<b>AUG. MADT</b>	<b>SEPT. MADT</b>	<b>OCT. MADT</b>	<b>NOV. MADT</b>	<b>DEC. MADT</b>	<b>ANNUAL AADT</b>
US 71 5.3 MI SOUTH OF US 20 SAC CITY 236-81	2017	1211	1357	1461	1686	1737	1848	1885	1836	1829	1750	1710		
	2016	NO DATA	NO DATA	NO DATA	NO DATA	NO DATA	1514	1615	1513	1578	1656	1592	1408	NO AADT
	%						22.06%	16.72%	21.35%	15.91%	5.68%	7.41%		
IA 149 2.1 MI NORTH OF IA 78 MARTINSBURG 238-54	2017	1077	1169	1232	1286	1314	1261	1213	1231	1255	1259	1249		
	2016	1083	1123	1219	1314	1300	1279	1285	1280	1279	1291	1222	1138	1234
	%	-0.55%	4.10%	1.07%	-2.13%	1.08%	-1.41%	-5.60%	-3.83%	-1.88%	-2.48%	2.21%		
IA 2 3.0 MI EAST OF US 275 SIDNEY 240-36	2017	1686	1898	1978	2065	2153	2189	2066	2205	2088	2089	2032		
	2016	1771	1837	1978	1986	2136	2118	1972	2089	2058	2070	1907	1817	1978
	%	-4.80%	3.32%	0.00%	3.98%	0.80%	3.35%	4.77%	5.55%	1.46%	0.92%	6.55%		
IA 13 6.3 MI SOUTH OF US 20 RYAN 241-28	2017	3642	3953	4064	4487	4928	5038	5081	4906	4867	4852	4453		
	2016	3680	3743	4184	4339	4842	5089	4826	4726	4722	4876	4417	3929	4448
	%	-1.03%	5.61%	-2.87%	3.41%	1.78%	-1.00%	5.28%	3.81%	3.07%	-0.49%	0.82%		
US 61 3.8 MI NORTH OF CO RD F41 ELDRIDGE 242-82	2017	15719	16856	17577	18481	19004	19728	19286	19516	19160	18977	18191		
	2016	15430	16141	17157	17824	18400	19276	18754	18757	18714	18856	17927	16455	17808
	%	1.87%	4.43%	2.45%	3.69%	3.28%	2.34%	2.84%	4.05%	2.38%	0.64%	1.47%		
US 30 0.3 MI EAST OF CO RD Z24 DEWITT 243-23	2017	8922	9562	9808	10284	10431	10841	10380	10579	10485	10478	10146		
	2016	8626	9112	9590	10018	10190	10527	10084	10182	10217	10325	10104	9451	9869
	%	3.43%	4.94%	2.27%	2.66%	2.37%	2.98%	2.94%	3.90%	2.62%	1.48%	0.42%		
IA 1 0.8 MI SOUTH OF CO RD F67 KALONA 244-52	2017	5196	5554	5823	6209	6191	6154	5662	5741	5774	5597	5409		
	2016	5015	5225	5627	6021	6257	6159	5929	5901	6040	5970	5756	5377	5773
	%	3.61%	6.30%	3.48%	3.12%	-1.05%	-0.08%	-4.50%	-2.71%	-4.40%	-6.25%	-6.03%		
US 20 1.5 MI EAST OF CO RD V62 JESUP 245-07	2017	9033	9886	10409	11228	11324	11736	11927	12042	11814	11583	11087		
	2016	9338	9667	10636	10900	11534	11955	11444	NO DATA	NO DATA	NO DATA	10649	9723	NO AADT
	%	-3.27%	2.27%	-2.13%	3.01%	-1.82%	-1.83%	4.22%				4.11%		
IA 141 1.0 MI EAST OF WILLIS AVE PERRY 246-25	2017	8923	9674	9715	10676	11511	11416	10933	11427	11147	11016	10697		
	2016	8834	9117	9865	10209	10489	10535	10109	10499	10196	10333	10224	9540	9996
	%	1.01%	6.11%	-1.52%	4.57%	9.74%	8.36%	8.15%	8.84%	9.33%	6.61%	4.63%		
US 20 3.0 MI EAST OF EAST JCT IA 17 WEBSTER CITY 247-40	2017	7428	8192	8954	9451	10061	10358	10503	10485	10138	9915	9734		
	2016	7719	7702	9132	9220	9908	10211	10143	10075	9924	9905	9784	8176	9325
	%	-3.77%	6.36%	-1.95%	2.51%	1.54%	1.44%	3.55%	4.07%	2.16%	0.10%	-0.51%		

**COMPARISON OF THE MONTHLY AVERAGE DAILY TRAFFIC (MADT) FOR 2017 AND 2016  
AND ANNUAL AVERAGE DAILY TRAFFIC (AADT)**

**RURAL PRIMARY**

LOCATION AND STATION NUMBER		JAN. MADT	FEB. MADT	MARCH MADT	APRIL MADT	MAY MADT	JUNE MADT	JULY MADT	AUG. MADT	SEPT. MADT	OCT. MADT	NOV. MADT	DEC. MADT	ANNUAL AADT
IA 21 2.8 MI NORTH OF US 6 BELLE PLAINE 248-48	2017	981	1085	1119	1229	1226	1315	1265	1279	1236	1214	1183		
	2016	1006	1029	1146	1233	1336	1313	1274	1346	1297	1302	1199	1054	<b>1211</b>
	%	-2.49%	5.44%	-2.36%	-0.32%	-8.23%	0.15%	-0.71%	-4.98%	-4.70%	-6.76%	-1.33%		
US 218 3.5 MI SOUTH OF IA 921 HILLS 249-52	2017	18476	19777	20868	21361	20794	22082	21813	22125	22034	21909	21542		
	2016	18086	19386	21228	21354	21748	22451	22091	22251	21734	21958	21278	19783	<b>21112</b>
	%	2.16%	2.02%	-1.70%	0.03%	-4.39%	-1.64%	-1.26%	-0.57%	1.38%	-0.22%	1.24%		
US 65 2.1 MI NORTH OF IA 163 PLEASANT HILL 250-77	2017	24555	27084	27764	30159	<b>TRAFFIC VARIATIONS FOR SITE MOVED TO MUNICIPAL PRIMARY GROUP AS OF MAY 1ST</b>								
	2016	23951	25291	26876	28652	30001	31147	29740	32900	29583	29802	28631	26602	<b>28598</b>
	%	2.52%	7.09%	3.30%	5.26%									
US 18/63 0.5 MI SOUTH OF CO RD B54 NEW HAMPTON 252-19	2017	4780	5346	5636	5908	6127	6399	6211	6246	6212	6158	5831		
	2016	4837	4998	5613	5800	6125	6371	6228	6111	5946	6053	5771	5131	<b>5749</b>
	%	-1.18%	6.96%	0.41%	1.86%	0.03%	0.44%	-0.27%	2.21%	4.47%	1.73%	1.04%		
US 218 3.5 MI SOUTH OF CO RD T64 CHARLES CITY 253-34	2017	7650	8317	9278	9822	10469	11164	11213	11015	10583	10315	9989		
	2016	7667	7921	9320	9319	10387	10918	11063	10763	10555	10021	9712	8488	<b>9678</b>
	%	-0.22%	5.00%	-0.45%	5.40%	0.79%	2.25%	1.36%	2.34%	0.27%	2.93%	2.85%		
IA 60 2.5 MI NORTH OF IA 9 SIBLEY 254-72	2017	3183	3454	3846	3964	4317	4447	NO DATA	4487	4219	4088	4055		
	2016	3098	3140	3731	3722	NO DATA	NO DATA	4532	4367	4159	4022	3836	3556	<b>NO AADT</b>
	%	2.74%	10.00%	3.08%	6.50%				2.75%	1.44%	1.64%	5.71%		
US 20 1.0 MI EAST OF US 65 IOWA FALLS 255-42	2017	7248	8078	8829	8929	9703	9934	10100	10298	9670	9634	9911		
	2016	7372	7767	9147	9031	9854	9979	9892	9982	9952	9881	9640	8097	<b>9216</b>
	%	-1.68%	4.00%	-3.48%	-1.13%	-1.53%	-0.45%	2.10%	3.17%	-2.83%	-2.50%	2.81%		
US 18 3.3 MI EAST OF I 35 MASON CITY 256-17	2017	6742	7294	8206	8884	9361	10232	10588	10175	9466	9102	8869		
	2016	6541	6677	8083	8265	9204	10050	10822	NO DATA	NO DATA	NO DATA	9031	7527	<b>NO AADT</b>
	%	3.07%	9.24%	1.52%	7.49%	1.71%	1.81%	-2.16%				-1.79%		
US 20 3.6 MI WEST OF WEST JCT US 59 HOLSTEIN 257-47	2017	NO DATA	NO DATA	NO DATA	NO DATA	NO DATA	NO DATA	NO DATA	NO DATA	NO DATA	NO DATA	NO DATA		
	2016	3108	3099	3401	NO DATA	NO DATA	NO DATA	NO DATA	NO DATA	NO DATA	NO DATA	NO DATA	NO DATA	<b>NO AADT</b>
	%													
US 30 0.6 MI EAST OF CO RD V66 BLAIRSTOWN 258-06	2017	6758	7381	7592	8050	8443	8667	8415	8624	8466	8212	7939		
	2016	6650	6815	7548	7694	8112	8398	8358	8483	8380	8160	7877	6992	<b>7789</b>
	%	1.62%	8.31%	0.58%	4.63%	4.08%	3.20%	0.68%	1.66%	1.03%	0.64%	0.79%		

**COMPARISON OF THE MONTHLY AVERAGE DAILY TRAFFIC (MADT) FOR 2017 AND 2016  
AND ANNUAL AVERAGE DAILY TRAFFIC (AADT)**

**RURAL PRIMARY**

<b>LOCATION AND STATION NUMBER</b>		<b>JAN. MADT</b>	<b>FEB. MADT</b>	<b>MARCH MADT</b>	<b>APRIL MADT</b>	<b>MAY MADT</b>	<b>JUNE MADT</b>	<b>JULY MADT</b>	<b>AUG. MADT</b>	<b>SEPT. MADT</b>	<b>OCT. MADT</b>	<b>NOV. MADT</b>	<b>DEC. MADT</b>	<b>ANNUAL AADT</b>
US 30 3.5 MI EAST OF IA 1 LISBON 259-16	2017 2016 %	5144 5146 -0.04%	5521 5359 3.02%	5755 5789 -0.59%	6060 6057 0.05%	6252 6312 -0.95%	6427 6445 -0.28%	6157 6282 -1.99%	6350 6319 0.49%	6363 6347 0.25%	6145 6297 -2.41%	5952 6021 -1.15%	5367	<b>5978</b>
US 71 0.6 MI SOUTH OF CO RD J64 BRADDYVILLE 260-73	2017 2016 %	2051 2121 -3.30%	2255 2266 -0.49%	2398 2410 -0.50%	2480 2459 0.85%	2587 2576 0.43%	2665 2592 2.82%	2512 2506 0.24%	2484 2416 2.81%	2484 2457 1.10%	2511 2495 0.64%	2429 2435 -0.25%	2263	<b>2416</b>
US 169 2.3 MI NORTH OF CO RD D14 FORT DODGE 261-94	2017 2016 %	4990 5181 -3.69%	5331 5149 3.53%	5679 5638 0.73%	6224 6181 0.70%	6321 6673 -5.27%	6453 6411 0.66%	6369 6194 2.83%	6320 6297 0.37%	6422 6356 1.04%	6159 6305 -2.32%	6001 6034 -0.55%	5758	<b>6015</b>
US 63 1.6 MI SOUTH OF IA 2 BLOOMFIELD 262-26	2017 2016 %	1853 1875 -1.17%	2037 1986 2.57%	2200 2229 -1.30%	2244 2274 -1.32%	2437 2457 -0.81%	2531 2538 -0.28%	2556 2645 -3.36%	2478 2497 -0.76%	2427 2440 -0.53%	2304 2378 -3.11%	2203 2306 -4.47%	2031	<b>2305</b>
US 52 0.3 MI EAST OF CO RD X47 GARNAVILLO 263-22	2017 2016 %	1959 1981 -1.11%	2223 2050 8.44%	2281 2260 0.93%	2504 2457 1.91%	2698 2617 3.10%	2742 2739 0.11%	2811 2746 2.37%	2754 2779 -0.90%	2778 2782 -0.14%	2681 2780 -3.56%	2412 2462 -2.03%	2152	<b>2484</b>
IA 27 3.0 MI SOUTH OF CO RD W62 ARGYLE 264-56	2017 2016 %	5276 5274 0.04%	5784 5520 4.78%	6869 6949 -1.15%	6685 6471 3.31%	7005 7138 -1.86%	7497 7601 -1.37%	7631 7889 -3.27%	7560 7405 2.09%	6910 7076 -2.35%	6806 7009 -2.90%	6591 6641 -0.75%	5962	<b>6745</b>
US 61 1.0 MI NORTH OF CO RD E17 MAQUOKETA 265-49	2017 2016 %	6770 6750 0.30%	7467 7098 5.20%	7809 7778 0.40%	8375 8071 3.77%	8733 8509 2.63%	9253 8978 3.06%	9149 8893 2.88%	9061 8766 3.37%	9098 8686 4.74%	8821 8567 2.96%	8250 8063 2.32%	7009	<b>8097</b>
IA 2 0.8 MI WEST OF US 63 WEST GROVE 266-26	2017 2016 %	1501 1503 -0.13%	1666 1593 4.58%	1776 1715 3.56%	1854 1822 1.76%	2012 1899 5.95%	1994 1907 4.56%	1920 1883 1.96%	1906 1821 4.67%	1937 1899 2.00%	1864 1897 -1.74%	1768 1743 1.43%	1589	<b>1772</b>
US 34 3.0 MI WEST OF US 59 EMERSON 267-65	2017 2016 %	4112 4101 0.27%	4321 4029 7.25%	4482 4558 -1.67%	4650 4600 1.09%	4930 4953 -0.46%	4836 4852 -0.33%	4579 4608 -0.63%	4705 4714 -0.19%	4730 4797 -1.40%	4652 4789 -2.86%	4578 4554 0.53%	4407	<b>4580</b>
US 30 3.5 MI NE OF NORTH JCT IA 37 DOW CITY 268-24	2017 2016 %	2646 2683 -1.38%	2833 2691 5.28%	3083 3137 -1.72%	3315 3232 2.57%	3505 3390 3.39%	3477 3489 -0.34%	3338 3399 -1.79%	3320 3405 -2.50%	3306 3388 -2.42%	3205 3271 -2.02%	3305 3140 5.25%	2930	<b>3180</b>





**COMPARISON OF THE MONTHLY AVERAGE DAILY TRAFFIC (MADT) FOR 2017 AND 2016  
AND ANNUAL AVERAGE DAILY TRAFFIC (AADT)**

**RURAL PRIMARY**

<b>LOCATION AND STATION NUMBER</b>		<b>JAN. MADT</b>	<b>FEB. MADT</b>	<b>MARCH MADT</b>	<b>APRIL MADT</b>	<b>MAY MADT</b>	<b>JUNE MADT</b>	<b>JULY MADT</b>	<b>AUG. MADT</b>	<b>SEPT. MADT</b>	<b>OCT. MADT</b>	<b>NOV. MADT</b>	<b>DEC. MADT</b>	<b>ANNUAL AADT</b>
IA 13 1.5 MI NORTH OF CO RD C64 DUNDEE 279-28	2017 2016 %	2082 2027 2.71%	2204 2117 4.11%	2250 2272 -0.97%	2443 2580 -5.31%	2636 2942 -10.40%	2731 2897 -5.73%	2649 2663 -0.53%	2548 2516 1.27%	2616 2568 1.87%	2642 2625 0.65%	2365 2408 -1.79%	2239	<b>2488</b>
IA 2 2.0 MI WEST OF I 35 LEON 280-27	2017 2016 %	1143 1074 6.42%	1248 1138 9.67%	1269 1245 1.93%	1360 1384 -1.73%	1417 1470 -3.61%	1475 1526 -3.34%	1360 1400 -2.86%	1376 1388 -0.86%	1368 1372 -0.29%	1376 1353 1.70%	1352 1361 -0.66%	1201	<b>1326</b>
US 151 4.4 MI SOUTH OF IA 38 MONTICELLO 281-53	2017 2016 %	9919 9843 0.77%	10700 10216 4.74%	11221 11369 -1.30%	12057 11632 3.65%	12781 12610 1.36%	13445 13382 0.47%	13972 13886 0.62%	13347 13069 2.13%	12774 12624 1.19%	12706 12783 -0.60%	12126 11939 1.57%	10570	<b>11994</b>
US 52 9.5 MI SOUTH OF IA 62 BELLEVUE 282-49	2017 2016 %	572 662 -13.60%	699 684 2.19%	707 762 -7.22%	816 831 -1.81%	937 1035 -9.47%	1041 1083 -3.88%	1060 1096 -3.28%	983 1023 -3.91%	1025 1024 0.10%	967 1063 -9.03%	766 813 -5.78%	577	<b>888</b>
US 61/218 0.8 MI SOUTH OF N JCT US 61/218 KEOKUK 283-56	2017 2016 %	7434 7875 -5.60%	8299 8224 0.91%	8387 8513 -1.48%	8677 8848 -1.93%	8801 9050 -2.75%	8842 9497 -6.90%	8410 8915 -5.66%	8711 9220 -5.52%	8584 9169 -6.38%	8814 9100 -3.14%	8131 8537 -4.76%	7818	<b>8730</b>
IA 9 1.0 MI WEST OF 6TH ST LANSING 284-03	2017 2016 %	1455 1597 -8.89%	1650 1643 0.43%	1692 1782 -5.05%	1994 2046 -2.54%	2178 2286 -4.72%	2255 2328 -3.14%	2412 2324 3.79%	2335 2394 -2.46%	2202 2169 1.52%	2086 2125 -1.84%	1776 1819 -2.36%	1557	<b>2006</b>
US 20 1.3 MI EAST OF IA 4 ROCKWELL CITY 285-13	2017 2016 %	4568 4752 -3.87%	5046 4840 4.26%	5700 6041 -5.64%	5968 5962 0.10%	6453 6548 -1.45%	6746 6931 -2.67%	6982 7085 -1.45%	6837 6950 -1.63%	6672 6794 -1.80%	6189 6241 -0.83%	6399 6137 4.27%	5069	<b>6112</b>
US 34 2.0 MI WEST OF I 29 GLENWOOD 286-65	2017 2016 %	5249 5307 -1.09%	5767 5568 3.57%	6193 6301 -1.71%	6545 6556 -0.17%	7101 7057 0.62%	7366 7354 0.16%	7153 7229 -1.05%	7296 7186 1.53%	6949 7037 -1.25%	6913 7003 -1.29%	7167 6305 13.67%	5745	<b>6554</b>
US 20 0.6 MI EAST OF US 75 LAWTON 287-97	2017 2016 %	9872 10409 -5.16%	10763 10520 2.31%	11368 11288 0.71%	12032 11724 2.63%	12614 12311 2.46%	13138 12316 6.67%	13104 11943 9.72%	13634 12397 9.98%	13134 11761 11.67%	13350 12169 9.70%	12525 11316 10.68%	10855	<b>11584</b>
<b>TOTAL</b>	<b>2017 2016 %</b>	<b>389745 389435 0.08%</b>	<b>423374 403346 4.97%</b>	<b>444532 445908 -0.31%</b>	<b>429126 420131 2.14%</b>	<b>408084 406208 0.46%</b>	<b>431972 430568 0.33%</b>	<b>407616 405870 0.43%</b>	<b>389316 385905 0.88%</b>	<b>384118 381518 0.68%</b>	<b>379861 381553 -0.44%</b>	<b>403269 399912 0.84%</b>		

NOTE: Numbers in red denote estimated traffic due to road construction, inaccurate, or insufficient data. Monthly data for sites without comparable data are not included in TOTAL.  
NOTE: Site 236-81 IA 196 is now classified as US 71 so due to the rerouting of US 71 traffic the 2017 MADT's will not be used in the total Rural Primary percentage calculations.

**COMPARISON OF THE MONTHLY AVERAGE DAILY TRAFFIC (MADT) FOR 2017 AND 2016  
AND ANNUAL AVERAGE DAILY TRAFFIC (AADT)**

**RURAL COUNTY - PAVED**

<b>LOCATION AND STATION NUMBER</b>		<b>JAN. MADT</b>	<b>FEB. MADT</b>	<b>MARCH MADT</b>	<b>APRIL MADT</b>	<b>MAY MADT</b>	<b>JUNE MADT</b>	<b>JULY MADT</b>	<b>AUG. MADT</b>	<b>SEPT. MADT</b>	<b>OCT. MADT</b>	<b>NOV. MADT</b>	<b>DEC. MADT</b>	<b>ANNUAL AADT</b>
CO RD P14 2.7 MI NORTH OF CO RD E33 CHURDAN 300-37	2017	NO DATA	NO DATA	NO DATA	NO DATA	NO DATA	NO DATA	NO DATA	NO DATA	NO DATA	339	NO DATA		
	2016	193	197	233	269	273	267	240	236	251	329	255	219	247
	%										3.04%			
CO RD S14 0.8 MI SOUTH OF CO RD E29 NEVADA 301-85	2017	788	852	941	1088	1138	1151	1098	1028	1058	1043	1028		
	2016	778	776	925	1113	1134	1156	1049	1028	1053	1088	962	847	992
	%	1.29%	9.79%	1.73%	-2.25%	0.35%	-0.43%	4.67%	0.00%	0.47%	-4.14%	6.86%		
CO RD M55 0.2 MI NORTH OF IA 141 MANILLA 302-24	2017	653	714	801	847	912	859	NO DATA	NO DATA	NO DATA	NO DATA	795		
	2016	666	666	828	864	913	889	881	856	836	873	831	715	818
	%	-1.95%	7.21%	-3.26%	-1.97%	-0.11%	-3.37%							
CO RD K45 2.25 MI SOUTH OF IA 175 ONAWA 303-67	2017	837	931	1031	1156	1246	1247	1212	1151	1159	1163	1161		
	2016	894	944	1044	1148	1241	1264	1210	1211	1213	1201	1109	956	1120
	%	-6.38%	-1.38%	-1.25%	0.70%	0.40%	-1.34%	0.17%	-4.95%	-4.45%	-3.16%	4.69%		
CO RD V45 3.5 MI NORTH OF IA 92 SIGOURNEY 304-54	2017	533	581	640	695	727	702	696	646	678	754	672		
	2016	554	571	647	707	694	700	648	631	677	701	625	566	643
	%	-3.79%	1.75%	-1.08%	-1.70%	4.76%	0.29%	7.41%	2.38%	0.15%	7.56%	7.52%		
CO RD E53 1.75 MI EAST OF IA 25 SCRANTON 306-37	2017	425	NO DATA	513	568	589	600	545	563	577	613	548		
	2016	411	379	537	585	596	603	583	556	567	627	546	483	539
	%	3.41%		-4.47%	-2.91%	-1.17%	-0.50%	-6.52%	1.26%	1.76%	-2.23%	0.37%		
CO RD R38 2.2 MI NORTH OF CO RD C54 CLARION 307-99	2017	1089	1272	1335	1432	1480	1527	1440	1454	1490	1533	1429		
	2016	1156	1196	1341	1471	1501	1574	1468	1537	1519	1610	1421	1255	1421
	%	-5.80%	6.35%	-0.45%	-2.65%	-1.40%	-2.99%	-1.91%	-5.40%	-1.91%	-4.78%	0.56%		
CO RD N32 1.6 MI NORTH OF IA 9 ESTHERVILLE 308-32	2017	239	285	313	389	421	NO DATA	393	377	377	438	389		
	2016	269	264	327	384	NO DATA	395	359	364	375	412	358	287	NO AADT
	%	-11.15%	7.95%	-4.28%	1.30%			9.47%	3.57%	0.53%	6.31%	8.66%		
CO RD K52 1.5 MI SOUTH OF US 18 HULL 309-84	2017	1215	NO DATA	1421	1580	1525	1533	1478	1494	1533	1599	1541		
	2016	1022	1091	1294	1481	1521	1448	1464	1446	1536	1598	1399	1246	1379
	%	18.88%		9.81%	6.68%	0.26%	5.87%	0.96%	3.32%	-0.20%	0.06%	10.15%		
CO RD Y52 1.5 MI SOUTH OF US 30 GRAND MOUND 310-23	2017	402	433	472	545	560	559	508	523	525	577	527		
	2016	409	422	478	532	584	551	508	517	528	577	536	443	507
	%	-1.71%	2.61%	-1.26%	2.44%	-4.11%	1.45%	0.00%	1.16%	-0.57%	0.00%	-1.68%		

**COMPARISON OF THE MONTHLY AVERAGE DAILY TRAFFIC (MADT) FOR 2017 AND 2016  
AND ANNUAL AVERAGE DAILY TRAFFIC (AADT)**

**RURAL COUNTY - PAVED**

LOCATION AND STATION NUMBER		JAN. MADT	FEB. MADT	MARCH MADT	APRIL MADT	MAY MADT	JUNE MADT	JULY MADT	AUG. MADT	SEPT. MADT	OCT. MADT	NOV. MADT	DEC. MADT	ANNUAL AADT
CO RD W12 3.5 MI SOUTH OF US 30 WATKINS 311-06	2017 2016 %	697 688 1.31%	737 726 1.52%	758 786 -3.56%	829 856 -3.15%	881 898 -1.89%	844 855 -1.29%	800 766 4.44%	819 794 3.15%	848 851 -0.35%	820 863 -4.98%	815 804 1.37%	702	799
CO RD E26 2.7 MI WEST OF CO RD R38 BOONE 312-08	2017 2016 %	1406 1282 9.67%	NO DATA 1276	1633 1499 8.94%	1805 1633 10.53%	1856 1620 14.57%	1893 1674 13.08%	1857 1665 11.53%	1893 1834 3.22%	1869 1994 -6.27%	1865 1848 0.92%	1753 1706 2.75%	1525	1630
CO RD D42 0.2 MI EAST OF IA 13 MANCHESTER 313-28	2017 2016 %	554 581 -4.65%	597 564 5.85%	647 656 -1.37%	768 763 0.66%	903 860 5.00%	983 896 9.71%	961 870 10.46%	900 868 3.69%	872 841 3.69%	818 829 -1.33%	741 724 2.35%	617	756
CO RD 105 1.3 MI EAST OF CO RD S56 NORTHWOOD 314-98	2017 2016 %	583 641 -9.05%	653 632 3.32%	689 751 -8.26%	785 834 -5.88%	846 846 0.00%	872 887 -1.69%	767 821 -6.58%	NO DATA 817	NO DATA 766	749 758 -1.19%	708 686 3.21%	609	754
CO RD 5.5 MI WEST OF US 63 DRAKESVILLE 315-26	2017 2016 %	517 505 2.38%	565 517 9.28%	613 618 -0.81%	700 709 -1.27%	NO DATA 799	NO DATA 908	NO DATA 816	800 735 8.84%	786 741 6.07%	708 758 -6.60%	627 629 -0.32%	555	691
CO RD D36 2.8 MI EAST OF CO RD N57 ROCKWELL CITY 316-13	2017 2016 %	783 788 -0.63%	828 766 8.09%	931 928 0.32%	1000 1017 -1.67%	1070 1050 1.90%	1111 1071 3.73%	915 999 -8.41%	NO DATA 1007	994 NO DATA	1002 NO DATA	964 NO DATA	NO DATA	NO AADT
<b>TOTAL RURAL COUNTY PAVED</b>	<b>2017 2016 %</b>	<b>10721 10644 0.72%</b>	<b>8448 8044 5.02%</b>	<b>12738 12659 0.62%</b>	<b>14187 14097 0.64%</b>	<b>13733 13458 2.04%</b>	<b>13881 13568 2.31%</b>	<b>12670 12410 2.10%</b>	<b>11648 11521 1.10%</b>	<b>11772 11895 -1.03%</b>	<b>13019 13199 -1.36%</b>	<b>12734 12336 3.23%</b>		

NOTE: Numbers in red denote estimated traffic due to road construction, inaccurate, or insufficient data. Monthly data for sites without comparable data are not include in TOTAL.

**COMPARISON OF THE MONTHLY AVERAGE DAILY TRAFFIC (MADT) FOR 2017 AND 2016  
AND ANNUAL AVERAGE DAILY TRAFFIC (AADT)**

**RURAL COUNTY - GRAVEL**

LOCATION AND STATION NUMBER		JAN. MADT	FEB. MADT	MARCH MADT	APRIL MADT	MAY MADT	JUNE MADT	JULY MADT	AUG. MADT	SEPT. MADT	OCT. MADT	NOV. MADT	DEC. MADT	ANNUAL AADT
CO RD B30 0.5 MI EAST OF CO RD L48 PRIMGHAR 400-71	2017	15	15	14	18	24	22	21	18	20	36	23		
	2016	13	10	14	19	27	21	36	NO DATA	NO DATA	49	24	14	NO AADT
	%	15.38%	50.00%	0.00%	-5.26%	-11.11%	4.76%	-41.67%			-26.53%	-4.17%		
LOCAL ROAD 1.80 MI NORTH OF CO RD E36 CLUTIER 401-86	2017	19	25	24	31	36	31	38	25	32	37	42		
	2016	25	25	26	29	NO DATA	NO DATA	39	34	38	43	39	26	NO AADT
	%	-24.00%	0.00%	-7.69%	6.90%			-2.56%	-26.47%	-15.79%	-13.95%	7.69%		
LOCAL ROAD .80 MI EAST OF CO RD V18 CLUTIER 402-86	2017	NO DATA	NO DATA	NO DATA	NO DATA	42	40	44	38	44	51	50		
	2016	30	32	39	50	58	51	45	49	56	64	NO DATA	NO DATA	NO AADT
	%					-27.59%	-21.57%	-2.22%	-22.45%	-21.43%	-20.31%			
CO RD H47 5.0 MI SOUTH OF US 34 ALBIA 403-68	2017	84	93	94	99	110	111	105	103	96	102	117		
	2016	79	77	95	97	100	109	106	103	100	115	109	95	99
	%	6.33%	20.78%	-1.05%	2.06%	10.00%	1.83%	-0.94%	0.00%	-4.00%	-11.30%	7.34%		
LOCAL ROAD 2.5 MI NORTH OF US 18 BASSETT 405-19	2017	66	60	54	63	108	74	64	58	NO DATA	70	70		
	2016	51	50	54	75	95	67	61	63	65	74	65	60	65
	%	29.41%	20.00%	0.00%	-16.00%	13.68%	10.45%	4.92%	-7.94%		-5.41%	7.69%		
LOCAL ROAD 2.0 MI EAST OF US 169 LORIMOR 406-88	2017	51	50	57	63	68	75	59	61	51	58	66		
	2016	51	50	57	59	68	74	57	56	54	57	61	61	59
	%	0.00%	0.00%	0.00%	6.78%	0.00%	1.35%	3.51%	8.93%	-5.56%	1.75%	8.20%		
CO ROAD H23 2.0 MI EAST OF US 169 LORIMOR 407-88	2017	56	58	63	73	78	91	75	69	66	79	73		
	2016	65	61	60	64	77	84	70	65	61	62	64	72	67
	%	-13.85%	-4.92%	5.00%	14.06%	1.30%	8.33%	7.14%	6.15%	8.20%	27.42%	14.06%		
<b>TOTAL RURAL COUNTY GRAVEL</b>	<b>2017</b>	<b>291</b>	<b>301</b>	<b>306</b>	<b>347</b>	<b>430</b>	<b>413</b>	<b>385</b>	<b>354</b>	<b>289</b>	<b>433</b>	<b>391</b>		
	<b>2016</b>	<b>284</b>	<b>273</b>	<b>306</b>	<b>343</b>	<b>425</b>	<b>406</b>	<b>378</b>	<b>370</b>	<b>309</b>	<b>464</b>	<b>362</b>		
	<b>%</b>	<b>2.46%</b>	<b>10.26%</b>	<b>0.00%</b>	<b>1.17%</b>	<b>1.18%</b>	<b>1.72%</b>	<b>1.85%</b>	<b>-4.32%</b>	<b>-6.47%</b>	<b>-6.68%</b>	<b>8.01%</b>		
<b>TOTAL RURAL COUNTY PAVED &amp; GRAVEL</b>	<b>2017</b>	<b>11012</b>	<b>8749</b>	<b>13044</b>	<b>14534</b>	<b>14163</b>	<b>14294</b>	<b>13055</b>	<b>12002</b>	<b>12061</b>	<b>13452</b>	<b>13125</b>		
	<b>2016</b>	<b>10928</b>	<b>8317</b>	<b>12965</b>	<b>14440</b>	<b>13883</b>	<b>13974</b>	<b>12788</b>	<b>11891</b>	<b>12204</b>	<b>13663</b>	<b>12698</b>		
	<b>%</b>	<b>0.77%</b>	<b>5.19%</b>	<b>0.61%</b>	<b>0.65%</b>	<b>2.02%</b>	<b>2.29%</b>	<b>2.09%</b>	<b>0.93%</b>	<b>-1.17%</b>	<b>-1.54%</b>	<b>3.36%</b>		

NOTE: Numbers in red denote estimated traffic due to road construction, inaccurate, or insufficient data. Monthly data for sites without comparable data are not included in TOTAL.

**COMPARISON OF THE MONTHLY AVERAGE DAILY TRAFFIC (MADT) FOR 2017 AND 2016  
AND ANNUAL AVERAGE DAILY TRAFFIC (AADT)**

**RECREATIONAL PRIMARY**

LOCATION AND STATION NUMBER		JAN. MADT	FEB. MADT	MARCH MADT	APRIL MADT	MAY MADT	JUNE MADT	JULY MADT	AUG. MADT	SEPT. MADT	OCT. MADT	NOV. MADT	DEC. MADT	ANNUAL AADT
US 71 0.1 MI SOUTH OF CO RD B14	2017	6751	7263	7759	8541	9532	11012	11500	10644	10544	8393	7676		
FOSTORIA	2016	6978	6931	7808	8519	9476	10680	10852	10243	10084	8391	7715	7210	<b>8741</b>
500-21	%	-3.25%	4.79%	-0.63%	0.26%	0.59%	3.11%	5.97%	3.91%	4.56%	0.02%	-0.51%		
IA 5 3.8 MI SOUTH OF US 34	2017	3309	3628	3859	4198	4512	4702	4701	4503	4384	4060	3889		
MORAVIA	2016	3325	3468	3835	4047	4515	4794	4714	4530	4365	4217	3959	3508	<b>4106</b>
501-68	%	-0.48%	4.61%	0.63%	3.73%	-0.07%	-1.92%	-0.28%	-0.60%	0.44%	-3.72%	-1.77%		
IA 415 0.5 MI WEST OF NW POLK CITY RD	2017	6644	7162	7480	8852	10099	10583	10331	10078	10003	9347	8286		
POLK CITY	2016	6329	6597	7587	8665	9730	10379	9540	9374	9304	8837	7732	6938	<b>8418</b>
503-77	%	4.98%	8.56%	-1.41%	2.16%	3.79%	1.97%	8.29%	7.51%	7.51%	5.77%	7.17%		
<b>TOTAL RECREATIONAL PRIMARY</b>	<b>2017</b>	<b>16704</b>	<b>18053</b>	<b>19098</b>	<b>21591</b>	<b>24143</b>	<b>26297</b>	<b>26532</b>	<b>25225</b>	<b>24931</b>	<b>21800</b>	<b>19851</b>		
	<b>2016</b>	<b>16632</b>	<b>16996</b>	<b>19230</b>	<b>21231</b>	<b>23721</b>	<b>25853</b>	<b>25106</b>	<b>24147</b>	<b>23753</b>	<b>21445</b>	<b>19406</b>	<b>17656</b>	
	%	0.43%	6.22%	-0.69%	1.70%	1.78%	1.72%	5.68%	4.46%	4.96%	1.66%	2.29%		

**RECREATIONAL SECONDARY**

LOCATION AND STATION NUMBER		JAN. MADT	FEB. MADT	MARCH MADT	APRIL MADT	MAY MADT	JUNE MADT	JULY MADT	AUG. MADT	SEPT. MADT	OCT. MADT	NOV. MADT	DEC. MADT	ANNUAL AADT
CO RD F25 0.1 MI WEST OF CO RD P18	2017	97	118	131	169	221	263	252	201	186	168	150		
SPRINGBROOK STATE PARK	2016	114	115	131	165	195	249	279	245	207	216	150	116	<b>182</b>
600-39	%	-14.91%	2.61%	0.00%	2.42%	13.33%	5.62%	-9.68%	-17.96%	-10.14%	-22.22%	0.00%		
ENTRANCE TO GEORGE WYTH STATE PARK	2017	276	407	447	828	1212	1662	1579	1113	970	525	336		
WATERLOO	2016	325	366	520	862	1246	1672	1407	1029	949	478	351	260	<b>789</b>
602-07	%	-15.08%	11.20%	-14.04%	-3.94%	-2.73%	-0.60%	12.22%	8.16%	2.21%	9.83%	-4.27%		
ENTRANCE TO GREEN VALLEY STATE PARK	2017	142	190	188	301	573	594	505	436	413	249	144		
GREEN VALLEY STATE PARK	2016	119	167	214	315	532	624	519	388	437	312	149	108	<b>324</b>
603-88	%	19.33%	13.77%	-12.15%	-4.44%	7.71%	-4.81%	-2.70%	12.37%	-5.49%	-20.19%	-3.36%		
<b>TOTAL RECREATIONAL SECONDARY</b>	<b>2017</b>	<b>515</b>	<b>715</b>	<b>766</b>	<b>1298</b>	<b>1785</b>	<b>2519</b>	<b>2336</b>	<b>1750</b>	<b>1569</b>	<b>942</b>	<b>630</b>		
	<b>2016</b>	<b>558</b>	<b>648</b>	<b>865</b>	<b>1342</b>	<b>1778</b>	<b>2545</b>	<b>2205</b>	<b>1662</b>	<b>1593</b>	<b>1006</b>	<b>650</b>	<b>484</b>	
	%	-7.71%	10.34%	-11.45%	-3.28%	0.39%	-1.02%	5.94%	5.29%	-1.51%	-6.36%	-3.08%		
<b>TOTAL RECREATIONAL PRIMARY AND SECONDARY</b>	<b>2017</b>	<b>17219</b>	<b>18768</b>	<b>19864</b>	<b>22889</b>	<b>25928</b>	<b>28816</b>	<b>28868</b>	<b>26975</b>	<b>26500</b>	<b>22742</b>	<b>20481</b>		
	<b>2016</b>	<b>17190</b>	<b>17644</b>	<b>20095</b>	<b>22573</b>	<b>25499</b>	<b>28398</b>	<b>27311</b>	<b>25809</b>	<b>25346</b>	<b>22451</b>	<b>20056</b>	<b>18140</b>	
	%	0.17%	6.37%	-1.15%	1.40%	1.68%	1.47%	5.70%	4.52%	4.55%	1.30%	2.12%		

NOTE: Numbers in red denote estimated traffic due to road construction, inaccurate, or insufficient data. Monthly data for sites without comparable data are not include in TOTAL.

NOTE: Site 600-39 shows lower volumes in May 2016 due to the campground being closed until 5/26/2016

**COMPARISON OF THE MONTHLY AVERAGE DAILY TRAFFIC (MADT) FOR 2017 AND 2016  
AND ANNUAL AVERAGE DAILY TRAFFIC (AADT)**

**MUNICIPAL INTERSTATE**

LOCATION AND STATION NUMBER		JAN. MADT	FEB. MADT	MARCH MADT	APRIL MADT	MAY MADT	JUNE MADT	JULY MADT	AUG. MADT	SEPT. MADT	OCT. MADT	NOV. MADT	DEC. MADT	ANNUAL AADT
I 380 BTWN WILSON AVE AND 33RD AVE CEDAR RAPIDS 701-57	2017	64904	70369	71709	74835	75182	77258	NO DATA	NO DATA	NO DATA	75878	72263		
	2016	63802	67398	70461	73255	73458	74576	72825	75170	77316	76334	70777	64796	71681
	%	1.73%	4.41%	1.77%	2.16%	2.35%	3.60%				-0.60%	2.10%		
I 380 AT J AVE BRIDGE S OF COLDSTREAM CEDAR RAPIDS 703-57	2017	NO DATA	NO DATA	NO DATA	NO DATA	91357	93709	89392	91477	90334	90859	87437		
	2016	73844	76674	79731	NO DATA	NO DATA	NO DATA	NO DATA	NO DATA	NO DATA	NO DATA	NO DATA	NO DATA	NO AADT
	%													
I 29/80 0.6 MI WEST OF IA 192 COUNCIL BLUFFS 704-78	2017	NO DATA	NO DATA	NO DATA	NO DATA	NO DATA	NO DATA	NO DATA	NO DATA	NO DATA	NO DATA	NO DATA		
	2016	NO DATA	NO DATA	NO DATA	NO DATA	NO DATA	NO DATA	NO DATA	NO DATA	NO DATA	NO DATA	NO DATA	NO DATA	NO AADT
	%													
I 74 0.6 MI SOUTH OF US 6 BETTENDORF 705-82	2017	46839	49789	51283	52969	53503	54214	52385	53119	52503	52832	51975		
	2016	46315	48943	50162	NO DATA	NO DATA	NO DATA	NO DATA	NO DATA	49222	51262	49957	47484	NO AADT
	%	1.13%	1.73%	2.23%						6.67%	3.06%	4.04%		
I 280 0.3 MI SOUTH OF IA 22 DAVENPORT 708-82	2017	21175	21632	23310	24667	26608	27931	27667	28472	26787	26309	24067		
	2016	NO DATA	NO DATA	NO DATA	26063	28908	NO DATA	NO DATA	NO DATA	NO DATA	26335	24475	21186	NO AADT
	%				-5.36%	-7.96%					-0.10%	-1.67%		
I 35 NORTH OF ORALABOR RD ANKENY 709-77	2017	58193	62222	64604	67471	68978	70592	68117	70571	67742	69350	66467		
	2016	56862	59294	64165	66493	68497	69703	67197	70889	67088	68888	65619	60579	65440
	%	2.34%	4.94%	0.68%	1.47%	0.70%	1.28%	1.37%	-0.45%	0.97%	0.67%	1.29%		
I 235 0.4 MI NORTH OF EUCLID AVE DES MOINES 714-77	2017	66041	71725	72801	76301	75444	78971	77011	82386	76454	78122	74585		
	2016	63575	66807	71359	74396	74701	78198	74347	79357	73697	75588	71209	66461	72475
	%	3.88%	7.36%	2.02%	2.56%	0.99%	0.99%	3.58%	3.82%	3.74%	3.35%	4.74%		
I 29 1.5 MI EAST OF IA 12 SIOUX CITY 715-97	2017	29412	NO DATA	33792	35637	37308	39283	38208	37643	35884	35357	34328		
	2016	NO DATA	27021	29496	NO DATA	NO DATA	NO DATA	NO DATA	32982	29613	28146	NO DATA	NO DATA	NO AADT
	%			14.56%					14.13%	21.18%	25.62%			
I 35/80 WEST OF 2ND AVE DES MOINES 716-77	2017	85999	91559	96070	101109	104871	109485	107204	109664	104160	105340	NO DATA		
	2016	NO DATA	NO DATA	NO DATA	NO DATA	NO DATA	NO DATA	NO DATA	NO DATA	NO DATA	102229	102650	98685	92462
	%										1.89%	2.62%		
I 380/ US 20 WEST OF EVANSDALE DR. WATERLOO 717-07	2017	NO DATA	NO DATA	NO DATA	NO DATA	NO DATA	NO DATA	36575	36795	35852	35738	34930		
	2016	NO DATA	NO DATA	NO DATA	NO DATA	NO DATA	NO DATA	NO DATA	NO DATA	NO DATA	NO DATA	NO DATA		
	%													
I 80 0.8 MI WEST OF JORDAN CREEK PARKWAY WAUKEE 116-25	2017	PREVIOUSLY GROUPED IN RURAL INTERSTATE				51457	54276	53474	55230	51779	51027	48632		
	2016	PREVIOUSLY GROUPED IN RURAL INTERSTATE				48670	51105	51481	52446	48933	48293	46016	42811	45973
	%					5.73%	6.20%	3.87%	5.31%	5.82%	5.66%	5.68%		
I 80 1.8 MI EAST OF EAST JCT. I 35/80/235 ALTOONA 117-77	2017	PREVIOUSLY GROUPED IN RURAL INTERSTATE				87926	92573	91554	92989	86835	86756	85411		
	2016	PREVIOUSLY GROUPED IN RURAL INTERSTATE				85168	89346	87963	87898	78454	71876	69722	60948	77337
	%					3.24%	3.61%	4.08%	5.79%	10.68%	20.70%	22.50%		
I 380 6.0 MI NORTH OF I 80 NORTH LIBERTY 125-52	2017	PREVIOUSLY GROUPED IN RURAL INTERSTATE				57667	59405	57756	59411	58947	58832	56528		
	2016	PREVIOUSLY GROUPED IN RURAL INTERSTATE				56105	58066	57265	58891	NO DATA	NO DATA	55524	49866	NO AADT
	%					2.78%	2.31%	0.86%	0.88%			1.81%		
<b>TOTAL MUNICIPAL INTERSTATE</b>	2017	<b>235977</b>	<b>254105</b>	<b>260397</b>	<b>243274</b>	<b>443262</b>	<b>433075</b>	<b>347912</b>	<b>360587</b>	<b>386970</b>	<b>458858</b>	<b>394517</b>		
	2016	<b>230554</b>	<b>242442</b>	<b>256147</b>	<b>240207</b>	<b>435507</b>	<b>420994</b>	<b>338253</b>	<b>349481</b>	<b>370401</b>	<b>449350</b>	<b>383577</b>		
	%	2.35%	4.81%	1.66%	1.28%	1.78%	2.87%	2.86%	3.18%	4.47%	2.12%	2.85%		

NOTE: Numbers in red denote estimated traffic due to road construction, inaccurate, or insufficient data. Monthly data for sites without comparable data are not include in TOTAL.

Site 715-97 was not used for final calculations in 2017 due to construction influenced traffic.

**COMPARISON OF THE MONTHLY AVERAGE DAILY TRAFFIC (MADT) FOR 2017 AND 2016  
AND ANNUAL AVERAGE DAILY TRAFFIC (AADT)**

**MUNICIPAL PRIMARY**

<b>LOCATION AND STATION NUMBER</b>		<b>JAN. MADT</b>	<b>FEB. MADT</b>	<b>MARCH MADT</b>	<b>APRIL MADT</b>	<b>MAY MADT</b>	<b>JUNE MADT</b>	<b>JULY MADT</b>	<b>AUG. MADT</b>	<b>SEPT. MADT</b>	<b>OCT. MADT</b>	<b>NOV. MADT</b>	<b>DEC. MADT</b>	<b>ANNUAL AADT</b>
US 71 WEST OF MEMPHIS AVE SPIRIT LAKE 802-30	2017	9735	9888	10449	11490	12999	13827	14027	12835	11968	10887	10146		<b>11665</b>
	2016	10090	10092	10794	11755	13344	13919	14069	12756	11922	11137	10161	9946	
	%	-3.52%	-2.02%	-3.20%	-2.25%	-2.59%	-0.66%	-0.30%	0.62%	0.39%	-2.24%	-0.15%		
IA 12 ON VIADUCT EAST OF COURT ST SIOUX CITY 803-97	2017	NO DATA	NO DATA	NO DATA	NO DATA	NO DATA	NO DATA	NO DATA	NO DATA	NO DATA	NO DATA	NO DATA	NO DATA	<b>NO AADT</b>
	2016	NO DATA	NO DATA	NO DATA	NO DATA	NO DATA	NO DATA	NO DATA	NO DATA	NO DATA	NO DATA	NO DATA	NO DATA	
	%													
IA 4 NORTH OF 4TH AVE NW POCAHONTAS 804-76	2017	2589	2749	2913	3204	3623	3802	3781	3658	3474	3268	3118		<b>3229</b>
	2016	2749	2719	2983	3161	3484	3626	3517	3553	3708	3422	3075	2755	
	%	-5.82%	1.10%	-2.35%	1.36%	3.99%	4.85%	7.51%	2.96%	-6.31%	-4.50%	1.40%		
IA 148 SOUTH OF 11TH ST CORNING 805-02	2017	2134	2305	2486	2617	2997	3049	3053	2769	2661	2553	2443		<b>2758</b>
	2016	2283	2332	2534	2829	3004	3252	3283	3022	2893	2775	2543	2344	
	%	-6.53%	-1.16%	-1.89%	-7.49%	-0.23%	-6.24%	-7.01%	-8.37%	-8.02%	-8.00%	-3.93%		
US 6/HICKMAN RD EAST OF SHASTA PLACE WINDSOR HEIGHTS 806-77	2017	17013	18453	18490	19388	19418	NO DATA	NO DATA	NO DATA	18626	18560	17956		<b>18621</b>
	2016	17156	17752	18148	19330	19674	19555	18739	18980	18748	18911	18423	18037	
	%	-0.83%	3.95%	1.88%	0.30%	-1.30%				-0.65%	-1.86%	-2.53%		
US 71 SOUTH OF BIRCH ST AUDUBON 808-05	2017	NO DATA	NO DATA	NO DATA	NO DATA	NO DATA	NO DATA	NO DATA	4455	4434	4486	4391		<b>NO AADT</b>
	2016	3922	4061	4544	4557	NO DATA	NO DATA	NO DATA	NO DATA	NO DATA	NO DATA	NO DATA	NO DATA	
	%													
IA 14 NORTH OF WOODLAND ST MARSHALLTOWN 809-64	2017	NO DATA	NO DATA	NO DATA	NO DATA	5923	6007	5915	5890	5996	5671	5473		<b>NO AADT</b>
	2016	4984	5170	5568	5868	6121	6223	5938	6105	6330	6107	5958	NO DATA	
	%					-3.23%	-3.47%	-0.39%	-3.52%	-5.28%	-7.14%	-8.14%		
IA 92 WEST OF 'N' ST INDIANOLA 810-91	2017	NO DATA	NO DATA	NO DATA	NO DATA	NO DATA	NO DATA	NO DATA	NO DATA	12156	11632	11077		<b>NO AADT</b>
	2016	NO DATA	NO DATA	NO DATA	NO DATA	NO DATA	NO DATA	NO DATA	NO DATA	NO DATA	NO DATA	NO DATA	NO DATA	
	%													
IA 122 WEST OF VIRGINIA AVE MASON CITY 812-17	2017	9402	10117	10183	11146	11027	10453	9915	10315	10470	10203	9935		<b>10542</b>
	2016	9692	9970	10245	11070	11065	10691	10256	10316	11446	11265	10632	9854	
	%	-2.99%	1.47%	-0.61%	0.69%	-0.34%	-2.23%	-3.32%	-0.01%	-8.53%	-9.43%	-6.56%		

**COMPARISON OF THE MONTHLY AVERAGE DAILY TRAFFIC (MADT) FOR 2017 AND 2016  
AND ANNUAL AVERAGE DAILY TRAFFIC (AADT)**

**MUNICIPAL PRIMARY**

LOCATION AND STATION NUMBER		JAN. MADT	FEB. MADT	MARCH MADT	APRIL MADT	MAY MADT	JUNE MADT	JULY MADT	AUG. MADT	SEPT. MADT	OCT. MADT	NOV. MADT	DEC. MADT	ANNUAL AADT
US 6 EAST OF PINE ST DAVENPORT 813-82	2017	18790	20182	20120	19504	NO DATA	NO DATA	NO DATA	NO DATA	NO DATA	NO DATA	NO DATA		
	2016	18542	19988	20126	20590	20960	20809	20070	20590	20392	20591	20761	20452	20323
	%	1.34%	0.97%	-0.03%	-5.27%									
IA 922 NORTH OF WILEY BLVD CEDAR RAPIDS 815-57	2017	10341	10975	11189	11766	12290	12717	11908	12020	11630	11905	11560		
	2016	9776	10124	10930	11715	11982	12074	11536	11570	11592	11988	11684	11293	11355
	%	5.78%	8.41%	2.37%	0.44%	2.57%	5.33%	3.22%	3.89%	0.33%	-0.69%	-1.06%		
US 34 WEST OF US 61 WEST BURLINGTON 816-29	2017	NO DATA	NO DATA	NO DATA	NO DATA	NO DATA	NO DATA	NO DATA	15193	15195	15280	14716		
	2016	NO DATA	NO DATA	NO DATA	NO DATA	NO DATA	NO DATA	NO DATA	NO DATA	NO DATA	NO DATA	NO DATA	NO DATA	NO AADT
	%													
IA 9 EAST OF 14TH ST OSAGE 819-66	2017	4113	4296	4605	5182	5611	5488	5425	5426	NO DATA	5012	4745		
	2016	4163	4278	4634	5220	5542	5470	5240	5298	5188	5259	4627	4429	4946
	%	-1.20%	0.42%	-0.63%	-0.73%	1.25%	0.33%	3.53%	2.42%		-4.70%	2.55%		
IA 17 NORTH OF NW 11TH ST EAGLE GROVE 820-99	2017	2534	2594	2679	2909	3092	3194	3054	2987	2946	2967	2907		
	2016	2618	2564	2785	2913	3025	3036	3072	3005	2904	3008	2828	2685	2870
	%	-3.21%	1.17%	-3.81%	-0.14%	2.21%	5.20%	-0.59%	-0.60%	1.45%	-1.36%	2.79%		
IA 4 SOUTH OF EDGEWOOD AVE EAST JEFFERSON 821-37	2017	3329	3693	3904	4273	4549	4600	4219	4365	4529	4325	4050		
	2016	3496	3572	4047	4422	4685	4677	4229	4397	4486	4419	3967	3645	4170
	%	-4.78%	3.39%	-3.53%	-3.37%	-2.90%	-1.65%	-0.24%	-0.73%	0.96%	-2.13%	2.09%		
US 6 EAST OF SYCAMORE ST IOWA CITY 823-52	2017	18459	19661	20060	21274	21559	21889	21200	22496	22306	22143	20751		
	2016	18473	19552	19841	20951	21307	20947	20256	19746	20177	20916	19816	18851	20069
	%	-0.08%	0.56%	1.10%	1.54%	1.18%	4.50%	4.66%	13.93%	10.55%	5.87%	4.72%		
US 69 NORTH OF 15TH ST AMES 824-85	2017	15540	16796	16597	17893	17537	17350	16787	17279	17517	17643	17012		
	2016	15825	16452	16891	18026	NO DATA	18022	NO DATA	NO DATA	NO DATA	NO DATA	17184	17285	NO AADT
	%	-1.80%	2.09%	-1.74%	-0.74%		-3.73%					-1.00%		
US 65 1.5 MI NORTH OF I-80 BONDURANT 826-77	2017	12475	13685	14047	14985	15941	15937	15470	16549	14909	15023	14727		
	2016	12317	13000	13996	14904	15469	15454	15068	16293	14775	14891	14302	13332	14483
	%	1.28%	5.27%	0.36%	0.54%	3.05%	3.13%	2.67%	1.57%	0.91%	0.89%	2.97%		
US 61/151 @ MISSISSIPPI RIVER BRIDGE DUBUQUE 827-31	2017	18559	20453	21577	22805	23926	25241	25041	24721	23942	23579	22161		
	2016	18725	19703	21333	22182	23624	24677	24951	24359	23542	23503	22039	19496	22344
	%	-0.89%	3.81%	1.14%	2.81%	1.28%	2.29%	0.36%	1.49%	1.70%	0.32%	0.55%		



**COMPARISON OF THE MONTHLY AVERAGE DAILY TRAFFIC (MADT) FOR 2017 AND 2016  
AND ANNUAL AVERAGE DAILY TRAFFIC (AADT)**

**MUNICIPAL PRIMARY**

LOCATION AND STATION NUMBER		JAN. MADT	FEB. MADT	MARCH MADT	APRIL MADT	MAY MADT	JUNE MADT	JULY MADT	AUG. MADT	SEPT. MADT	OCT. MADT	NOV. MADT	DEC. MADT	ANNUAL AADT
IA 150 SOUTH OF 12TH ST OELWEIN 828-33	2017	5265	5651	5791	6387	6723	6787	6391	6474	6608	6387	6016		<b>6167</b>
	2016	5372	5576	5946	6305	6744	6910	6356	6434	6304	6428	5959	5676	
	%	-1.99%	1.35%	-2.61%	1.30%	-0.31%	-1.78%	0.55%	0.62%	4.82%	-0.64%	0.96%		
IA 23 1.0 MI SOUTH OF IA 92 OSKALOOSA 830-62	2017	2359	2566	2625	2778	2775	2814	2728	2751	2754	2747	2540		<b>NO AADT</b>
	2016	2549	2610	2805	2856	2870	2879	NO DATA	2878	2931	2904	2728	2512	
	%	-7.45%	-1.69%	-6.42%	-2.73%	-3.31%	-2.26%		-4.41%	-6.04%	-5.41%	-6.89%		
IA 5 WEST OF FLEUR DRIVE DES MOINES 831-92	2017	24783	26467	27110	29436	30303	31370	30055	32033	29934	30219	29145		<b>NO AADT</b>
	2016	NO DATA	24894	26486	28094	29102	29535	28675	30007	28366	29395	27853	26564	
	%		6.32%	2.36%	4.78%	4.13%	6.21%	4.81%	6.75%	5.53%	2.80%	4.64%		
US 65 2.1 MI NORTH OF IA 163 PLEASANT HILL 250-77	2017	<b>PREVIOUSLY GROUPED IN RURAL PRIMARY</b>				31465	32570	31522	34510	30976	30916	30135		<b>28598</b>
	2016	<b>PREVIOUSLY GROUPED IN RURAL PRIMARY</b>				30001	31147	29740	32900	29583	29802	28631	26602	
	%					4.88%	4.57%	5.99%	4.89%	4.71%	3.74%	5.25%		
IA 141 0.5 MI NORTH OF IA 44 GRIMES 278-77	2017	<b>PREVIOUSLY GROUPED IN RURAL PRIMARY</b>				28250	28130	27128	27912	27735	26426	25384		<b>NO AADT</b>
	2016	<b>PREVIOUSLY GROUPED IN RURAL PRIMARY</b>				NO DATA	NO DATA	NO DATA	NO DATA	NO DATA	NO DATA	NO DATA	23184	
	%													
<b>TOTAL MUNICIPAL PRIMARY</b>	<b>2017</b>	<b>152637</b>	<b>190531</b>	<b>194825</b>	<b>207037</b>	<b>214221</b>	<b>217095</b>	<b>190976</b>	<b>177303</b>	<b>181423</b>	<b>206365</b>	<b>214820</b>		
	<b>2016</b>	<b>153826</b>	<b>185178</b>	<b>194524</b>	<b>206323</b>	<b>211043</b>	<b>212539</b>	<b>186186</b>	<b>172893</b>	<b>179530</b>	<b>206130</b>	<b>212410</b>		
	<b>%</b>	<b>-0.77%</b>	<b>2.89%</b>	<b>0.15%</b>	<b>0.35%</b>	<b>1.51%</b>	<b>2.14%</b>	<b>2.57%</b>	<b>2.55%</b>	<b>1.05%</b>	<b>0.11%</b>	<b>1.13%</b>		

NOTE: Numbers in red denote estimated traffic due to road construction, inaccurate, or insufficient data. Monthly data for sites without comparable data are not include in TOTAL.

**COMPARISON OF THE MONTHLY AVERAGE DAILY TRAFFIC (MADT) FOR 2017 AND 2016  
AND ANNUAL AVERAGE DAILY TRAFFIC (AADT)**

**MUNICIPAL STREET**

<b>LOCATION AND STATION NUMBER</b>		<b>JAN. MADT</b>	<b>FEB. MADT</b>	<b>MARCH MADT</b>	<b>APRIL MADT</b>	<b>MAY MADT</b>	<b>JUNE MADT</b>	<b>JULY MADT</b>	<b>AUG. MADT</b>	<b>SEPT. MADT</b>	<b>OCT. MADT</b>	<b>NOV. MADT</b>	<b>DEC. MADT</b>	<b>ANNUAL AADT</b>
LAKE ST NORTH OF 3RD ST	2017	2109	2310	2441	2586	2848	2878	2939	2708	2707	2596	2436		
STORM LAKE	2016	2222	2340	2545	2661	2932	2919	3100	2885	2786	2744	2517	2288	<b>2662</b>
900-11	%	-5.09%	-1.28%	-4.09%	-2.82%	-2.86%	-1.40%	-5.19%	-6.14%	-2.84%	-5.39%	-3.22%		
2ND AVE N EAST OF 15TH ST	2017	<b>NO DATA</b>	<b>NO DATA</b>	<b>NO DATA</b>	<b>NO DATA</b>	<b>NO DATA</b>	<b>NO DATA</b>	6170	6240	6244	6189	6029		
FORT DODGE	2016	5349	5545	5744	<b>NO DATA</b>	<b>NO DATA</b>	<b>NO DATA</b>	<b>NO DATA</b>	<b>NO DATA</b>	<b>NO DATA</b>	<b>NO DATA</b>	<b>NO DATA</b>	<b>NO DATA</b>	<b>NO AADT</b>
901-94	%													
LOCUST ST EAST OF SPRING ST	2017	18096	19634	19666	20603	19472	20056	18913	20220	20188	20091	19037		
DAVENPORT	2016	18338	19707	19876	19978	19264	19372	18822	19826	19824	19823	19196	17956	<b>19332</b>
902-82	%	-1.32%	-0.37%	-1.06%	3.13%	1.08%	3.53%	0.48%	1.99%	1.84%	1.35%	-0.83%		
JEFFERSON ST NORTHEAST OF E 5TH ST	2017	4970	5309	5256	<b>NO DATA</b>	<b>NO DATA</b>	<b>NO DATA</b>	<b>NO DATA</b>	<b>NO DATA</b>	<b>NO DATA</b>	5289	<b>NO DATA</b>		
OTTUMWA	2016	5115	5315	5605	<b>NO DATA</b>	<b>NO DATA</b>	<b>NO DATA</b>	<b>NO DATA</b>	5383	5610	5613	5877	4822	<b>NO AADT</b>
903-90	%	-2.83%	-0.11%	-6.23%							-5.77%			
JOHNSON AVE WEST OF JANICE DR	2017	7799	8339	8417	8747	8727	8368	8130	8228	8162	<b>NO DATA</b>	<b>NO DATA</b>		
CEDAR RAPIDS	2016	8075	<b>NO DATA</b>	<b>NO DATA</b>	<b>NO DATA</b>	<b>NO DATA</b>	<b>NO DATA</b>	<b>NO DATA</b>	9071	8554	9199	8774	8188	<b>NO AADT</b>
904-57	%	-3.42%							-9.29%	-4.58%				
NORTHWESTERN AVE NORTH OF 20TH ST	2017	1908	2116	2058	2309	2332	2083	1990	2080	2267	2228	2150		
AMES	2016	1949	2010	2073	2317	<b>NO DATA</b>	<b>NO DATA</b>	2140	2179	<b>NO DATA</b>	2180	2088	2002	<b>NO AADT</b>
905-85	%	-2.10%	5.27%	-0.72%	-0.35%			-7.01%	-4.54%		2.20%	2.97%		
DUBUQUE ST SOUTH OF DAVENPORT	2017	<b>NO DATA</b>	<b>NO DATA</b>	<b>NO DATA</b>	<b>NO DATA</b>	<b>NO DATA</b>	<b>NO DATA</b>	<b>NO DATA</b>	<b>NO DATA</b>	<b>NO DATA</b>	<b>NO DATA</b>	<b>NO DATA</b>	<b>NO DATA</b>	<b>NO AADT</b>
IOWA CITY	2016	11879	13599	13528	14618	13903	12867	<b>NO DATA</b>	<b>NO DATA</b>	<b>NO DATA</b>	<b>NO DATA</b>	<b>NO DATA</b>	<b>NO DATA</b>	<b>NO AADT</b>
906-52	%													
COLLEGE ST SOUTH OF 23RD ST	2017	7436	8368	7260	8902	6577	5730	4998	7308	8245	8722	7574		
CEDAR FALLS	2016	7344	8161	7278	8721	6155	5616	5300	7223	8108	8505	7198	6514	<b>7177</b>
907-07	%	1.25%	2.54%	-0.25%	2.08%	6.86%	2.03%	-5.70%	1.18%	1.69%	2.55%	5.22%		
LINDENWOOD ST SOUTH OF 35TH ST	2017	753	806	878	921	994	978	927	863	830	858	853		
SIOUX CITY	2016	750	719	827	920	999	1038	983	978	939	964	887	843	<b>904</b>
908-97	%	0.40%	12.10%	6.17%	0.11%	-0.50%	-5.78%	-5.70%	-11.76%	-11.61%	-11.00%	-3.83%		
HAMILTON BLVD NORTH OF CLIFTON AVE	2017	13378	14336	14962	15776	16877	16119	15539	15883	16159	15925	15485		
SIOUX CITY	2016	13499	13550	14718	15504	16536	16250	15701	16102	16060	15995	15169	14378	<b>15289</b>
909-97	%	-0.90%	5.80%	1.66%	1.75%	2.06%	-0.81%	-1.03%	-1.36%	0.62%	-0.44%	2.08%		

**COMPARISON OF THE MONTHLY AVERAGE DAILY TRAFFIC (MADT) FOR 2017 AND 2016  
AND ANNUAL AVERAGE DAILY TRAFFIC (AADT)**

**MUNICIPAL STREET**

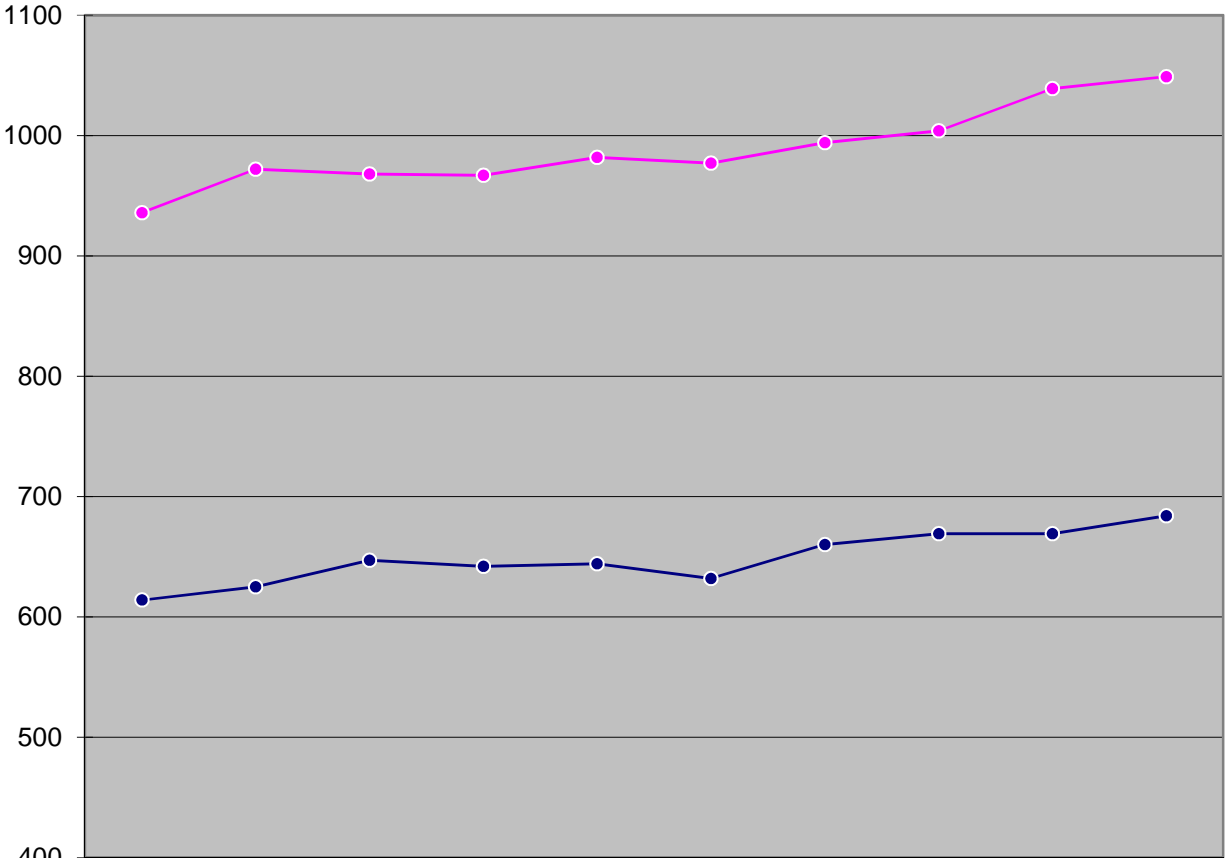
<b>LOCATION AND STATION NUMBER</b>		<b>JAN. MADT</b>	<b>FEB. MADT</b>	<b>MARCH MADT</b>	<b>APRIL MADT</b>	<b>MAY MADT</b>	<b>JUNE MADT</b>	<b>JULY MADT</b>	<b>AUG. MADT</b>	<b>SEPT. MADT</b>	<b>OCT. MADT</b>	<b>NOV. MADT</b>	<b>DEC. MADT</b>	<b>ANNUAL AADT</b>
GRANDVIEW AVE SOUTH OF PLYMOUTH CT	2017	7391	8021	8082	8935	9278	9359	8922	8775	8803	8657	8116		
DUBUQUE	2016	7527	7837	8250	8952	9231	NO DATA	8546	NO DATA	8910	8895	8294	7971	NO AADT
910-31	%	-1.81%	2.35%	-2.04%	-0.19%	0.51%		4.40%		-1.20%	-2.68%	-2.15%		
HUMBOLDT AVE SOUTH OF 4TH ST	2017	524	573	580	637	730	725	736	701	706	805	746		
BODE	2016	528	532	609	706	731	734	693	679	697	766	660	580	660
911-46	%	-0.76%	7.71%	-4.76%	-9.77%	-0.14%	-1.23%	6.20%	3.24%	1.29%	5.09%	13.03%		
ELM ST NORTH OF LUCAS ST	2017	2965	3212	3301	3418	3557	3612	3403	3387	3475	3263	3132		
CRESTON	2016	3136	3294	3513	3668	3714	3702	3508	3462	3457	3319	3172	3337	3440
912-88	%	-5.45%	-2.49%	-6.03%	-6.82%	-4.23%	-2.43%	-2.99%	-2.17%	0.52%	-1.69%	-1.26%		
N 16TH ST SOUTH OF AVE "N"	2017	9112	10019	10376	10962	11618	11614	11115	11416	11272	11145	11019		
COUNCIL BLUFFS	2016	8846	9499	10065	10108	10654	10851	10326	10709	10754	10770	10240	10005	10236
914-78		3.01%	5.47%	3.09%	8.45%	9.05%	7.03%	7.64%	6.60%	4.82%	3.48%	7.61%		
<b>TOTAL MUNICIPAL STREET</b>	<b>2017</b>	<b>76441</b>	<b>74704</b>	<b>74860</b>	<b>75049</b>	<b>71951</b>	<b>61712</b>	<b>69482</b>	<b>72794</b>	<b>80547</b>	<b>79579</b>	<b>70548</b>		
	<b>2016</b>	<b>77329</b>	<b>72964</b>	<b>75359</b>	<b>73535</b>	<b>70216</b>	<b>60482</b>	<b>69119</b>	<b>73114</b>	<b>80089</b>	<b>79574</b>	<b>69421</b>		
	<b>%</b>	<b>-1.15%</b>	<b>2.38%</b>	<b>-0.66%</b>	<b>2.06%</b>	<b>2.47%</b>	<b>2.03%</b>	<b>0.53%</b>	<b>-0.44%</b>	<b>0.57%</b>	<b>0.01%</b>	<b>1.62%</b>		

NOTE: Numbers in red denote estimated traffic due to road construction, inaccurate, or insufficient data. Monthly data for sites without comparable data are not include in TOTAL.

NOTE: Site 914-78 was Site 811-78 on IA 192 until IA 192 was removed from N.16th Street in 2016.

### NOVEMBER HISTORICAL VMT

VEHICLE MILES OF TRAVEL  
(in 1,000,000's)

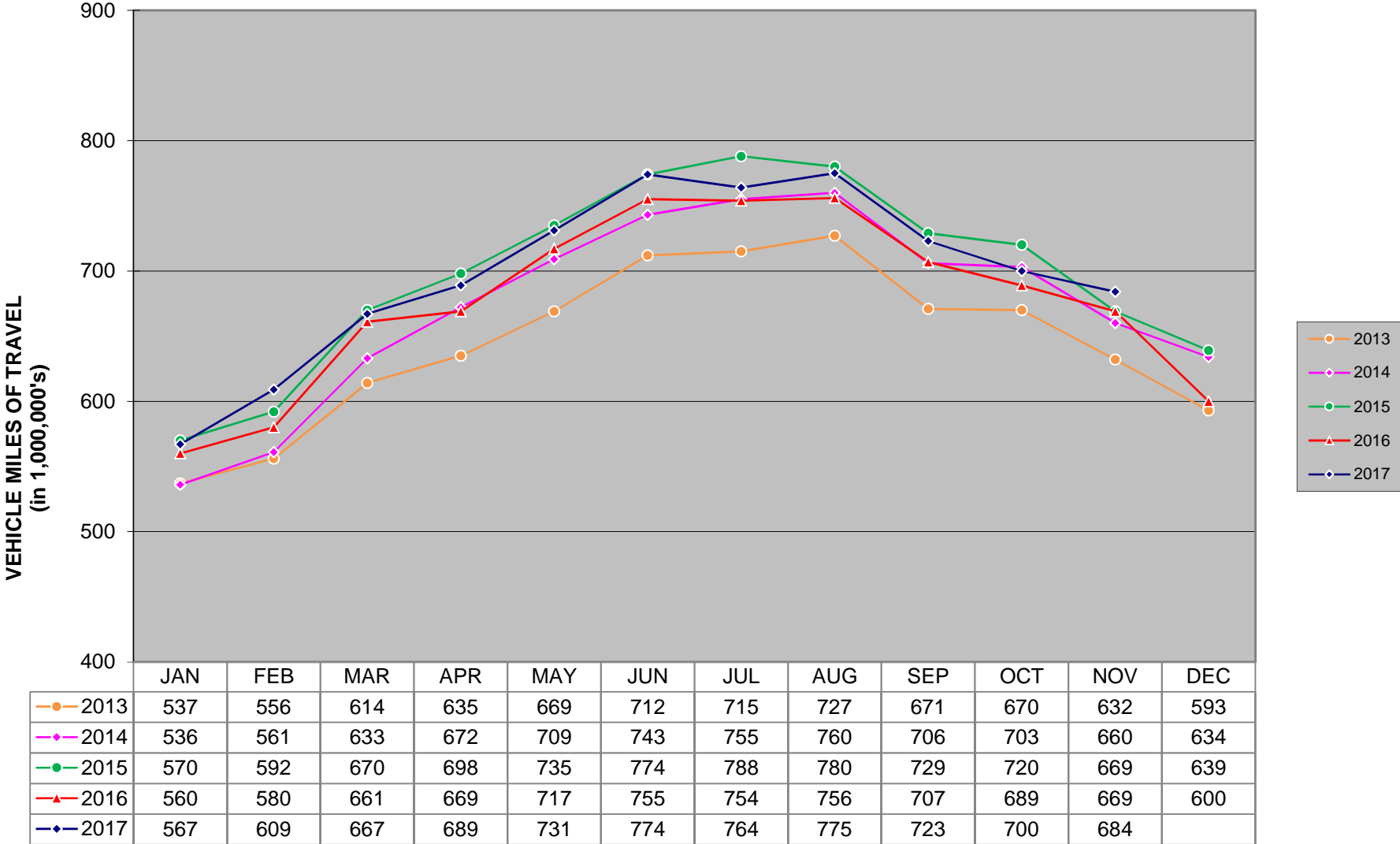


- TOTAL PRIMARY
- TOTAL INTERSTATE

<span style="color: magenta;">—●—</span> TOTAL PRIMARY	936	972	968	967	982	977	994	1004	1039	1049
<span style="color: blue;">—●—</span> TOTAL INTERSTATE	614	625	647	642	644	632	660	669	669	684

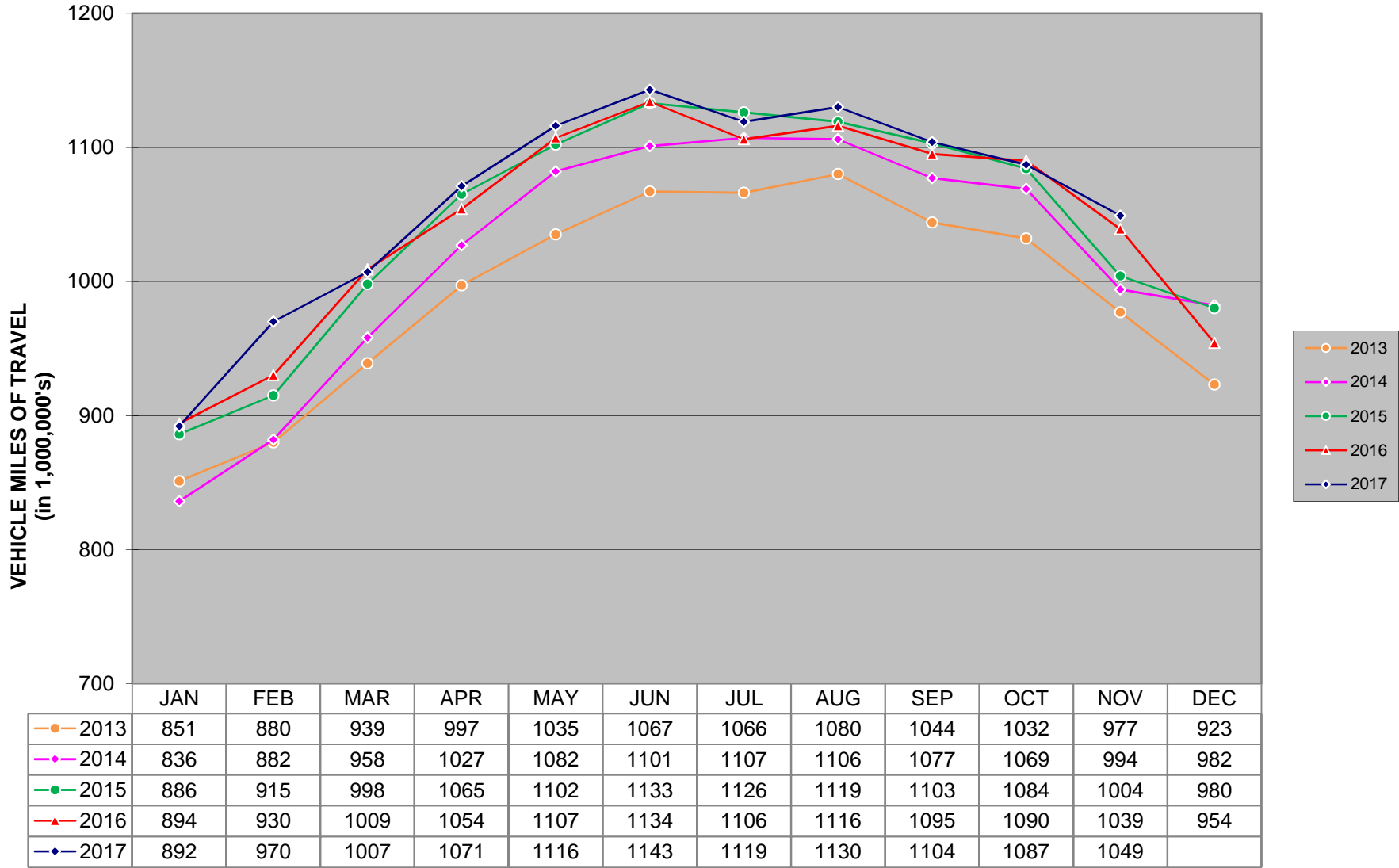
YEAR

### MONTHLY INTERSTATE VMT



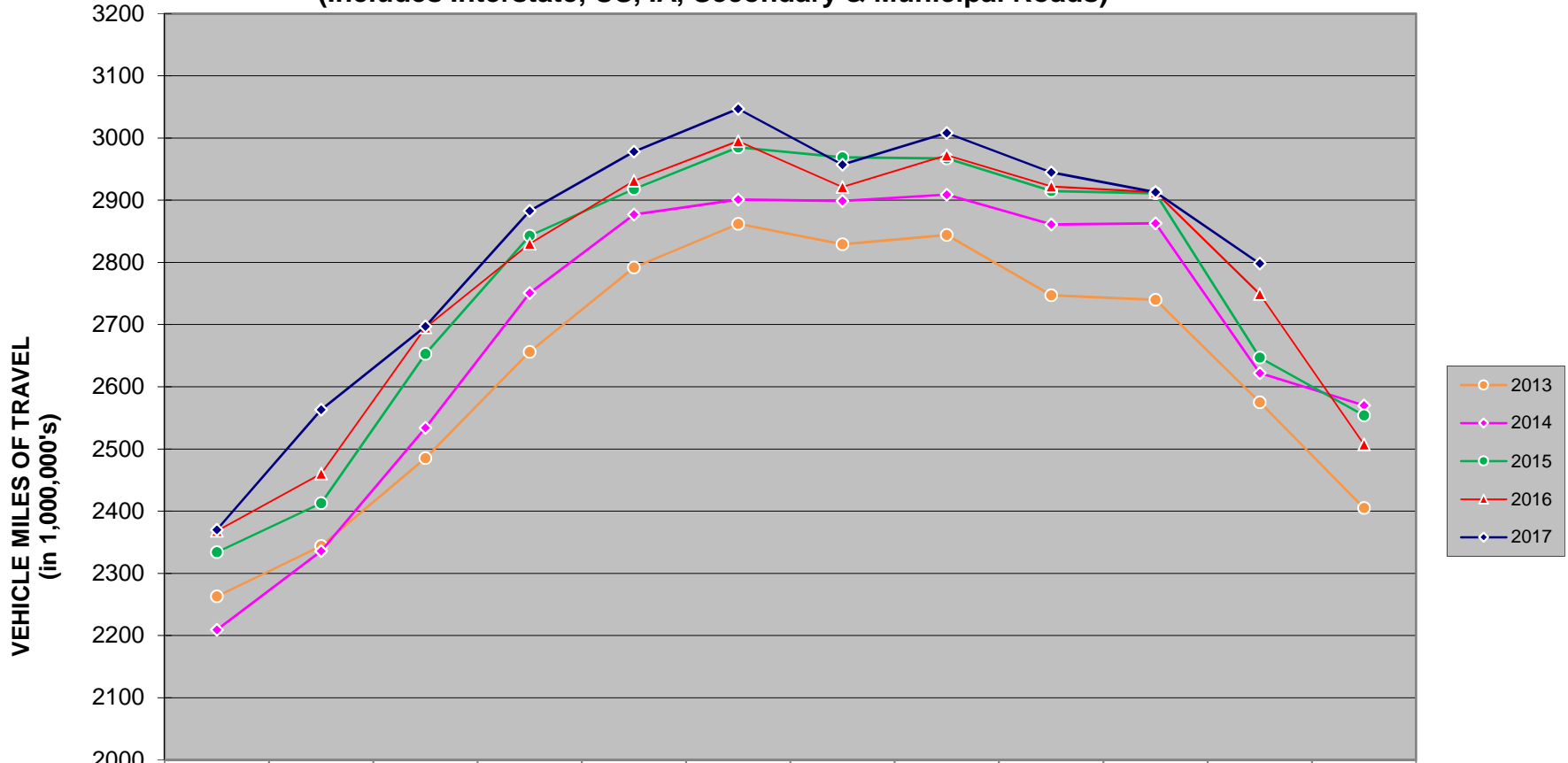
**There are 1,136 miles of Interstate in Iowa as of December 31, 2016.**

### MONTHLY US & IA ROUTE VMT



There are 8,438 miles of US and IA routes in Iowa as of December 31, 2016 .

**MONTHLY TOTAL STATE VMT**  
 (Includes Interstate, US, IA, Secondary & Municipal Roads)



	JAN	FEB	MAR	APR	MAY	JUN	JUL	AUG	SEP	OCT	NOV	DEC
—○— 2013	2263	2344	2485	2656	2792	2862	2829	2844	2747	2740	2575	2405
—◇— 2014	2209	2336	2534	2751	2877	2901	2899	2909	2861	2863	2622	2570
—●— 2015	2334	2413	2653	2843	2918	2985	2969	2967	2915	2911	2647	2554
—▲— 2016	2368	2460	2695	2830	2931	2995	2921	2972	2922	2913	2749	2507
—◇— 2017	2370	2563	2697	2883	2978	3047	2957	3008	2945	2913	2798	