

# U.S. 75 IN HINTON PROJECT

## PROJECT OVERVIEW & BACKGROUND

The Iowa DOT proposes to reconstruct U.S. 75 through Hinton and its connections to the community.



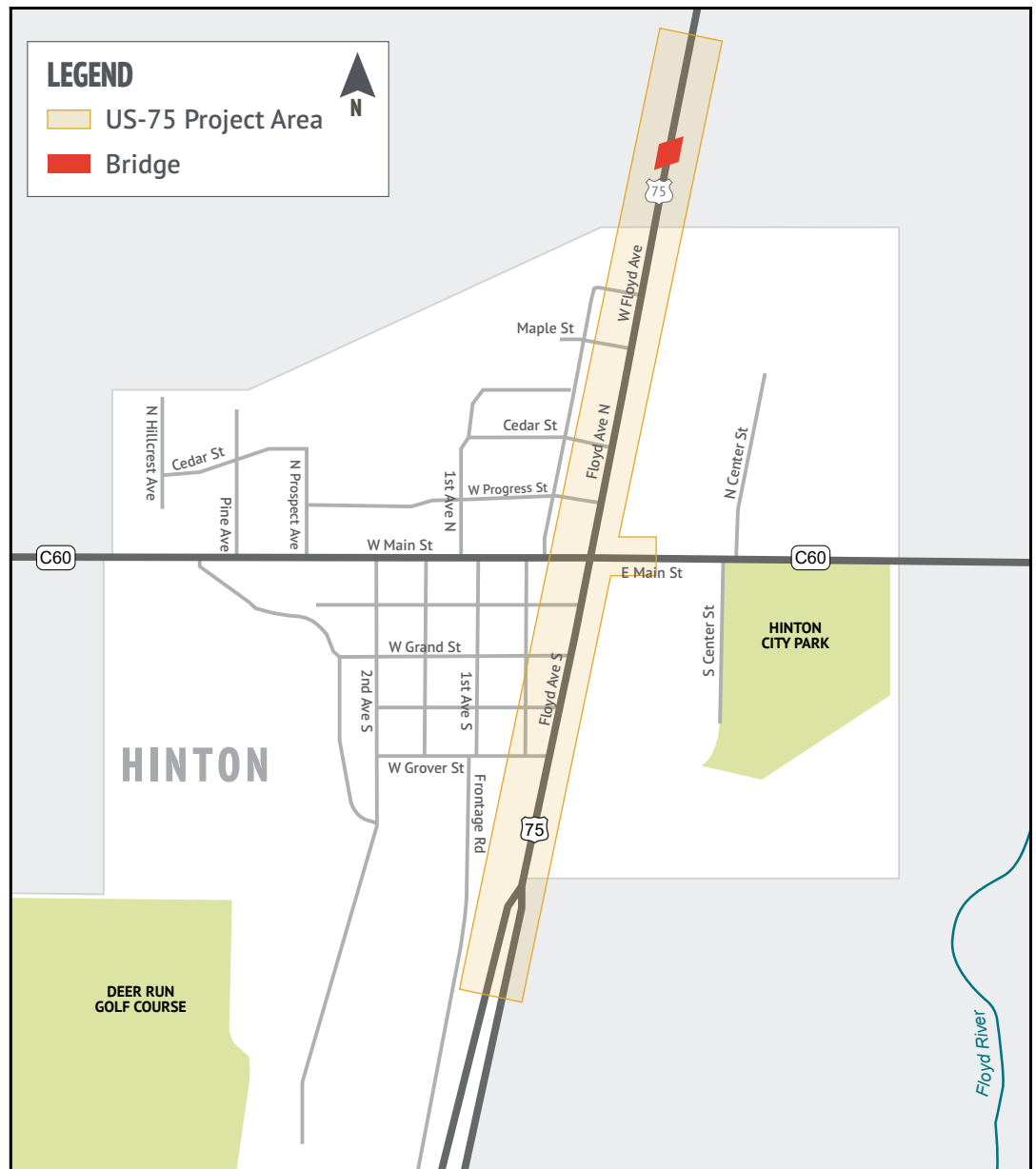
## PURPOSE & NEED

### Project Purpose

The purpose of the proposed action is to provide a U.S. 75 connection between four-lane divided highway segments north and south of Hinton, which minimizes delay for the safe and efficient transportation of people, goods, and services both locally and regionally.

### Project Need

- Improve roadway and bridge deficiencies.
- Improve all traffic operations.
- Improve traffic safety.
- Protect and enhance freight movement along the highway and railroad modes.

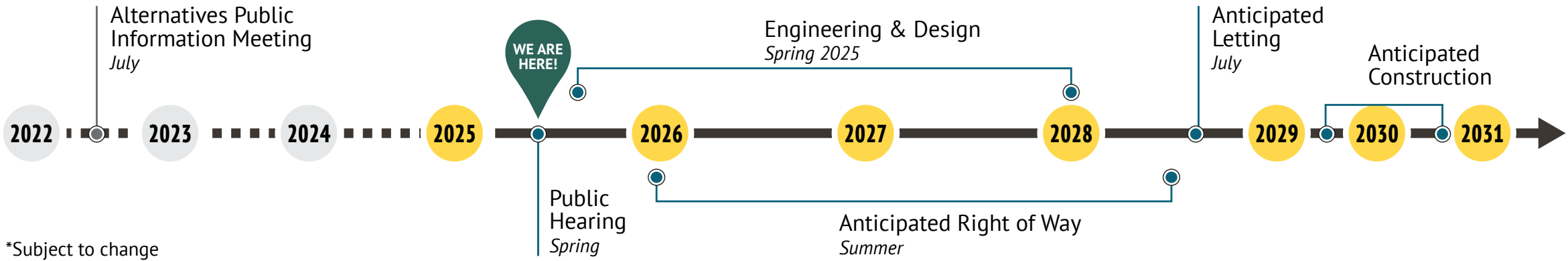




PROPOSED ALTERNATIVE



PROJECT SCHEDULE & NEXT STEPS





## SCOPE OF WORK

U.S. 75 will be expanded to the west by approximately 32 feet towards the Hinton Business Corner Historic District. Proposed Alternative Improvements Include:



### Roadway Improvements

- Reconstruct two northbound and two southbound lanes, separated by a raised median.
- Construct a raised median on U.S. 75 to enhance safety and traffic flow by reducing access points.
- Construct left- and northbound right-turn lanes at C60/Main Street, in addition to left-turn lanes at Grover Street and Maple Street. Turn lanes will accommodate vehicles during train crossings.



### Bridge Reconstruction

Reconstruct a new bridge over the “Lateral A” waterway north of Maple Street to match U.S. 75 reconstruction to the north.



### Pedestrian Accommodations

Portions of the sidewalk along the west side of U.S. 75 have already been reconstructed due to deterioration. This project will finish the reconstruction to a 5-foot-wide sidewalk from Grover Street to north of Maple Street, complying with ADA and Public Right-of-Way Accessibility Guidelines.



### Traffic and Railroad Signals

- Reconstruction of the traffic signal at the C60/Main St intersection.
- Working with railroad industry partners on signalization and preemptions systems to clear vehicles from the at-grade rail crossings during train events.



## FEEDBACK



Comments will be collected through July 31, and should be submitted to:

**Sarah Tracy, P.E.**

*Transportation Planner*

Iowa DOT, District 3 Office  
6409 Gordon Drive  
Sioux City, IA 51106

Sarah.Tracy@iowadot.us

712-276-1451



[bit.ly/iowadotreg6668](https://bit.ly/iowadotreg6668)

Comment forms are available and can also be returned at the welcome table.