

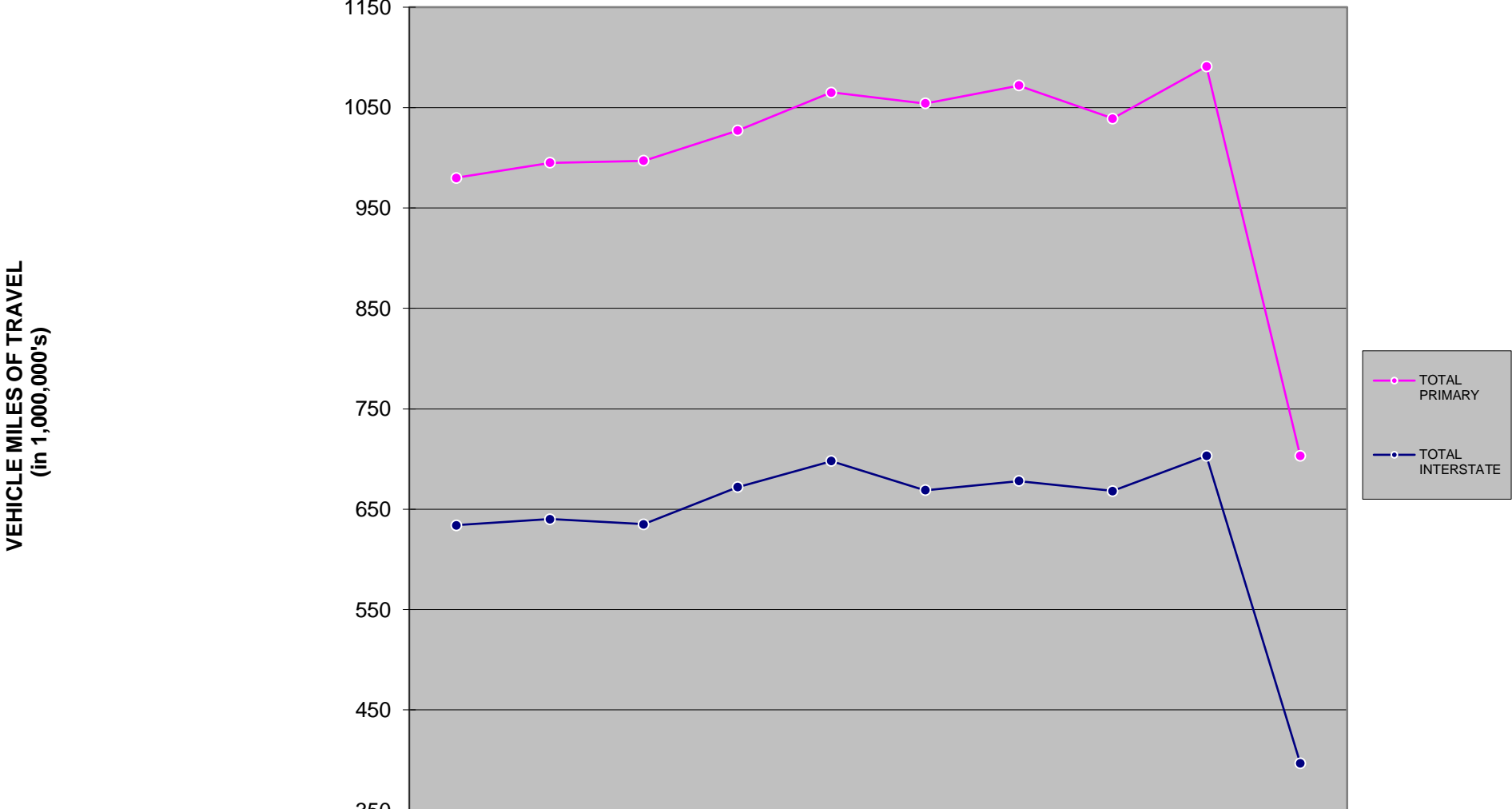
# TRAFFIC VOLUME VARIATIONS ON THE IOWA ROAD SYSTEM \*

<u>APRIL</u> 2020	COMPARED TO	<u>APRIL</u> 2019	<u>YEAR</u> <u>TO DATE</u> 2020 / 2019
<b><u>RURAL</u></b>			
INTERSTATE		-43.6%	-15.1%
PRIMARY		-35.5%	-10.9%
SECONDARY		-21.1%	-3.9%
<b>SUBTOTAL</b>		<b>-33.7%</b>	<b>-10.1%</b>
<b><u>MUNICIPAL</u></b>			
INTERSTATE		-43.4%	-14.4%
PRIMARY		-35.7%	-12.1%
STREETS		-37.1%	-13.8%
<b>SUBTOTAL</b>		<b>-38.0%</b>	<b>-13.5%</b>
<b>STATE TOTAL</b>		<b>-35.4%</b>	<b>-11.5%</b>

Data collected at the 171 continuous automatic traffic recorder locations shown on the following pages were utilized to compute the above percentages. The rural, municipal and state totals were weighted based on estimated vehicle miles of travel.

\* The COVID-19 Pandemic may have impacts on Vehicle Miles Traveled not currently accounted for in this month's report methodology. Therefore these estimated monthly VMT numbers reported will be evaluated further once additional data (such as fuel usage, third-party origin and destination statistics) is gathered.

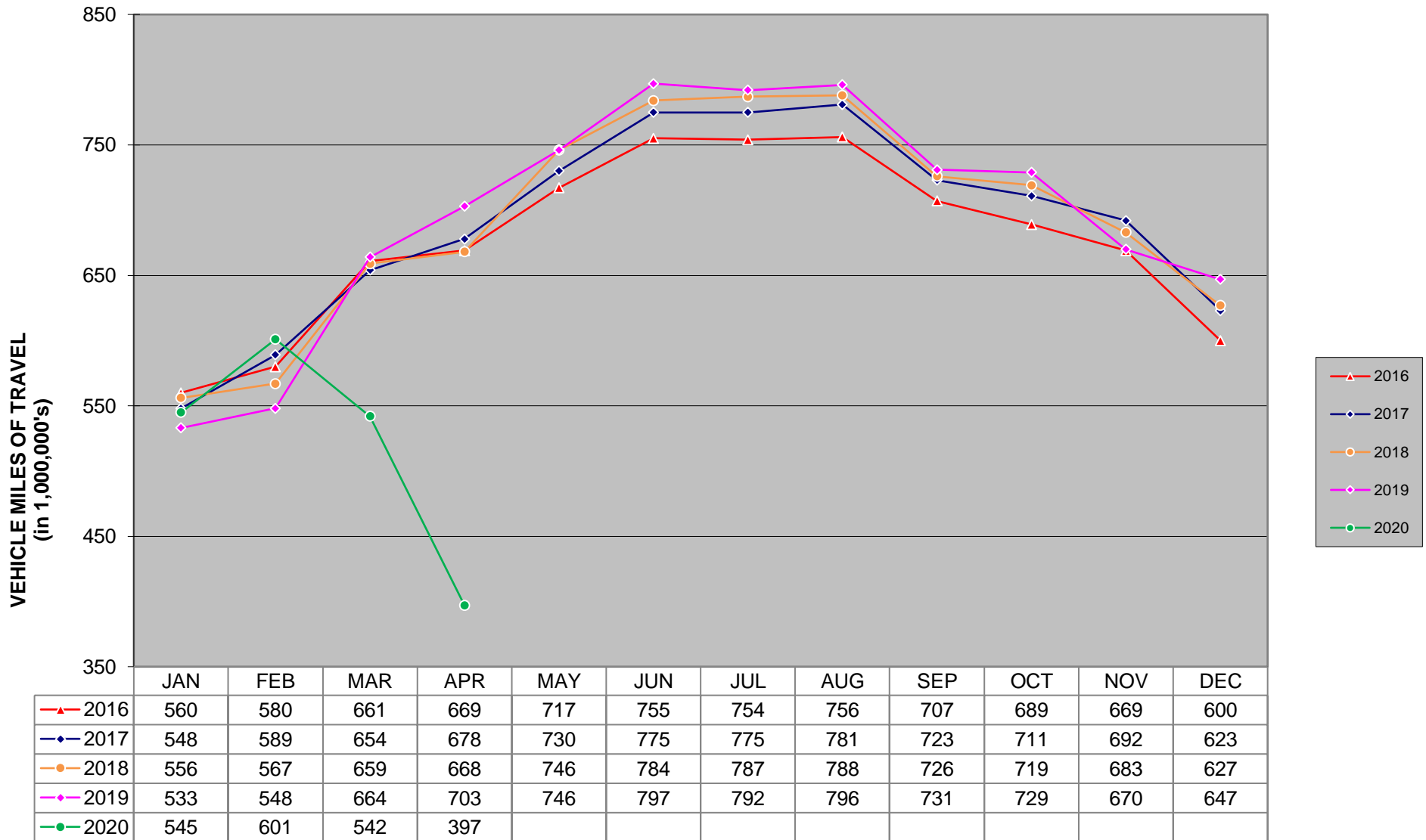
### APRIL HISTORICAL VMT \*



	APR 2011	APR 2012	APR 2013	APR 2014	APR 2015	APR 2016	APR 2017	APR 2018	APR 2019	APR 2020
—●— TOTAL PRIMARY	980	995	997	1027	1065	1054	1072	1039	1091	703
—●— TOTAL INTERSTATE	634	640	635	672	698	669	678	668	703	397

\* The COVID-19 Pandemic may have impacts on Vehicle Miles Traveled not currently accounted for in this month's report methodology. Therefore these estimated monthly VMT numbers reported will be evaluated further once additional data (such as fuel usage, third-party origin and destination statistics) is gathered.

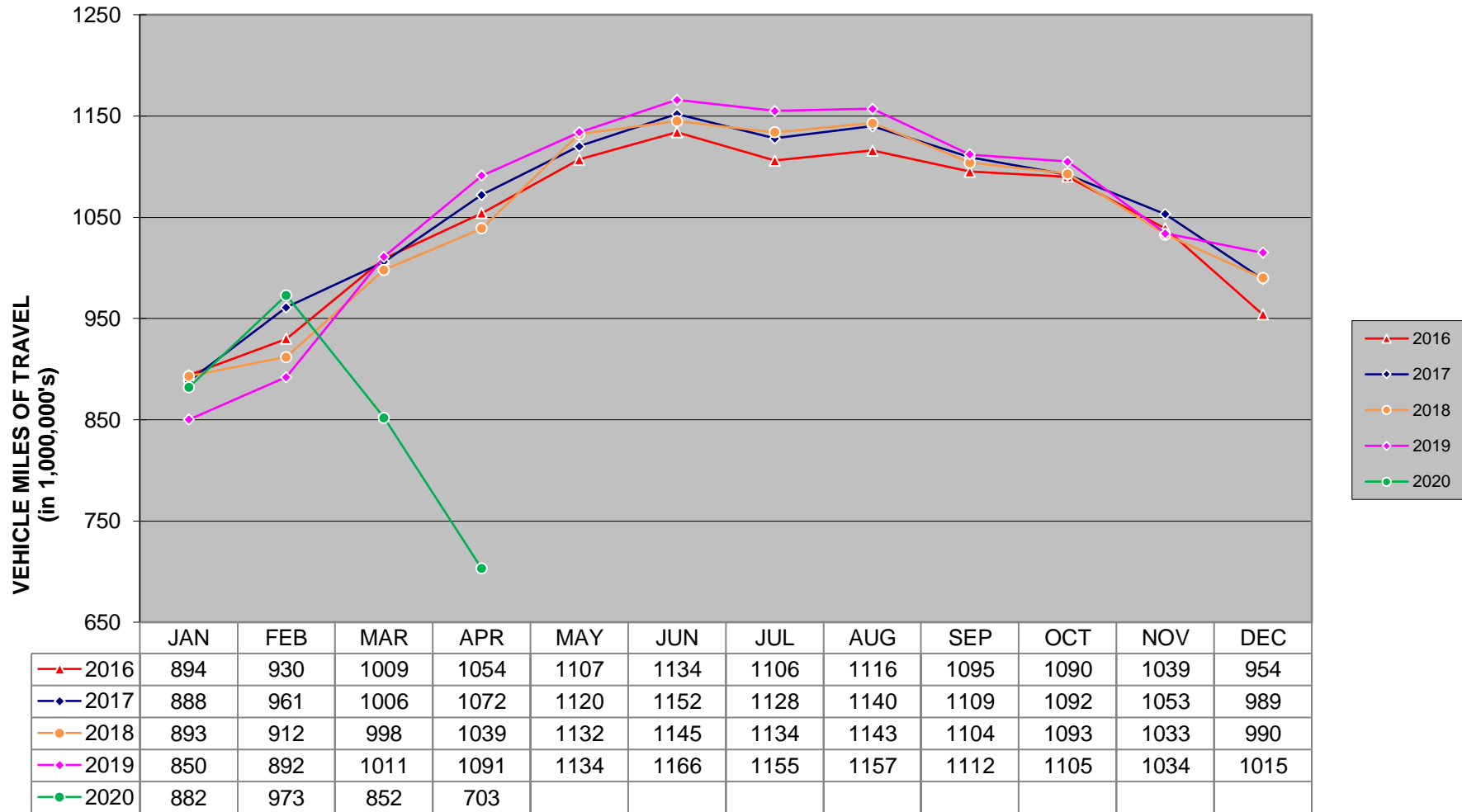
## MONTHLY INTERSTATE VMT \*



**There are 1,144 miles of Interstate in Iowa as of December 31, 2018.**

\* The COVID-19 Pandemic may have impacts on Vehicle Miles Traveled not currently accounted for in this month's report methodology. Therefore these estimated monthly VMT numbers reported will be evaluated further once additional data (such as fuel usage, third-party origin and destination statistics) is gathered.

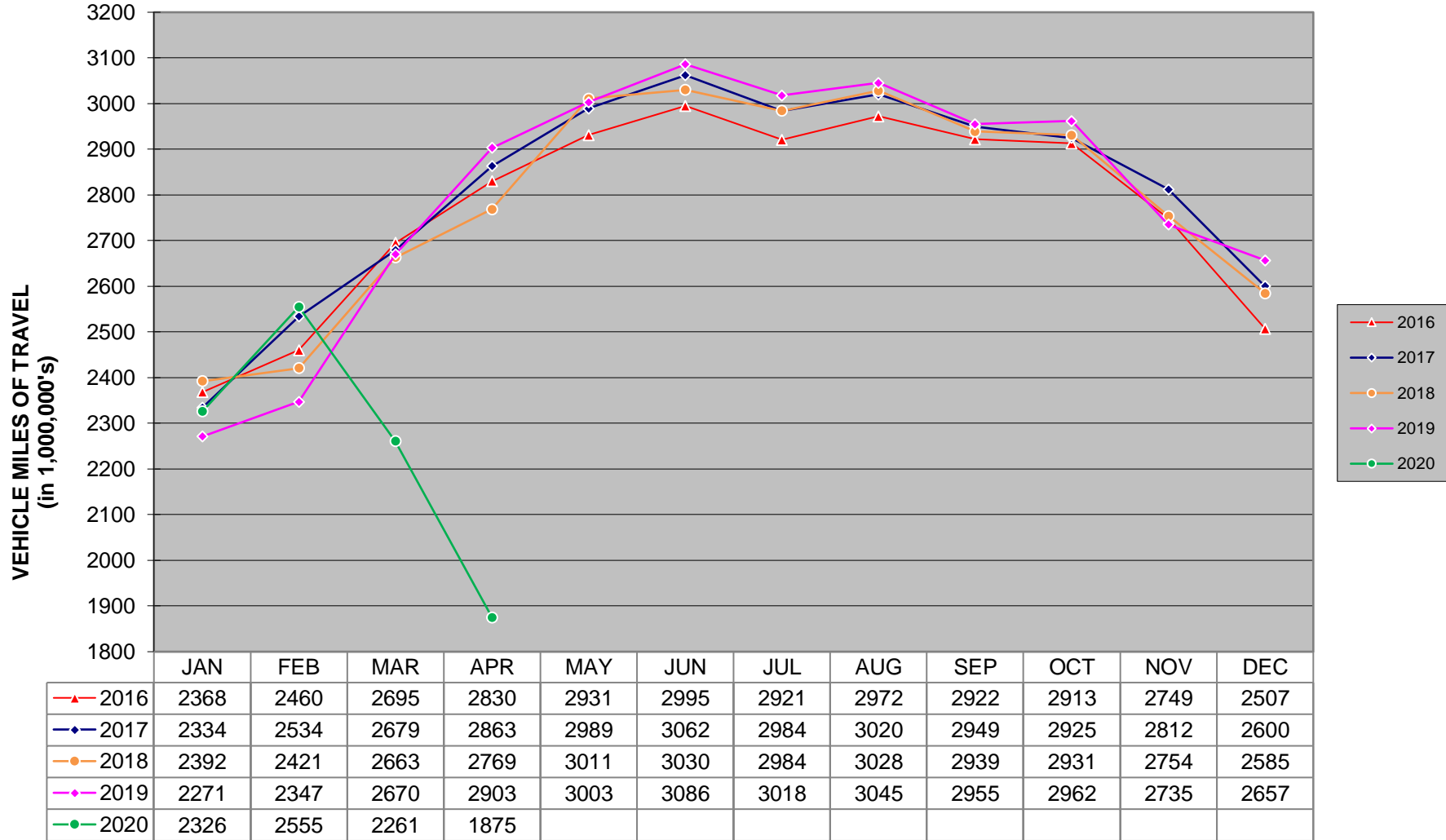
## MONTHLY US & IA ROUTE VMT \*



**There are 8,454 miles of US and IA routes in Iowa as of December 31, 2018 .**

\* The COVID-19 Pandemic may have impacts on Vehicle Miles Traveled not currently accounted for in this month's report methodology. Therefore these estimated monthly VMT numbers reported will be evaluated further once additional data (such as fuel usage, third-party origin and destination statistics) is gathered.

## MONTHLY TOTAL STATE VMT \* (Includes Interstate, US, IA, Secondary & Municipal Roads)



\* The COVID-19 Pandemic may have impacts on Vehicle Miles Traveled not currently accounted for in this month's report methodology. Therefore these estimated monthly VMT numbers reported will be evaluated further once additional data (such as fuel usage, third-party origin and destination statistics) is gathered.