

SUPER-2 CORRIDORS

Strategic Investments for Safer, More Efficient Highways

What is a Super-2?

A Super-2 is a two-lane highway with enhancements to increase safety and mobility without expanding the highway to four lanes.

These upgrades make Super-2 highways safer, more efficient, and more cost effective while preserving the corridor's rural character.



Key Features:

- **Regularly spaced passing lanes** in rural areas for safer passing.
- **Three-lane sections in urban areas.**
(Two through-lanes and a center left-turn lane)
- **Additional safety enhancements** such as wider paved shoulders, turn lanes, rumble strips, and access control.



Key Benefits



IMPROVED MOBILITY

Super-2 corridors will allow for efficient travel time and speeds based on projected 2050 traffic volumes.



IMPROVED SAFETY

Super-2 conversions on U.S. 169 and U.S. 63 in Iowa experienced significant crash reductions.



↓ **67%**

Crash Reduction

(excluding animal collisions)



↓ **29%**

Crash Reduction



ENVIRONMENTAL & PROPERTY BENEFITS

Super-2s cause less disruption to private property, farmland, and the environment compared to a four-lane expansion.

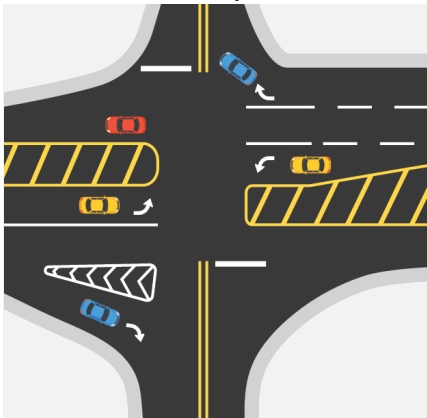


LOWER COSTS

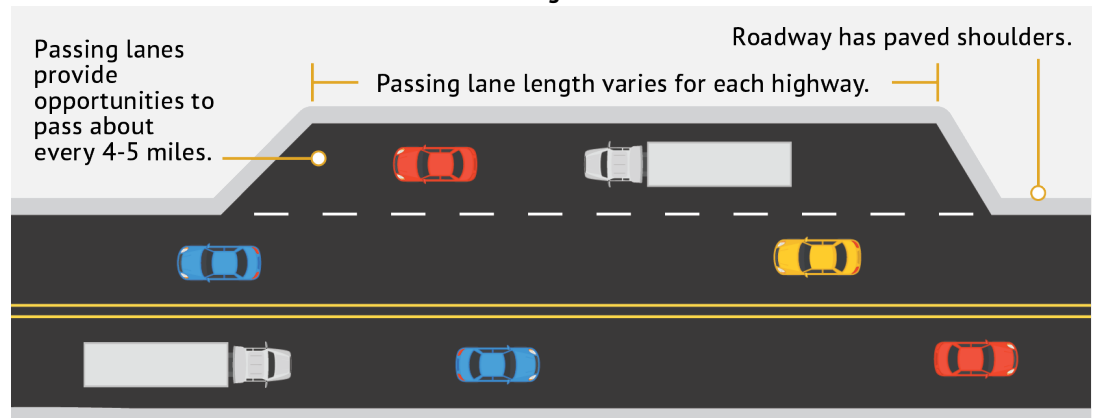
Building a Super-2 corridor costs less and requires a much smaller amount of right-of-way and farmland than it would take to expand to a 4-lane highway and bypass.



Intersection Improvements



Passing Lane



For illustration purposes only. Each highway will be evaluated for its specific needs and conditions. Turn lanes and offset to be based on safety and volume.

Economic Reality: What the Research Shows

A common belief is that highway expansion will lead to economic growth. However, research suggests the relationship is a little more complex:

- Many factors, including workforce education, market access, and local policies, drive economic development.
- Highway expansion does not guarantee new economic growth. The benefits often shift from one area to another, with no clear regional or statewide gain.
- Case studies of four-lane conversion corridors in Iowa did not find distinct economic gains in those areas.

While a safe, efficient highway system supports the economy, expanding to four lanes without a clear need is not a cost-effective strategy for economic growth.

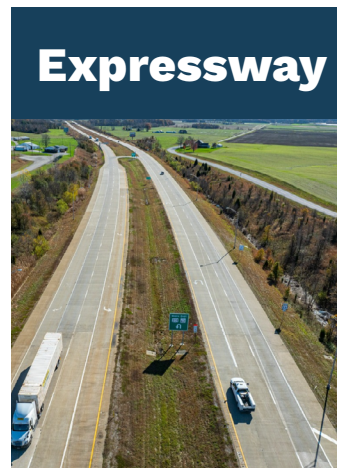
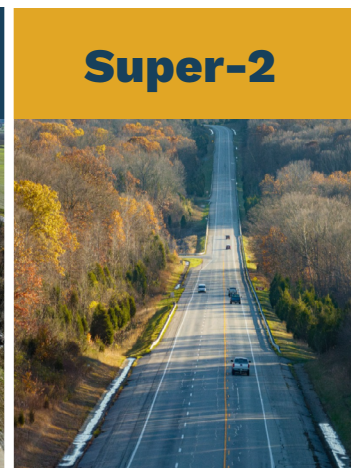


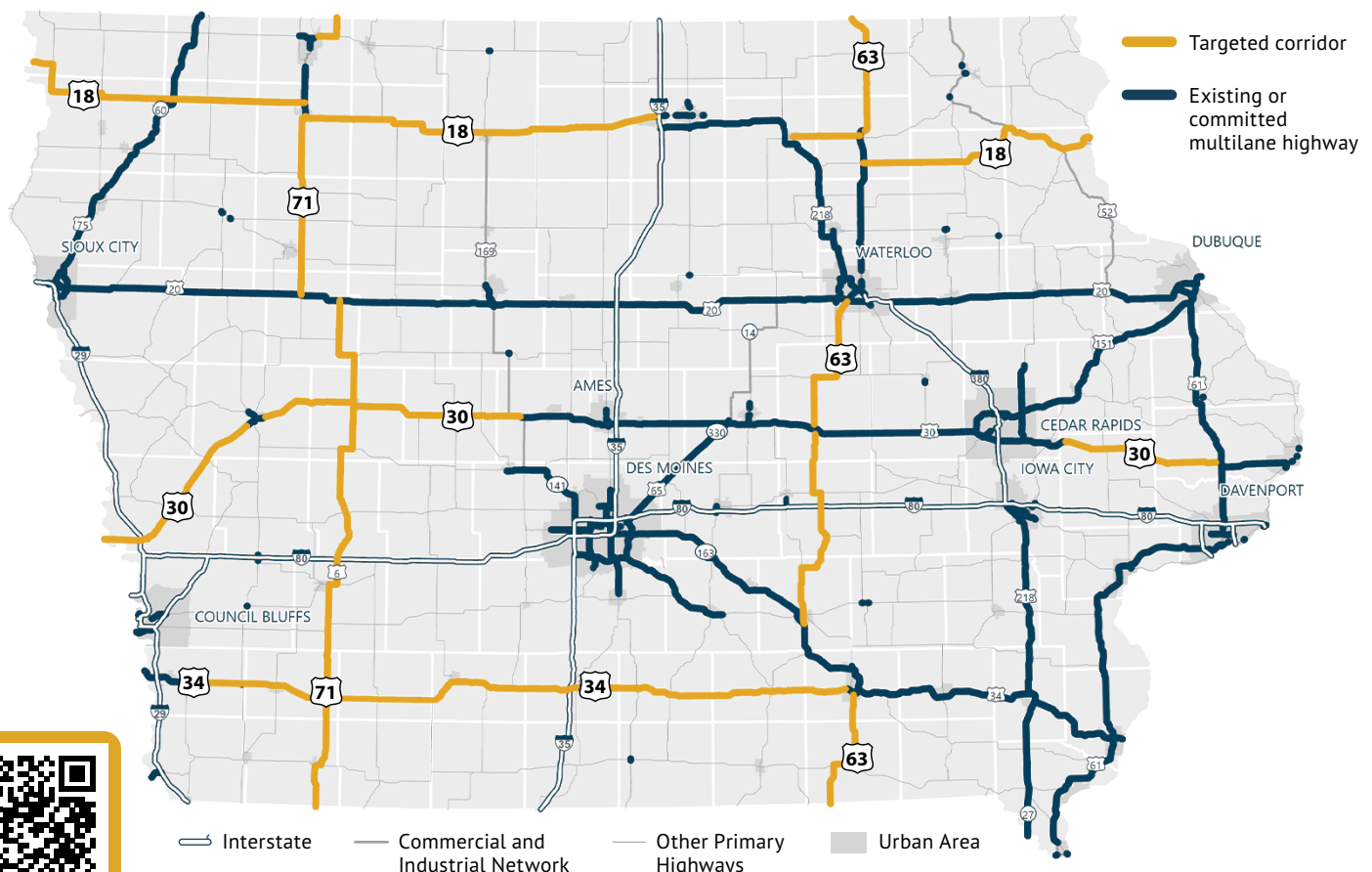
Image courtesy of Mid-States Corridor Tier 2



Looking Ahead

The Super-2 approach offers a smarter, sustainable, and fiscally responsible way to improve key corridors. These investments balance safety, mobility, and freight needs without unnecessary costs or overbuilding.

Targeted Corridors



SCAN ME

LEARN MORE ABOUT SUPER-2 HIGHWAYS IN THE STATE TRANSPORTATION PLAN
IOWADOT.GOV/IOWAINMOTION (Page 177)